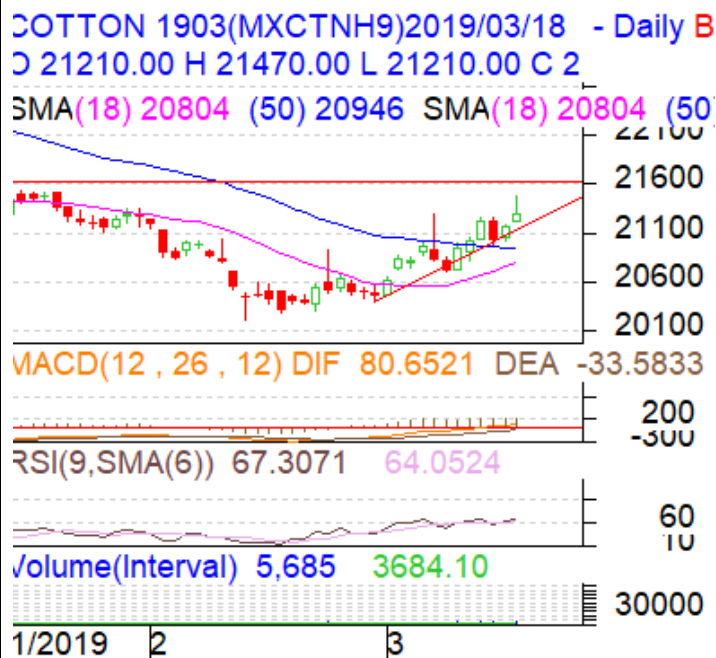


**Commodity: Cotton**  
**Contract: Mar**
**Exchange: MCX**  
**Expiry: Mar 29, 2019**
**Cotton**
**Technical Commentary:**

- Cotton 29 mm MCX Mar contract broke the important support of 20'450.
- Relative strength indicator (RSI) is in the oversold region on the daily chart which suggests that the prices could consolidate in the near term, but overall trend remain bearish.
- Candlestick pattern of daily chart shows bullish movement in the market on low selling pressures.
- Oscillator like RSI fell and indicates further fall in the market.
- We will advise traders to sell today.

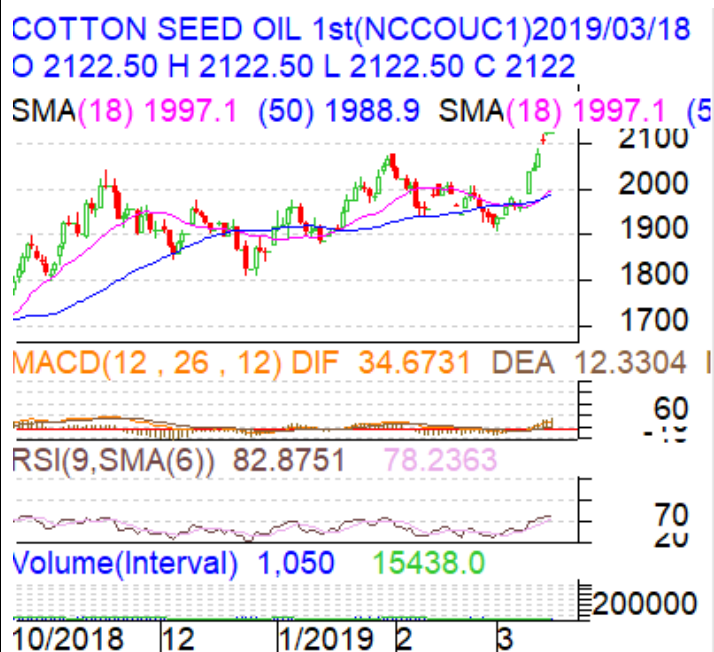

**Strategy: Sell**

Intraday Supports & Resistances			S2	S1	PCP	R1	R2
Cotton	MCX	Mar	21000	21100	21290	21600	21700
Intraday Trade Call			Call	Entry	T1	T2	SL
Cotton	MCX	Mar	<b>Sell</b>	21300	21280	21350	21288

\* Do not carry-forward the position next day.

**Commodity: Cotton Seed oil Cake**
**Exchange: NCDEX**
**Contract: Mar**
**Expiry: Mar 20, 2019**
**Cotton**
**Technical Commentary:**

- Candlestick pattern depicts the firm situation in the market.
- Prices closed above 9 and 18 days EMA
- Oscillator like RSI up and indicates further rise in the market.
- MACD is in positive territory
- We will advise traders to sell today.


**Strategy: Sell**

Intraday Supports & Resistances			S2	S1	PCP	R1	R2
Cotton oil cake	NCDEX	Mar	2000	2100	2122	2300	2400
Intraday Trade Call			Call	Entry	T1	T2	SL
Cotton oil cake	NCDEX	Mar	<b>Sell</b>	2125	2110	2140	2107

\* Do not carry-forward the position next day.

**Disclaimer**

The information and opinions contained in the document have been compiled from sources believed to be reliable. The company does not warrant its accuracy, completeness and correctness. Use of data and information contained in this report is at your own risk. This document is not, and should not be construed as, an offer to sell or solicitation to buy any commodities. This document may not be reproduced, distributed or published, in whole or in part, by any recipient hereof for any purpose without prior permission from the Company. IASL and its affiliates and/or their officers, directors and employees may have positions in any commodities mentioned in this document (or in any related investment) and may from time to time add to or dispose of any such commodities (or investment). Please see the detailed disclaimer at <http://www.agriwatch.com/Disclaimer.asp>  
 © 2019 Indian Agribusiness Systems Ltd.