

Commodity: Cotton

Exchange: MCX

Contract: Jul

Expiry: Jul 31, 2020



Technical Commentary:

- Cotton 29 mm MCX Jan contract faces resistance at 16350.
- Relative strength indicator (RSI) in the neutral region.
- The price closed below moving averages.
- Price decreased & open interested decreased indicating long liquidation.

We will advise traders to sell today.

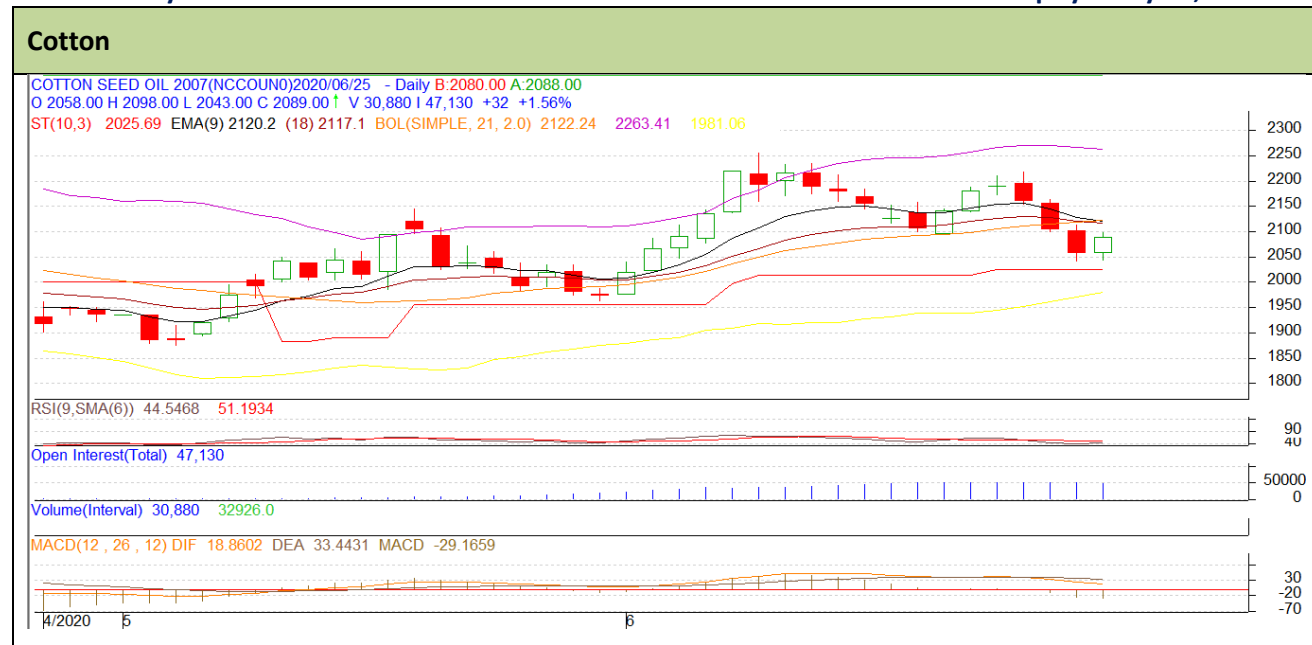
Strategy: Sell

| Intraday Supports & Resistances | | | S2 | S1 | PCP | R1 | R2 |
|---------------------------------|-----|-----|-------------|-------|-------|-------|-------|
| Cotton | MCX | Jul | 15510 | 15630 | 15910 | 16222 | 16360 |
| | | | Call | Entry | T1 | T2 | SL |
| Cotton | MCX | Jul | Sell | 16000 | 15880 | 15780 | 16072 |

* Do not carry-forward the position next day.

Commodity: Cotton Seed oil Cake
Contract: July

Exchange: NCDEX
Expiry: July 20, 2020



Technical Commentary:

- Overall Candlestick pattern depicts consolidation and the line of supertrend acted as a support.
- RSI is in the neutral region.
- Prices closed below 9 and 18 days EMAs002E
- Price increased while open interest decreased indicating short cover.

We will advise traders to wait today.

Strategy: Wait

| Intraday Supports & Resistances | | | S2 | S1 | PCP | R1 | R2 |
|---------------------------------|-------|-----|------|-------|------|------|------|
| Cotton oil cake | NCDEX | Jul | 1964 | 2024 | 2089 | 2160 | 2220 |
| Intraday Trade Call | | | Call | Entry | T1 | T2 | SL |
| Cotton oil cake | NCDEX | Jul | Wait | - | - | - | - |

* Do not carry-forward the position next day.

Disclaimer

The information and opinions contained in the document have been compiled from sources believed to be reliable. The company does not warrant its accuracy, completeness and correctness. Use of data and information contained in this report is at your own risk. This document is not, and should not be construed as, an offer to sell or solicitation to buy any commodities. This document may not be reproduced, distributed or published, in whole or in part, by any recipient hereof for any purpose without prior permission from the Company. IASL and its affiliates and/or their officers, directors and employees may have positions in any commodities mentioned in this document (or in any related investment) and may from time to time add to or dispose of any such commodities (or investment). Please see the detailed disclaimer at <http://www.agriwatch.com/Disclaimer.asp> © 2020 Indian Agribusiness Systems Ltd.