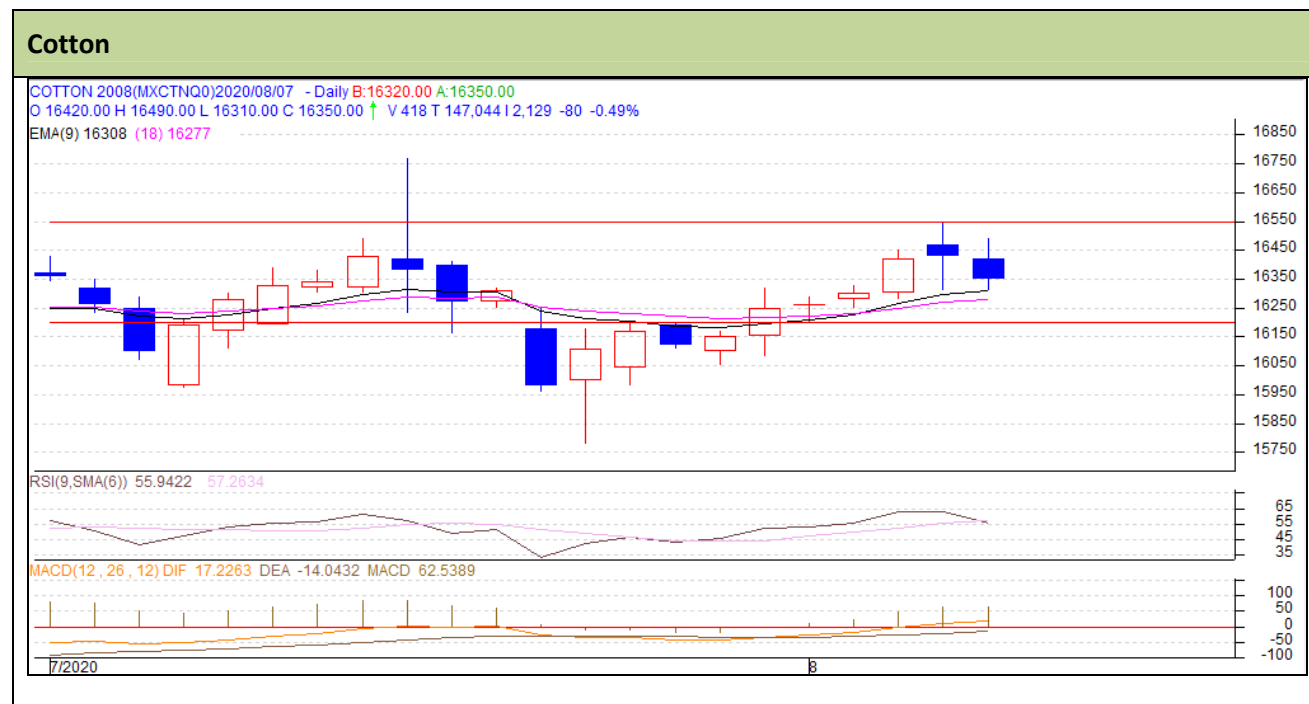


**Commodity: Cotton**
**Exchange: MCX**
**Contract: Aug**
**Expiry: Aug 31, 2020**

**Technical Commentary:**

- Cotton 29 mm MCX Jan contract is showing weak trend.
- Relative strength indicator (RSI) is in the neutral region.
- The price closed above moving averages.
- Both price & open interested decreased indicating long liquidation.

We will advise traders to sell today.

**Strategy: Sell on Rise**

Intraday Supports & Resistances			S2	S1	PCP	R1	R2
Cotton	MCX	Aug	15945	16025	16350	16575	16695
			Call	Entry	T1	T2	SL
Cotton	MCX	Aug	<b>Sell</b>	16355	16235	16135	16427

\* Do not carry-forward the position next day.

**Commodity: Cotton Seed oil Cake**  
**Contract: Aug**
**Exchange: NCDEX**  
**Expiry: Aug 20, 2020**

**Technical Commentary:**

- Overall Candlestick pattern shows weak trend.
- RSI is down in the neutral region.
- Prices closed below 9 and 18 days EMAs.
- Price and open interest decreased indicating short build up phase.

We will advise traders to sell today.

**Strategy: Sell on Rise**

Intraday Supports & Resistances			S2	S1	PCP	R1	R2
Cotton oil cake	NCDEX	Aug	1634	1684	1754	1875	1925
Intraday Trade Call			Call	Entry	T1	T2	SL
Cotton oil cake	NCDEX	Aug	<b>Sell</b>	1760	1725	1700	1781

\* Do not carry-forward the position next day.

**Disclaimer**

The information and opinions contained in the document have been compiled from sources believed to be reliable. The company does not warrant its accuracy, completeness and correctness. Use of data and information contained in this report is at your own risk. This document is not, and should not be construed as, an offer to sell or solicitation to buy any commodities. This document may not be reproduced, distributed or published, in whole or in part, by any recipient hereof for any purpose without prior permission from the Company. IASL and its affiliates and/or their officers, directors and employees may have positions in any commodities mentioned in this document (or in any related investment) and may from time to time add to or dispose of any such commodities (or investment). Please see the detailed disclaimer at <http://www.agriwatch.com/Disclaimer.asp> © 2020 Indian Agribusiness Systems Ltd.