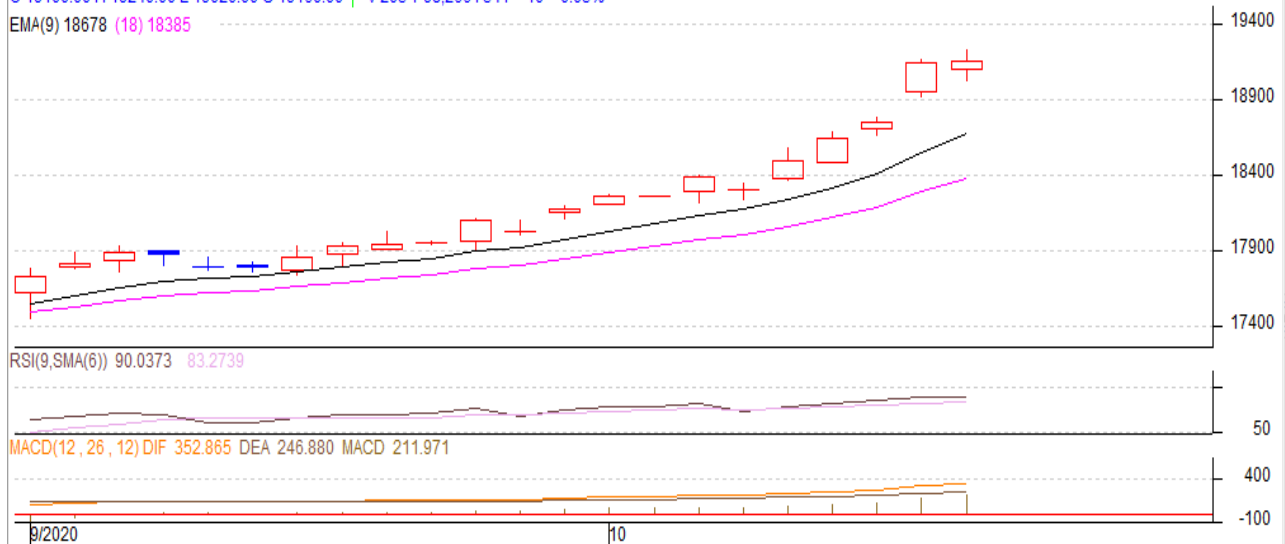


**Oct 14<sup>th</sup> 2020**
**Commodity: Cotton**
**Exchange: MCX**
**Contract: Oct.**
**Expiry: Oct. 31, 2020**
**Cotton**

COTTON 2011(MXCTNX0)2020/10/13 - Daily B:19120.00 A:19200.00  
 O 19100.00 H 19240.00 L 19020.00 C 19160.00 ↑ V 205 T 98,266 I 541 +10 +0.05%  
 EMA(9) 18678 (18) 18385


**Technical Commentary:**

- Cotton 29 mm MCX Oct. contract is rising at last trading hours of the day.
- Relative strength indicator (RSI) is up in the overbought region.
- The price closed above moving averages.
- Both price & open interest increased indicating long build up phase.

We will advise traders to buy today.

**Strategy: Buy On Dips**

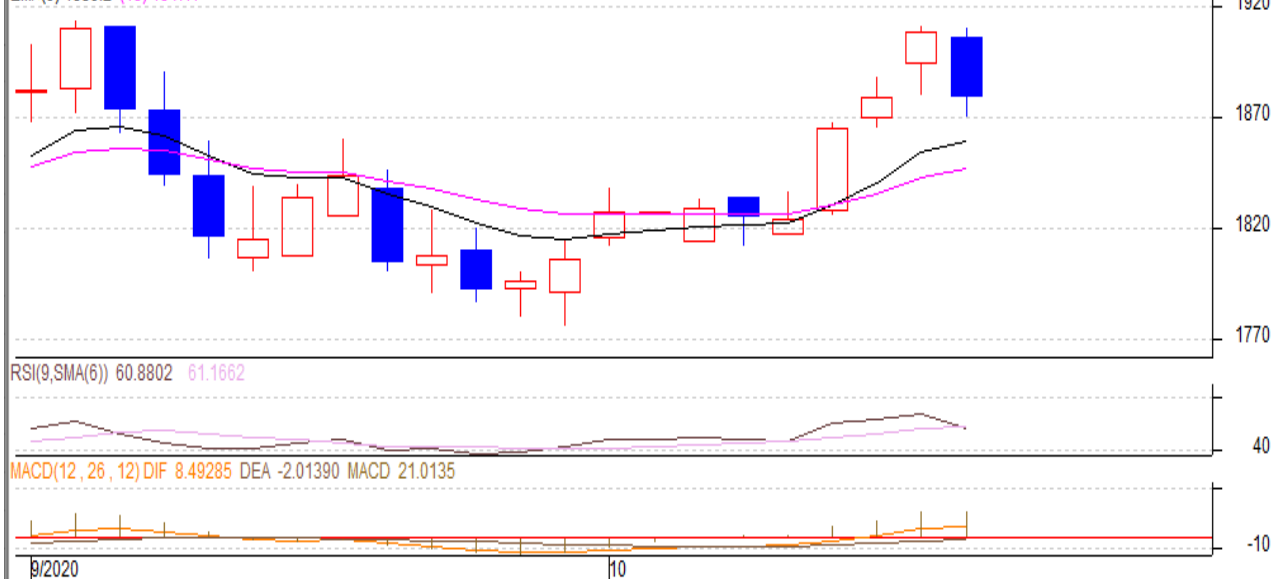
Intraday Supports & Resistances			S2	S1	PCP	R1	R2
Cotton	MCX	Oct	18740	18820	19160	19370	19490
			Call	Entry	T1	T2	SL
Cotton	MCX	Oct	Buy	19150	19250	19340	19080

\* Do not carry-forward the position next day.

**Oct 14<sup>th</sup> 2020**
**Commodity: Cotton Seed oil Cake**
**Exchange: NCDEX**
**Contract: Dec**
**Expiry: Dec 19, 2020**
**Cotton**

COTTON SEED OIL 2012(NCCOUZ0)2020/10/13 - Daily B:1876.00 A:1877.00  
O 1906.00 H 1910.00 L 1870.00 C 1879.00 ↑ V 23,500 I 24,400 -30 -1.57%

EMA(9) 1859.2 (18) 1847.1


**Technical Commentary:**

- Overall Candlestick pattern shows weak trend.
- RSI is down in the neutral region.
- Prices closed near 9 and 18 days EMAs.
- Price and open interest are downside indicating short build up phase in the market.

We will advise traders to sell today.

**Strategy: Sell on Rise**

Intraday Supports & Resistances			S2	S1	PCP	R1	R2
Cotton oil cake	NCDEX	Dec	1759	1809	1879	2000	2050
Intraday Trade Call			Call	Entry	T1	T2	SL
Cotton oil cake	NCDEX	Dec	<b>Sell</b>	1885	1850	1825	1906

\* Do not carry-forward the position next day.

**Disclaimer**

The information and opinions contained in the document have been compiled from sources believed to be reliable. The company does not warrant its accuracy, completeness and correctness. Use of data and information contained in this report is at your own risk. This document is not, and should not be construed as, an offer to sell or solicitation to buy any commodities. This document may not be reproduced, distributed or published, in whole or in part, by any recipient hereof for any purpose without prior permission from the Company. IASL and its affiliates and/or their officers, directors and employees may have positions in any commodities mentioned in this document (or in any related investment) and may from time to time add to or dispose of any such commodities (or investment). Please see the detailed disclaimer at <http://www.agriwatch.com/Disclaimer.asp> © 2020 Indian Agribusiness Systems Ltd.