

COTTON WEEKLY RESEARCH REPORT
18 March 2019
Domestic market summary

Domestic market Scenario: Indian Domestic prices traded firm during this week, mainly due to lower daily arrivals and good demand for Indian cotton from China. The price in Indian market is higher than that internationally. This is backed by higher MSP and purchases by CCI. The market may move up only through larger offtake by exporters or by domestic industry. Average price of Lint at Sirsa during the week was Rs.4375 per maund (of 37.32 Kg each), slightly stronger from the previous week price of Rs 4325. Cotton fiber (Shankar-6) prices noticed slightly up trend this week. Average price was Rs 42566 per candy (of 355.6 kg each) during the week, which was Rs 41983 per candy previous week.

Weekly Price Outlook : In the coming week we expect Kapas price to remain to be firm with the price band of Rs 5600-5900 per quintal in the Rajkot market. Lint price at Sirsa is likely to be in range of Rs 4200-5000 per maund.

Major Market Highlights:

- Cotton prices continued to trade firm taking cues from international market and good demand witnessed from china and also arrivals has been decreasing w-o-w.
- Indian Rupee remained stable between 69.08 to 70.15 during this week.
- Gujarat 29 mm Cotton sold between 42,000 to 43,000 Rs./Candy.
- All India Daily Arrivals remained between 1,10,000 to 1,25,000 bales.
- During this week NY future gained 201 points W/W.
- CCI is going to commence the sale of 1.1 million bales cotton procured in the 2018-2019 (October-September) and it expects another 4-5 lakh bales would be procured in the coming weeks. Cotton procured sale may probably start from first week of the April. The government had raised the support price for cotton by 26% this year. Prices have improved 2-4% from the recent lows and currently hovering around 20,800 rupees per bale. Prices may rise even more as China started buying Indian cotton from last month.
- The Punjab state agriculture department has started preparing for upcoming cotton sowing season that normally starts by April end and continues throughout May. The state department this year has fixed the target of cotton sowing in 3.20 lakh hectares as compared 2.83 lakh hectares of last year.
- CAI had estimated exports for the 2018-19 season to decline by 27 per cent to 50 lakh bales, compared with the estimated exports of 69 lakh bales during last year. India's total cotton exports shipment is around 32 lakh bales up to February 2019. If this rate continues for another 45 days, we will achieve our export target of 50-53 lakh bales

Cotton Balance Sheet (India):

| In Lakh Bales(170 KGS) | 2014-15 | 2015-16 | 2016-17 | 2017-18 | 2018-19* | Oct-Dec | Jan-Mar | Apr-June | July-Sept |
|------------------------|---------------|---------------|---------------|---------------|---------------|---------------|---------------|---------------|--------------|
| Supply | | | | | | | | | |
| Opening stock | 33 | 66.23 | 36.67 | 48.04 | 24.04 | 24.04 | 57.54 | 58.54 | 36.07 |
| Cotton production | 386 | 332 | 345 | 365 | 336.53 | 153.50 | 138.50 | 37.53 | 7.00 |
| Imports | 14.39 | 22.79 | 30.94 | 15 | 27 | 6.00 | 10.00 | 6.00 | 5.00 |
| Total supply | 433.39 | 421.02 | 412.61 | 428.04 | 387.56 | 183.54 | 206.04 | 102.07 | 48.07 |
| Demand | | | | | | | | | |
| Mill consumption | 278.06 | 270.2 | 262.66 | 288 | 267 | 95.00 | 110.00 | 45.00 | 17.00 |
| Consumption by SSI | 26.38 | 27.08 | 26.2 | 27 | 27.5 | 6.00 | 10.50 | 8.00 | 3.00 |
| Non Mill consumption | 5 | 18 | 17.5 | 19 | 19.5 | 5.00 | 5.00 | 5.00 | 4.50 |
| Exports | 57.72 | 69.07 | 58.21 | 70 | 53 | 20.00 | 22.00 | 8.00 | 3.00 |
| Total Demand | 367.16 | 384.35 | 364.57 | 404 | 367 | 126.00 | 147.50 | 66.00 | 27.50 |
| Ending Stock | 66.23 | 36.67 | 48.04 | 24.04 | 20.57 | 57.54 | 58.54 | 36.07 | 20.57 |
| Stock to use Ratio | 0.153 | 0.087 | 0.116 | 0.056 | 0.053 | 0.314 | 0.284 | 0.353 | 0.428 |

All figures in Lakh Bales (of 170 Kgs. Each) Source: CAI& Agriwatch *: estimated

As per the latest estimates by Agriwatch, cotton output in country during the season 2018-19 would be around 336.53 lakh bales (of 170 kg each) which is lower compared to production of 365 lakh bales of last season.

Following lower production, imports will rise marginally to 27 lakh bales compared to 15 lakh bales in previous season.

Due to lower opening stock imports, and lower production of cotton availability would be standing lower this season at 387.56 lakh bales compared to 428.04 lakh bales during the previous season.

Total domestic consumption (Including mill, small mill and non-mill consumption) would be around 367 lakh bales compared to 404 lakh bales during the previous season.

Cotton exports are expected to remain lower as that of previous year. It is expected that country would export around 53 lakh bales of cotton in the season 2018-19.

Ending stocks are expected to be around 20.57 lakh bales, it is lower compared to the ending stocks of previous season.

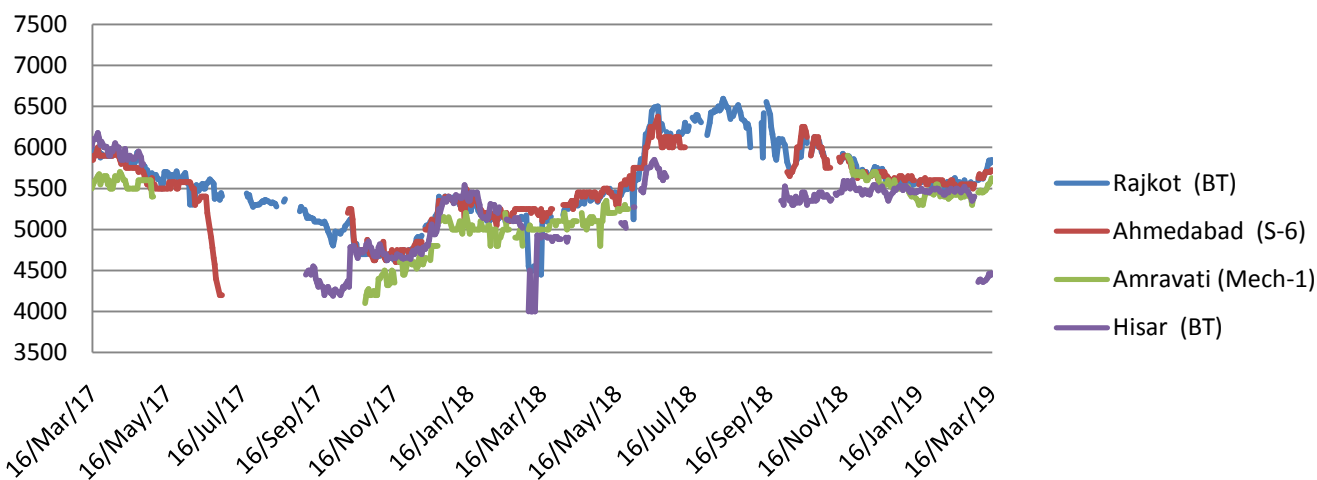
Domestic Cotton Prices Scenario

Kapas (Raw Cotton) Weekly Price Scenario

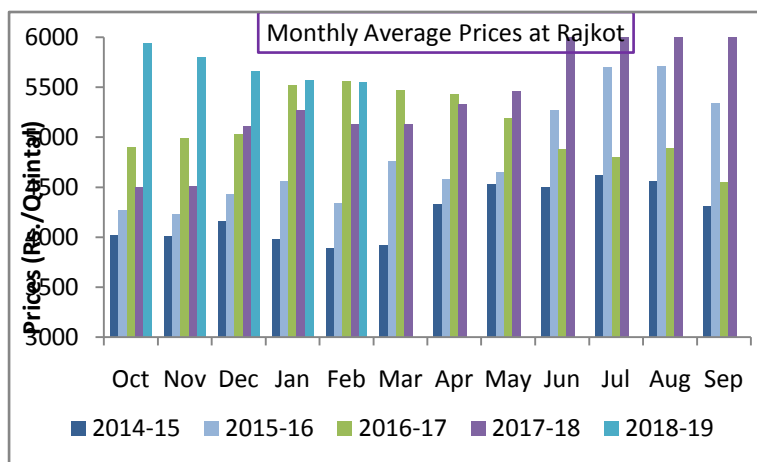
Weekly Price Review: Weekly kapas average price at Rajkot rose is Rs 5716/quintal this week.

Weekly Price Outlook: Kapas prices are expected to remain firm in coming days. The expected range for Kapas at Rajkot is Rs 5600-5900 per quintal for the coming week.

Variety wise Kapas Price trend (Rs/Qtl)



Kapas Monthly M-o-M Price Scenario



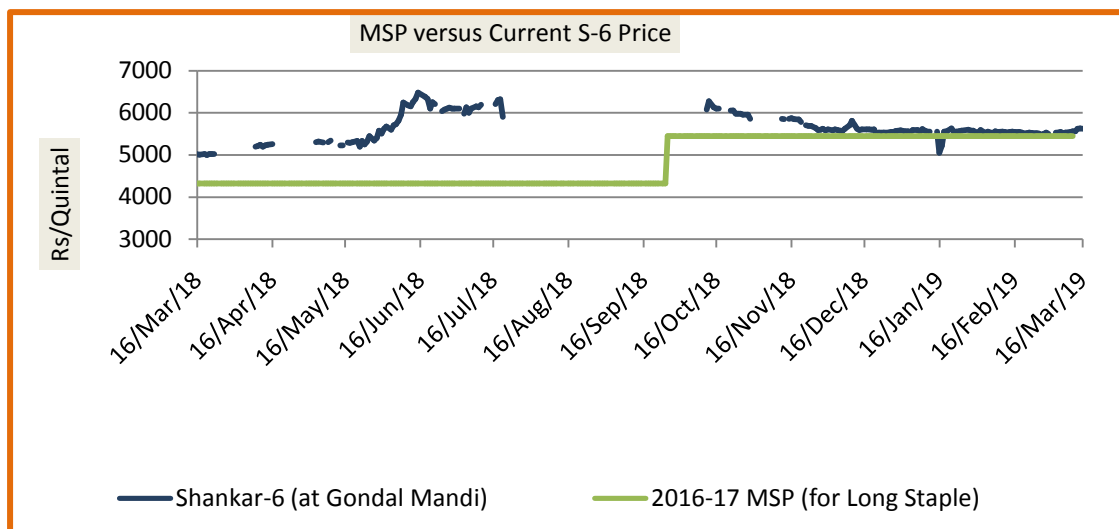
Kapas(seed cotton) prices in country noticed slightly weak during the Febmonth when compared to the previous month, and the same is ruling higher compared to the prices during the corresponding month of the previous season.

Monthly average price of Kapas at Rajkot remained Rs. 5551 per quintal during Jan, which was Rs.5568 during previous month and Rs.5128 per quintal during the corresponding month last year. We expect Kapas prices to

remain to Range-bound in the coming month. The expected price range for Sep month is likely to be Rs 5400-5800 per quintal.

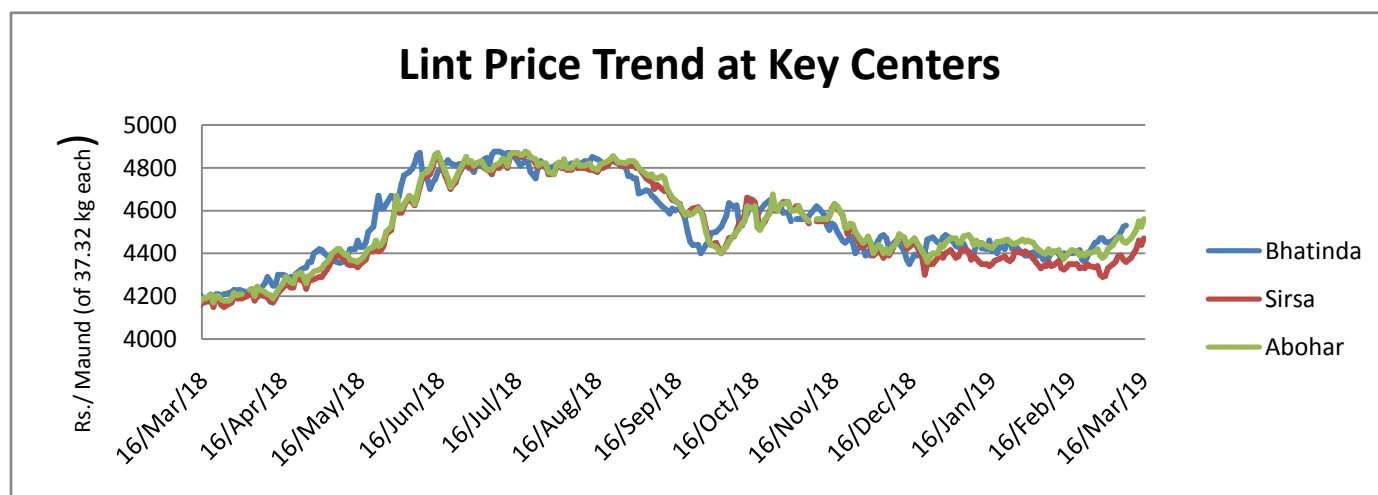
Spot Price versus MSP

The Kapas prices are ruling above the MSP so far. The gap between the two prices has increased this week of Mar. The average gap between the prices was Rs 95 compared to Rs 83 a week earlier, this means prices are increasing.



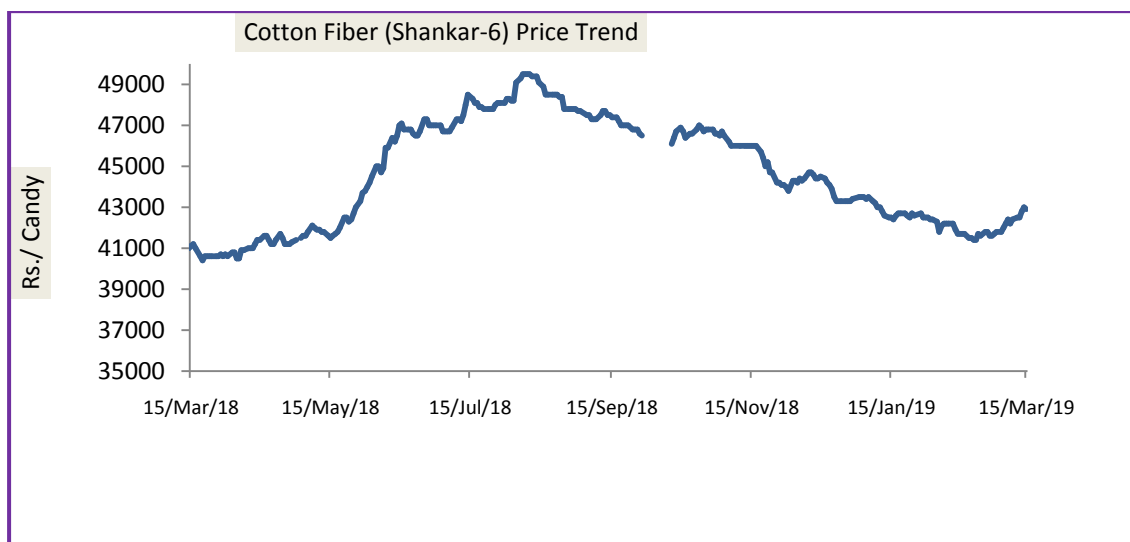
Lint price Outlook

Lint prices remained firm during the week owing to the tone prevailing in the market. Weekly average price of Lint at Sirsa remained Rs 4398 per maund of 37.32 kg each, as compared to the previous week price of Rs 4351 per maund.



Cotton Fiber price Outlook

Cotton fiber noticed an up trend in this week compared to the previous week. Average price was Rs 42566 per candy (of 355.6 kg each) during the week, which was Rs 41986 per candy previous week, and around Rs 41083 per candy during the corresponding week previous season. We expect cotton fiber to remain in the range of Rs 40000 -43000 per candy in the coming week.

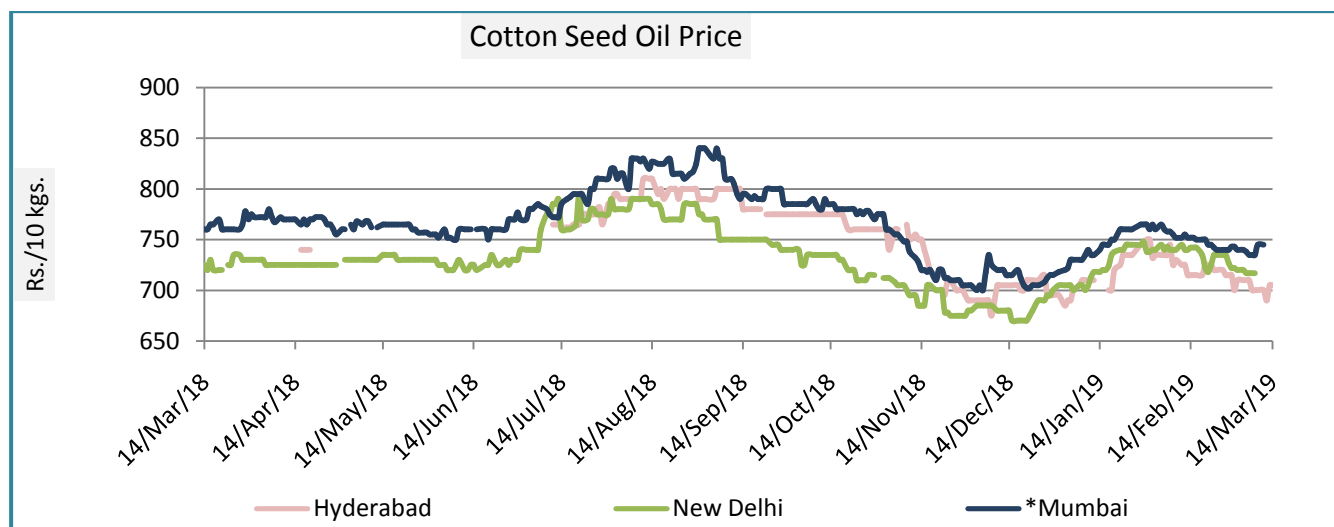


Cotton Seed Oil and Cotton Seed Oil Cake

Cotton Seed Oil weeklyPrice Scenario

Cotton seed oil price noticed weak during the week. Weekly average price in New Delhi is Rs 720 per 10 Kg, to the weekly average price of Rs 733 per 10 Kg in previous week.

| | Weekly Average Price as on (Rs/10 kg.) | | % Change |
|-----------|--|----------|----------|
| | 14-Mar-19 | 7-Mar-19 | |
| New Delhi | 720.7 | 733 | -1.68 |
| Rajkot | 726.4 | 728 | -0.22 |
| Hyderabad | 700 | 708 | -1.13 |
| Mumbai* | 738 | 741 | -0.40 |

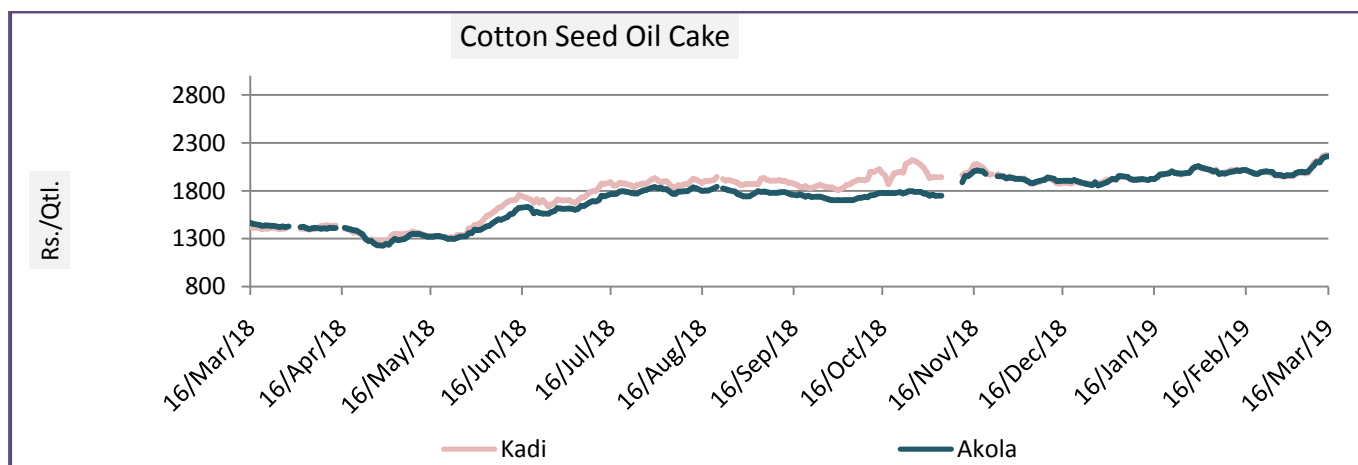


Cotton Seed Oil Cake weeklyPrice Scenario

Cotton seedoil cake price noticed firm during the week. Weekly average price in Akola remained Rs 2054.4 per quintal, lower compared to the weekly average price of Rs 1975 per quintal in the previous week.

| Centers | Weekly Average Price as on (Rs/quintal.)* | | % Change |
|---------|---|----------|----------|
| | 14-Mar-19 | 7-Mar-19 | |
| Kadi | 2060.5 | 1966 | 4.81 |
| Akola | 2054.4 | 1975 | 4.02 |

*Source: NCDEX



International Market Scenario

International cotton prices slightly traded firm during the week. Cotlook A index weekly average stood 82.40 cents/pound this week, which was 81.76 at cents/pound during last week.

Major Market Highlights:

US export sales were beyond requires pace but shipment was disappointing. There was at least one very positive piece of information on the report. China was the week's largest buyer with 49300 bales of net new orders. China's reappearance bodes well for sales and certainly caught traders' attention.

Net UPLAND sales of 1,66,00 RB for 2018-2019 were reported for China (49,300 RB, including decreases of 11,000 RB), Turkey (35,400 RB), Indonesia (20,800 RB), Vietnam (14,000 RB, including 2,600 RB switched from South Korea and decreases of 8,800 RB), and Bangladesh(11,000 RB).

For 2019-2020, net UPLAND sales of 23,100 RB were primarily for China (19,000 RB) and Thailand (2,600 RB).

UPLANDExports of 2,87,000 RB were primarily to Vietnam (78,700 RB), Pakistan (52,700 RB), China (23,900 RB), Turkey (22,800 RB), and Mexico (21,100 RB)

Net sales of PIMA totaling 29,300 RB for 2018-2019 were primarily for China (13,400 RB), Turkey (5,000 RB), Vietnam (4,400 RB), Peru (2,600 RB), and India (2,100 RB). For 2019-2020, total net sales of 1,600 RB were reported for India.

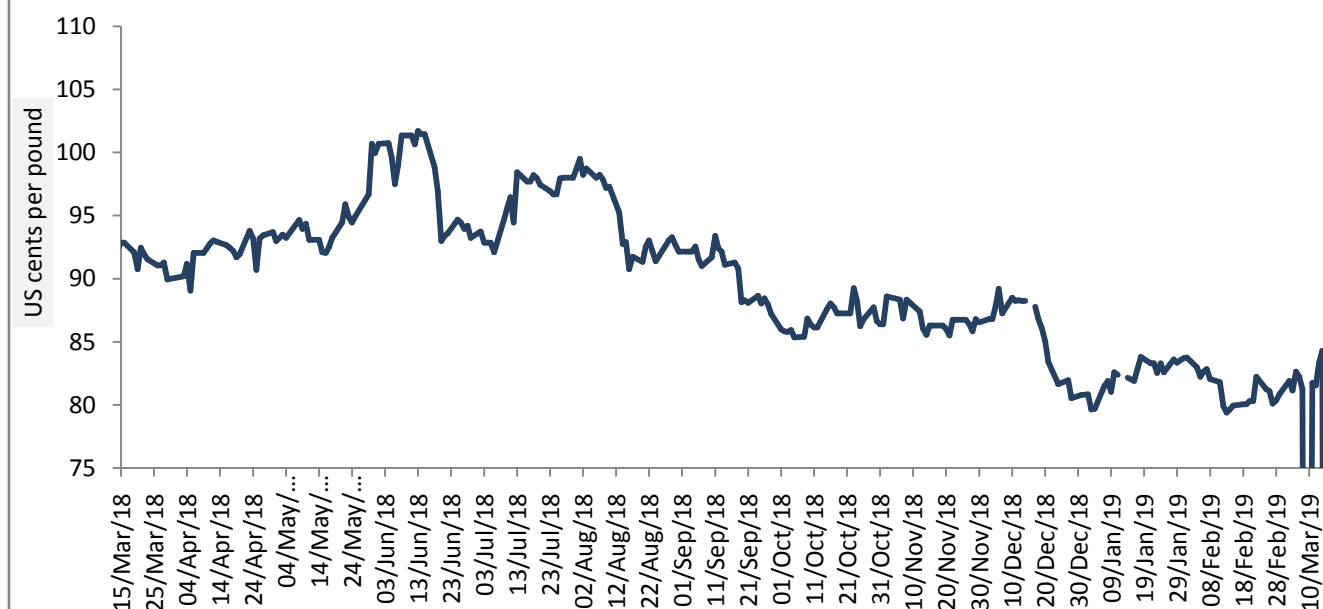
PIMAExports of 13,000 RB were primarily to India (5,700 RB), Vietnam (3,600 RB), Peru (1,700 RB), and Pakistan (1,400 RB).

Cotlook A Index

Cotlook A index noticed slightly firm during the week. The Cotlook A Index was up 95 points on March 14 to 84.30 cents/lb. The USDA Adjusted World Price (AWP) was updated to 64.10 cents/ lb on Thursday, up 68 points from the week prior.

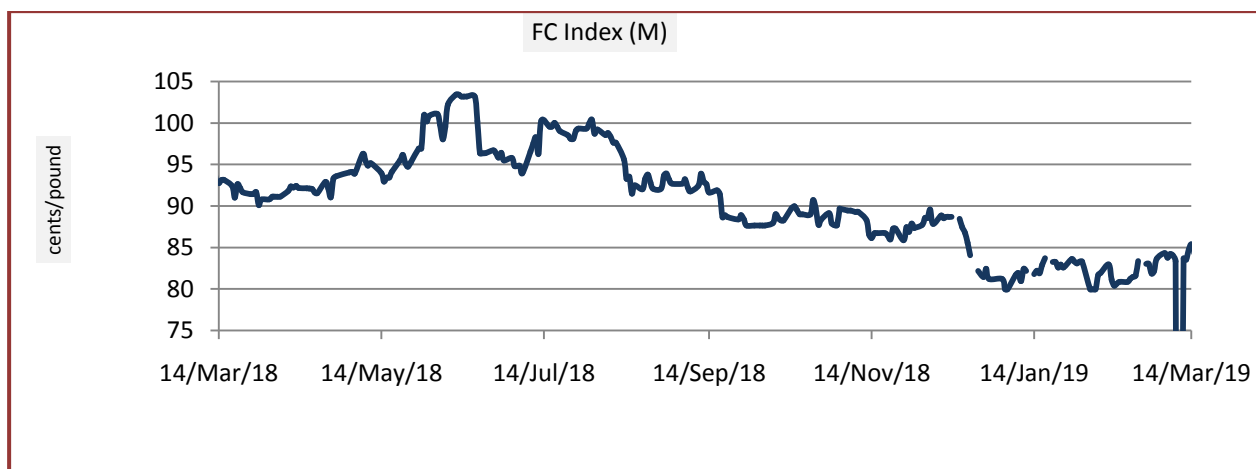
| Cotlook A Index | WeeklyAverage Price as on | | % Change |
|------------------------------|---------------------------|-----------|----------|
| | 14-Mar-19 | 07-Mar-19 | |
| Prices | 82.40 | 81.76 | 0.79 |
| Prices in US cents per Pound | | | |

Cotlook A Index



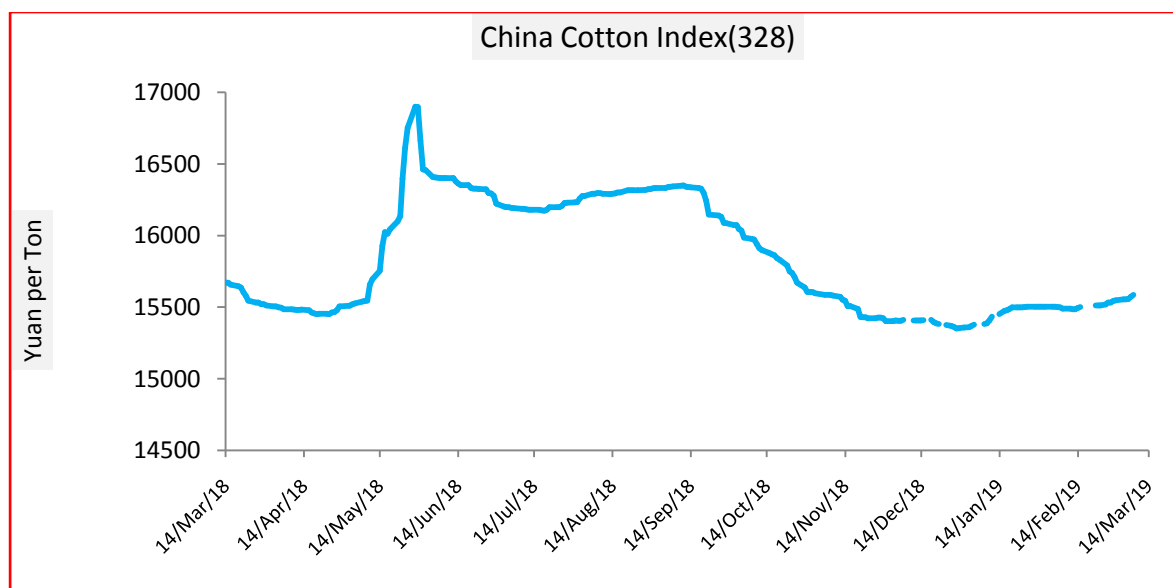
China Cotton Index and Foreign Cotton Index

| Cotton Index | Monthly Average Price as on | | % Change |
|------------------------------|-----------------------------|-----------|----------|
| | 14-Mar-19 | 07-Mar-19 | |
| FC (S) | 87.77 | 87.55 | 0.25 |
| FC (M) | 84.12 | 84 | 0.14 |
| FC (L) | 81.62 | 81.54 | 0.10 |
| Prices in US cents per Pound | | | |



China Index slightly firmd uring the Week. CC Index (328) remained 15555 Yuan per ton during the week.Average was 15527 Yuan per ton during previous week.

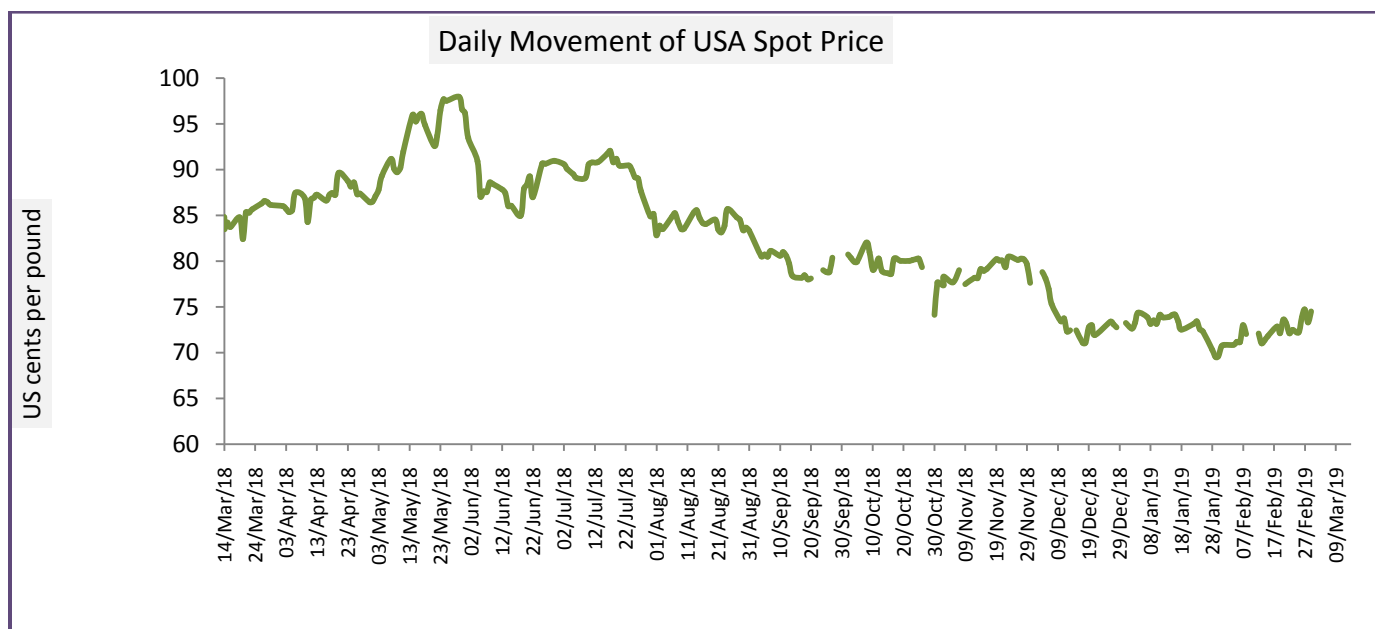
| Cotton Index | Monthly Average Price as on | | % Change |
|------------------------|-----------------------------|-----------|----------|
| | 14-Mar-19 | 07-Mar-19 | |
| CCIndex(328) | 15555 | 15527 | 0.18 |
| CCIndex(527) | 14572.83 | 14552 | 0.14 |
| CCIndex(229) | 16013 | 15994 | 0.12 |
| Prices in Yuan per ton | | | |



USA Spot Prices

Cotton was sharply high during last week last week as weak overall demand continues to impact the US market. On the other hand, world production and supplies are going lower due to bad weather in the growing season for major producers around the world, including India, Pakistan, and Australia. China had problems with its growing weather, too. Demand for US Cotton has been disappointing, as the weekly export sales reports have shown average demand at best since the start of the marketing year. China has not bought any US Cotton this year and has been active in other markets, especially India. US prices are down and China might start to look at the US crop, but there have been worries about the quality of the US crop due to some extreme growing conditions in Texas and the Southeast over the Summer and Fall. Ideas are that the quality worries have kept some importers of US Cotton away from the market.

| USA Spot Prices | Monthly Average Price as on | | % Change |
|------------------------------|-----------------------------|-----------|----------|
| | 14-Mar-19 | 07-Mar-19 | |
| Prices | 73.11 | 72.78 | 0.46 |
| Prices in US cents per Pound | | | |



Pakistan Spot Prices

Pakistan scrapped duties on import of cotton for February 1-June 30 to tide over shortage of the crop. In the current year, Pakistan has harvested 10.8 mln bales of cotton, down 25 per cent from initial target of 14.4 million bales. The Pakistan is likely to import 3.5-4 million bales - costing up to \$1.2 billion - as the crop size for season 2018-19 is

estimated at 10.8m bales, against the annual demand of around 15m bales. India's cotton exports to Pakistan are unlikely to see a sharp jump, despite the neighboring country scraping import duty, as high domestic prices have made exports uncompetitive. Indian cotton is currently available around 43,000 rupees a candy, while prices in Pakistan are trading at 43,500 rupees per candy.

| Karachi Spot Prices | Monthly Average Price as on | | % Change |
|---------------------------|-----------------------------|-----------|----------|
| | 14-Mar-19 | 07-Mar-19 | |
| Prices | 8776.6 | 8760 | 0.19 |
| Prices in Rs per 37.32 Kg | | | |

Weekly Technical Outlook:

Commodity: Cotton

Contract: Mar

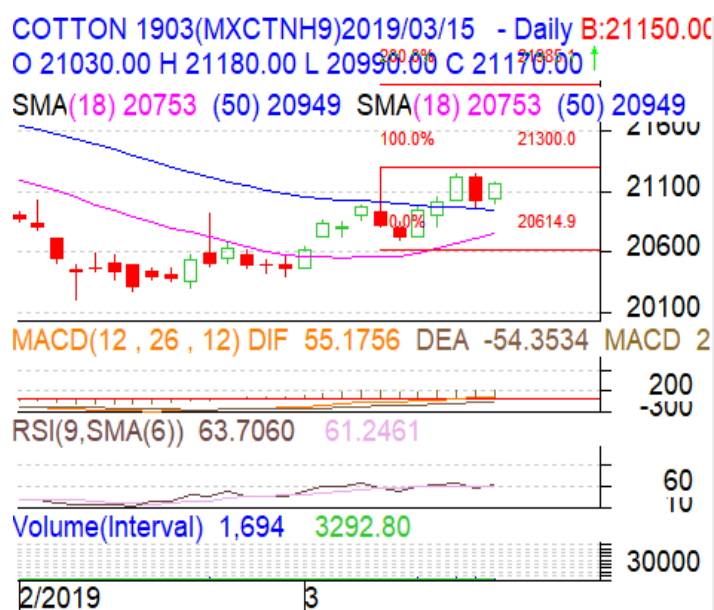
Exchange: MCX

Expiry: Mar 29, 2019

Cotton

Technical Commentary:

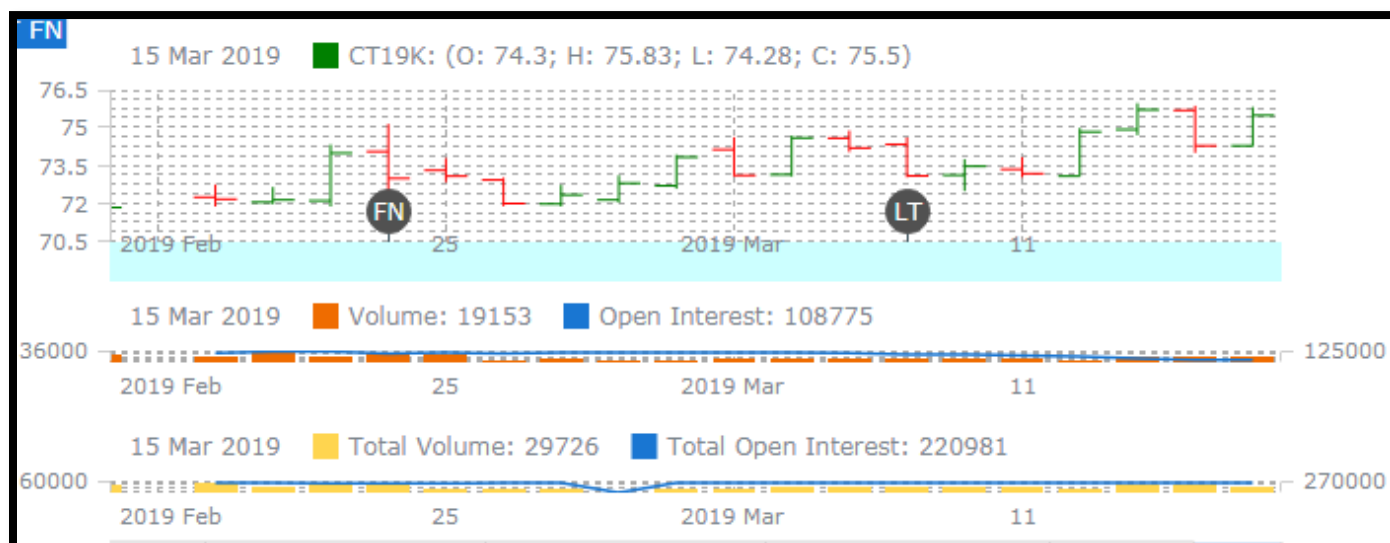
- Cotton 29 mm MCX Mar contract broke the important support of 20'450.
- Relative strength indicator (RSI) is in the oversold region on the daily chart which suggests that the prices could consolidate in the near term, but overall trend remain bearish.
- Candlestick pattern of daily chart shows bullish movement in the market on low selling pressures.
- Oscillator like RSI fell and indicates further fall in the market.
- We will advise traders to sell today.



Strategy: Sell

| Intraday Supports & Resistances | | | S2 | S1 | PCP | R1 | R2 |
|---------------------------------|-----|-----|-------|-------|-------|-------|-------|
| Cotton | MCX | Mar | 20900 | 21000 | 21170 | 21600 | 21700 |
| Intraday Trade Call | | | Call | Entry | T1 | T2 | SL |
| Cotton | MCX | Mar | Sell | 21180 | 21170 | 21200 | 21186 |

Technical Analysis of Cotton Future ('Mar19 Contract) at ICE



- Candlesticks denotes bullish movement in the market.
- Volume increased while Open Interest decreased.
- We expect cotton prices to remain sideways to firm in the coming month.

Expected Price Range During Coming month

| Expected Trend | Expected Trading Band |
|---------------------------------|-----------------------|
| Range bound to Bearish Momentum | 73-77 |

Expected Support and Resistance

| Support 1 | Support 2 | Resistance 1 | Resistance 2 |
|-----------|-----------|--------------|--------------|
| 72 | 70 | 100 | 95 |

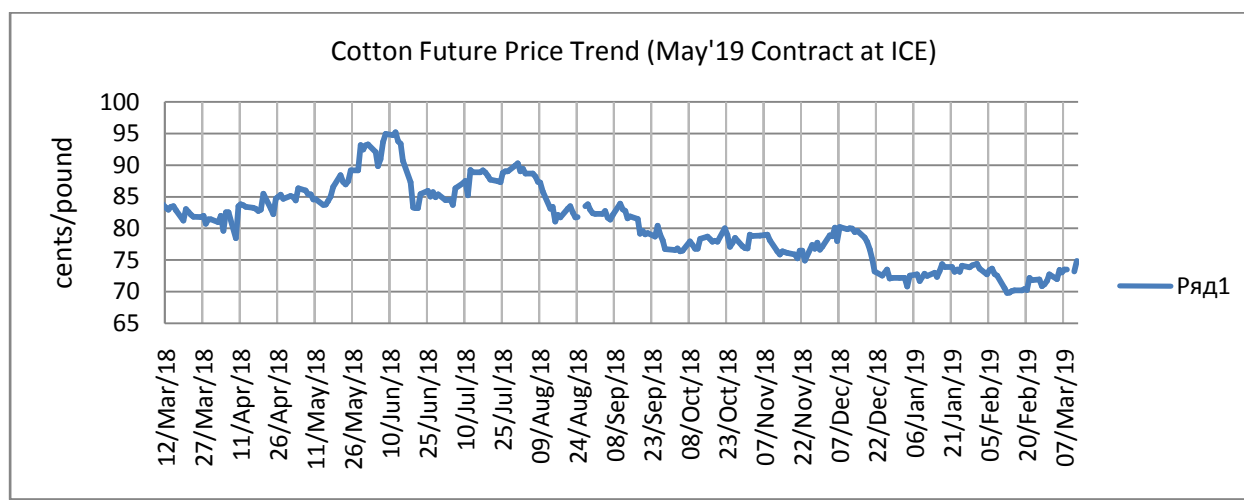
Figures in US cents/pound

Cotton Future Prices at ICE

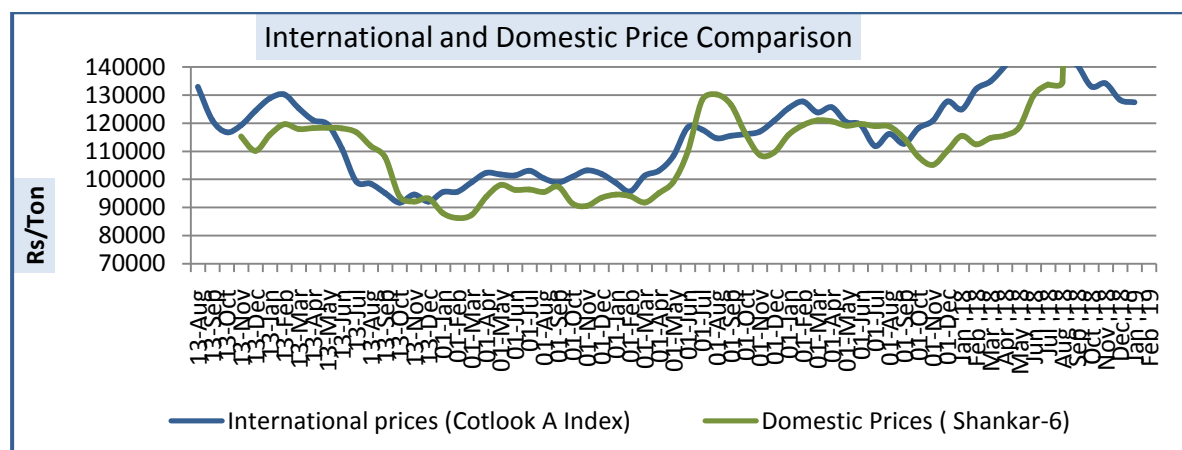
Future Price Trend (Active Contract):

| Cotton Prices in Future Contract on ICE | | | | | | Prices in cents/Lb | |
|---|---------------------------|---------------------------|---------------------------|---------------------------|------------------------|-----------------------|-----------------------------|
| Contracts | 12_Mar_2019 (1 month ago) | 12_Feb_2019 (1 month ago) | 12_Dec_2018 (3 month ago) | 12_Oct_2018 (6 month ago) | 12_Mar_2018 (Year Ago) | % Change over a month | % Change over previous year |
| 01-May-19 | 74.85 | 71.11 | 81.01 | 80.41 | 83.28 | 5.26 | -10.12 |

| | | | | | | | |
|-----------|-------|-------|-------|-------|-------|------|-------|
| 01-Jul-19 | 76.04 | 72.44 | 81.55 | 80.99 | 83.21 | 4.97 | -8.62 |
| 01-Oct-19 | 74.92 | 72.60 | 78.55 | 78.58 | 79.88 | 3.20 | -6.21 |
| 01-Dec-20 | 74.28 | 72.37 | 77.73 | 78.37 | 78.72 | 2.64 | -5.64 |
| 01-Mar-20 | 75.12 | 73.52 | 78.41 | | | 2.18 | |



International and Domestic Price Comparision



Cotton Prices at Key Spot Markets:

| Commodity | Kapas | | Weekly Average Prices (Rs./Quintal) | | Change |
|-----------|-----------|-------------|-------------------------------------|-------------------------------|--------|
| | | | 08th March to 14th March 2019 | 01st March to 07th March 2019 | |
| Gujarat | Ahmedabad | Shankar-6 | 5633 | 5583 | 50 |
| | Gondal | Shankar-6 | 5548 | 5524 | 23 |
| | Rajkot | B.T. Cotton | 5656 | 5559 | 97 |
| | Patan | B.T. Cotton | 5608 | 5540 | 68 |

| | | | | | |
|----------------|----------------|---------------|------------------------------------|-------------------------------|--------|
| | Kadi | B.T. Cotton | 5650 | 5621 | 29 |
| | Deesa | B.T. Cotton | 0 | 0 | Unch |
| | Dhrol | B.T. Cotton | 5268 | 5263 | 5 |
| Haryana | Bhiwani | B.T. Cotton | 5721 | 5650 | 71 |
| | Bhiwani | Desi | 0 | 0 | Unch |
| | Adampur | B.T. Cotton | 5531 | 5447 | 84 |
| | Fatehabad | B.T. Cotton | 5533 | 5465 | 68 |
| | Jind | B.T. Cotton | 5676 | 5742 | -67 |
| | Uchana | B.T. Cotton | 5522 | 5463 | 59 |
| | Dabwali | B.T. Cotton | 4518 | 3557 | 962 |
| Rajasthan | Hanumangarh | B.T. Cotton | 4490 | 5485 | -995 |
| | Rawatsar | B.T. Cotton | 4442 | 5450 | -1008 |
| Madhya Pradesh | Khandwa | Mech-1 | 5601 | 5508 | 92 |
| | Khargaon | Mech-1 | 5513 | 5444 | 69 |
| Maharashtra | Amravati | Mech-1 | 5463 | 5413 | 50 |
| | Jamner | Medium Staple | 0 | 0 | Unch |
| Uttar Pradesh | Hathras | B.T. Cotton | 0 | 3467 | -3467 |
| | Hathras | Desi | 0 | 3167 | -3167 |
| Telangana | Adilabad | Un-Ginned | 5450 | 5338 | 113 |
| Karnataka | Bijapur | Bunny | 5809 | 5658 | 151 |
| | Hubli | D.C.H. | 2657 | 2640 | 17 |
| | Hubli | B.T. Cotton | 0 | 0 | Unch |
| | Raichur | H-44 Cotton | 5508 | 4366 | 1142 |
| Commodity | Lint | | Prices (Rs./Maund of 37.32kg each) | | Change |
| State | Centre | Variety | 08th March to 14th March 2019 | 01st March to 07th March 2019 | |
| Punjab | Bhatinda | J-34 | 4438 | 4420 | 18 |
| | Abohar | J-34 | 4452 | 4429 | 23 |
| | Mansa | J-34 | 4418 | 4398 | 19 |
| Haryana | Sirsa | J-34 | 4375 | 4348 | 27 |
| Rajasthan | Sri-Ganganagar | J-34 | 3292 | 4089 | -797 |

Cotton Arrivals in Key Centers:

| Commodity | Kapas | | Weekly Sum Arrivals (Quintal) | | Change |
|----------------|-------------|---------------|-------------------------------|-------------------------------|--------|
| State | Centre | Variety | 08th March to 14th March 2019 | 01st March to 07th March 2019 | |
| Gujarat | Ahmedabad | Shankar-6 | 290700 | 323000 | -32300 |
| | Gondal | Shankar-6 | 3999 | 5889 | -1890 |
| | Rajkot | B.T. Cotton | 13945 | 16025 | -2080 |
| | Patan | B.T. Cotton | 13524 | 14624 | -1100 |
| | Kadi | B.T. Cotton | 160000 | 180000 | -20000 |
| | Deesa | B.T. Cotton | 0 | 0 | Unch |
| | Dhrol | B.T. Cotton | 778 | 986 | -208 |
| Haryana | Bhiwani | B.T. Cotton | 7100 | 5300 | 1800 |
| | Bhiwani | Desi | 0 | 0 | Unch |
| | Adampur | B.T. Cotton | 2635 | 2635 | Unch |
| | Fatehabad | B.T. Cotton | 1350 | 1450 | -100 |
| | Jind | B.T. Cotton | 4542 | 4590 | -48 |
| | Uchana | B.T. Cotton | 20293 | 14281 | 6012 |
| | Dabwali | B.T. Cotton | 750 | 350 | 400 |
| Rajasthan | Hanumangarh | B.T. Cotton | 4800 | 3000 | 1800 |
| | Rawatsar | B.T. Cotton | 5500 | 3000 | 2500 |
| Madhya Pradesh | Khandwa | Mech-1 | 7031 | 8641 | -1610 |
| | Khargaon | Mech-1 | 9100 | 15310 | -6210 |
| Maharashtra | Amravati | Mech-1 | 85000 | 80001 | 4999 |
| | Jamner | Medium Staple | 0 | 0 | Unch |
| Uttar Pradesh | Hathras | B.T. Cotton | 0 | 50 | -50 |
| | Hathras | Desi | 0 | 0 | Unch |
| Telangana | Adilabad | Un-Ginned | 202080 | 132656 | 69424 |
| Karnataka | Bijapur | Bunny | 6305 | 6488 | -183 |
| | Hubli | D.C.H. | 211 | 354 | -143 |
| | Hubli | B.T. Cotton | 0 | 0 | Unch |
| | Raichur | H-44 Cotton | 2601 | 1581 | 1020 |
| Commodity | Lint | | Weekly Sum Arrivals (Quintal) | | Change |
| State | Centre | Variety | 08th March to 14th March 2019 | 01st March to 07th March 2019 | |
| Punjab | Bhatinda | J-34 | 23800 | 27200 | -3400 |
| | Abohar | J-34 | 3400 | 3740 | -340 |

| | | | | | |
|-----------|----------------|------|------|------|------|
| | Mansa | J-34 | 2295 | 3060 | -765 |
| Haryana | Sirsa | J-34 | 4930 | 4930 | Unch |
| Rajasthan | Sri-Ganganagar | J-34 | 7000 | 3500 | 3500 |

Week on Week Price: Scenario of Cotton:

| Commodity | Kapas | | Today | Week Ago | Month Ago | Year Ago |
|----------------|-------------|---------------|-----------|----------|-----------|-----------|
| State | Centre | Variety | 14-Mar-19 | 7-Mar-19 | 14-Mar-19 | 14-Mar-18 |
| Gujarat | Ahmedabad | Shankar-6 | 5700 | 5625 | 5700 | #N/A |
| | Gondal | Shankar-6 | 5620 | 5550 | 5620 | 5500 |
| | Rajkot | B.T. Cotton | 5840 | 5625 | 5840 | 5530 |
| | Patan | B.T. Cotton | 5770 | 5590 | 5770 | 5515 |
| | Kadi | B.T. Cotton | 5900 | 5700 | 5900 | 5550 |
| | Deesa | B.T. Cotton | 0 | 0 | 0 | NA |
| | Dhrol | B.T. Cotton | 5540 | 5235 | 5540 | NR |
| Haryana | Bhiwani | B.T. Cotton | 5900 | 5700 | 5900 | 5600 |
| | Bhiwani | Desi | 0 | 0 | 0 | NA |
| | Adampur | B.T. Cotton | 5750 | 5525 | 5750 | 5350 |
| | Fatehabad | B.T. Cotton | 5750 | 5550 | 5750 | 5350 |
| | Jind | B.T. Cotton | NA | 5750 | NA | 5700 |
| | Uchana | B.T. Cotton | 5745 | 5535 | 5745 | 5385 |
| | Dabwali | B.T. Cotton | NA | 0 | NA | NR |
| Rajasthan | Hanumangarh | B.T. Cotton | 5770 | 0 | 5770 | Closed |
| | Rawatsar | B.T. Cotton | 5700 | 0 | 5700 | Closed |
| Madhya Pradesh | Khandwa | Mech-1 | 5731 | 5550 | 5731 | 5491 |
| | Khargaon | Mech-1 | 5900 | 5470 | 5900 | 5427 |
| Maharashtra | Amravati | Mech-1 | 5550 | 5475 | 5550 | 5300 |
| | Jamner | Medium Staple | 0 | 0 | 0 | NA |
| Uttar Pradesh | Hathras | B.T. Cotton | 0 | 0 | 0 | NA |
| | Hathras | Desi | 0 | 0 | 0 | NA |
| Telangana | Adilabad | Un-Ginned | 5580 | 0 | 5580 | 5400 |
| Karnataka | Bijapur | Bunny | 6151 | 5699 | 6151 | 5929 |
| | Hubli | D.C.H. | 4501 | 4689 | 4501 | NA |
| | Hubli | B.T. Cotton | NA | 0 | NA | NA |

| | Raichur | H-44 Cotton | 5700 | 5500 | 5700 | 5470 |
|-----------|----------------|-------------|-----------|----------|-----------|-----------|
| Commodity | Lint | | Today | Week Ago | Month Ago | Year Ago |
| State | Centre | Variety | 14-Mar-19 | 7-Mar-19 | 14-Mar-19 | 14-Mar-18 |
| Punjab | Bhatinda | J-34 | 4500 | 4470 | 4500 | 4160 |
| | Abohar | J-34 | 4550 | 4475 | 4550 | 4160 |
| | Mansa | J-34 | 4525 | 4440 | 4525 | 4125 |
| Haryana | Sirsa | J-34 | #N/A | #N/A | #N/A | 4150 |
| Rajasthan | Sri-Ganganagar | J-34 | 4230 | 0 | 4230 | 3854 |

Cotton Arrivals in Key Centers:

| Commodity | Kapas | | Arrivals (Quintal) | Arrivals (Quintal) | Arrivals (Quintal) | Arrivals (Quintal) |
|----------------|-------------|---------------|--------------------|--------------------|--------------------|--------------------|
| State | Centre | Variety | 14-Mar-19 | 7-Mar-19 | 14-Mar-19 | 14-Mar-18 |
| Gujarat | Ahmedabad | Shankar-6 | 47600 | 51000 | 47600 | 59500 |
| | Gondal | Shankar-6 | 562 | 660 | 562 | #N/A |
| | Rajkot | B.T. Cotton | 2400 | 2020 | 2400 | #N/A |
| | Patan | B.T. Cotton | 1700 | 2095 | 1700 | 3450 |
| | Kadi | B.T. Cotton | 30000 | 20000 | 30000 | #N/A |
| | Deesa | B.T. Cotton | 0 | 0 | 0 | #N/A |
| | Dhrol | B.T. Cotton | 59 | 67 | 59 | #N/A |
| Haryana | Bhiwani | B.T. Cotton | 500 | 1500 | 500 | 1200 |
| | Bhiwani | Desi | 0 | 0 | 0 | #N/A |
| | Adampur | B.T. Cotton | 340 | 340 | 340 | #N/A |
| | Fatehabad | B.T. Cotton | 50 | 250 | 50 | #N/A |
| | Jind | B.T. Cotton | NA | 850 | NA | #N/A |
| | Uchana | B.T. Cotton | 1275 | 4495 | 1275 | #N/A |
| | Dabwali | B.T. Cotton | NA | 0 | NA | #N/A |
| Rajasthan | Hanumangarh | B.T. Cotton | 500 | 0 | 500 | #N/A |
| | Rawatsar | B.T. Cotton | 500 | 0 | 500 | #N/A |
| Madhya Pradesh | Khandwa | Mech-1 | 774 | 1630 | 774 | #N/A |
| | Khargaon | Mech-1 | 1120 | 1660 | 1120 | #N/A |
| Maharashtra | Amravati | Mech-1 | 15000 | 15000 | 15000 | #N/A |
| | Jamner | Medium Staple | 0 | 0 | 0 | #N/A |
| Uttar Pradesh | Hathras | B.T. Cotton | 0 | 0 | 0 | #N/A |
| | Hathras | Desi | 0 | 0 | 0 | #N/A |

| | | | | | | |
|------------------|----------------|----------------|-------------------------------|-------------------------------|-------------------------------|-------------------------------|
| Telangana | Adilabad | Un-Ginned | 23370 | 0 | 23370 | 4591 |
| Karnataka | Bijapur | Bunny | 1903 | 691 | 1903 | 2766 |
| | Hubli | D.C.H. | 200 | 37 | 200 | 4 |
| | Hubli | B.T. Cotton | NA | 0 | NA | 0 |
| | Raichur | H-44 Cotton | 360 | 352 | 360 | 892 |
| Commodity | Lint | | Arrivals (Quintal) | Arrivals (Quintal) | Arrivals (Quintal) | Arrivals (Quintal) |
| State | Centre | Variety | 14-Mar-19 | 7-Mar-19 | 14-Mar-19 | 14-Mar-18 |
| Punjab | Bhatinda | J-34 | 1700 | 4250 | 1700 | 6800 |
| | Abohar | J-34 | 340 | 680 | 340 | 1020 |
| | Mansa | J-34 | 170 | 340 | 170 | 680 |
| | Sirsa | J-34 | 85 | 1700 | 85 | 1700 |
| | Sri-Ganganagar | J-34 | 2000 | 0 | 2000 | 400 |

Disclaimer

The information and opinions contained in the document have been compiled from sources believed to be reliable. The company does not warrant its accuracy, completeness and correctness. Use of data and information contained in this report is at your own risk. This document is not, and should not be construed as, an offer to sell or solicitation to buy any commodities. This document may not be reproduced, distributed or published, in whole or in part, by any recipient hereof for any purpose without prior permission from the Company. IASL and its affiliates and/or their officers, directors and employees may have positions in any commodities mentioned in this document (or in any related investment) and may from time to time add to or dispose of any such commodities (or investment). Please see the detailed disclaimer at <http://www.agriwatch.com/Disclaimer.asp>

© 2019 Indian Agribusiness Systems Ltd.