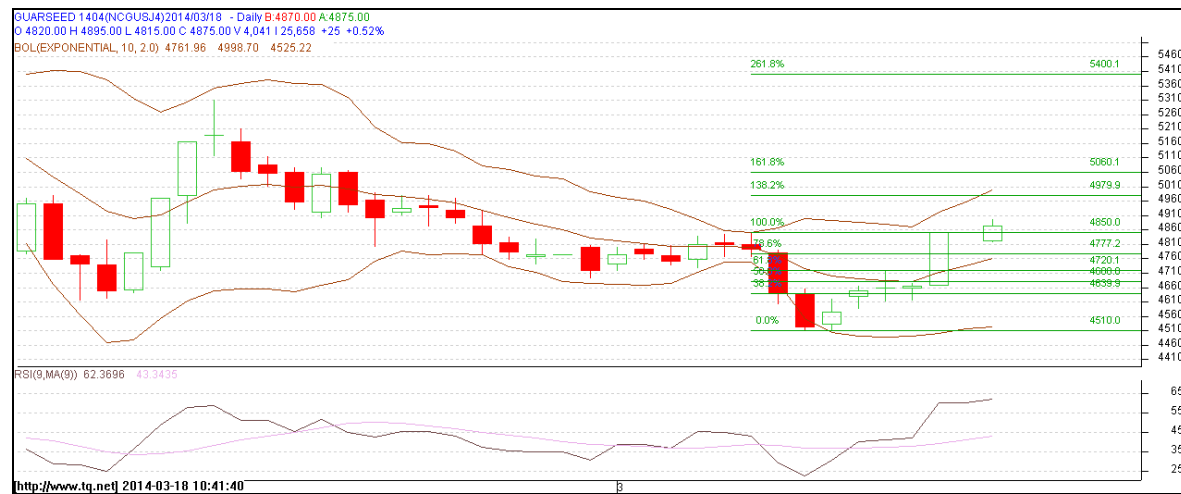


Commodity: Guar seed
Contract: April

Exchange: NCDEX
Expiry: April 20th, 2014

Guar Seed



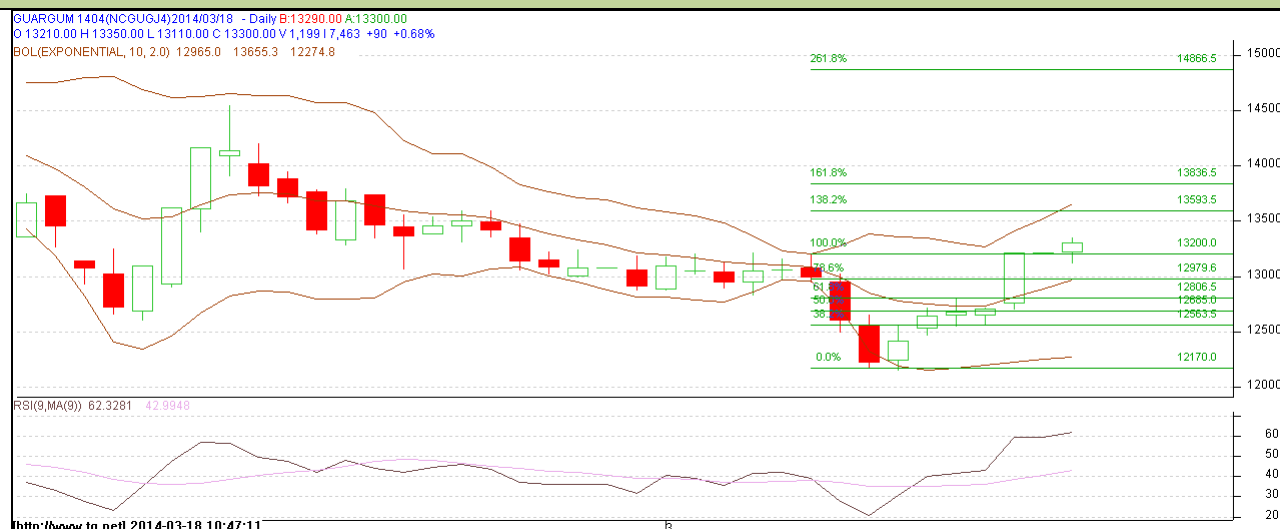
Technical Commentary:

- Prices are moving in a downward trend as chart depicts.
- Last candlestick depicts bullishness in the market.
- Also, RSI is hovering near to neutral region.

Strategy: Buy

Intraday Supports & Resistances			S2	S1	PCP	R1	R2
Guar Seed	NCDEX	Apr	4640	4680	4850	4980	5060
Intraday Trade Call			Call	Entry	T1	T2	SL
Guar Seed	NCDEX	Apr	Buy	Above 4780	4880	4930	4720

Do not carry forward the position until the next day.

Commodity: Guar Gum
Contract: Apr
Exchange: NCDEX
Expiry: April 20th, 2014
Guar Gum

Technical Commentary:

- Prices are moving in a downtrend as chart depicts.
- RSI is moving between oversold and neutral region.
- Last candlestick depicts bullishness in the market.

Strategy: Buy

Intraday Supports & Resistances			S2	S1	PCP	R1	R2
Guar gum	NCDEX	April	12680	12800	13210	13600	13836
Intraday Trade Call			Call	Entry	T1	T2	SL
Guar gum	NCDEX	April	Buy	Above 13100	13300	13400	12980

Do not carry forward the position until the next day.

Disclaimer

The information and opinions contained in the document have been compiled from sources believed to be reliable. The company does not warrant its accuracy, completeness and correctness. Use of data and information contained in this report is at your own risk. This document is not, and should not be construed as, an offer to sell or solicitation to buy any commodities. This document may not be reproduced, distributed or published, in whole or in part, by any recipient hereof for any purpose without prior permission from the Company. IASL and its affiliates and/or their officers, directors and employees may have positions in any commodities mentioned in this document (or in any related investment) and may from time to time add to or dispose of any such commodities (or investment). Please see the detailed disclaimer at <http://www.agriwatch.com/Disclaimer.asp>

© 2013 Indian Agribusiness Systems Pvt Ltd.