

Commodity: Guar seed 10MT
Contract: Oct

Exchange: NCDEX
Expiry: Oct 20th, 2014

Guar Seed 10MT



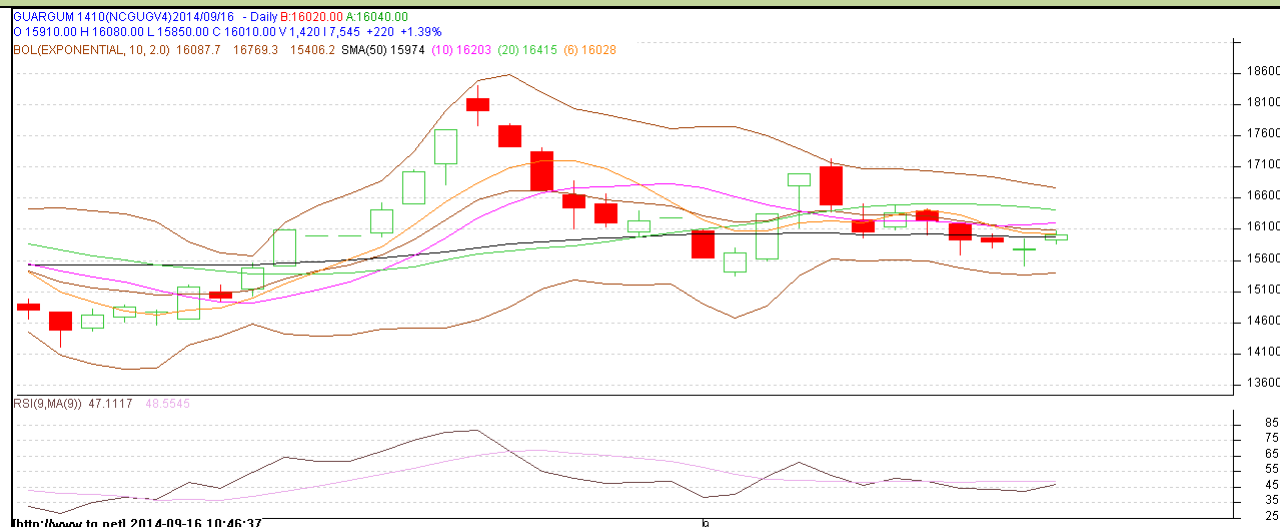
Technical Commentary:

- Prices are still moving in a upward trend as chart depicts.
- Last candlestick depicts short term bearishness in the market.
- Also, RSI is hovering near to neutral region.

Strategy: Sell

Intraday Supports & Resistances			S2	S1	PCP	R1	R2
Guar Seed10MT	NCDEX	Oct	5054	5380	5550	6140	6327
Intraday Trade Call			Call	Entry	T1	T2	SL
Guar Seed 10MT	NCDEX	Oct	Sell	Below 5630	5530	5500	5690

Do not carry forward the position until the next day.

Commodity: Guar Gum
Contract: Oct
Exchange: NCDEX
Expiry: Oct 20th, 2014
Guar Gum

Technical Commentary:

- Prices are moving in an upward trend as chart depicts.
- RSI is moving near to neutral region.
- Last candlestick depicts indecision in the market.

Strategy: Sell

Intraday Supports & Resistances			S2	S1	PCP	R1	R2
Guar gum	NCDEX	Oct	14200	15110	15790	17226	17743
Intraday Trade Call			Call	Entry	T1	T2	SL
Guar gum	NCDEX	Oct	Sell	Below 16120	15900	15800	16252

Do not carry forward the position until the next day.

Disclaimer

The information and opinions contained in the document have been compiled from sources believed to be reliable. The company does not warrant its accuracy, completeness and correctness. Use of data and information contained in this report is at your own risk. This document is not, and should not be construed as, an offer to sell or solicitation to buy any commodities. This document may not be reproduced, distributed or published, in whole or in part, by any recipient hereof for any purpose without prior permission from the Company. IASL and its affiliates and/or their officers, directors and employees may have positions in any commodities mentioned in this document (or in any related investment) and may from time to time add to or dispose of any such commodities (or investment). Please see the detailed disclaimer at <http://www.agriwatch.com/Disclaimer.asp>

© 2014 Indian Agribusiness Systems Pvt Ltd.