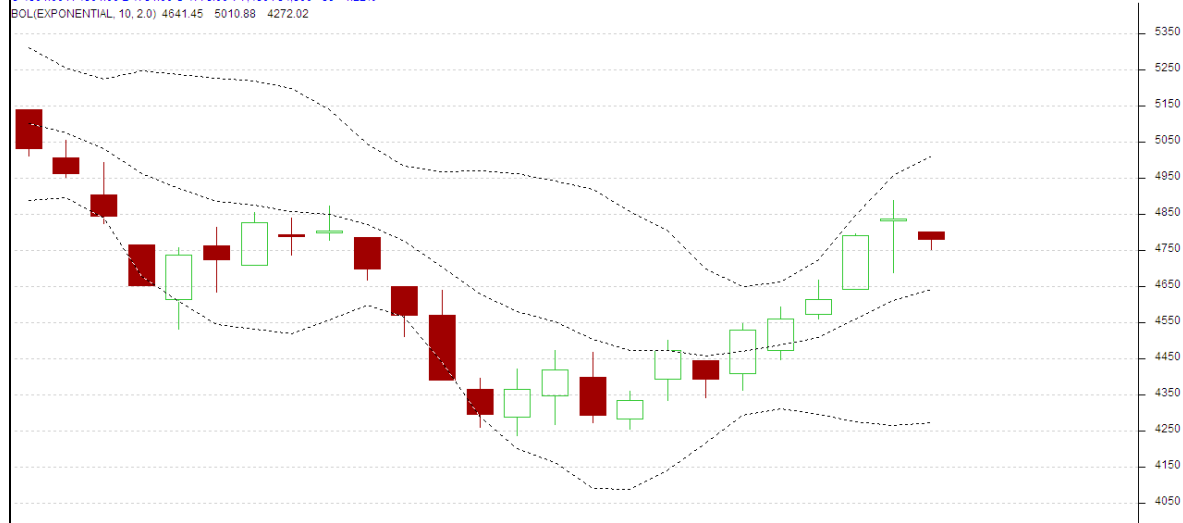


**Commodity: Guar seed 10MT**  
**Contract: Jan**

**Exchange: NCDEX**  
**Expiry: Jan 20<sup>th</sup>, 2014**

### Guar Seed 10MT

GUAR SEED 1501(NCGRSF5)2014/12/30 - Daily B:4778.00 A:4779.00  
 O:4801.00 H:4801.00 L:4751.00 C:4778.00 V:7.480 I:34.500 -59 -1.22%  
 BOLL(EXPONENTIAL, 10, 2.0) 4641.45 5010.88 4272.02



#### Technical Commentary:

- Guar prices are showing upward correction as chart depicts.
- Last candlestick depicts indecision in the market.
- Also, RSI is hovering at oversold region.

#### Strategy: Sell

Intraday Supports & Resistances			S2	S1	PCP	R1	R2
Guar Seed10MT	NCDEX	Jan	4370	4650	4837	5140	5600
Intraday Trade Call			Call	Entry	T1	T2	SL
Guar Seed 10MT	NCDEX	Jan	<b>Sell</b>	Below 4800	4700	4660	4860

Do not carry forward the position until the next day.

**Commodity: Guar Gum**  
**Contract: Jan**
**Exchange: NCDEX**  
**Expiry: Jan 20<sup>th</sup>, 2014**
**Guar Gum**

**Technical Commentary:**

- Prices are showing upward correction.
- RSI is moving at oversold region.
- Last candlestick depicts bullishness in the market.

**Strategy: Sell**

Intraday Supports & Resistances			S2	S1	PCP	R1	R2
Guar gum	NCDEX	Jan	12128	12400	12940	13520	14380
Intraday Trade Call			Call	Entry	T1	T2	SL
Guar gum	NCDEX	Jan	<b>Sell</b>	Below 12900	12700	12600	13020

Do not carry forward the position until the next day.

**Disclaimer**

The information and opinions contained in the document have been compiled from sources believed to be reliable. The company does not warrant its accuracy, completeness and correctness. Use of data and information contained in this report is at your own risk. This document is not, and should not be construed as, an offer to sell or solicitation to buy any commodities. This document may not be reproduced, distributed or published, in whole or in part, by any recipient hereof for any purpose without prior permission from the Company. IASL and its affiliates and/or their officers, directors and employees may have positions in any commodities mentioned in this document (or in any related investment) and may from time to time add to or dispose of any such commodities (or investment). Please see the detailed disclaimer at <http://www.agriwatch.com/Disclaimer.asp>  
 © 2014 Indian Agribusiness Systems Pvt Ltd.