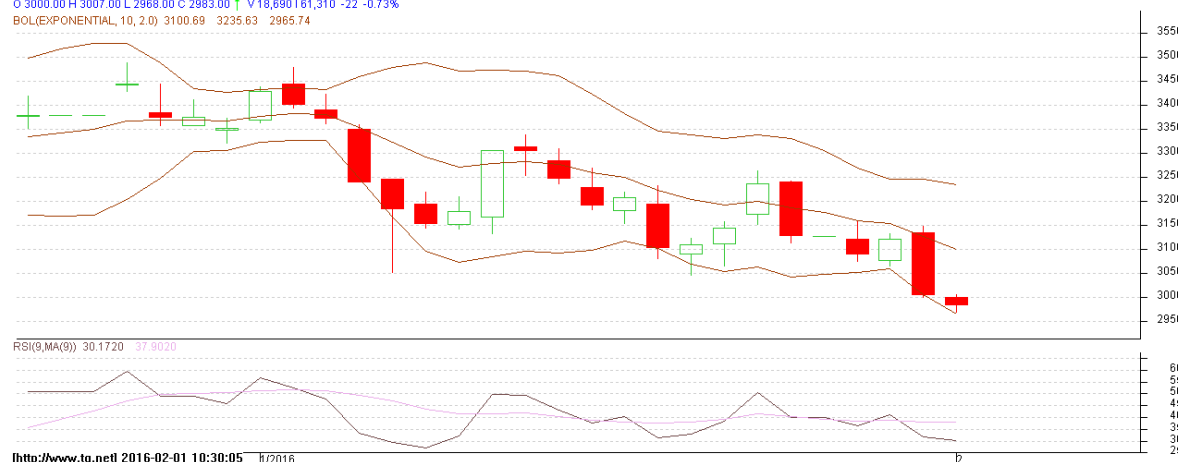


**Commodity: Guar seed 10MT**  
**Contract: Feb**

**Exchange: NCDEX**  
**Expiry: Feb 20<sup>th</sup>, 2016**

### Guar Seed 10MT

GUAR SEED 1602(NCGRSG6)2016/02/01 - Daily B:2981.00 A:2983.00  
 O 3000.00 H 3007.00 L 2968.00 C 2983.00 ↑ V 18,690 I 61,310 -22 -0.73%  
 BOL(EXPONENTIAL, 10, 2.0) 3100.69 3235.63 2965.74



### Technical Commentary:

- Guar prices are moving in a downward trend.
- Last candlestick pattern depicts bearishness in the market.
- Also, RSI is hovering near to oversold region.

### Strategy: Sell

Intraday Supports & Resistances			S2	S1	PCP	R1	R2
Guar Seed10MT	NCDEX	Feb	2700	2900	3005	3300	3450
Intraday Trade Call			Call	Entry	T1	T2	SL
Guar Seed 10MT	NCDEX	Feb	<b>Sell</b>	Below 3000	2950	2930	3030

Do not carry forward the position until the next day.

**Commodity: Guar Gum**  
**Contract: Feb**
**Exchange: NCDEX**  
**Expiry: Feb 20<sup>th</sup>, 2016**

### Guar Gum



#### Technical Commentary:

- Guar gum prices are moving in a downward trend.
- RSI is moving near to neutral region.
- Last candlestick pattern depicts bearishness in the market.

#### Strategy: Sell

Intraday Supports & Resistances			S2	S1	PCP	R1	R2
Guar gum	NCDEX	Feb	5210	5460	5640	6500	7200
Intraday Trade Call			Call	Entry	T1	T2	SL
Guar gum	NCDEX	Feb	<b>Sell</b>	Below 5650	5550	5500	5710

Do not carry forward the position until the next day.

#### Disclaimer

The information and opinions contained in the document have been compiled from sources believed to be reliable. The company does not warrant its accuracy, completeness and correctness. Use of data and information contained in this report is at your own risk. This document is not, and should not be construed as, an offer to sell or solicitation to buy any commodities. This document may not be reproduced, distributed or published, in whole or in part, by any recipient hereof for any purpose without prior permission from the Company. IASL and its affiliates and/or their officers, directors and employees may have positions in any commodities mentioned in this document (or in any related investment) and may from time to time add to or dispose of any such commodities (or investment). Please see the detailed disclaimer at <http://www.agriwatch.com/Disclaimer.asp>

© 2015 Indian Agribusiness Systems Pvt Ltd.