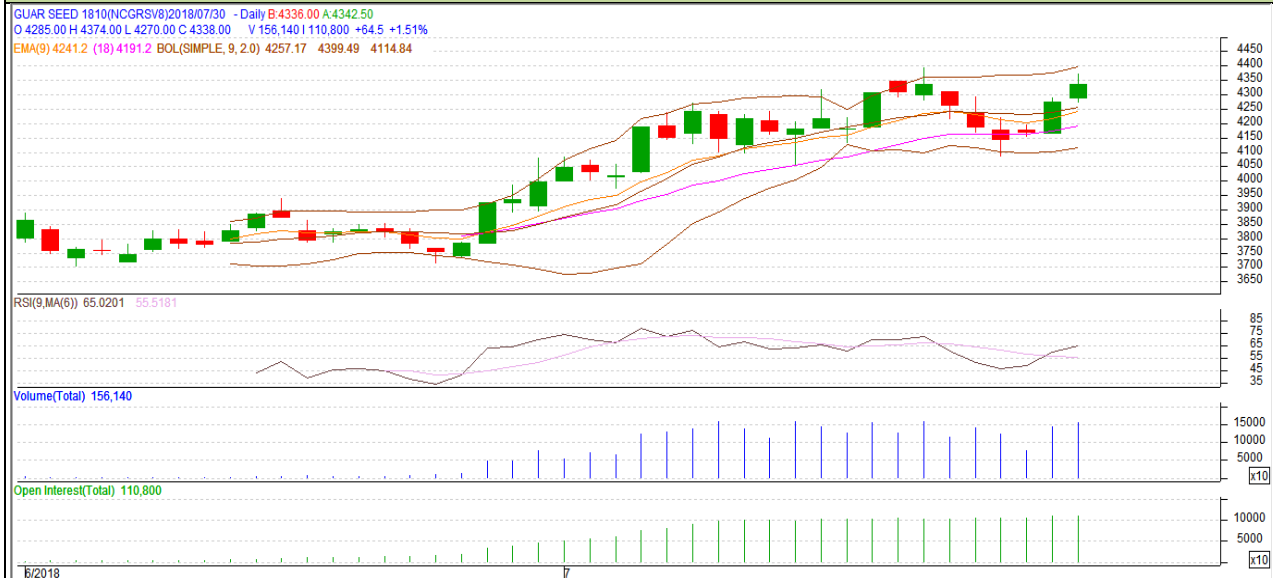


Commodity: Guar seed  
Contract: October

Exchange: NCDEX  
Expiry: 16<sup>th</sup> Oct, 2018

### Guar Seed



### Technical Commentary

- Rise in price and fall in open interest indicates short covering.
- RSI is moving in neutral region.
- Prices closed between 9 and 18 days EMAs.

### Strategy: Buy

Intraday Supports & Resistances			S1	S2	PCP	R1	R2
Guar Seed	NCDEX	October	4275	4250	4338	4405	4420
Intraday Trade Call			Call	Entry	T1	T2	SL
Guar Seed	NCDEX	October	Buy	4330	4365	4385	4309

Do not carry forward the position until the next day.

**Commodity: Guar Gum**  
**Contract: October**
**Exchange: NCDEX**  
**Expiry: 16<sup>th</sup> Oct, 2018**
**Guar Gum**

**Technical Commentary**

- Rise in price and open interest indicates long buildup.
- RSI is moving in neutral region.
- Prices closed between 9 and 18 days EMAs.

**Strategy: Buy**

Intraday Supports & Resistances			S1	S2	PCP	R1	R2
Guar gum	NCDEX	October	9240	9155	9440	9725	9810
Intraday Trade Call			Call	Entry	T1	T2	SL
Guar gum	NCDEX	October	Buy	9420	9535	9620	9351

Do not carry forward the position until the next day.

**Disclaimer**

The information and opinions contained in the document have been compiled from sources believed to be reliable. The company does not warrant its accuracy, completeness and correctness. Use of data and information contained in this report is at your own risk. This document is not, and should not be construed as, an offer to sell or solicitation to buy any commodities. This document may not be reproduced, distributed or published, in whole or in part, by any recipient hereof for any purpose without prior permission from the Company. IASL and its affiliates and/or their officers, directors and employees may have positions in any commodities mentioned in this document (or in any related investment) and may from time to time add to or dispose of any such commodities (or investment). Please see the detailed disclaimer at <http://www.agriwatch.com/disclaimer.php> © 2018 Indian Agribusiness Systems Ltd.