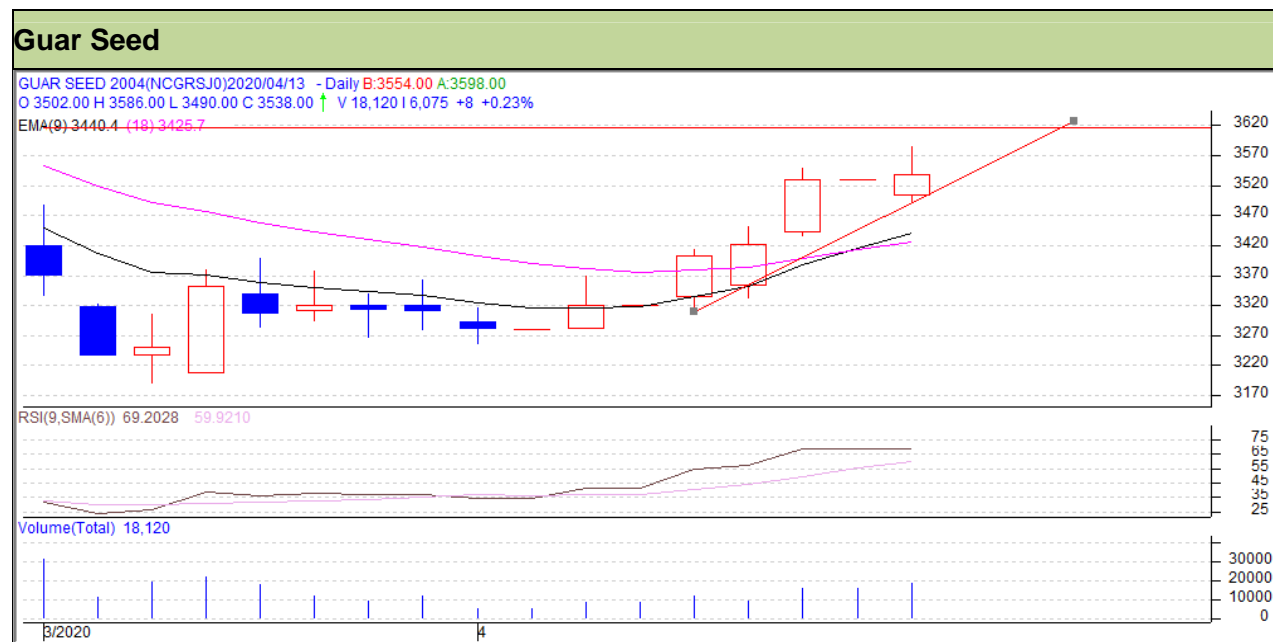


**Commodity: Guar seed**  
**Contract: April**
**Exchange: NCDEX**  
**Expiry: 20<sup>th</sup> April, 2020**

**Technical Commentary**

- Rise in prices and volume indicates long build up phase.
- RSI is moving in neutral region.
- Prices closed above 9 and 18 EMAs.

**Strategy: Buy**

Intraday Supports & Resistances			S1	S2	PCP	R1	R2
Guar Seed	NCDEX	Apr	3435	3320	3538	3610	3630
Intraday Trade Call			Call	Entry	T1	T2	SL
Guar Seed	NCDEX	Apr	<b>Buy</b>	3520	3555	3580	3475

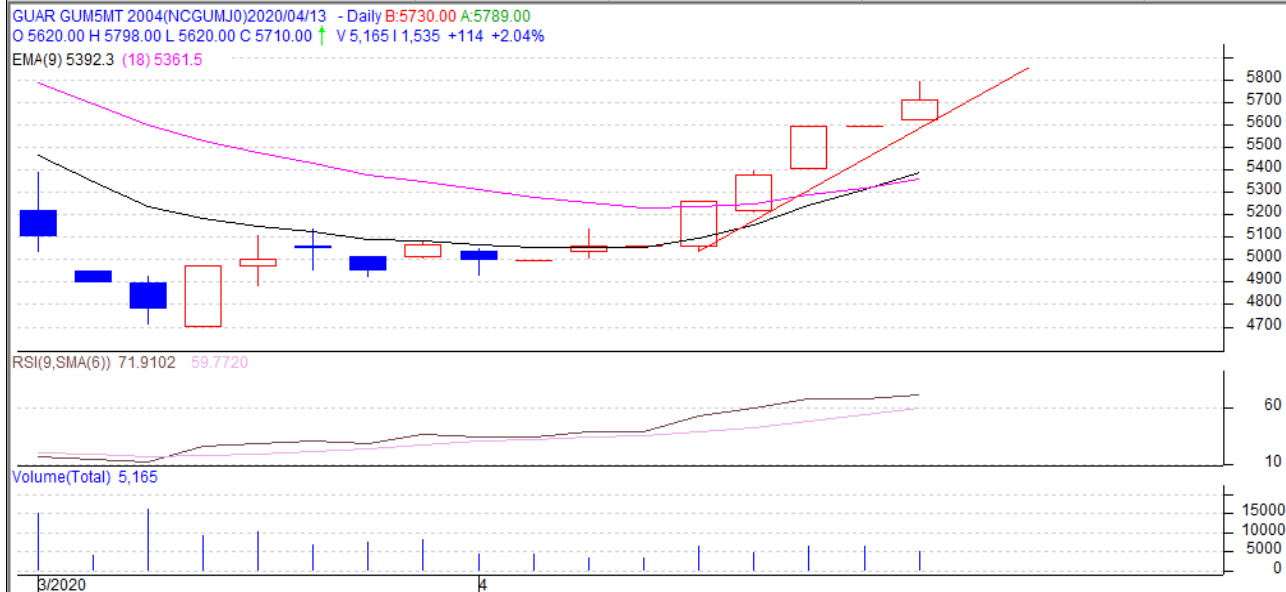
Do not carry forward the position until the next day.



**Commodity: Guar Gum**  
**Contract: April**

**Exchange: NCDEX**  
**Expiry: 20<sup>th</sup> April, 2020**

### Guar Gum



### Technical Commentary

- Rise in price and volume indicates long build up phase.
- RSI is moving in neutral region.
- Prices closed near 9 and 18 EMAs.

### Strategy: Buy

Intraday Supports & Resistances			S1	S2	PCP	R1	R2
Guar gum	NCDEX	Apr	5500	5555	5710	5835	5860
Intraday Trade Call			Call	Entry	T1	T2	SL
Guar gum	NCDEX	Apr	Buy	5680	5765	5790	5595

Do not carry forward the position until the next day.

### Disclaimer

The information and opinions contained in the document have been compiled from sources believed to be reliable. The company does not warrant its accuracy, completeness and correctness. Use of data and information contained in this report is at your own risk. This document is not, and should not be construed as, an offer to sell or solicitation to buy any commodities. This document may not be reproduced, distributed or published, in whole or in part, by any recipient hereof for any purpose without prior permission from the Company. IASL and its affiliates and/or their officers, directors and employees may have positions in any commodities mentioned in this document (or in any related investment) and may from time to time add to or dispose of any such commodities (or investment). Please see the detailed disclaimer at <http://www.agriwatch.com/disclaimer.php> 2020 Indian Agribusiness Systems Ltd.