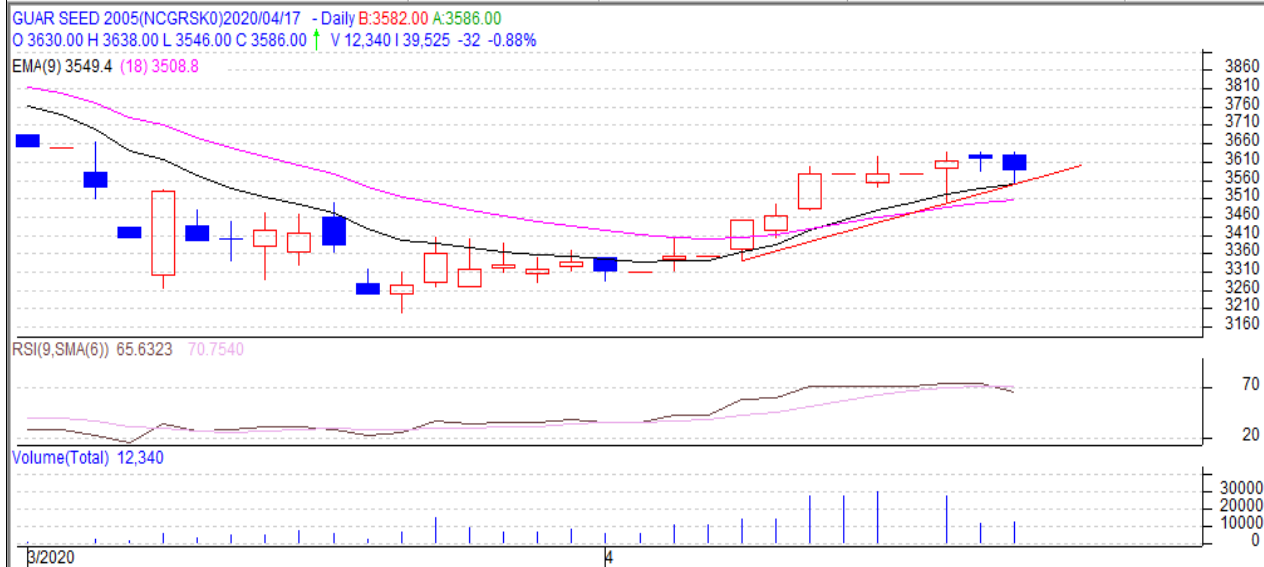


Commodity: Guar seed
Contract: May
Exchange: NCDEX
Expiry: 20th May, 2020
Guar Seed

Technical Commentary

- Fall in prices and volume indicates short build up phase.
- RSI is moving in neutral region.
- Prices closed above 9 and 18 EMAs.

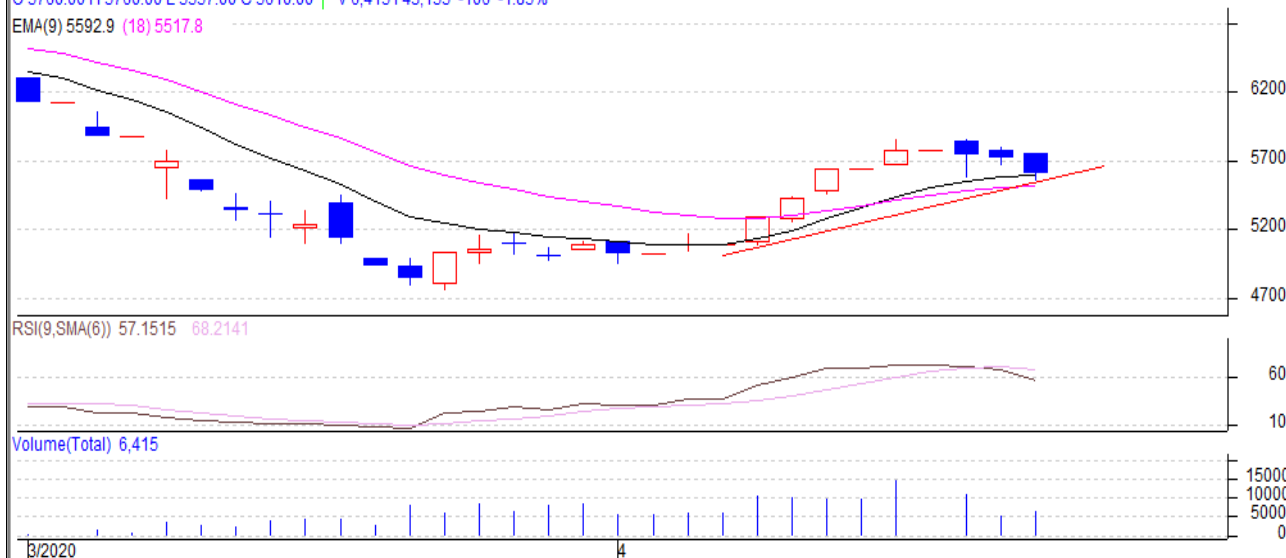
Strategy: Sell

| Intraday Supports & Resistances | | | S1 | S2 | PCP | R1 | R2 |
|---------------------------------|-------|-----|-------------|-------|------|------|------|
| Guar Seed | NCDEX | May | 3450 | 3490 | 3586 | 3670 | 3700 |
| Intraday Trade Call | | | Call | Entry | T1 | T2 | SL |
| Guar Seed | NCDEX | May | Sell | 3586 | 3540 | 3520 | 3640 |

Do not carry forward the position until the next day.

Commodity: Guar Gum
Contract: May
Exchange: NCDEX
Expiry: 20th May, 2020
Guar Gum

GUAR GUM5MT 2005(NCGUMK0)2020/04/17 - Daily B:5600.00 A:5619.00
 O 5760.00 H 5760.00 L 5557.00 C 5610.00 ↑ V 6,415 I 43,155 -106 -1.85%
 EMA(9) 5592.9 (18) 5517.8


Technical Commentary

- Fall in price and volume indicates short build up phase.
- RSI is moving in neutral region.
- Prices closed near 9 and 18 EMAs.

Strategy: Sell

| Intraday Supports & Resistances | | | S1 | S2 | PCP | R1 | R2 |
|---------------------------------|-------|-----|-------------|-------|------|------|------|
| Guar gum | NCDEX | May | 5420 | 5470 | 5610 | 5770 | 5820 |
| Intraday Trade Call | | | Call | Entry | T1 | T2 | SL |
| Guar gum | NCDEX | May | Sell | 5620 | 5520 | 5480 | 5700 |

Do not carry forward the position until the next day.

Disclaimer

The information and opinions contained in the document have been compiled from sources believed to be reliable. The company does not warrant its accuracy, completeness and correctness. Use of data and information contained in this report is at your own risk. This document is not, and should not be construed as, an offer to sell or solicitation to buy any commodities. This document may not be reproduced, distributed or published, in whole or in part, by any recipient hereof for any purpose without prior permission from the Company. IASL and its affiliates and/or their officers, directors and employees may have positions in any commodities mentioned in this document (or in any related investment) and may from time to time add to or dispose of any such commodities (or investment). Please see the detailed disclaimer at <http://www.agriwatch.com/disclaimer.php> 2020 Indian Agribusiness Systems Ltd.