

**Commodity: Guar seed**  
**Contract: Jan**
**Exchange: NCDEX**  
**Expiry: Jan 20th, 2022**
**Technical Chart: Daily time frame**


Violet histogram Indicates WTI crude oil daily price movement without axis.

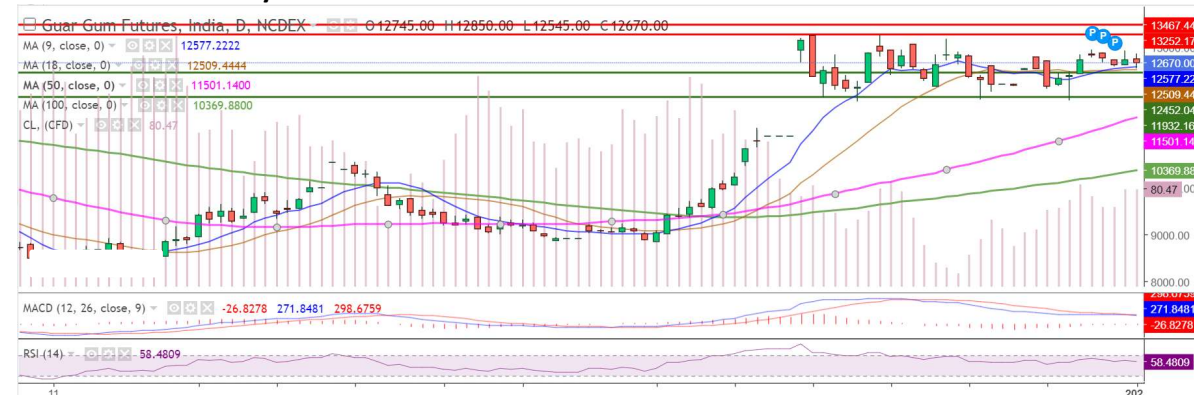
- As seen in the above chart, market is trading above 9,18,50 and 100 DMA, indicating strong sentiments.
- During the day market went down marginally by 0.37% and made high at 6,024, low at 5,921 and closed at 5,964.
- MACD is indicating firm momentum.
- RSI is near 60, indicating firm sentiments.

Intraday Supports & Resistances			S1	S2	PCP	R1	R2
Guar Seed	NCDEX	Jan	5750	5600	5964	6200	6400
Intraday Trade Call			Call	Entry	T1	T2	SL
Guar seed	NCDEX	Jan	Buy	5900	6100	6200	5800

**Commodity: Guar Gum**  
**Contract: Jan**

**Exchange: NCDEX**  
**Expiry: Jan 20th, 2022**

### Technical Chart: Daily time frame



Violet histogram Indicates WTI crude oil daily price movement without axis.

- As seen in the above chart, market is trading well above 9,18,50 and 100 DMA indicating strong momentum.
- During the day market went down marginally by 0.34% and made high at 12,850, low at 12,545 and closed at 12,670.
- MACD is indicating firm momentum.
- RSI is near 60, indicating firm momentum.

Intraday Supports & Resistances			S1	S2	PCP	R1	R2
Guar Gum	NCDEX	Jan	12400	12200	12670	13200	13400
Intraday Trade Call			Call	Entry	T1	T2	SL
Guar Gum	NCDEX	Jan	Buy	12600	13000	13100	12500

\* Do not carry-forward the position next day.

### Disclaimer

The information and opinions contained in the document have been compiled from sources believed to be reliable. The company does not warrant its accuracy, completeness and correctness. Use of data and information contained in this report is at your own risk. This document is not, and should not be construed as, an offer to sell or solicitation to buy any commodities. This document may not be reproduced, distributed or published, in whole or in part, by any recipient hereof for any purpose without prior permission from the Company. IASL and its affiliates and/or their officers, directors and employees may have positions in any commodities mentioned in this document (or in any related investment) and may from time to time add to or dispose of any such commodities (or investment). Please see the detailed disclaimer at <http://www.agriwatch.com/Disclaimer.asp>  
© 2022 Indian Agribusiness Systems Limited