

Guar Weekly Research Report

Table of Contents

- ❖ **Executive Summary**
- ❖ **Recommendations**
- ❖ **Domestic Market Fundamentals**
- ❖ **Processing Margins**
- ❖ **Guar Seed to Gum Ratio**
- ❖ **Guar Gum Weekly Exports**
- ❖ **Technical Analysis (Guar Seed)**
- ❖ **Technical Analysis (Guar Gum)**
- ❖ **Guar Seed & Gum Prices at Key Spot Markets**
- ❖ **Guar Seed Arrivals at Key Centers**

Guar Seed Fundamental Analysis and

Executive Summary

Domestic Guar Seed Market Summary

No major trading activities are seen in spot markets because of lock down in India.

All India weekly average prices rose by 6.73 percent to Rs. 3345.71 per quintal during the week ended 30th Mar 2020. Guar seed (Cluster bean seeds) average price were ruling at Rs. 3134.60 per quintal during 16th March to 23rd March 2020. As compared to prices in the week 24-31 March 2019, the prices are lower by 14.71%. There is no major trading activity in Guar Gum complex as lock down in India has been extended until 3rd May 2020 to prevent from spreading COVID-19.

As per data released by Baker Hughes, the number of oilrigs in USA has lowered by 64 to 465 as on 24th April 2020 compared to 529 in last week and down by 526 compared to 26th April 2019. Total number of oilrigs was recorded at 3085 in March '20 compared to 5113 in the corresponding period in last year. Therefore, exports are being affected.

Currently, 28.55 lakh cases in the world have been identified under Coronavirus impact where 1.98 lakh people could not survive and 8.15 lakh people were recovered. The outbreak has reached almost whole of the world. This has led to lockdown of various countries leading to breakdown of global supply chain. Many countries have imposed complete lock down to prevent from COVID-19. India has extended its lock down period for two more weeks from 14th April 2020 after few reliefs in agriculture and supply chain sectors.

Previous Updates:

As per trade sources, export of guar split has declined in the month of February-20. Exports in the month of February-20 are lower by around 40% compared to previous month. India exported around 2020 tonnes of guar split in the month of February-20 at an average FoB of \$ 1119 per tonne. Of the total quantity, around 1700 tonnes have been exported to China.

As per trade sources, export of guar gum has declined in the month of February-20 by 38.27 percent compared to previous month. India exported around 14596.11 tonnes of guar gum at an average FoB of \$ 1685.40 per tonne in the month of February-20 compared to 23178.89 tonnes in January-20 at an average FoB of \$ 1710.37 per tonne. Exports are expected to decline in March-20 on weak demand in overseas markets.

Recommendation:

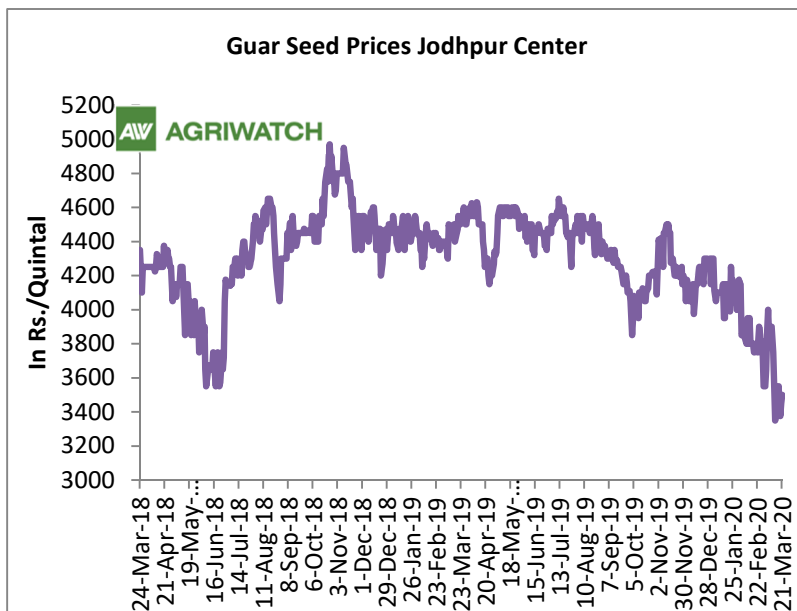
Weekly Call- : Market participants are advised to Buy Guar seed future May contract at 3380 levels for a target of 3450 with a stop loss at 3550 on closing basis.

Outlook:-

[\(Back to Table of Contents\)](#)

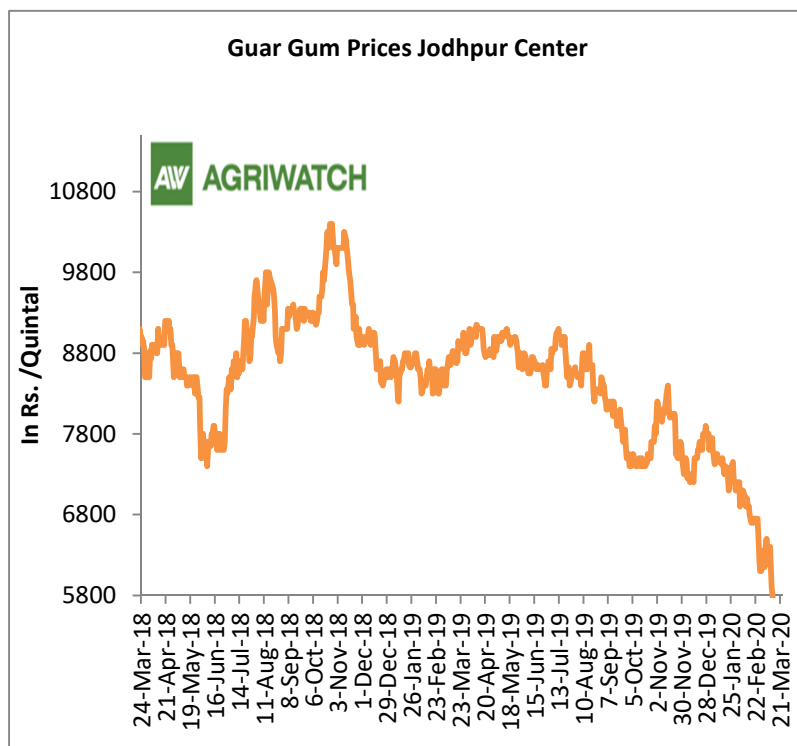
Domestic Front

- No trading activities amid lock down in India. Therefore, no major updates in charts and sentiments.



- No trading activities amid lock down in India. Therefore, no major updates in charts and sentiments.

- According to second advance estimate for 2019-20, issued by Gujarat's Department of Agriculture for Guar seed, the area, production and yield are 145000 hectares, 107960 tonnes and 744.52 kg/hectare respectively. As per final estimate for 2018-19 issued by Gujarat's Department of Agriculture for Guar seed the area, production and yield are 134100 hectares, 75380 tonnes and 562.11 kg/hectare respectively.



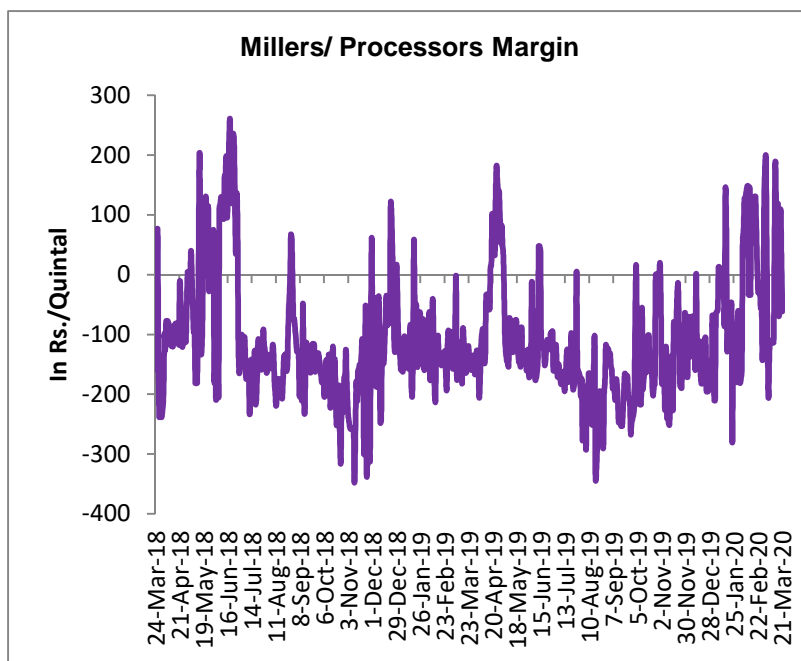
- According to second advance estimate for Kharif 2019-20, issued by Rajasthan's Department of Agriculture for Guar seed, the area, production and yield are 2841314 hectares, 1208100 tonnes and 425 kg/hectare respectively.

According to fourth advance estimate for 2018-19, issued by Rajasthan's Department of Agriculture for Guar seed, the area, production and yield are 3087789 hectares, 1031427 tonnes and 334 kg/hectare respectively.

Millers/Processors Margin

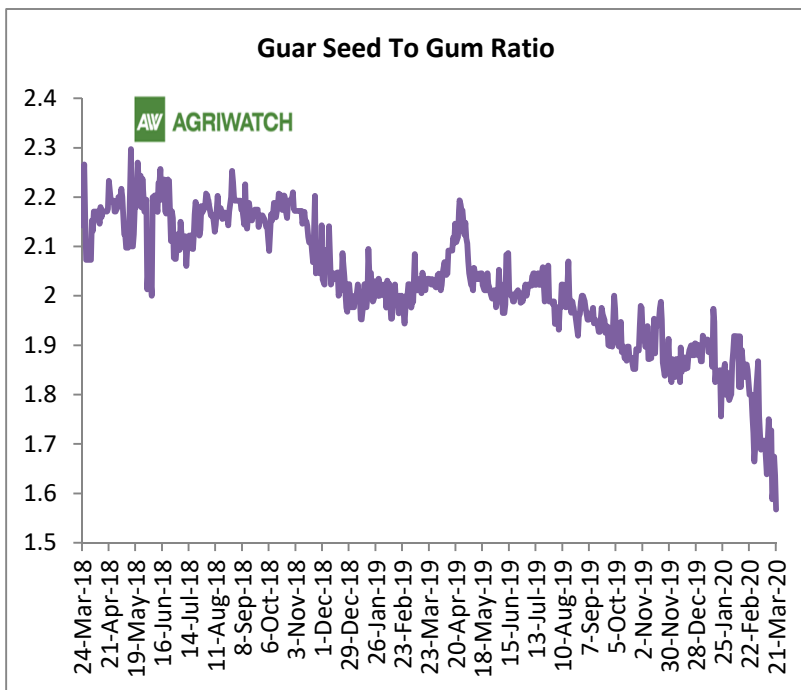
[\(Back to Table of Contents\)](#)

No trading activities amid lock down in India. Therefore, no major updates in charts and sentiments.



Guar Seed to Gum Ratio

No major trading activity in India due to lock down in India. Therefore, no major updates in charts and sentiments.



Guar Gum Weekly Export

[\(Back to Table of Contents\)](#)

Week On Week Exports	Quantity in MT	Average FoB (\$/T)
01-08 February-2020	2968.84	1621.83
9-16 February-2020	3171.51	1841.83
17-24 February-2020	3833.68	1576.78
25-31 February-2020	4344.01	1787.24
Total	14596.11	1685.4

Source: Trade



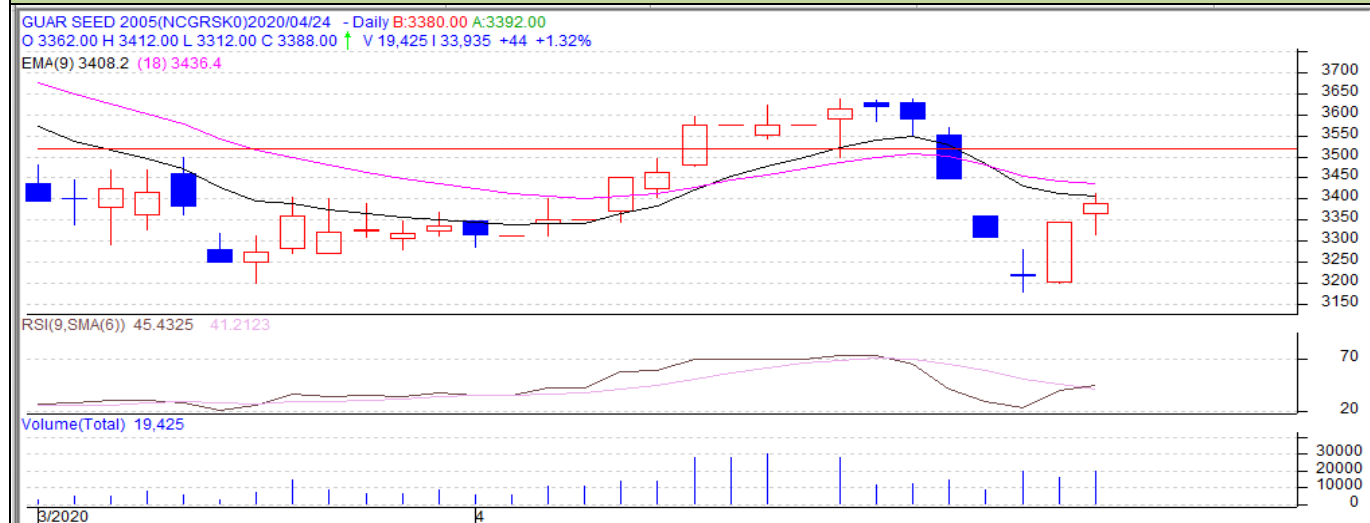
Technical Analysis (Guar Seed)

(Back to Table of Contents)

Commodity: Guar Seed
Contract: May

Exchange: NCDEX
Expiry: May 20, 2020

Guar Seed (May Daily Chart)



Technical Commentary:

- Rise in prices and volume indicates long build up phase.
- RSI is moving in neutral region.
- Prices closed near 9 and 18 EMAs.

Strategy: Buy

Weekly Supports & Resistances			S1	S2	PCP	R1	R2
Guar Seed	NCDEX	May	3180	3254	3388	3570	3650
Weekly Trade Call			Call	Entry	T1	T2	SL
Guar Seed	NCDEX	May	Buy	Above 3380	3450	3550	3300



Technical Analysis (Guar Gum)

[\(Back to Table of Contents\)](#)

Commodity: Guar Gum
Contract: May

Exchange: NCDEX
Expiry: May. 20, 2020



Technical Commentary:

- Fall in prices and volume indicates short build up phase.
- RSI is moving in neutral region.
- Prices closed near 9 and 18 EMAs.

Strategy: Sell

Weekly Supports & Resistances			S1	S2	PCP	R1	R2
Guar Gum	NCDEX	May	4500	4600	4829	5110	5250
Weekly Trade Call			Call	Entry	T1	T2	SL
Guar Gum	NCDEX	May	Sell	Below 4835	4700	4600	4920

Guar Seed & Gum Prices at Key Spot Markets

[\(Back to Table of Contents\)](#)

Guar by – Products Weekly Average Prices				(Prices in Rs/75kg)
Commodity	Centre	17th April to 23rd April 2020	10th April to 16th April 2020	Change
Churi	Jodhpur	2360	2350	10
Korma	Jodhpur	2505	2475	30
Churi	Sri-Ganganagar	2235	2250	-15
Korma	Sri-Ganganagar	2543	2550	-7

Guar Export Weekly Average Prices				(Prices in \$/MT)
Commodity	Variety	17th April to 23rd April 2020	10th April to 16th April 2020	Change
Guargum Split		Closed	Closed	-
Guargum Powder	200 Mesh 5000 CPS	Closed	Closed	-
	200 Mesh 3500 CPS	Closed	Closed	-
Guargum Meal	40%	Closed	Closed	-
	50%	Closed	Closed	-

Guar Seed Weekly Average Prices:					
Commodity	District	Centre	Weekly Prices (Average) (Rs/Qtl)		Change
Guar Seed			17th April to 23rd April 2020	10th April to 16th April 2020	
Rajasthan	Jodhpur	Jodhpur (Loose)	Closed	Closed	-
		Jodhpur(Delivery)	Closed	Closed	-
	Sri-Ganganagar	Sri-Ganganagar(Loose)	Closed	Closed	-
		Sri-Ganganagar (Delivery)	Closed	Closed	-
		Rawla (Loose)	Closed	Closed	-
		Gharsana (Loose)	Closed	Closed	-
		Raisinghnagar (Loose)	Closed	Closed	-
	Bikaner	Bikaner (Loose)	Closed	Closed	-
		Bikaner (Delivery)	Closed	Closed	-
		Nokha(Loose)	Closed	Closed	-
		Nokha (Delivery)	Closed	Closed	-
		Khajuwala (Loose)	Closed	Closed	-
		Khajuwala (Delivery)	Closed	Closed	-
		Lunkaransar (Loose)	3483	Closed	-
	Hanumangarh	Hanumangarh (Loose)	Closed	Closed	-
		Hanumangarh (Delivery)	Closed	Closed	-
		Nohar (Loose)	Closed	Closed	-
		Pilibanga (Loose)	Closed	Closed	-
	Nagaur	Nagaur (Loose)	Closed	Closed	-

	Churu	Churu (Delivery)	Closed	Closed	-
	Alwar	Alwar (Loose)	Closed	Closed	-
Haryana	Hisar	Adampur (Loose)	Closed	Closed	-
		Adampur (Delivery)	Closed	Closed	-
	Bhiwani	Bhiwani (Delivery)	Closed	Closed	-
		Siwani (Loose)	Closed	Closed	-
	Sirsa	Sirsa (Loose)	Closed	Closed	-
		Dhabwali (Loose)	Closed	Closed	-
		Dhabwali (Delivery)	Closed	Closed	-
		Ellanabad (Loose)	Closed	Closed	-
	Fatehabad	Fatehabad (Loose)	Closed	Closed	-
Gujarat	Banaskantha	Deesa (Loose)	Closed	Closed	-
	Patan	Patan (Loose)	Closed	Closed	-
	Rajkot	Rajkot (Loose)	Closed	Closed	-
	Jamnagar	Dhrol (Loose)	Closed	Closed	-
Madhya Pradesh	Gwalior	Dabra (Loose)	Closed	Closed	-
Guar Gum					
Rajasthan	Jodhpur	Jodhpur	Closed	Closed	-
	Alwar	Alwar	Closed	Closed	-
	Hanumangarh	Nohar	Closed	Closed	-
Haryana	Bhiwani	Bhiwani	Closed	Closed	-
	Sirsa	Sirsa	Closed	Closed	-
		Dhabwali	Closed	Closed	-
		Ellanabad	Closed	Closed	-
	Fatehabad	Fatehabad	Closed	Closed	-

Week on Week Price: Scenario of Guarseed and Guargum:							
Commodity	District	Centre	Today	Week Ago	Month Ago	Year Ago	
Guar Seed			23-Apr-20	16-Apr-20	23-Mar-20	23-Apr-19	
Rajasthan	Jodhpur	Jodhpur (Loose)	Closed	Closed	Closed	4150	
		Jodhpur(Delivery)	Closed	Closed	Closed	4358	
	Sri-Ganganagar	Sri-Ganganagar(Loose)	NA	Closed	Closed	4150	
		Sri-Ganganagar (Delivery)	NA	Closed	Closed	4300	
		Rawla (Loose)	NR	-	-	4100	
		Gharsana (Loose)	NR	-	-	4060	
		Raisinghnagar (Loose)	NR	-	-	4150	
		Bikaner	Bikaner (Loose)	NA	NA	Closed	4080
			Bikaner (Delivery)	NA	NA	Closed	4284
	Nokha(Loose)		NA	NA	Closed	4100	
	Nokha (Delivery)		NA	NA	Closed	4305	
	Khajuwala (Loose)		NA	NA	Closed	4080	
	Khajuwala (Delivery)		NA	NA	Closed	4284	
	Lunkaransar (Loose)		3450	3550	Closed	4050	
	Hanumangarh	Hanumangarh (Loose)	NA	NA	Closed	4100	
		Hanumangarh (Delivery)	NA	NA	Closed	4305	
		Nohar (Loose)	NR	NR	NR	4100	
		Pilibanga (Loose)	Closed	Closed	Closed	0	
	Nagaur	Nagaur (Loose)	Closed	Closed	Closed	4050	
	Churu	Churu (Delivery)	NA	NA	NA	4150	
	Alwar	Alwar (Loose)	NA	NA	NA	3900	
Haryana	Hisar	Adampur (Loose)	Closed	Closed	Closed	4090	
		Adampur (Delivery)	Closed	Closed	Closed	4295	
	Bhiwani	Bhiwani (Delivery)	NA	Closed	NR	4250	
		Siwani (Loose)	Closed	Closed	3270	4235	
	Sirsa	Sirsa (Loose)	Closed	Closed	Closed	4100	
		Dhabwali (Loose)	Closed	Closed	Closed	-	
		Dhabwali (Delivery)	Closed	Closed	Closed	-	
		Ellanabad (Loose)	NR	NR	NR	-	
	Fatehabad	Fatehabad (Loose)	Closed	Closed	Closed	-	
Gujarat	Banaskantha	Deesa (Loose)	NA	NA	-	-	
	Patan	Patan (Loose)	NA	NA	-	-	
	Rajkot	Rajkot (Loose)	NA	NA	-	-	
	Jamnagar	Dhrol (Loose)	NA	NA	-	-	
M.P.	Gwalior	Dabra (Loose)	NA	NA	-	-	
Guar Gum							

Rajasthan	Jodhpur	Jodhpur	Closed	Closed	Closed	8800
	Alwar	Alwar	NA	NA	NA	8800
	Hanumangarh	Nohar	NR	NR	NR	9000
Haryana	Bhiwani	Bhiwani	NA	Closed	NR	8980
	Sirsa	Sirsa	Closed	Closed	Closed	8800
		Dhabwali	Closed	Closed	Closed	-
		Ellanabad	NR	NR	NR	-
	Fatehabad	Fatehabad	Closed	Closed	Closed	-

Guar Seed Arrivals at Key Spot Markets

[\(Back to Table of Contents\)](#)

Guar Cumulative Arrivals in Key Centers:					
Commodity	District	Centre	Weekly Arrivals (Quintals)		Change
Guar Seed			17th April to 23rd April 2020	10th April to 16th April 2020	
Rajasthan	Jodhpur	Jodhpur	Closed	Closed	-
	Sri-Ganganagar	Sri-Ganganagar	Closed	Closed	-
		Rawla	Closed	Closed	-
		Gharsana	Closed	Closed	-
		Raisinghnagar	Closed	Closed	-
	Bikaner	Bikaner	Closed	Closed	-
		Nokha	Closed	Closed	-
		Khajuwala	Closed	Closed	-
		Lunkaransar	660	Closed	-
	Hanumangarh	Hanumangarh	Closed	Closed	-
		Nohar	Closed	Closed	-
		Pilibanga	Closed	Closed	-
	Nagaur	Nagaur	Closed	Closed	-
	Churu	Churu	Closed	Closed	-
	Alwar	Alwar	Closed	Closed	-
Haryana	Hisar	Adampur	Closed	Closed	-
	Bhiwani	Bhiwani	Closed	Closed	-
		Siwani	Closed	Closed	-
	Sirsa	Sirsa	Closed	Closed	-
		Dhabwali	Closed	Closed	-
		Ellanabad	Closed	Closed	-
	Fatehabad	Fatehabad	Closed	Closed	-
Gujarat	Banaskantha	Deesa	Closed	Closed	-
	Patan	Patan	Closed	Closed	-



	Rajkot	Rajkot	Closed	Closed	-
	Jamnagar	Dhrol	Closed	Closed	-
Madhya Pradesh	Gwalior	Dabra	Closed	Closed	-
Total Arrivals/Above Markets			660	-	-

Disclaimer

The information and opinions contained in the document have been compiled from sources believed to be reliable. The company does not warrant its accuracy, completeness and correctness. Use of data and information contained in this report is at your own risk. This document is not, and should not be construed as, an offer to sell or solicitation to buy any commodities. This document may not be reproduced, distributed or published, in whole or in part, by any recipient hereof for any purpose without prior permission from the Company. IASL and its affiliates and/or their officers, directors and employees may have positions in any commodities mentioned in this document (or in any related investment) and may from time to time add to or dispose of any such commodities (or investment). Please see the detailed disclaimer at <http://www.agriwatch.com/disclaimer.php> © 2019 Indian Agribusiness Systems Ltd.