



Guar Weekly Research Report

Table of Contents

- ❖ **Executive Summary**
- ❖ **Outlook**
- ❖ **Domestic Market Fundamentals**
- ❖ **Processing Margins**
- ❖ **Guar Seed to Gum Ratio**
- ❖ **Guar Gum Weekly Exports**
- ❖ **Technical Analysis (Guar Seed)**
- ❖ **Technical Analysis (Guar Gum)**
- ❖ **Guar Seed & Gum Prices at Key Spot Markets**
- ❖ **Guar Seed Arrivals at Key Centers**



Executive Summary

Domestic Guar Seed Market Summary

This week Guar seed prices at Jodhpur continued to show firmness, tracking the good rally in crude oil prices and decrease in arrivals. Guar gum prices too remained firm on good export demand and good rally in crude oil prices due to supply concerns.

Increase in Guar gum exports in Dec'21 is underpinning guar prices. In upcoming months too, guar exports likely to remain firm.

Outlook – Guar seed (Spot, Jodhpur basis):

Guar seed delivery prices are expected to trade range bound with firm bias supported by good export demand and firm crude oil prices. The seed prices are likely to trade in the range between 6,200 –6,500/Qtl. in the short-run.

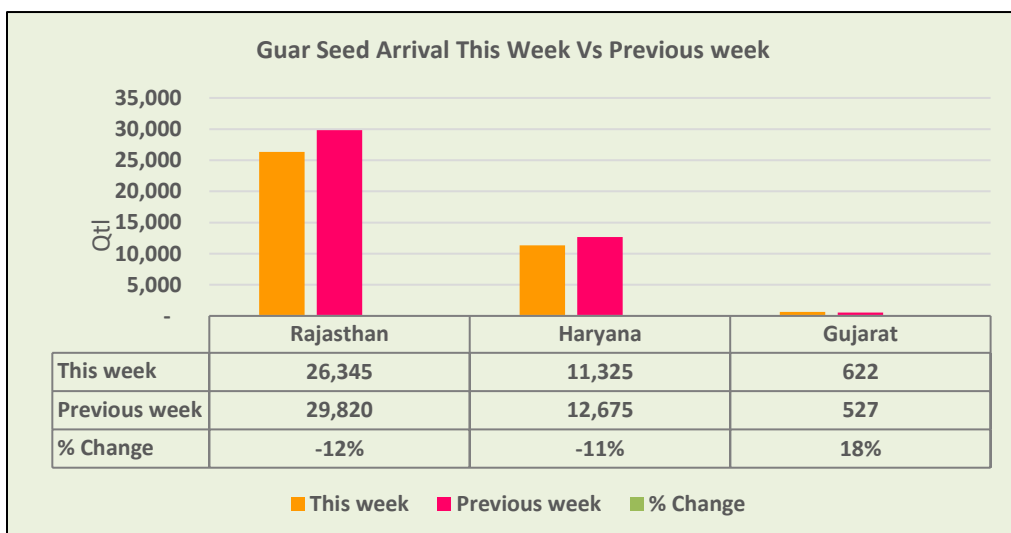
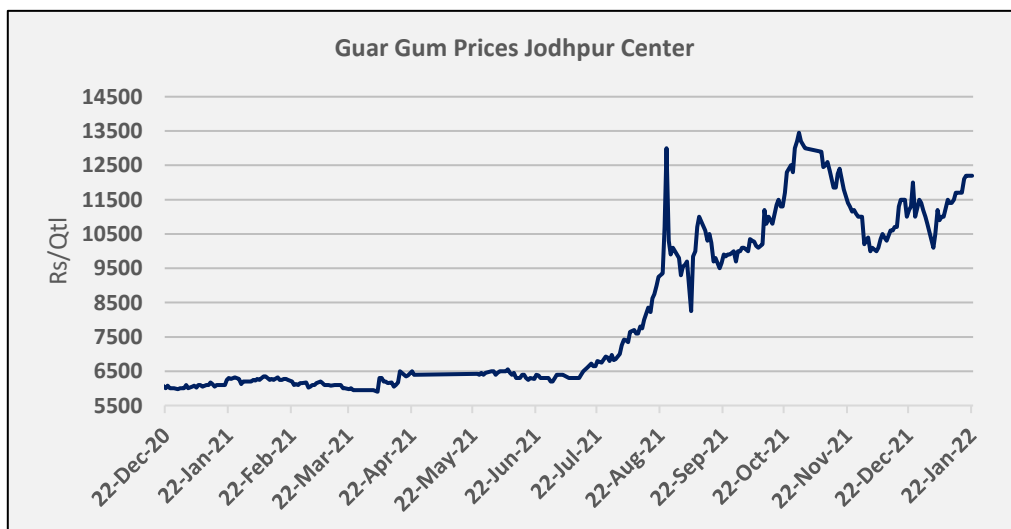
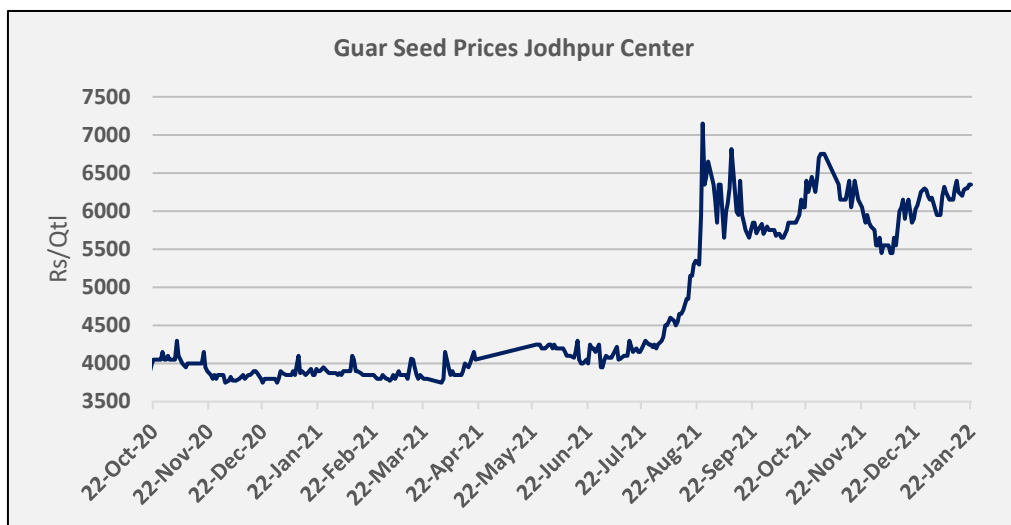
Domestic Market Fundamentals

Jodhpur Guar seed delivery weekly average price remained firm this week on the back of firmness in crude oil prices. Overall arrivals went down in Rajasthan and Haryana.

The average weekly prices of Jodhpur Guar seed delivery continued the firm tone this week too and increased by 1% to Rs. 6,453 a quintal, compared to Rs.6,388 a week ago. The market made a low of 6,353 and high of 6,510 during the week. Prices went up on tracking firmness in crude prices this week which was up by 1.15%. Crude oil currently hovering above \$84/ barrel and trading near seven year high on supply concerns.

The average weekly prices of Jodhpur Guar gum too continued rally and increased by 4.9% to Rs. 12,100 a quintal, compared to Rs.11,533 a week ago. The market made a low of 11,700 and high of 12,200 during the week.

In the week ended 22nd of January, overall Guar seed arrivals went down by 11% as compared to previous week and arrivals went down by 12% in Rajasthan, in Haryana down by 11% and in Gujarat up by 18% as compared to previous week.



As on 21st Jan'2021, as per data released by Baker Hughes, the number of oilrigs in USA went down by 1 to 491 compared to 492 previous week. Monthly oilrig count in Dec'21 stood at 474 vs 259 last year same period. High crude prices will lead to US drilling and exporting more oil, which should help India's exports of guar products.

India's guar gum exports increased in the month of December 2021 by 44.70% to 25,274 tonnes compared to 17,466 tonnes during previous month at an average FoB of US \$ 2466 per tonne in the month of Dec'2021 as compared to US \$ 2169 per tonne previous month. Further, the gum shipments were up by 43.24% in Dec'2021 compared to the same period last year. Of the total exported quantity, around 7,671 tonnes bought by US, Russia bought 6,964 tonnes, Germany 3,092 tonnes, china 1,036 tonnes, Australia 835 tonnes and Canada 687 tonnes. YoY good export demand has underpinned the guar prices triggered by good rally in crude oil prices and weak USD/INR. In upcoming months too guar gum exports likely to remain good.

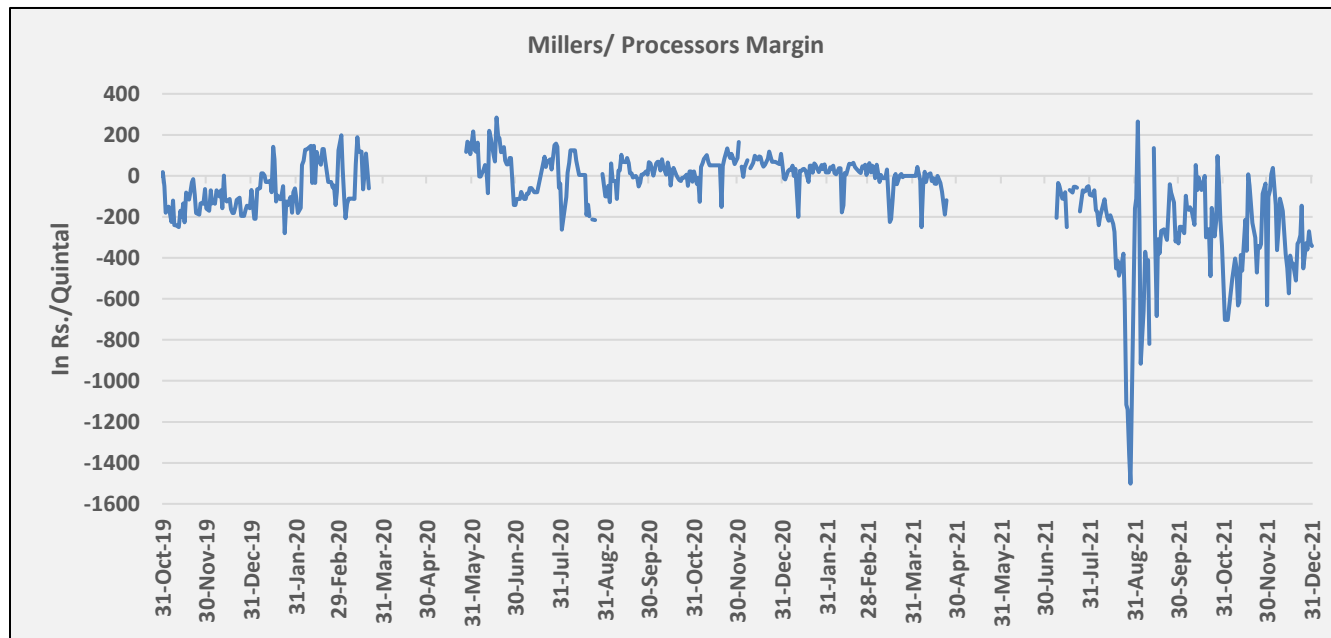
Additionally, India's guar split exports too increased in the month of Dec'2021 by 24.73% to 3,268 tonnes compared to 2,620 tonnes previous month at an average FoB of US \$ 1,639 per tonne in the month of Dec'21 compared to \$ 1,557 per tonne previous month. However, the guar split shipments went up by 16.71 % in Dec'21 2021 compared to the same period last year. Of the total exported quantity, around 1,360 tonnes bought by China, US 960 tonnes, Mexico 528 tonnes and Switzerland 240 tonnes.

According to Rajasthan govt's 2021-22 first advance estimates, Guar seed production is pegged at 13.73 lakh tonnes vs 11.36 lakh tonne last year based on acreage at 21.13 lakh hectare as compared to 24.84 lakh hectare last year And higher yield at 650 kg/Ha vs 458 kg/Ha last year.

According to Agriwatch estimates, 2021 Guar seed production is estimated at 4.5 lakh tonnes lower than previous year at 5.83 lakh tonnes.

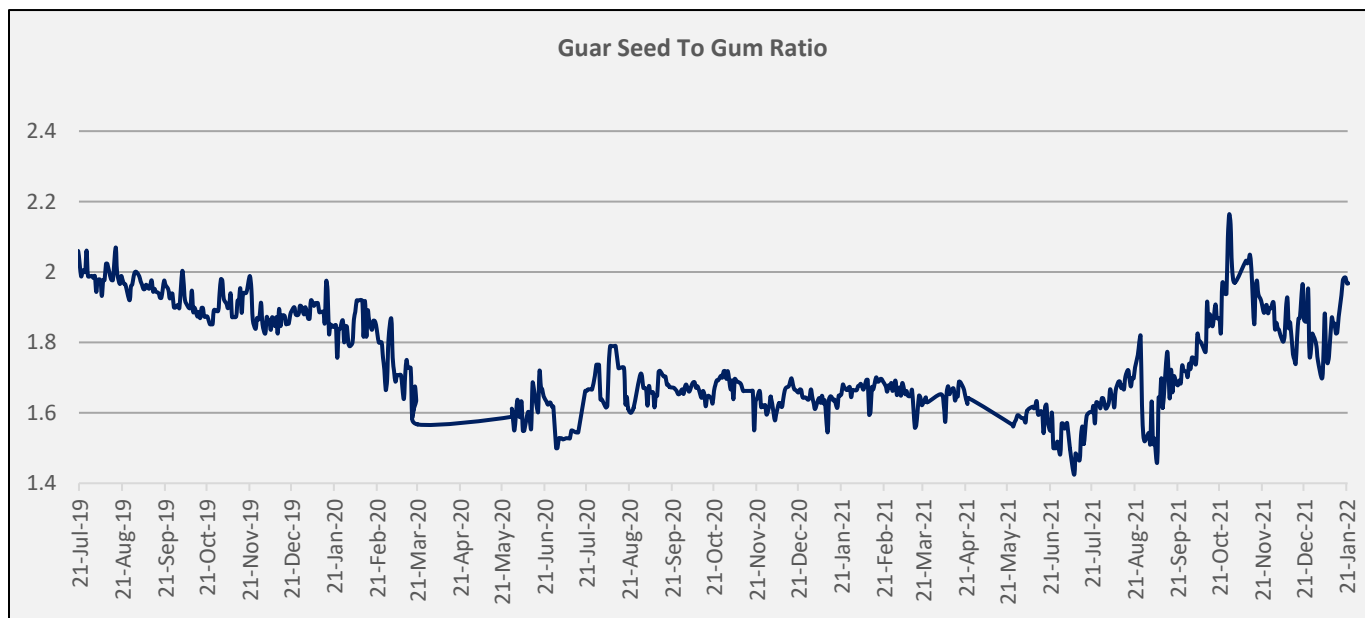
Millers/Processors Margin

As seen in the chart, the average crush margin of guar seed has decreased in December'21 as compared to November'21, the average crush margin decreased to Rs. -283/quintal in Dec'21 compared to Rs. -114/quintal in Nov'21. Decrease in the guar product prices like churi and korma have pushed down the processors' margin.



Guar Seed to Gum Ratio

The average weekly Ratio of guar seed to gum stood at 1.97 as compared to last week 1.86. Overall, good demand of gum from domestic markets has pushed overall ratio on higher side this week.



Guar Gum Weekly Export

Week On Week Exports	Quantity in MT	Average FoB (\$/T)
01-08 December-2021	6387	2219
9-15 December-2021	6145	2691
16-22 December-2021	5558	2800
23-31 December-2021	7183	2152
Total	25274	2466

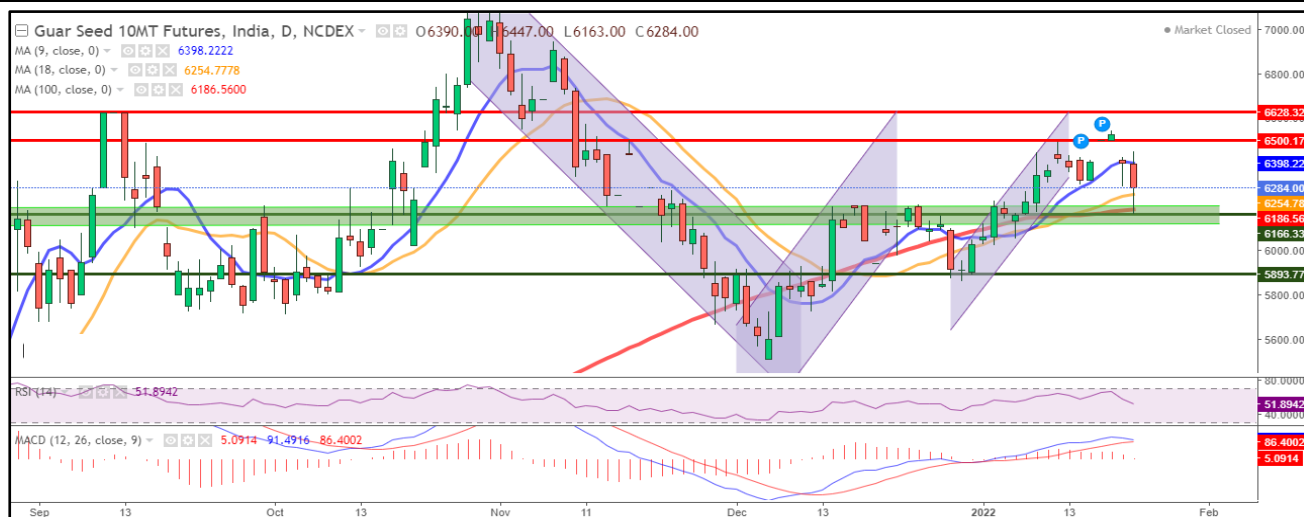
Source: Trade

Technical Analysis (Guar Seed)

Commodity: Guar Seed
Contract: February

Exchange: NCDEX
Expiry: February 20, 2021

Guar Seed (Feb, Daily Chart)



Technical Commentary:

- This week, Guar seed posted 1.24% loss on profit booking on Friday, closed at 6284.
- Prices closed between 9 and 18 DMA, indicating steady tone in near-term, 100DMA emerged as good support.
- MACD cross over indicating steady tone in near term.
- RSI is 51, indicating good buying strength.

Weekly Supports & Resistances			S1	S2	PCP	R1	R2
Guar Seed	NCDEX	Feb	6100	6000	6284	6600	6700
			Call	Entry	T1	T2	SL
Guar Seed	NCDEX	Feb	BUY	Above 6250	6400	6500	6150



Technical Analysis (Guar Gum)

Commodity: Guar Gum
Contract: February

Exchange: NCDEX
Expiry: February 20, 2021

Guar Gum (Feb, Daily Chart)



Technical Commentary:

- Guar gum posted 0.52% gain on buyers interest and closed at 11736.
- Prices closed above 9 and 18 DMA, indicating firm tone in near-term.
- MACD cross over indicating firm tone in near term.
- RSI at 58 indicating good buying strength.

Weekly Supports & Resistances			S1	S2	PCP	R1	R2
Guar Gum	NCDEX	Feb	11400	11000	11736	12000	12500
Weekly Trade Call			Call	Entry	T1	T2	SL
Guar Gum	NCDEX	Feb	BUY	Near 11600	11800	11900	11450

Guar by – Products Weekly Average Prices:				
Commodity	Centre	17th Jan to 22nd Jan 2022	10th Jan to 15th Jan 2022	Change
Churi	Jodhpur	2300	2300	Unch
Korma	Jodhpur	3500	3500	Unch
Churi	Sri-Ganganagar	2475	2475	Unch
Korma	Sri-Ganganagar	3600	3600	Unch
Prices in Rs/75 kg				

Guar Export Weekly Average Prices:				
Commodity	Variety	17th Jan to 22nd Jan 2022	10th Jan to 15th Jan 2022	Change
Guargum Split		-	-	-
Guargum Powder	200 Mesh 5000 CPS	-	-	-
	200 Mesh 3500 CPS	-	-	-
Guargum Meal	40%	-	-	-
	50%	-	-	-
Prices in \$/MT				

Guar Seed Weekly Average Prices:					
Commodity	District	Centre	Weekly Prices (Average) (Rs/Qtl)		Change
Guar Seed			17th Jan to 22nd Jan 2022	10th Jan to 15th Jan 2022	
Rajasthan	Jodhpur	Jodhpur (Loose)	6146	6083	63
		Jodhpur(Delivery)	6453	6388	66
	Sri-Ganganagar	Sri-Ganganagar(Loose)	5992	5960	32
		Sri-Ganganagar (Delivery)	6142	6110	32
		Rawla (Loose)	6083	6131	-48
		Gharsana (Loose)	6150	6120	30
		Raisinghnagar (Loose)	6254	6220	34
	Bikaner	Bikaner (Loose)	6162	6173	-12
		Bikaner (Delivery)	6470	6482	-12
		Nokha(Loose)	6133	6113	21
		Nokha (Delivery)	6440	6418	22
		Khajuwala (Loose)	6250	6220	30

		Khajuwala (Delivery)	6563	6531	32
		Lunkaransar (Loose)	6175	6092	83
	Hanumangarh	Hanumangarh (Loose)	5928	5880	48
		Hanumangarh (Delivery)	6225	6174	51
		Nohar (Loose)	6110	6053	58
		Pilibanga (Loose)	5922	5946	-24
	Nagaur	Nagaur (Loose)	6175	5990	185
	Churu	Churu (Delivery)	-	5980	-
	Alwar	Alwar (Loose)	5558	5520	38
Haryana	Hisar	Adampur (Loose)	6050	5958	92
		Adampur (Delivery)	6353	6256	96
	Bhiwani	Bhiwani (Delivery)	-	-	-
		Siwani (Loose)	6167	6200	-33
	Sirsa	Sirsa (Loose)	6003	5905	98
		Dhabwali (Loose)	6007	5910	97
		Dhabwali (Delivery)	6307	6206	102
		Ellanabad (Loose)	6132	5952	180
	Fatehabad	Fatehabad (Loose)	5642	5550	92
Gujarat	Banaskantha	Deesa (Loose)	-	-	-
	Patan	Patan (Loose)	5797	5714	83
	Rajkot	Rajkot (Loose)	5947	5842	105
	Jamnagar	Dhrol (Loose)	-	-	-
Madhya Pradesh	Gwalior	Dabra (Loose)	-	-	-
Guar Gum					
Rajasthan	Jodhpur	Jodhpur	12100	11533	567
	Alwar	Alwar	-	-	-
	Hanumangarh	Nohar	-	-	-
Haryana	Bhiwani	Bhiwani	-	-	-
	Sirsa	Sirsa	12117	11717	400
		Dhabwali	-	-	-
		Ellanabad	-	-	-
	Fatehabad	Fatehabad	12125	11675	450

Guar Cumulative Arrivals in Key Centers:

Commodity	District	Centre	Weekly Arrivals (Quintals)		Change
Guar Seed			17th Jan to 22nd Jan 2022	10th Jan to 15th Jan 2022	
Rajasthan	Jodhpur	Jodhpur	420	420	Unch

	Sri-Ganganagar	Sri-Ganganagar	4100	4300	-200
		Rawla	490	400	90
		Gharsana	530	480	50
		Raisinghnagar	360	440	-80
	Bikaner	Bikaner	4800	6600	-1800
		Nokha	3550	3600	-50
		Khajuwala	1450	1100	350
		Lunkaransar	3500	6000	-2500
	Hanumangarh	Hanumangarh	650	350	300
		Nohar	2385	2565	-180
		Pilibanga	615	330	285
	Nagaur	Nagaur	2800	2550	250
	Churu	Churu	520	550	-30
	Alwar	Alwar	175	135	40
Haryana	Hisar	Adampur	4000	3600	400
	Bhiwani	Bhiwani	-	-	-
		Siwani	730	1050	-320
	Sirsa	Sirsa	3600	6200	-2600
		Dhabwali	1335	660	675
		Ellanabad	1360	715	645
	Fatehabad	Fatehabad	300	450	-150
Gujarat	Banaskantha	Deesa	-	-	-
	Patan	Patan	63	117	-54
	Rajkot	Rajkot	559	410	149
	Jamnagar	Dhrol	-	-	-
Madhya Pradesh	Gwalior	Dabra	-	-	-
Total Arrivals/Above Markets			38292	43022	-4730

Week on Week Price: Scenario of Guarseed and Guargum:						
Commodity	District	Centre	Today	Week Ago	Month Ago	Year Ago
Guar Seed			19-Jan-22	12-Jan-22	21-Dec-21	20-Jan-21
Rajasthan	Jodhpur	Jodhpur (Loose)	6150	6000	5750	3700
		Jodhpur(Delivery)	6458	6300	6038	3885
	Sri-Ganganagar	Sri-Ganganagar(Loose)	6000	6000	5850	3670
		Sri-Ganganagar (Delivery)	6150	6150	6000	3820

		Rawla (Loose)	5900	6150	5800	-
		Gharsana (Loose)	6000	6200	6100	3650
		Raisinghnagar (Loose)	6300	6200	5900	3650
	Bikaner	Bikaner (Loose)	6170	6150	5900	3770
		Bikaner (Delivery)	6479	6458	6195	3959
		Nokha(Loose)	6150	6150	5800	3800
		Nokha (Delivery)	6458	6458	6090	3990
		Khajuwala (Loose)	6300	Closed	5900	3780
		Khajuwala (Delivery)	6615	Closed	6195	3969
		Lunkaransar (Loose)	6200	6150	5900	3700
	Hanumangarh	Hanumangarh (Loose)	6000	5800	5800	3625
		Hanumangarh (Delivery)	6300	6090	6090	3806
		Nohar (Loose)	6030	6090	-	-
		Pilibanga (Loose)	5970	6050	5800	-
	Nagaur	Nagaur (Loose)	6200	6100	5825	3625
	Churu	Churu (Delivery)	5600	6100	5375	-
	Alwar	Alwar (Loose)	5400	5550	4550	-
Haryana	Hisar	Adampur (Loose)	6000	6000	5700	3700
		Adampur (Delivery)	6300	6300	5985	3885
	Bhiwani	Bhiwani (Delivery)	-	-	-	3900
		Siwani (Loose)	6200	6250	5900	3870
	Sirsa	Sirsa (Loose)	6080	5910	5715	3650
		Dhabwali (Loose)	6080	5940	-	3675
		Dhabwali (Delivery)	6384	6237	-	3859
		Ellanabad (Loose)	6200	5750	-	0
	Fatehabad	Fatehabad (Loose)	5650	5600	5250	3550
Gujarat	Banaskantha	Deesa (Loose)	-	-	-	-
	Patan	Patan (Loose)	5750	5700	5505	3765
	Rajkot	Rajkot (Loose)	6000	5925	5675	3670
	Jamnagar	Dhrol (Loose)	-	-	-	-
Madhya Pradesh	Gwalior	Dabra (Loose)	-	-	-	-
Guar Gum						
Rajasthan	Jodhpur	Jodhpur	12200	11400	11000	6100
	Alwar	Alwar	-	-	-	-
	Hanumangarh	Nohar	-	-	-	-
Haryana	Bhiwani	Bhiwani	-	-	-	6100



	Sirsa	Sirsa	12200	11800	11200	6100
		Dhabwali	-	-	-	6150
		Ellanabad	-	-	-	-
	Fatehabad	Fatehabad	12200	11800	11100	6050

Disclaimer

The information and opinions contained in the document have been compiled from sources believed to be reliable. The company does not warrant its accuracy, completeness and correctness. Use of data and information contained in this report is at your own risk. This document is not, and should not be construed as, an offer to sell or solicitation to buy any commodities. This document may not be reproduced, distributed or published, in whole or in part, by any recipient hereof for any purpose without prior permission from the Company. IASL and its affiliates and/or their officers, directors and employees may have positions in any commodities mentioned in this document (or in any related investment) and may from time to time add to or dispose of any such commodities (or investment). Please see the detailed disclaimer at <http://www.agriwatch.com/disclaimer.php> © 2021 Indian Agribusiness Systems Ltd.