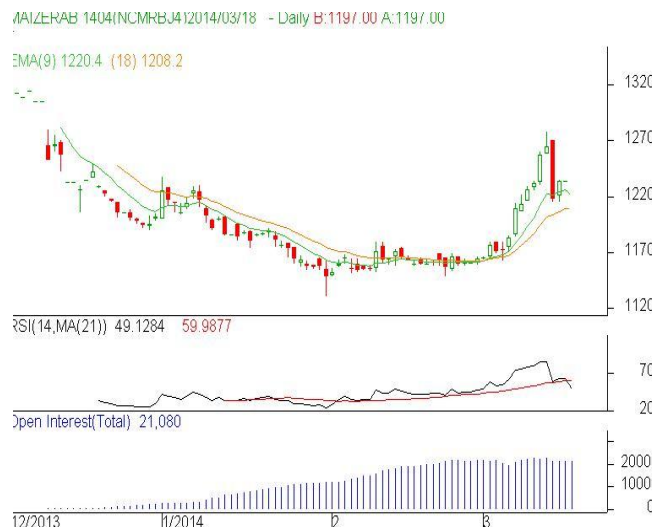


**Commodity: Maize**  
**Contract: Mar**
**Exchange: NCDEX**  
**Expiry: Mar 20th, 2014**
**Maize – Technical Outlook**
**Technical Commentary:**

- Candlestick chart pattern reflects indecision in the market.
- Prices closed above 9-day and 18-day EMA, indicating firm tone in near-term and medium-term.
- RSI and stochastic are heading upwards in neutral zone.

***Maize prices are likely to ease in Tuesday's session.***


**Strategy: Sell**

Intraday Supports & Resistances			S1	S2	PCP	R1	R2
Maize	NCDEX	Mar	1212	1200	1234	1242	1249
Intraday Trade Call			Call	Entry	T1	T2	SL
Maize	NCDEX	Mar	<b>Sell</b>	Below 1230	1220	1215	1236

\* Do not carry-forward the position next day.

**Disclaimer**

The information and opinions contained in the document have been compiled from sources believed to be reliable. The company does not warrant its accuracy, completeness and correctness. Use of data and information contained in this report is at your own risk. This document is not, and should not be construed as, an offer to sell or solicitation to buy any commodities. This document may not be reproduced, distributed or published, in whole or in part, by any recipient hereof for any purpose without prior permission from the Company. IASL and its affiliates and/or their officers, directors and employees may have positions in any commodities mentioned in this document (or in any related investment) and may from time to time add to or dispose of any such commodities (or investment). Please see the detailed disclaimer at <http://www.agriwatch.com/Disclaimer.asp>  
 © 2014 Indian Agribusiness Systems Pvt Ltd.