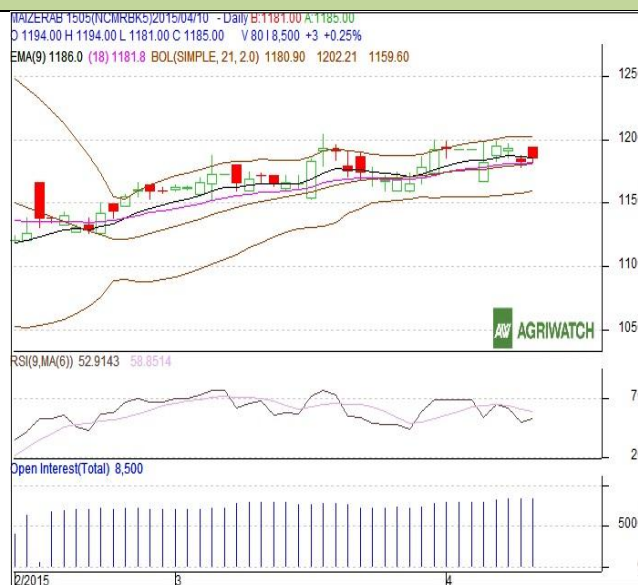


**Commodity: Maize**  
**Contract: May**
**Exchange: NCDEX**  
**Expiry: May 20<sup>th</sup>, 2015**
**Maize – Technical Outlook**
**Technical Commentary:**

- Candlestick chart pattern reveals down in the market.
- RSI is moving down in neutral zone.
- Prices closed between 9 and 18 days EMAs.
- Decrease in prices with higher volume and OI indicates to short build up.

**Maize prices are likely to trade down on Friday's session.**


**Strategy: Sell**

Intraday Supports & Resistances			S2	S1	PCP	R1	R2
Maize	NCDEX	May	1171	1176	1182	1204	1210
Intraday Trade Call			Call	Entry	T1	T2	SL
Maize	NCDEX	May	<b>Sell</b>	1194	1184	1179	1200

\* Do not carry-forward the position next day.

**Disclaimer**

The information and opinions contained in the document have been compiled from sources believed to be reliable. The company does not warrant its accuracy, completeness and correctness. Use of data and information contained in this report is at your own risk. This document is not, and should not be construed as, an offer to sell or solicitation to buy any commodities. This document may not be reproduced, distributed or published, in whole or in part, by any recipient hereof for any purpose without prior permission from the Company. IASL and its affiliates and/or their officers, directors and employees may have positions in any commodities mentioned in this document (or in any related investment) and may from time to time add to or dispose of any such commodities (or investment). Please see the detailed disclaimer at <http://www.agriwatch.com/Disclaimer.asp>  
 © 2015 Indian Agribusiness Systems Pvt. Ltd.