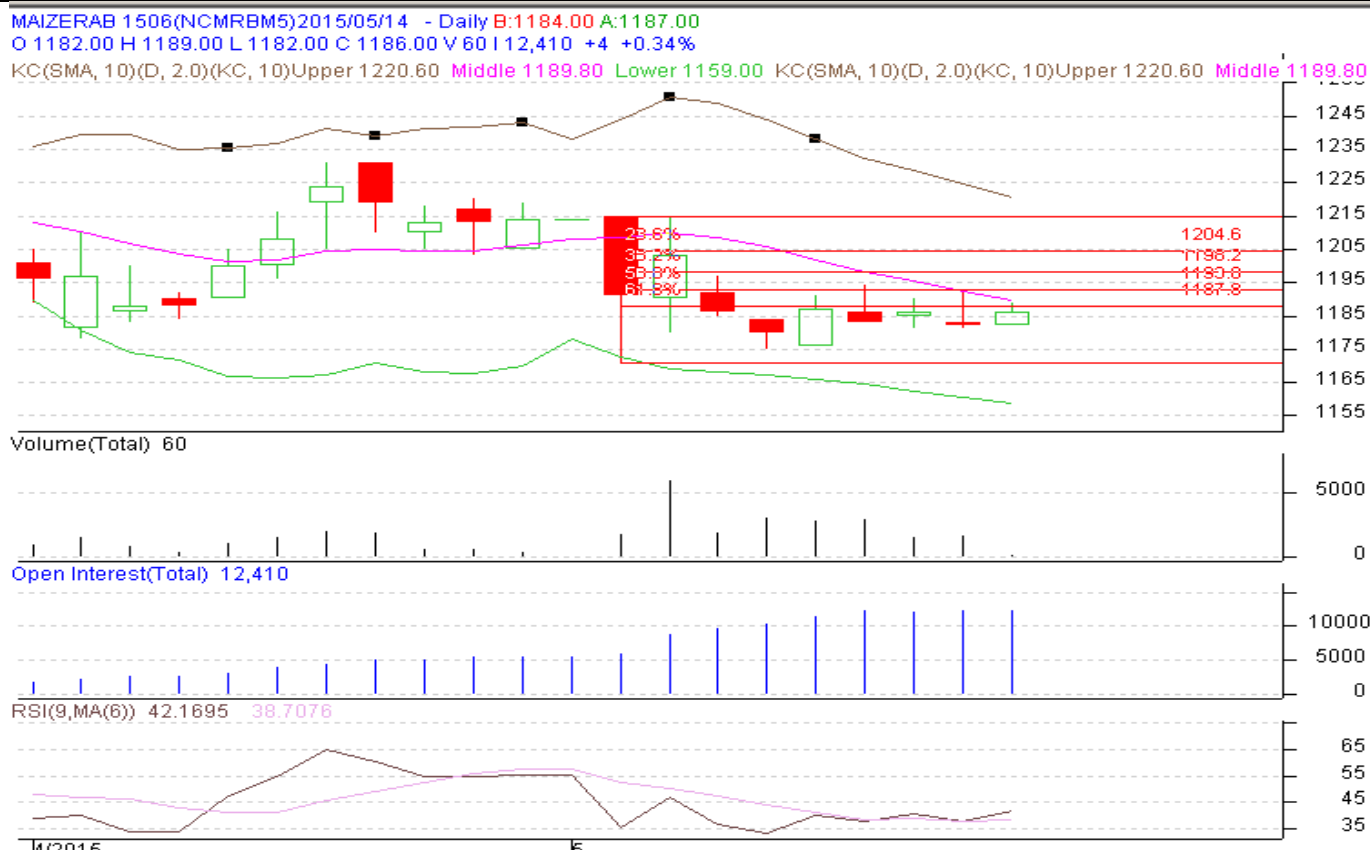


Contract: June- Expiry: June-20, 2015

Maize



Technical Commentary:

- Fall in price with fall in OI, depicts short up in the market.
- Candlesticks are showing downward movement in the market.
- RSI is moving in the neutral region.

Strategy: Buy

Intraday Supports & Resistances			S2	S1	PCP	R1	R2
Maize	NCDEX	June	1000	1150	1182	1210	1215
Intraday Trade Call*			Call	Entry	T1	T2	SL
Maize	NCDEX	June	Buy	1180	1185	1188	1177

*Do not carry forward the position until the next day.



The information and opinions contained in the document have been compiled from sources believed to be reliable. The company does not warrant its accuracy, completeness and correctness. Use of data and information contained in this report is at your own risk. This document is not, and should not be construed as, an offer to sell or solicitation to buy any commodities. This document may not be reproduced, distributed or published, in whole or in part, by any recipient hereof for any purpose without prior permission from the Company. IASL and its affiliates and/or their officers, directors and employees may have positions in any commodities mentioned in this document (or in any related investment) and may from time to time add to or dispose of any such commodities (or investment). Please see the detailed disclaimer at <http://www.agriwatch.com/Disclaimer.php> © 2015 Indian Agribusiness Systems Pvt Ltd.