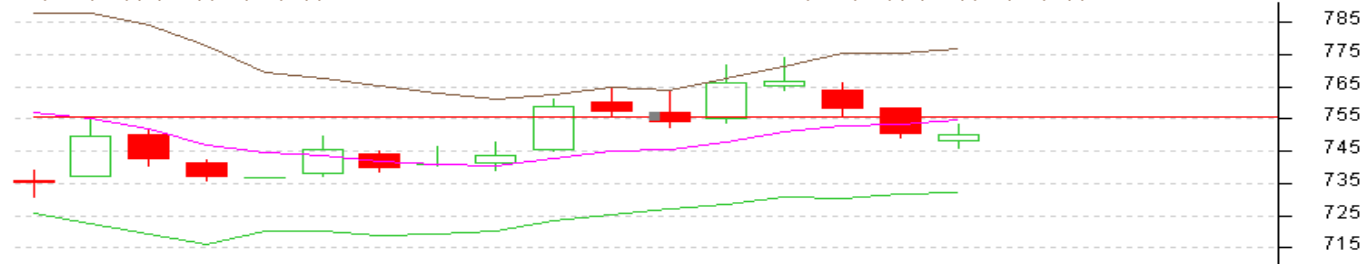


Contract: Feb- Expiry: Feb 27, 2015
Mentha Oil

 MENTHAOIL 1502(MXMTLG5)2015/02/11 - Daily B:750.30 A:751.00
 O 747.60 H 753.50 L 745.30 C 750.30 V 1,414 T 364,889 I 8,982 +0.2 +0.03%

KC(SMA, 10)(D, 2.0)(KC, 10)Upper 776.760 Middle 754.580 Lower 732.400 KC(SMA, 10)(D, 2.0)(KC, 10)Upper 776.760 Middle 754.580



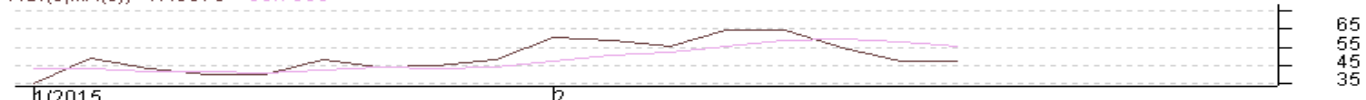
Volume(Total) 1,414



Open Interest(Total) 8,982



RSI(9,MA(6)) 47.6379 55.7639


Technical Commentary:

- Fall in price with fall in OI, depicts long liquidation.
- Oscillator RSI is in neutral zone.
- Candlesticks are showing downward movement in the market.

Strategy: Sell

Intraday Supports & Resistances			S2	S1	PCP	R1	R2
Mentha Oil	MCX	Feb	730	740	750.1	765	775
Intraday Trade Call*			Call	Entry	T1	T2	SL
Mentha Oil	MCX	Feb	Sell	755	749	747	757

*Do not carry forward the position until the next day.

Disclaimer

The information and opinions contained in the document have been compiled from sources believed to be reliable. The company does not warrant its accuracy, completeness and correctness. Use of data and information contained in this report is at your own risk. This document is not, and should not be construed as, an offer to sell or solicitation to buy any commodities. This document may not be reproduced, distributed or published, in whole or in part, by any recipient hereof for any purpose without prior permission from the Company. IASL and its affiliates and/or their officers, directors and employees may have positions in any commodities mentioned in this document (or in any related investment) and may from time to time add to or dispose of any such commodities (or investment). Please see the detailed disclaimer at <http://www.agriwatch.com/Disclaimer.php> © 2015 Indian Agribusiness Systems Pvt Ltd.