

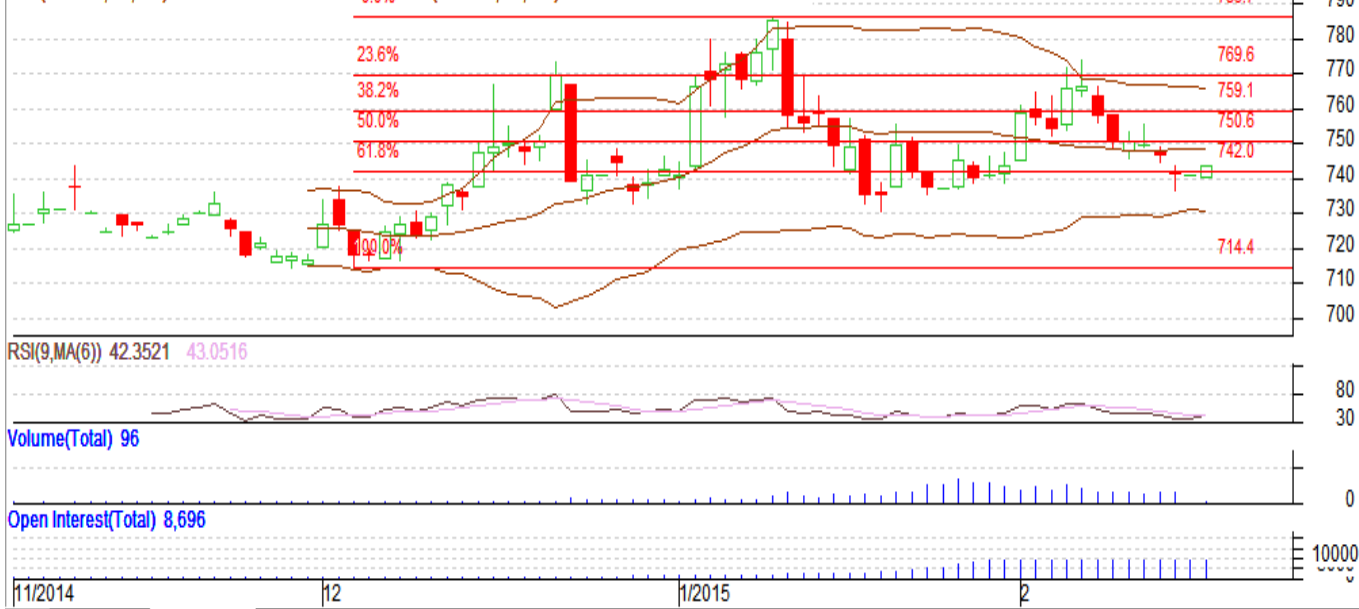
Contract: Feb- Expiry: Feb 27, 2015

### Mentha Oil

MENTHAOIL 1502(MXMTLG5)2015/02/18 - Daily B:742.60 A:743.50

O 740.10 H 743.70 L 740.10 C 743.50 V 96 T 21,381 I 8,696 +2.3 +0.31%

BOL(SIMPLE, 20, 2.0) 748.475 766.079 730.871 BOL(SIMPLE, 20, 2.0) 748.475 766.079 730.871



### Technical Commentary:

- Fall in price with fall in OI, depicts long liquidation.
- Oscillator RSI is in neutral zone.
- Candlesticks are showing downward movement in the market.

### Strategy: Buy

Intraday Supports & Resistances			S2	S1	PCP	R1	R2
Mentha Oil	MCX	Feb	720	730	741.2	750	760
Intraday Trade Call*			Call	Entry	T1	T2	SL
Mentha Oil	MCX	Feb	Buy	740	743	744.5	738.5

\*Do not carry forward the position until the next day.

### Disclaimer

The information and opinions contained in the document have been compiled from sources believed to be reliable. The company does not warrant its accuracy, completeness and correctness. Use of data and information contained in this report is at your own risk. This document is not, and should not be construed as, an offer to sell or solicitation to buy any commodities. This document may not be reproduced, distributed or published, in whole or in part, by any recipient hereof for any purpose without prior permission from the Company. IASL and its affiliates and/or their officers, directors and employees may have positions in any commodities mentioned in this document (or in any related investment) and may from time to time add to or dispose of any such commodities (or investment). Please see the detailed disclaimer at <http://www.agriwatch.com/Disclaimer.php> © 2015 Indian Agribusiness Systems Pvt Ltd.