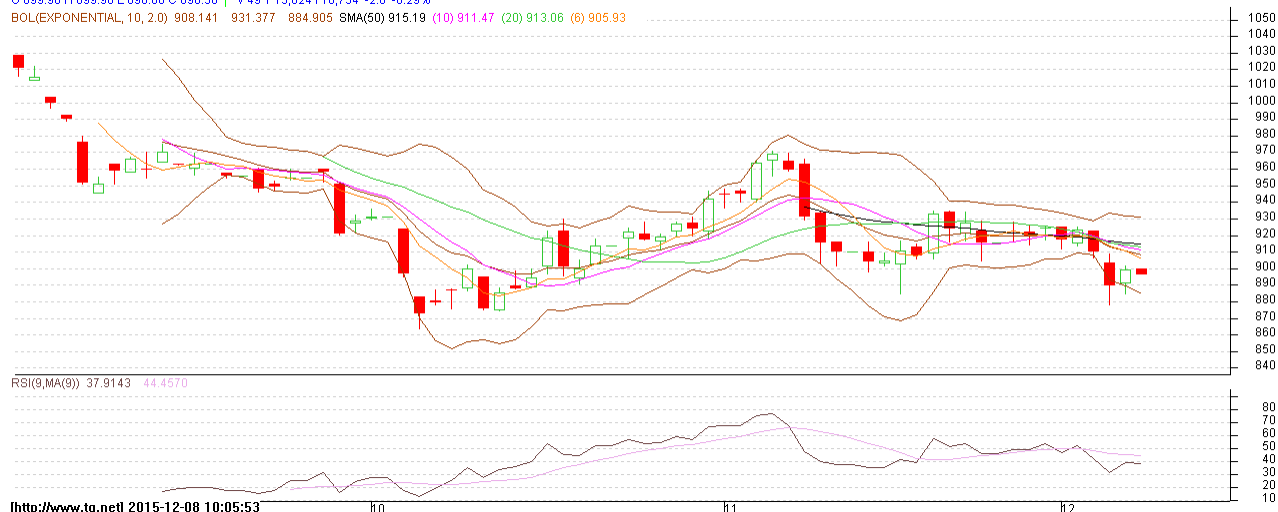


**Commodity: Mentha**  
**Contract: December**
**Exchange: MCX**  
**Expiry: 30<sup>th</sup> Dec, 2015**
**Mentha Oil**

 MENTHAOIL 1512(MCMTLZ5)2015/12/08 - Daily B 896.50 A 896.90  
 O 899.90 H 899.90 L 896.00 C 896.50 ↑ V 49 T 15,824 I 10,734 -2.6 -0.29%

BOL(EXPONENTIAL, 10, 2.0) 908.141 931.377 884.905 SMA(50) 915.19 (10) 911.47 (20) 913.06 (6) 905.93


<http://www.tq.net/> 2015-12-08 10:05:53

**Technical Analysis:**

- Mentha oil market trend is moving in a downtrend at the moment.
- RSI is moving near to neutral region.
- Last candlestick depicts indecision

**Strategy: Wait**

Intraday Supports & Resistances			S2	S1	PCP	R1	R2
Mentha	MCX	Dec	847.2	871	910.20	959	979.4
Pre-Market Intraday Trade Call*			Call	Entry	T1	T2	SL
Mentha	MCX	Dec	Wait	-	-	-	-

\*Do not carry forward the position until the next day.

**Disclaimer**

The information and opinions contained in the document have been compiled from sources believed to be reliable. The company does not warrant its accuracy, completeness and correctness. Use of data and information contained in this report is at your own risk. This document is not, and should not be construed as, an offer to sell or solicitation to buy any commodities. This document may not be reproduced, distributed or published, in whole or in part, by any recipient here of for any purpose without prior permission from the Company. IASL and its affiliates and/or their officers, directors and employees may have positions in any commodities mentioned in this document (or in any related investment) and may from time to time add to or dispose of any such commodities (or investment). Please see the detailed disclaimer at <http://www.agriwatch.com/Disclaimer.php> © 2015 Indian Agribusiness Systems Pvt Ltd.