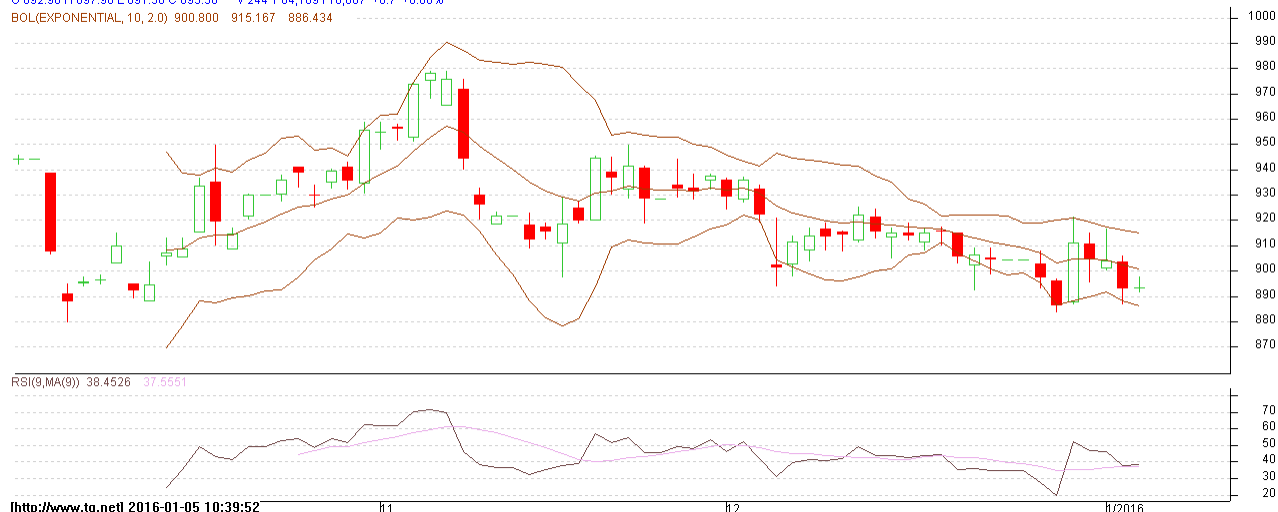


Commodity: Mentha
Contract: January
Exchange: MCX
Expiry: 31th Jan, 2016
Mentha Oil

MENTHAOIL 1601(MXMTLF6)2016/01/05 - Daily B:893.50 A:894.70
O:892.90 H:897.90 L:891.50 C:893.50 V:244 T:64,109 I:10,087 +0.7 +0.08%
BOL(EXPONENTIAL, 10, 2.0) 900.800 915.167 886.434


Technical Analysis:

- Mentha oil prices are moving in a downward trend.
- RSI is moving near to neutral region.
- Last candlestick depicts bearishness.

Strategy: Sell

Intraday Supports & Resistances			S2	S1	PCP	R1	R2
Mentha	MCX	Jan	847.2	871	892.8	932	943
Pre-Market Intraday Trade Call*			Call	Entry	T1	T2	SL
Mentha	MCX	Jan	Sell	Below 895	885	880	901

*Do not carry forward the position until the next day.

Disclaimer

The information and opinions contained in the document have been compiled from sources believed to be reliable. The company does not warrant its accuracy, completeness and correctness. Use of data and information contained in this report is at your own risk. This document is not, and should not be construed as, an offer to sell or solicitation to buy any commodities. This document may not be reproduced, distributed or published, in whole or in part, by any recipient here of for any purpose without prior permission from the Company. IASL and its affiliates and/or their officers, directors and employees may have positions in any commodities mentioned in this document (or in any related investment) and may from time to time add to or dispose of any such commodities (or investment). Please see the detailed disclaimer at <http://www.agriwatch.com/Disclaimer.php> © 2015 Indian Agribusiness Systems Pvt Ltd.