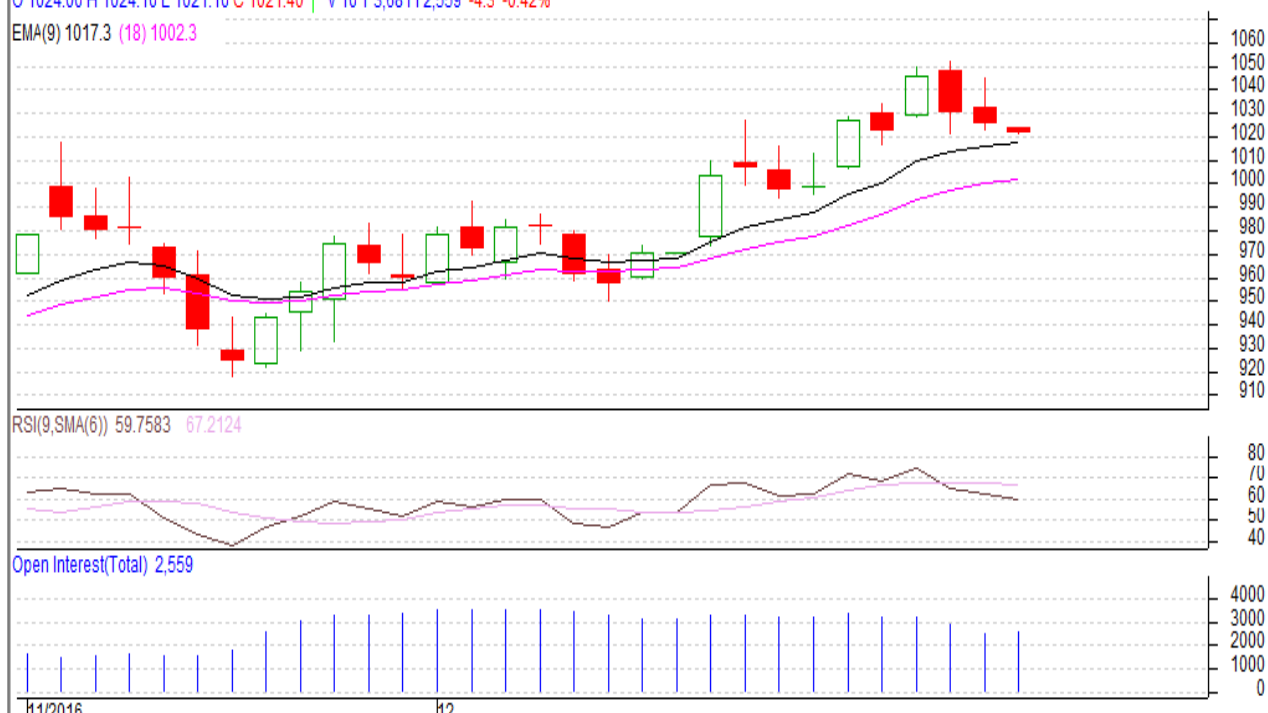


Commodity: Mentha
Contract: Dec
Exchange: MCX
Expiry: 30th Dec, 2016
Mentha Oil

 MENTHAOIL 1612(MXMTLZ6)2016/12/26 - Daily B:1021.10 A:1021.40
 O 1024.00 H 1024.10 L 1021.10 C 1021.40 ↑ V 10 T 3,681 I 2,559 -4.3 -0.42%
 EMA(9) 1017.3 (18) 1002.3

Technical Analysis:

- Rise in price and rise in open interest indicates long build up
- RSI is moving in the neutral region.
- Last candlestick depicts weakness in the market.
- Prices closed in between 9 and 18 days EMA
- We advise traders buy from the market for Moonday's trading session.

Strategy: Buy

Intraday Supports & Resistances			S2	S1	PCP	R1	R2
Mentha	MCX	Dec	898	909	1025.7	1060	1075
Pre-Market Intraday Trade Call*			Call	Entry	T1	T2	SL
Mentha	MCX	Dec	Buy	1022	1025	1028	1021

*Do not carry forward the position until the next day.

Disclaimer

The information and opinions contained in the document have been compiled from sources believed to be reliable. The company does not warrant its accuracy, completeness and correctness. Use of data and information contained in this report is at your own risk. This document is not, and should not be construed as, an offer to sell or solicitation to buy any commodities. This document may not be reproduced, distributed or published, in whole or in part, by any recipient here of for any purpose without prior permission from the Company. IASL and its affiliates and/or their officers, directors and employees may have positions in any commodities mentioned in this document (or in any related investment) and may from time to time add to or dispose of any such commodities (or investment). Please see the detailed disclaimer at <http://www.agriwatch.com/Disclaimer.php> © 2016 Indian Agribusiness Systems Pvt Ltd.