

Executive Summary

Soybean, meal and rapeseed-mustard extended gains altogether consecutive second week on improved buying in the local cash market and gains in crude during the week under review. Again crushers/solvent extractors and stockists are covering their stocks in rapeseed-mustard for near and medium-term.

Soy meal:

- ❖ Soy meal posted gains in tandem with soybean followed by renewed buying activity in the local cash market during the week under review.
- ❖ The poultry unit owners are still covering their stocks in rapeseed-mustard oil cake and soy meal followed by rise in seasonal supply at lower prices, remained supportive for the oil meal market.
- ❖ However, India's soy meal exports continued to remain weak and it was recorded 80% lower y-o-y in the month of March'15.
- ❖ The South American soybean harvesting is underway. The global soybean and meal supplies are expected to spurt in near-term with Brazilian soybean harvesting over by 80% and 10% in Argentina's where crushing is at full swing.
- ❖ The overseas soy meal exports eased m-o-m as well as y-o-y this season primarily due to the competitive international meal prices, including the meal of US, Brazil and Argentine origin compared the meal of Indian origin. India's soy meal exports this season are sharply lower as compared to the previous years.
- ❖ India exported 6.46 lac tons soy meal in FY 2014-15, registering a decline of 77.25% over previous FY 2013-14, when soybean meal exports were 28.41 lac tons.
- ❖ *The soy meal prices are likely to feature further gains in near-term.*

Soybean:

- ❖ The soybean continued uptrend followed by good buying interest in the cash market, gains in the international benchmark and surge in crude during the week under review.
- ❖ The soy prices were under pressure for long, but renewed buying in the beans in the cash markets by the crushers remained supportive.

- ❖ As discussed earlier, that most of the traders will divert their trade activities towards wheat in near-term with the commencement of wheat harvesting in major wheat growing states. Hence, several stockists and solvent extractors have showed buying interest in soybean before the availability fall in coming days.
- ❖ At the international front, rains in Argentina have slowed the ongoing soybean harvesting, as of Thursday of last week, Argentina's farmers had harvested 20% of this season's soybean crop, the farm ministry said.
- ❖ Rosario Grains Exchange has raised Argentina's 2014/15 soy harvest estimate to 59 million tonnes in the second week of April, up from March estimate of 58 million tonnes.
- ❖ *The domestic soybean prices will witness gain on buying renewed buy interest in the cash market but global supply pressure, lower crude and India's weak soy meal export sales with disparity on crushing the bean will limit the gains.*

RM Seed:

- ❖ RM seed extended gains on increased buying in the cash markets with addition support from higher BMD CPO after Malaysia's decision to cancel the export tax once again in May. Indian RM seed will continue to follow the Malaysian palm oil.
- ❖ The domestic RM seed crop harvesting in key producing region is over while it is underway in some parts of Rajasthan like Sri Ganganagar and Hanumangarh, it is also nearing completion in Haryana and Punjab.
- ❖ The seed supplies across the major mandis are at its peak with progressive harvesting and the daily all India arrivals have reached above 5.0-6.0 lakh bags a day. However, the all India supplies could not reach the previous year's level of 7 lakh bags a day yet, which were witnessed at the end of March 2014.
- ❖ The all India seed arrivals slightly fell and reported total of about 23,50,00 bags during the week under review compared to about 27,50,000 bags previous week. In Rajasthan the supplies were too reported lower at about 11,40,000 bags compared to about 15,90,000 bags previous week.
- ❖ Again, the millers and the stockists are the major buyers who are covering their stocks for future. The medium and long-term outlook for rapeseed-mustard remains stronger owing to the lower seed

production this season. Fall in planted area under seed this season and unprecedented rains in February and March which negatively hit the potential yield potential.

- ❖ Agriwatch has pegged India's rapeseed-mustard 2015/16 production at 5.9 million tonnes, down by 24% at 7.7 million tonne last season.
- ❖ Malaysia will once again slash its crude palm oil export tax to zero for the month of May against 4.5 percent in April. Malaysia had imposed 4.5% export tax on crude palm oil for April, ending the period of duty-free exports starting in Sept 2014.
- ❖ The step will give Malaysian producers and exporters a good advantage over their Indonesian counterparts. Once again the exemption of export duty by Malaysia and Indonesia will make the availability of palm oil cheaper for India.
- ❖ Exports of Malaysian palm oil products for Apr. 1-15 fell 3.0 percent to 470,058 tons from 484,453 tons shipped during Mar. 1-15 - cargo surveyor Societe Generale de Surveillance said on Wednesday..
- ❖ *Aggressive new crop seed buying by the millers and the stockists in near-term will boost the seed prices. However, Malaysia's decision of cancellation on imposing export duty on palm oil may weigh on the seed prices.*

International Highlights

- ❖ The scrap of the export tax on crude palm oil in May will give Malaysian producers and exporters a clear advantage over their Indonesian counterparts. Malaysia had imposed 4.5% export tax on crude oil in April since a long exemption from September'14.
- ❖ Since January Argentine soya oil export prices have fell by 15-20%, since January this year which has led to the boost in price competitiveness mainly vis-a-vis palm oil – Oil World.
- ❖ India's vegoil imports showed a continued rise which surged by 27% to 1.06 million tonnes in March'15.
- ❖ AgRural, Brazilian analyst, has estimated Brazil's 2014-15 soybean crop to 93.8 million tonnes from 93.3 million tonnes earlier. The production is record high, despite late plantings due to stress followed by dry weather initially.
- ❖ The U.S. Department of Agriculture expects world soy stocks to hit a record-high 89.5 million tonnes by the end of the 2014-15 season. USDA has estimated the global soybean production at a record 315.1 million tonnes for this season.
- ❖ Argentine growers have completed the harvest above 5% of this year's soy, with high yields in the central farm belt compensating for flood damage in northern region - Rosario grains exchange. Argentina's crop range from 56 to 60 million tons v/s 53.4 million tons last season. Mixed soybean yield reported from Brazil and soybean harvesting have been 60 percent completed.
- ❖ Brazil's 2014/15 soybean harvesting is in full swing and the production is forecast to total a record 94.4 million tonnes, compared with a previous forecast of 95 million tonnes by Safras & Mercado.
- ❖ Allendale has estimated U.S. farmers to increase 2015/16 soybean plantings to a record 86.052 million acres with likely reduced sowing of corn, if realized, it would exceed last year's record plantings of 83.701 million acres.
- ❖ The Argentina's government expects a 2014/15 soy crop record-high at 58 million tonnes, just above the 57 million tonnes forecast by the Buenos Aires Grains Exchange. The figures are the revised estimates of Rosario Grain Exchange raising its previous production estimate for 54.5 million tonnes. Recent rains are cited as the reason for boost in yield and eventually the production.
- ❖ As per Oil World, Indonesia palm oil production seen at 32.4 million tons for 2014-15 v/s 30.5 million tons last year and Malsyain palm oil production seen at 19.4 million tons for 2014-15, down one million tons from last year. Moreover, CPO (at Rotterdam) and RBD palmolein (FOB Malaysia) prices for 2015 seen at USD 770 /T and USD 750/T respectively.
- ❖ Oil World has estimated, Argentina's shipments of vegetable oils are expected to improve by approximately 0.6 Mn T this season.
- ❖ EU-28 crushings of rapeseed rose above expectations and touched a record 13.5 Mn T in July/Dec 2014, as reported by Oil World.
- ❖ On the production front, combined crude palm oil output from Malaysia and Indonesia is expected to rise to 51.1 million tons in 2015 v/s 49.2 million tons last year.
- ❖ Brazil's 2014/15 soybean production is estimated at 92.3 million tonnes by Abiove in the new forecast in Feb., which is up 1.6 million tonnes from its previous estimate of 91.9 million tonnes.

- ❖ Brazil based analyst Safras & Mercado forecast a 2014/15 Brazilian soybean output at 95.0 million tonnes, down from 95.9 million tonnes estimated in December.
- ❖ Brazil's Agriculture Ministry's crop supply agency Conab has estimated its 2014/15 soybean production at record 95.8 million tonnes, higher than the USDA. It also said Brazil is expected to export a record 49.6 million tonnes of the soybean, which is sharply higher from the 45.6 million tonnes estimated to be exported during the current season.
- ❖ The global production of soybeans has been raised by 1.3 Mn T to 309.1 Mn T, 24.3 Mn T, by Oil World, above last season – Oil World.
- ❖ As per Oil World, the global supplies of palm oil is expected to rise by only 2.2 Mn T in Oct/Sept 2014/15, which is down from an average annual growth of 3.9 Mn T in the past 3 seasons.
- ❖ China's soybean import is estimated to 73.5 Mn T in Oct/Sept 2014/15 by the Oil World.
- ❖ As per Abiove, Brazil's soybean crop for 2014/15 is estimated at 91 million tons and exports forecast at 48 million tons. As per Oil World, oilseed production may rise to 519.7 million tons, up 4.31 percent from 2013-1. The total oilseeds production includes 310.80 million tons of soybean, 68 million tons of rapeseed, 41.4 million tons of sunflower seed and rests others.
- ❖ The total oilmeals consumption of five N. African countries in 2014/15 is estimated at 6.2-6.3 Mn, which has more than doubled within 10 years.
- ❖ India's import requirements of vegetable oils are set to increase to a new high of 12.2 Mn T in 2014/15, as reported by Oil World.
- ❖ Oil World has estimated a combined soy meal imports of 8 key countries in Southeast Asia at a record 16.6 Mn T next season, which is up 1.4 Mn T on the year.
- ❖ As per Agroconsult, Brazil is likely to produce 95.1 million tons of soybeans in 2014-15, up 1 million tons from previous estimates. Moreover, Argentina soybean crop output for 2014-15 seen at 56.6 millions tons.
- ❖ The palm oil production in Malaysia is estimated to reach a record 19.7 million tons to 19.9 million tons. Further, Indonesia's output is likely an all-time high of 30.5 million tons or more this year. Production is estimated by Dorab Mistry, Director at Godrej International Ltd. Both the countries account for 86% of world total supplies.
- ❖ Germany's winter rapeseed output is estimated at 5.8 million tonnes in 2014, up from 5.7 million tonnes in 2013, German farmer's association, DBV said.
- ❖ Oil World has estimated the Canadian canola crop at 14.7 Mn T in 2014 which is considerably below the record 17.96 Mn T last year.
- ❖ EU-28 rapeseed outturn has turned out higher than expected there is an upward revision to 23.5 Mn T. EU rapeseed exports are also improving.

Oil Meal Prices at Key Spot Markets:
Soy DOC Rates at Different Centers

Centres	Ex-factory rates (Rs/ton)		
	17-Apr-15	10-Apr-15	Parity To
Indore (MP)	32700	32000-32200	Gujarat, MP
Kota	33000	31500	Rajasthan, Del, Punjab, Haryana
Dhulia/Jalna	32500	32500	Mumbai, Maharashtra
Nagpur (42/46)	32400-32800	31500-32000	Chattisgarh, Orissa, Bihar, Bangladesh, AP, Kar, TN
Nanded	33400	33400	Andhra, AP, Kar ,TN
Latur	32700	32900	-
Sangli	33200	33400	Local and South
Sholapur	32800	33100	Local and South
Akola	32100	31700	Andhra, Chattisgarh, Orrisa,Jharkhand, WB
Hingoli	33000	33000	Andhra, Chattisgarh, Orrisa,Jharkhand, WB
Bundi	32400-32500	31200-31300	-

Soy DOC at Port

Centers	Port Price	
	17-Apr-15	10-Apr-15
Kandla (FOR) (INR/MT)	33500	32500
Kandla (FAS) (USD/MT)	537	521

International Soy DOC

Argentina FOB USD/MT	16-Apr-15	9-Apr-15	Change
Soybean Pellets	352	351	1
Soybean Cake Flour	352	351	1
Soya Meal	360	359	1
Soy Expellers	360	359	1

Sunflower (DOC) Rates	Ex-factory rates (Rs/ton)		
Centers	17-Apr-15	10-Apr-15	Change
Adoni	22000	20800	1200
Khamgaon	NA	NA	-
Parli	22000	21000	1000
Latur	21500	20700	800

Groundnut Meal (Rs/MT)	17-Apr-15	10-Apr-15	Change
Basis 45%, Saurashtra	27500	27000	500
Basis 40%, Saurashtra	24500	24000	500
GN Cake, Gondal	27000	27000	Unch

Mustard DOC/Meal	17-Apr-15	10-Apr-15	Change
Jaipur (Plant delivery)	17500	16000	1500
Kandla (FOR Rs/MT)	18500	16700	1800
Sri Ganganagar	2035	1920	115

Progress of Sown Area – Rabi Oilseeds, India

In the official *rabi oilseeds* planting report (week ending 12 Mar. 2015), the area coverage under *Rabi* oilseeds is reported at 84.01 lakh hectares, down 8% from 91.45 lakh ha during the same period last year. Of the major oilseeds, rapeseed/mustard seed sowing is reported down by 8.6% at 65.17 lha compared to 71.32 lha during the same period last year. Groundnut at 8.43 lha vs 8.71 lha, safflower at 0.95 lha vs 1.78 lha, sunflower at 3.19 lha vs 4.40 lha, sesamum 2.26 lha vs 1.12 lha, linseed 3.21 lha vs 3.59 lha during the same period last year.

Crop	As on 12 Mar. 2015	As on 12 Mar. 2014	% Change
Rapeseed/Mustard	65.17	71.32	-8.6
Groundnut	8.43	8.71	-3.2
Safflower	0.95	1.78	-46.6
Sunflower	3.19	4.40	-27.5
Sesamum	2.26	1.12	101.8
Linseed	3.21	3.59	-10.6
Others	0.80	0.53	50.9
Total Oilseeds	84.01	91.45	-8.1

(Area in lakh hectares) Source: GOI

Soybean

The soybean continued uptrend followed by good buying interest in the cash market, gains in the international benchmark and surge in crude during the week under review.

The soy prices were under pressure for long, but renewed buying in the beans in the cash markets by the crushers remained supportive.

As discussed earlier, that most of the traders will divert their trade activities towards wheat in near-term with the commencement of wheat harvesting in major wheat growing states. Hence, several stockists and solvent extractors have showed buying interest in soybean before the availability fall in coming days.

At the international front, rains in Argentina have slowed the ongoing soybean harvesting, as of Thursday of last week, Argentina's farmers had harvested 20% of this season's soybean crop, the farm ministry said.

Rosario Grains Exchange has raised Argentina's 2014/15 soy harvest estimate to 59 million tonnes in the second week of April, up from March estimate of 58 million tonnes.

In the latest production estimates in April, Argentina's 2014/15 soybean production is estimated at 58.5 million tonnes, the Buenos Aires Grains Exchange said on 01 April'15, raising its previous estimate of 57 million tonnes considering higher yield.

Informa Economics has forecasted 2014 Brazil soybean outturn at 93.0 million tonnes, up 500,000 from previous forecast-trade.

Further, weaker soy shipments mainly from South America in recent weeks lowered the stocks/inventories of the major importers like China. Port inventories of imported soybeans in China fell followed by the year-on-year decline of arrivals in Febr/Mar 2015.

As per Oil World, a notable growth in imports and crushings of soybeans limited the Iranian appetite for imported soya products so far this season, resulting in a year-on-year reduction of purchases and arrivals of soya meal. The analyst also reports that, since January Argentine soya oil export prices have declined by 15-20%, gaining competitiveness mainly vis-a-vis palm oil.

Further about 85% of the Brazilian soybean crop have been harvested till last week.

Improved domestic buying in the beans and likely rise in the Chinese soy buying in near-term will further boost the soybean prices.

Improved edible oil imports and disparity in soybean crushings and lower soy meal export sales of Indian origin continued to be the limiting factors for Indian soybean.

The domestic soybean prices will witness gain on buying renewed buy interest in the cash market but global supply pressure, lower crude and India's weak soy meal export sales with disparity on crushing the bean will limit the gains.

Soy meal

Soy meal posted gains in tandem with soybean followed by renewed buying activity in the local cash market during the week under review.

The poultry unit owners are still covering their stocks in rapeseed-mustard oil cake and soy meal followed by rise in seasonal supply at lower prices, remained supportive for the oil meal market.

However, India's soy meal exports continued to remain weak and it was recorded 80% lower y-o-y in the month of March'15.

India's near and medium-term fundamentals remain bearish for domestic soy meal mainly due to weak international prices with higher global soy supply scenario and lower crude. The competitive S. American soy meal price compared to India's, remained negative factor for domestic meal.

The South American soybean harvesting is underway. The global soybean and meal supplies are expected to spurt in near-term with Brazilian soybean harvesting over by 80% and 10% in Argentina's where crushing is at full swing.

Though fresh buying in the meal is witnessed in the local cash market., but the domestic soy meal demand has been already hit due to recent incidents of bird flu in some parts of Kerala, affecting poultry production in several other parts of South India where there are highest number of poultry units, and poultry is the largest consuming industry of soy meal in India.

The overseas soy meal exports eased m-o-m as well as y-o-y this season primarily due to the competitive international meal prices, including the meal of US, Brazil and Argentine origin compared the meal of Indian origin. India's soy meal exports this season are sharply lower as compared to the previous years.

India exported 6.46 lac tons soy meal in FY 2014-15, registering a decline of 77.25% over previous FY 2013-14, when soybean meal exports were 28.41 lac tons.

Exports of soy meal during March, 2015 was 46,670 tons as compared to 2,32,176 tons in March, 2014 showing a decrease by 80% over the same period last year.

During the first half of the current Oil year i.e. October'14 to March'15, total exports are 5,49,627 tons as against 19,64,581 tons last year, showing a decrease by 72%.

France, Oman and Vietnam remained the top 3 buyers of Indian soy meal in March 2015.

India's soy meal exports declined to 46,670 tonnes in March from 64,514 tonnes in Feb., the Solvent Extractors' Association of India. Of total oilmeal shipments in Mar., soy meal comprised of 45,917 tonnes, rapeseed meal (64,668 tonnes), ricebran extraction (5,200 tonnes) and castorseed meal was (71,575 tonnes).

Considering the current scenario, we feel that India may not be able to regain the lost market this season which it lost last season due to prices competitive in US, and South American meal followed by record supply scenario.

The soy meal prices are likely to feature range-bound movement in near-term.

Preference of the soy meal of Indian origin mainly by the South-East countries due to logistic and freight advantage and demand for non-GMO meal will continue to lend support to the domestic soy meal. Iran, Japan, Europe, Thailand, Vietnam, Indonesia and South Korea could be seen as the major destinations for Indian soy meal exports.

India's Y-o-Y soy meal prices are lower. Soy meal export price, FOR Kandla (Apr – May delivery) was quoted between Rs 32,500 – 33,800/MT compared to Rs 39,200 – 40,150/MT during the same period last year.

Recommendation: *India's soy meal prices are under global supply pressure. Indian meal exporters are advised to aggressively explore the lost markets last season especially traditional South and Far-East Asian destinations and Iran. India is into the period of higher exports considering seasonality. The domestic meal prices are likely to feature range bound movement with weak bias in near-term. FOR, Kandla (Apr. - May delivery) is expected to feature range-bound movement and the quotes are expected to slightly improve and will in the range of Rs. 32600 – 34000/MT levels in the upcoming week. They remained between Rs. 32,500 – 33,800/MT during the week.*

Technical Analysis:

NCDEX Soybean Futures



Soybean Spot, Indore



*Note: Daily Chart

Support & Resistance NCDEX Soybean – Jun. contract

S1	S2	PCP	R1	R2
3492	3437	3681	3850	3900

- Soybean rallied on buying interest during the week, consecutive gains in the third week.
- Prices closed above 9-day and 18-day EMA.
- RSI and stochastic are rising in neutral region.
- MACD is rising in positive territory.
- The prices are expected to feature gains in the coming week.
- Trade Recommendation (NCDEX Soybean – Jun.) Week: BUY Above 3675. Levels: Target – 3785; T2- 3845, SL -3615.

Trade Recommendation Soybean - Spot: Soybean prices will feature range bound move with firm-bias with good buying witnessed in recent days. However, the market will under pressure in medium-term. The prices are likely to be in the band of 3650 – 3800 levels (Indore, Plant basis) during the week. The prices remained within the price band of 3500 – 3700 during the week in review.

Rapeseed - Mustard Seed

RM seed extended gains on increased buying in the cash markets with addition support from higher BMD CPO after Malaysia's decision to cancel the export tax once again in May. Indian RM seed will continue to follow the Malaysian palm oil.

The domestic RM seed crop harvesting in key producing region is over while it is underway in some parts of Rajasthan like Sri Ganganagar and Hanumangarh, it is also nearing completion in Haryana and Punjab.

The seed supplies across the major mandis are at its peak with progressive harvesting and the daily all India arrivals have reached above 5.0-6.0 lakh bags a day. However, the all India supplies could not reach the previous year's level of 7 lakh bags a day yet, which were witnessed at the end of March 2014.

The all India seed arrivals slightly fell and reported total of about 23,50,00 bags during the week under review compared to about 27,50,000 bags previous week. In Rajasthan the supplies were too reported lower at about 11,40,000 bags compared to about 15,90,000 bags previous week.

Again, the millers and the stockists are the major buyers who are covering their stocks for future. The medium and long-term outlook for rapeseed-mustard remains stronger owing to the lower seed production this season. Fall in planted area under seed his season and unprecedented rains in February and March which negatively hit the potential yield potential.

Agriwatch has pegged India's rapeseed-mustard 2015/16 production at 5.9 million tonnes, down by 24% at 7.7 million tonne last season.

Malaysia will once again slash its crude palm oil export tax to zero for the month of May against 4.5 percent in April. Malaysia had imposed 4.5% export tax on crude palm oil for April, ending the period of duty-free exports starting in Sept 2014.

The step will give Malaysian producers and exporters a good advantage over their Indonesian counterparts. Once again the exemption of export duty by Malaysia and Indonesia will make the availability of palm oil cheaper for India.

Exports of Malaysian palm oil products for Apr. 1-15 fell 3.0 percent to 470,058 tons from 484,453 tons shipped during Mar. 1-15 - cargo surveyor Societe Generale de Surveillance said on Wednesday.

On the production front, combined crude palm oil output from Malaysia and Indonesia is expected to rise to 51.1 million tons in 2015 v/s 49.2 million tons last year. This is again a bearish factor for India's rapeseed-mustard.

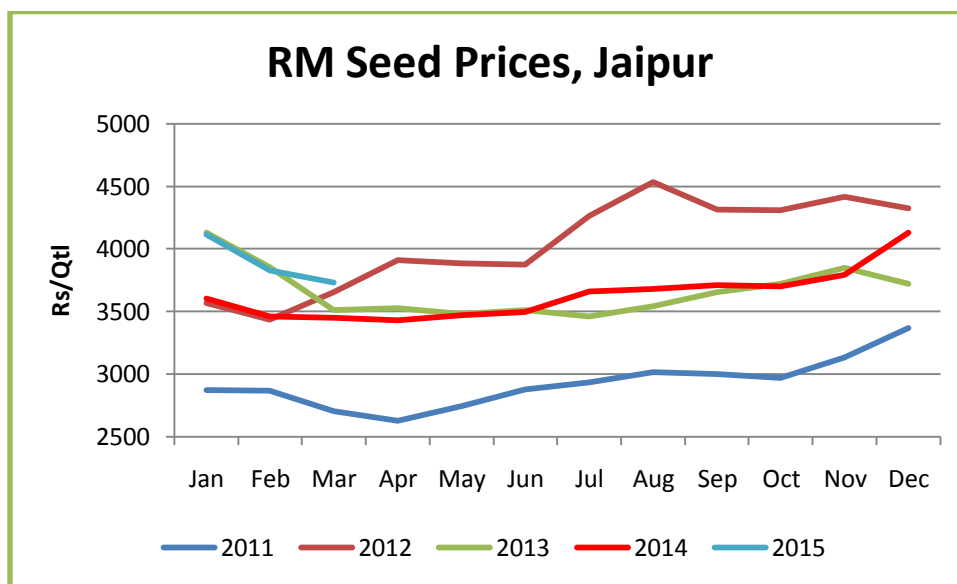
As per MPOB's data, Malaysian palm oil end-stocks rose on m-o-m due to higher production of palm oil in March. Inventories in Malaysia rose 7.02 percent in March to 1.865 million tons against 1.743 tons month ago and production of palm oil during March was 1.494 million tons v/s 1.121 million tons last month. The report is bearish for edible oil complex.

Exports of Malaysian palm oil products for March increased to 14.8% to 1,140,355 tonnes from 993,376 tonnes shipped during February, cargo surveyor Societe Generale de Surveillance on 31 March 15.

Overall, India's edible oil imports remained higher in previous months, which have lead to severe crisis to domestic solvent extractors owing to disparity on crushing the seed and bean.

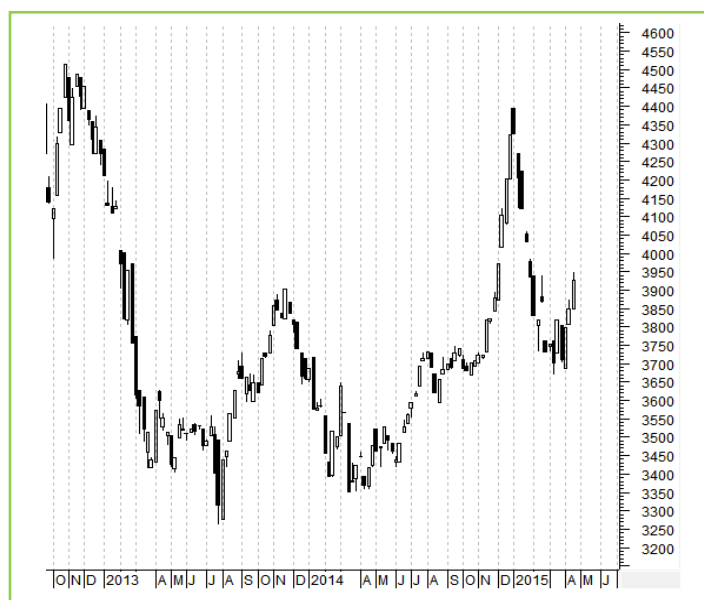
India's vegetable oil imports in March rose to 1062,031 tons (which consist of 1053,034 tons of edible oils and 8,997 tons of non-edible oils) from 866,167 tons in the previous month. Indian buyers imported 616,402 tons of crude palm oil, 51,576 tons of RBD palmolein, 191,150 tons of crude soybean oil and 193,906 tons of other edible oils during March 2015 - SEA.

Aggressive new crop seed buying by the millers and the stockists in near-term will boost the seed prices. However, Malaysia's decision of cancellation on imposing export duty on palm oil may weigh on the seed prices.



Technical Analysis:
NCDEX RM Seed Futures


***Note: Daily Chart**

RM Seed Spot, Jaipur

Support & Resistance NCDEX RM Seed – May. contract

S1	S2	PCP	R1	R2
3582	3500	3708	3900	3950

- RM seed prices extended gains on buying interest in the market.
- Prices closed above 9-day and 18-day EMA.
- RSI and stochastic are rising in neutral zone.
- MACD is moving upwards in positive territory.
- The prices are expected to feature gains in the coming week.
- Trade Recommendation (NCDEX Soybean – May.) Week: BUY Above 3700. Levels: Target – 3800; T2-3850, SL -3640.

Trade Recommendation RM Seed Spot (Jaipur basis): In spot, the RM seed surged on better demand from millers and the stockists for new crop crushings. The continued buying interest in cash market is expected to boost the seed prices and they are expected to be between 3900 – 4000 levels during the week. They were between 3845 – 3950 levels during the week under review.

Annexure

Progress of Sown Area – Kharif Oilseeds, India

In the official *kharif oilseeds* planting report (week ending 09 Oct 2014), the area coverage under *Kharif* oilseeds is reported at 178.47 lakh hectares, down 8.4% from 194.90 lakh ha previous year. Of the major oilseeds, soybean sowing is reported down by 10% at 110.22 lha compared to 122.20 lha during the same period last year. Groundnut at 37.25 lha vs 43.19, sunflower at 2.05 lha vs 2.43 lha, sesamum 16.31 vs 14.91, niger 2.28 lha vs 2.33 lha and castor at 10.35 lha vs 9.84 lha during the same period last year.

Crop	As on 09 Oct 2014	As on 09 Oct 2013	% Change
Groundnut	37.25	43.19	-13.8
Soybean	110.22	122.20	-9.8
Sunflower	2.05	2.43	-15.6
Sesamum	16.32	14.91	9.5
Niger	2.28	2.33	-2.1
Castor	10.35	9.84	5.2
Total Oilseeds	178.47	194.90	-8.4

(Area in lakh hectares) Source: GOI

Rabi MSP 2014-15

- ❖ The Cabinet Committee on Economic Affairs has approved the Minimum Support Prices (MSPs) for Rabi Oilseeds Crops of 2014-15 season to be marketed in 2015-16 as follows: The MSP of Rapeseed/Mustard is raised by Rs. 50/Qtl to Rs. 3100/Qtl from Rs. 3050/Qtl earlier. For Safflower too it is increased by Rs. 50/Qtl to Rs. 3050/Qtl from Rs. 3000/Qtl in 2013-14.

Kharif MSP

- ❖ Government has increased minimum support price (MSP) of sunflower seed by Rs 50 to 3750 a quintal, further a hike of Rs 100 on sesamum and nigerseed at Rs 46,00 and 36,00 a quintal respectively. However, the MSP of soybean and groundnut seeds remained unchanged at Rs 2500-60 and Rs 4000 a quintal respectively this season.

Disclaimer

The information and opinions contained in the document have been compiled from sources believed to be reliable. The company does not warrant its accuracy, completeness and correctness. Use of data and information contained in this report is at your own risk. This document is not, and should not be construed as, an offer to sell or solicitation to buy any commodities. This document may not be reproduced, distributed or published, in whole or in part, by any recipient hereof for any purpose without prior permission from the Company. IASL and its affiliates and/or their officers, directors and employees may have positions in any commodities mentioned in this document (or in any related investment) and may from time to time add to or dispose of any such commodities (or investment). Please see the detailed disclaimer at <http://www.agriwatch.com/Disclaimer.asp>
 © 2015 Indian Agribusiness Systems Pvt Ltd.