

Oil Meal Weekly Research Report

Contents

- ❖ Executive Summary
- ❖ Outlook – Cash Market
- ❖ Soybean – Domestic & International
- ❖ Soy meal
- ❖ Technical Analysis - Soybean
- ❖ Rapeseed - Mustard
- ❖ RM Seed Supply, Rajasthan
- ❖ Technical Analysis – RM Seed
- ❖ Annexure – Prices etc.

Executive Summary

The weekly average domestic soybean prices went up on the back of bullish CBOT soybean. Soybean prices at Indore plant went up and increased by 4.14 % compared to a week ago.

This week Indore weekly average soymeal prices too went up and witnessed gains in tandem with bullish soybean prices.

RM seed prices remained sideways and witnessed a mild gain of 0.9%, expected to correct further on new crop arrivals. And stock limit by the government is likely to keep RM seed prices under pressure.

According to GOI, as on 04th Feb, All India Mustard sowing is up by 25.3% as compared to previous year. This season, Rapeseed/Mustard remained top choice of the farmers who hope the lucrative prices will continue in the new season.

CBOT soybean witnessed gains this week too on weather concern in Argentina and Brazil.

According to Solvent extractor association of india, India's January'2022 soymeal exports declined by 81% to 52,771 metric tonne compared to 2,83,167 metric tonne in the same period last year.

Tight crushing and low arrivals continued in January 22 too. Overall in Oct'21-Jan'22 soybean crush remained low by 40% and arrivals low by 25% as compared to previous year same period.

Outlook – Cash Market

Outlook - Soybean (Spot, Nagpur): This week soybean prices are expected to trade range bound with firm bias on the back of CBOT soybean. The prices (Indore, Plant basis) are expected to feature range bound movement in the price band of 6,800 – 7,100 level in the near term.

Outlook – Soy meal:

Soymeal prices are likely to trade range bound with firm bias despite the subdued soymeal export demand due to uncompetitive prices in global markets. The soy meal prices (Indore) are likely to feature range-bound movement between Rs. 55,000 – 60,000 /MT.

Outlook - Rapeseed-Mustard (Spot, Jaipur basis): Rapeseed-mustard is expected trade range bound with weak bias amid new crop arrivals. The seed prices are likely to trade in the range between 7500 – 8,000/Qtl. in the short-run.

Monday, February 21, 2022

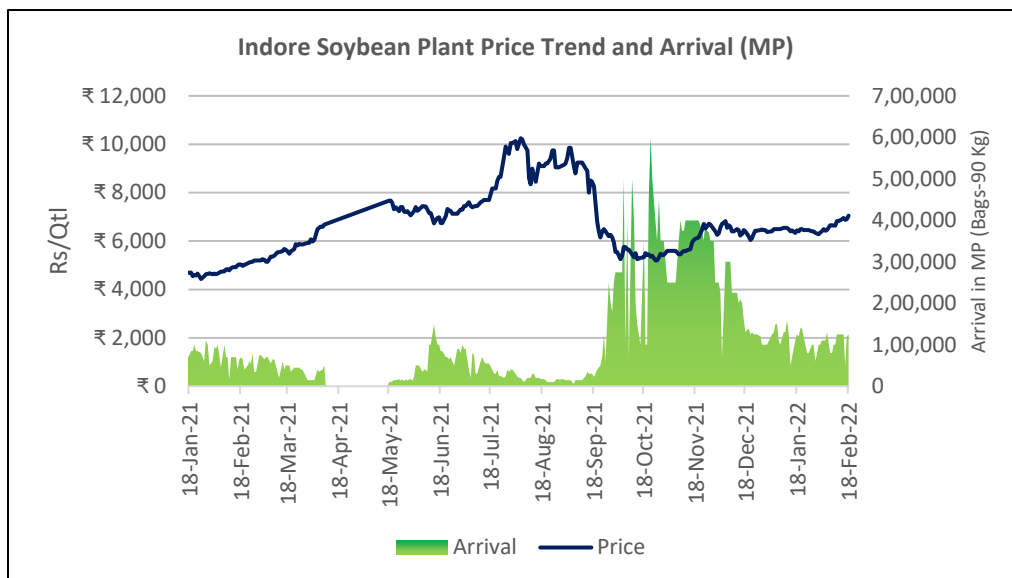
Soybean

This week, soybean Indore plant weekly average prices continued gains on the back of bullish CBOT soybean.

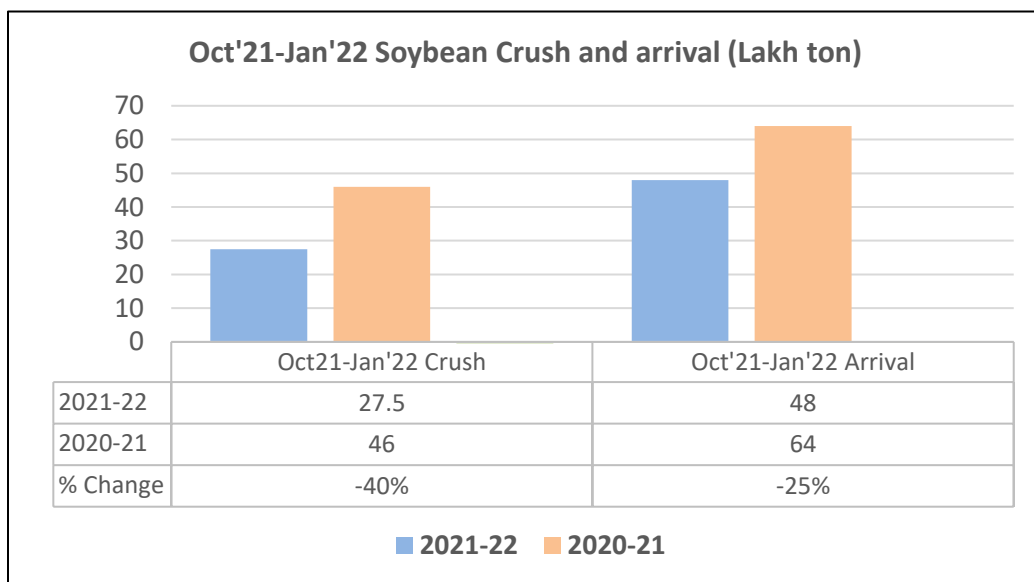
The average weekly price of soybean at Indore plant was up by 4.14% to Rs. 6,917 a quintal, compared to Rs. 6,642 a week ago. The market made a low of 6,825 and high of 7,050 during the week.

This week, the total arrival in MP stood at 6.7 Lakh bags vs 6.15 Lakh bags last week. In

Maharashtra arrivals stood at 6.75 lakh bags Vs 6.8 lakh bags last week and in Rajasthan the arrivals stood at 0.79 lakh bags vs 0.61 lakh bags previous week.



- SOPA reported Oct'21-Jan'22 soy crush down by 40% at 27.5 lakh tonnes as compared to 46 lakh tonne previous year same period, while arrival too remained low by 25% at 48 lakh tonnes as compared to 64 lakh tonne previous year same period. Low domestic and export soymeal demand and lower crush margin has resulted into crushing being low and kept soy prices checked. Additionally, farmers are holding more soybean in anticipation



of higher prices in future as a result of which the arrival remained lower till Jan'22. Out of 100 lakhs tonne soybeans available for soy crush this season, 27.5 lakh tonnes have been crushed till Jan'22, it is estimated that 72.5 lakh tonnes left for crushing for rest of current season.

Monday, February 21, 2022

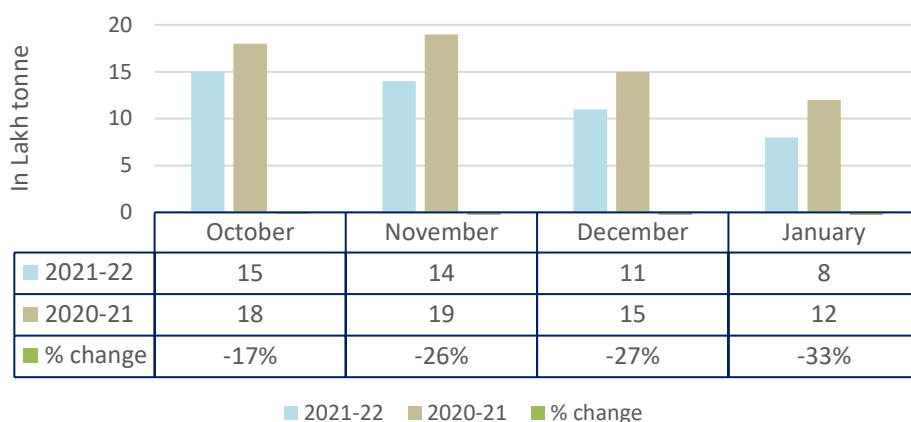
Despite higher production in MY 2021-22, soy arrivals remained low in the first four months of this season. In Jan'22, arrivals remained low by 33% at 8 lakh tonnes as compared to previous year same period at 12 lakh tonnes.

Given the squeeze in crush margins and low soymeal export demand, soybean crush too remained lower in Jan'22 by 48% at 6.5 as compared to previous year at 12.5 lakh tonnes and kept soy prices sluggish. As Crushing has been lower in first four months of this season, if soymeal demand in rest of eight months doesn't revive and crushing doesn't pick up, carry out stock is expected to be higher than previous year.

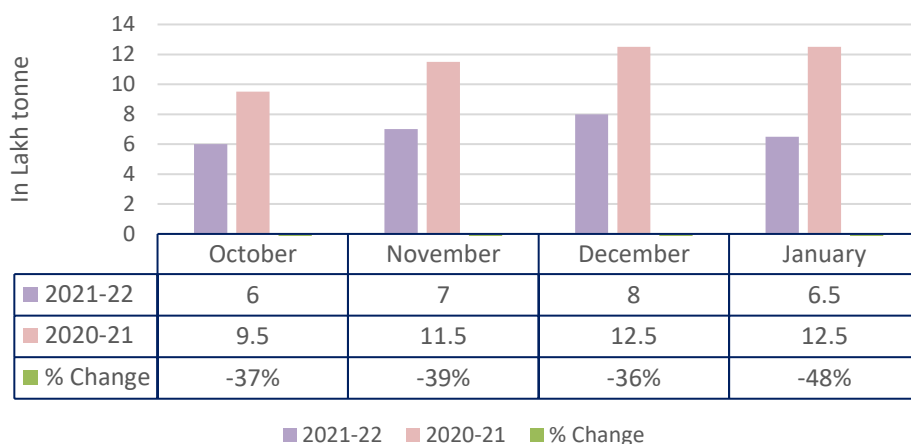
On 03rd of Feb22,

Department of Food and Public Distribution has issued a stock limit notification on oilseed and edible oil rolling over earlier stock limit which was issued on 8th Oct'21 and was expected to expire on 31st March'22. In its recent notification Govt. has imposed stock limit on edible oil and oil seed with specified quantities till 30th June22. However, six states, Uttar Pradesh, Karnataka, Himachal Pradesh, Telangana, Rajasthan and Bihar are exempted from the quantities specified, as they have already imposed stock limit. And few exceptions have been given to importer and exporter.

MY 2020-21 & 2021-22 Soybean Arrival



MY 2020-21 & 2021-22 Soybean Crush



Monday, February 21, 2022

Stock limit by Department of Food and Public Distribution, As on 3rd February, 2022					
Name of Essential Commodity	Retail	Wholesale	Bulk consumers (Big chain retailers shops)		Processor
			Retail outlets	Depot	
Edible Oil	30 Qtl	500 Qtl	30 Qtl	1000 Qtl	90 days of storage capacity
Edible Oilseeds	100 Quintals	2000 Quintals	-----		90 days production of edible oils, as per daily input production capacity

As soybean arrivals have been lower, there will be minimal impact on soybean prices due to stock limit. However, RM seed is expected to remain under pressure due to stock limit, as record crop in the market is about to arrive.

As per 2nd Advance Estimates, released by the Department of Agriculture and Farmers Welfare, the estimated production of soybean during 2021-22 is 131.16 lakh tonne vs 128.97 lakh tonne last year.

Agriwatch has estimated India's 2021/22 soybean output estimate to 12 million tonnes, vs 10.45million tonnes in 2020/21.

International:

CBOT March soybeans witnessed gain of 1.17% to \$ 16.01 a bushel for the week ended 18th Feb. May futures too increased by 1.09% to \$ 16.03 a bushel. Weather concern in south American continent supported price gains.

AgRural has slashed its previously estimated Brazil soybean production by 3.4 MMT. Earlier it was estimated to all-time record of 133.4 MMT but it has now been reduced to 130 MMT. Dry weather condition prevailing in Argentina and Brazil has adversely affected soy yield. Brazil's 2021-22 soybean harvesting has reached to 25.6%.

CONAB in its Feb'22 estimates, slashed Brazil 2021-22 soybean production by 15 MMT to 125.47 MMT.

According to USDA February'22 report, 2021-22 US soy production kept unchanged at 120.70 MMT as compared to previous month while last year it was 114.74 MMT.

However, Argentina's 2021-22 soy production slashed by 1.5 MMT to 45 MMT as compared to previous month at 46.5MMT while last year it was 46.20 MMT, Brazil soy production too slashed by 5 MMT to 134 MMT as compared to previous month at 139 MMT while last year it was 138 MMT. Dry weather conditions in south America has resulted in production cut.

USDA in its Feb'22 estimates, China's 2021-22 soybean import slashed by 3 MMT at 97 MMT as compared to previous months estimates and previous year at 99.7 MMT. Oct'21 to Dec'21 soybean import is down by 13%.

Monday, February 21, 2022

The pace of soybean processing has slowed since October 2021 as margins are squeezed and crushers have been hampered by high input costs and low feed demand.

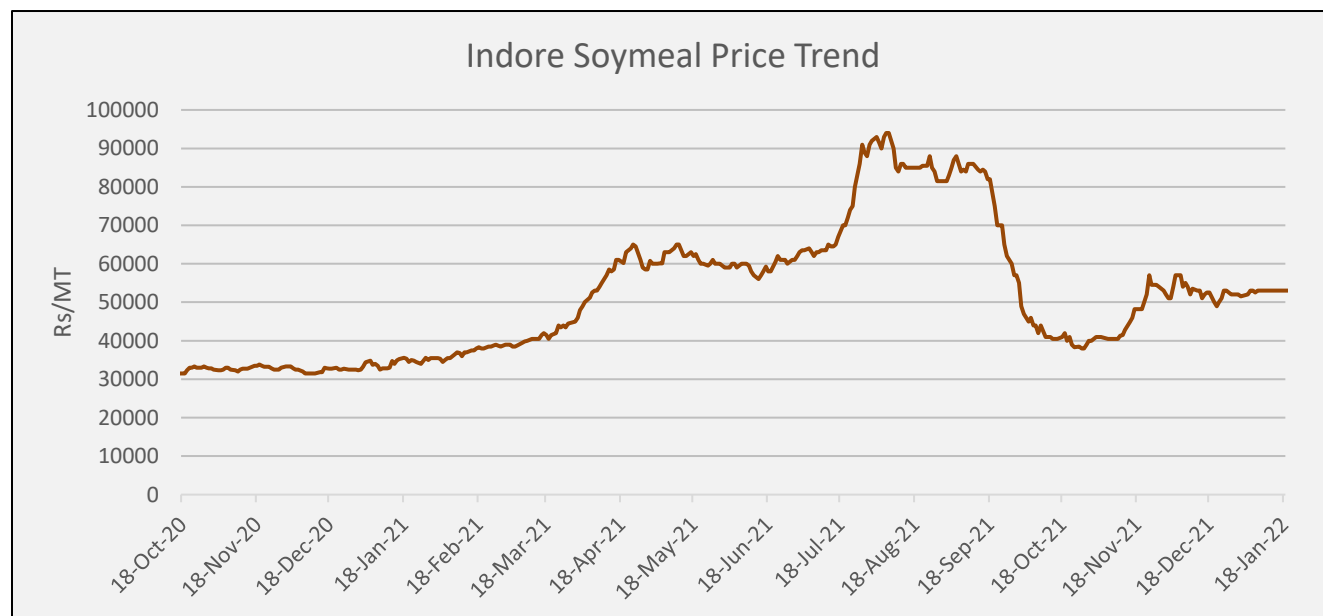
According to National Association of Grain Exporters (ANEC), Brazil's soy export in Jan'22 stood at 2.4 MMT compared with 0.51 MMT in the same month last year.

As on 10th Feb, according to Buenos Aires Grain Exchange (BAGE), Soybean sowing progress in Argentina stood at 100% Vs 100% last year same period and 100% five-year average. And BAGE has estimated 37% soy crop is in excellent to good condition Vs 37% previous week, 46% soy crop is in fair condition Vs 45% previous week and 17% soy crop is in poor/very poor condition Vs 18% previous week. Overall, weather conditions have worsened the soy crop condition and resulted in production cut by 1.5 MMT to 45 MMT by USDA in its Feb'22 estimates.

Outlook: This week Soybean prices is likely to continue trading rangebound with firm bias. Bullish CBOT soybean which went up by 1.17% this week underpinning domestic prices in near term. We expect prices of soybean at Indore plant to trade in the range of Rs.6,800/Qtl to Rs 7,100/Qtl this week.

Soymeal

This week Indore weekly average soymeal prices continued gains as compared to previous week followed by bullish movement in soybean prices.



The weekly average prices of soymeal at Indore increased by 4.6% to Rs 55,750 /MT and was quoted between Rs 55,000 – 56,500/MT throughout the week. This compares with previous week's average of Rs 53,300/MT and range of Rs 51,800– 55,000/MT.

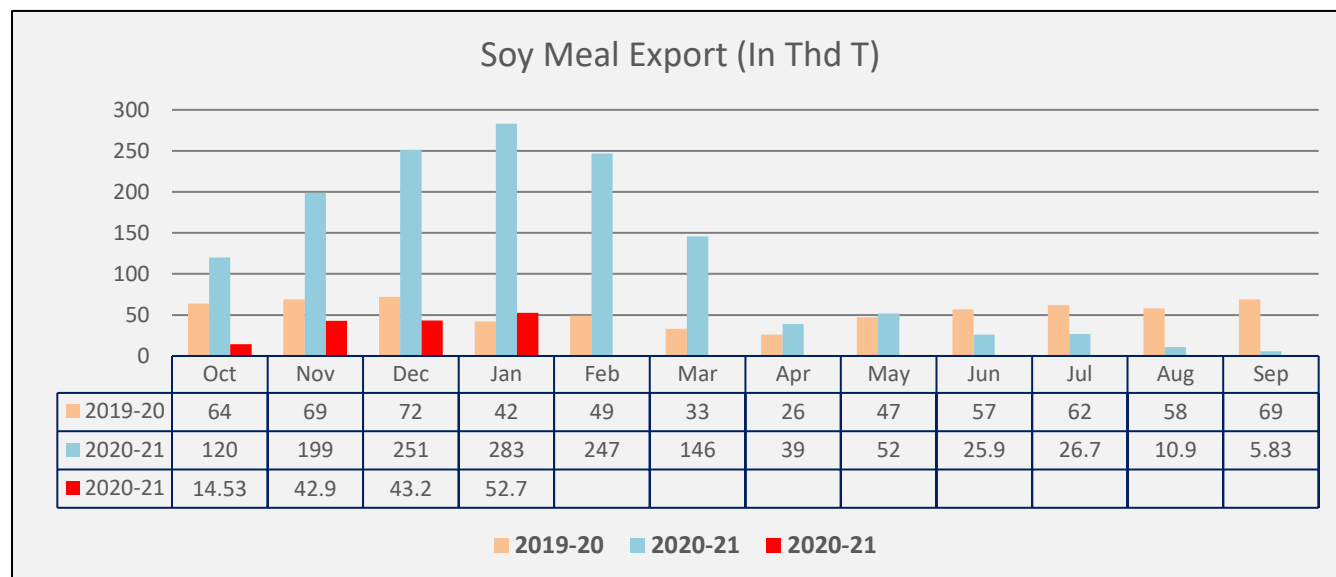
At Latur, the weekly average went up to Rs. 56,833/MT compared to Rs. 56,333/MT a week ago, in Nanded too it went up to Rs. 57,250/MT compared to Rs. 55,250/MT a week ago. In Kota the meal prices were up to Rs. 59,033/MT compared to Rs. 56,416/MT previous week.

Department of Consumer Affairs, Food and Public Distribution has imposed stock limit on soymeal till June 30, 2022. Soymeal millers, processors or plants are allowed to hold stocks only up to 90 days of production, the limits were imposed after amending the Essential Commodities Act (1955) to include soymeal in the category. We think the stock limit on soymeal will have minimal impact as crushers store soymeal generally for 10-15 days. As per Agriwatch estimates, total production of soymeal in the country for MY 2021-22 is likely to be 80 lakh tonnes. Annual soymeal consumption stands between 60-65 lakh tonnes while 15-18 lakh tonnes soymeal is exported annually. So, demand and supply of soymeal in the country seems balanced.

Currently India is outpriced for soybean meal export as Jan'22 Monthly average FAS Kandla is quoted above USD 750/MT Argentina FOB soymeal USD 460/MT. SBM FAS kandla is still outpriced by USD 290. Usually FAS kandla trade slightly higher than other GM soymeal but difference between Indian soymeal and Argentina soymeal

Monday, February 21, 2022

soared to \$743 in Aug'21 and USD 670 in Sept'21. India's Soymeal export is likely to remain weak for the next few months too due to higher prices and tight crush margin.



According to Solvent extractor association of india, India's January'2022 soymeal exports declined by 81% to 52,771 metric tonne compared to 2,83,167 metric tonne in the same period last year. Further, the soymeal shipments too declined by 73% to 3,15,108 metric tonne in aggregate, during the months (April-Jan.) of Financial Year 2021-22 compared to 11,71,369 metric tonne during the corresponding period last year. Export remained lower because of soybean crush margins in India are currently squeezed by pressure on meal prices. Additionally, lower crushing of soybean also pushing higher import of crude soybean oil in India. We expect lower soymeal export in January and February too as Indian soymeal prices are much higher as compared to Argentina and Brazil FOB prices.

Additionally, export of oilmeals for the month of Jan'2022 provisionally reported at 1,76,815 tonne compared to 5,01,552 tonne last year same period i.e. down by 65%. The overall export of oilmeals during April – Jan'2022 is reported at 19,43,888 tonne compared to 29,69,116 tonne i.e. down by 35%.

According to USDA Feb'22 report, India's 2021/22 soymeal production is estimated higher at 8 million tonnes vs 7.6 million tonnes last year while ending stock is estimated higher at 6.37 lakh tonnes vs 6.67 lakh tonne previous month while last year it was 3.82 lakh tonnes.

Outlook: This week, Soybean meal prices are expected to continue trade range bound with firm bias in the range of 55,000-60,000/ MT desite tight crushing and weak export demand due to incometitive prices in global markets.

Monday, February 21, 2022

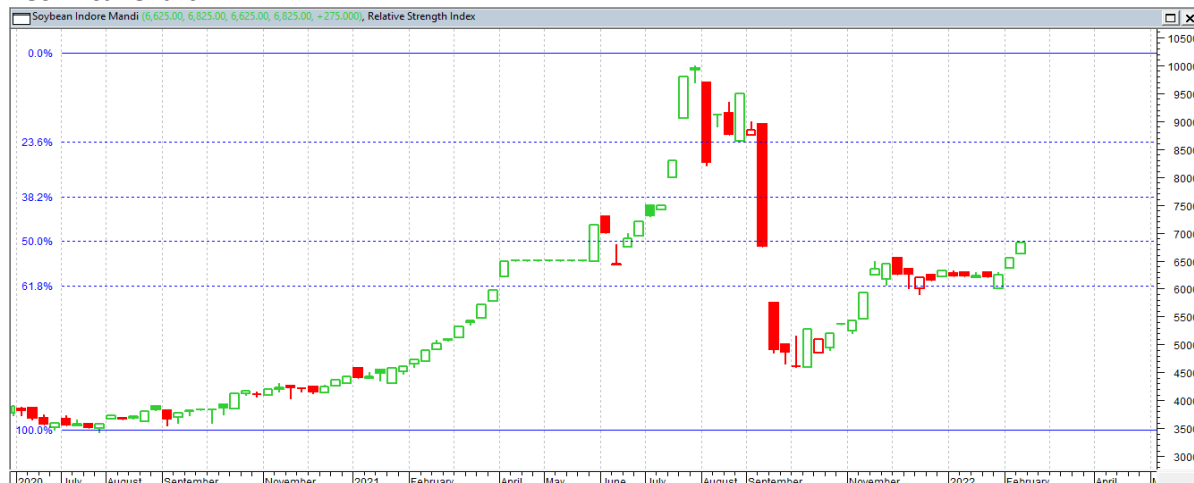
Technical Analysis

(Based on Indore Mandi prices)

SOYBEAN – Technical Outlook

Soybean Indore Spot -Weekly time frame

Technical Chart:



Technical Commentary:

This week soybean prices at Indore mandi went up and closed at 6825 as compared to previous week closing at 6550.

61.8% Fibonacci level of the previous up move has emerged as a good support and 50% Fibonacci level is near resistance.

Immediate resistance is seen at 6900, characterized by multiple recent tops, and the next resistance is seen at 7600.

Recommendation-

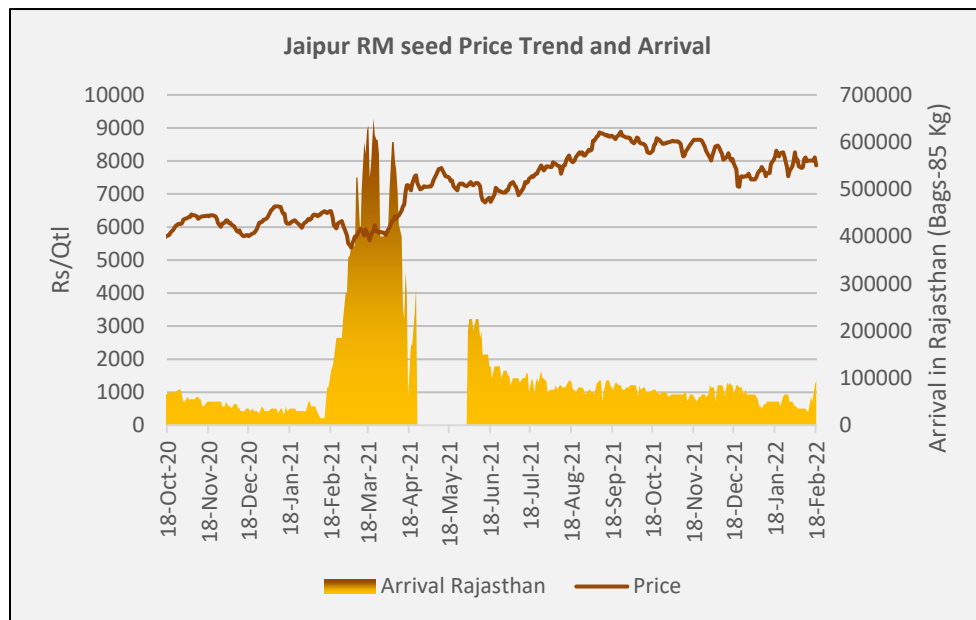
Market participants are recommended to Buy near of 6400-6500 level and sell near resistance level of 6700-6900.

Monday, February 21, 2022

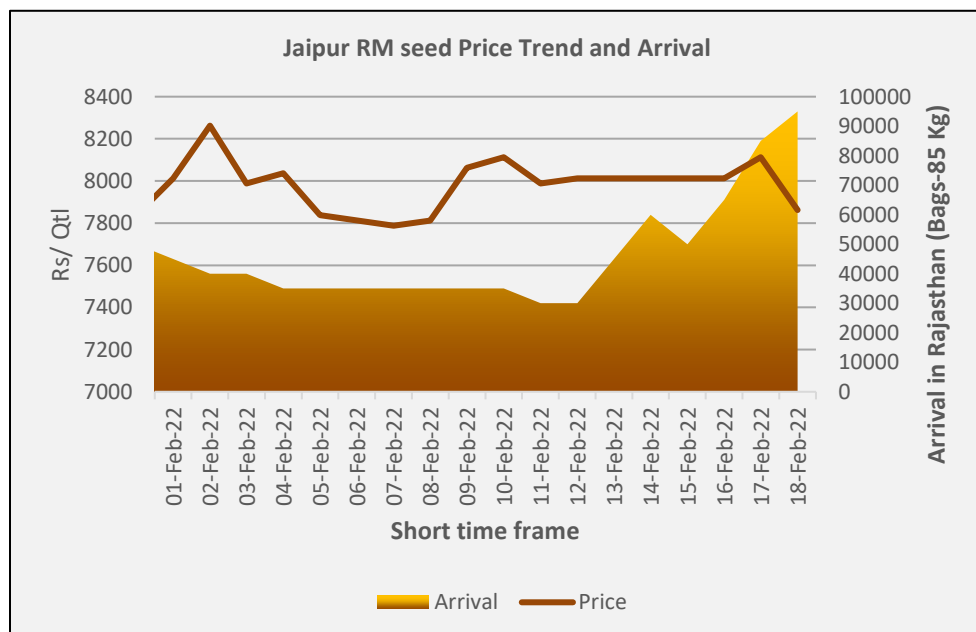
Rapeseed - Mustard Seed

This week RM seed Jaipur average prices remained sideways and went slightly up amid new crop arrivals and record acreage in the country.

Rapeseed Mustard weekly average price remained sideways and went up by 0.9% to Rs.8,004/Qtl, as compared to Rs 7,933 /Qtl last week. The market made a low of 7,863 and high of 8,113 during the week. In Sri Ganganagar, the weekly average prices of rapeseed oilcake went up by 3.17% to Rs 2,992/Qtl from previous week at Rs. 2,900/qtl.



This week in Rajasthan, total mustard arrivals stood at 3.85 lakh bags as compared to previous week at 2.05 lakh bags. New mustard crop arrivals has begun. While all India arrivals stood at 13.10 lakh bags vs 7.3 lakh bags previous week.



As per Agriwatch estimates, in 2022-2023 all India RM seed production at 107 lakh tonnes.

Monday, February 21, 2022

As per 2nd Advance Estimates, released by the Department of Agriculture and Farmers Welfare, the estimated production of RM seed during 2021-22 is 114.59 lakh tonne vs 102.1 lakh tonne last year.

According to GOI, as on 04th Feb'22, All India Mustard sowing is up by 25.3% at 91.63 Lakh Ha compared with 73.12 Lakh Ha last year.

According to Solvent extractor association of india, India's exports for rapeseed meal during April-Jan'2022 was down 26% at 7,29,757 metric tonne compared to 9,90,955 metric tonne during the same period previous marketing season.

The export of rapeseed meal in Jan'22 is reported at 16,164 metric tonne against 74,240 metric tonne during the last year same period i.e. down by 78%. Rapeseed meal export remained lower due to less availability of seeds for crushing.

According to Central Organization for Oil Industry and Trade (COOIT) production of the mustard to increase to a record 100-110 lakh tonnes this season.

	Normal area	As on 04th Feb'22		
		2021-22	2020-21	% Change
Rajasthan	25.51	35.27	25.66	37.5%
Uttar Pradesh	6.95	14.17	12.33	14.9%
Madhya Pradesh	6.91	11.72	7.81	50.1%
Haryana	5.63	7.67	6.10	25.7%
West Bengal	5.50	6.09	5.85	4.1%
Gujarat	1.96	3.40	2.15	58.5%
Assam	2.89	3.20	3.16	1.0%
Jharkhand	2.60	4.05	4.31	-6.0%
Bihar	0.82	1.52	1.50	1.3%
Chattisgarh	0.44	1.41	1.40	1.1%
Odisha	0.08	1.11	1.05	5.8%
Jammu And Kashmir	0.48	0.31	0.29	7.7%
Arunachal Pradesh	0.28	0.28	0.28	0.0%
Uttarakhand	0.15	0.18	0.18	0.0%
Nagaland	0.28	0.24	0.26	-7.8%
Sikkim	0.03	0.03	0.03	0.0%
Total	61.55	91.63	73.12	25.3%
Data source-GOI		Area in Lakh ha		

International

Canada canola production is down by 31% as compared to five-year average with yield down by 32% even as area was 1% up as compared to the five-year average. We estimate that there will be very little canola left for export in Canada.

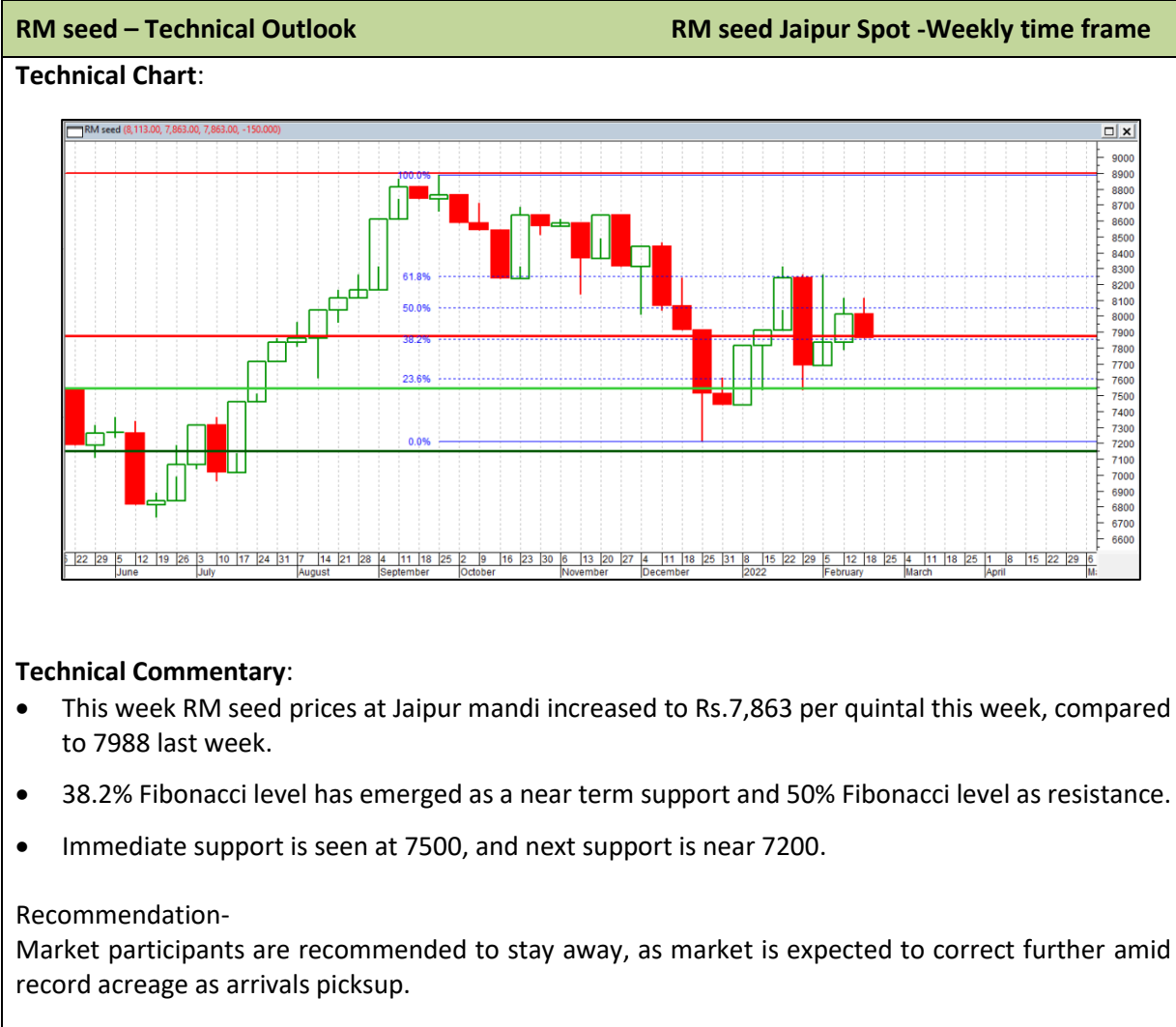
USDA in its Feb'22 report, estimates Canadian Canola at 12.6 MMT Vs 19.48 MMT in the previous year, China at 14 MMT (same as the last year), EU at 17.25 MMT Vs 16.28 MMT in the previous year. It also estimated that Canada canola exports are down to 5.3 MMT from 10.51 MMT last year.

Lower canola production in Canada has disrupted exports and major importers are likely to turn to Australia.

Monday, February 21, 2022

Technical Analysis

(Based on Jaipur Mandi prices)



Outlook: RM Seed is expected to trade range bound in the range of 7500-8000 with weak bias amid new crop arrivals.

Monday, February 21, 2022

Annexure

Soy DOC Rates at Different Centers				
Centres	Ex-factory rates (Rs/ton)			Parity To
	18-Feb-22	12-Feb-22	Change	
Indore - 45%, Jute Bag	56000	55000	1000	Gujarat, MP
Kota - 45%, PP Bag	59700	58200	1500	Rajasthan, Del, Punjab, Haryana
Dhulia/Jalna - 45%, PP Bag	58500	58000	500	Mumbai, Maharashtra
Nagpur - 45%, PP Bag	56500	56000	500	Chattisgarh, Orissa, Bihar, Bangladesh, AP, Kar, TN
Nanded	57700	56500	1200	Andhra, AP, Kar, TN
Latur	56000	57500	-1500	-
Sangli	54500	54000	500	Local and South
Solapur	53500	53200	300	Local and South
Akola – 45%, PP Bag	56500	55000	1500	Andhra, Chattisgarh, Orissa, Jharkhand, WB
Hingoli	57500	55500	2000	Andhra, Chattisgarh, Orissa, Jharkhand, WB
Bundi	59500	58000	1500	-

Soy DOC at Ports			
Centers	Port Price		
	17-Feb-22	11-Feb-22	Change
Kandla (FOR) (INR/MT)	58000	57000	1000
Kandla (FAS) (USD/MT)	780	775	5
CNF Indonesia – Yellow SBM (USD/MT)	-	-	-

Rapeseed Meal	17-Feb-22	11-Feb-22	Change
FAS Kandla (USD/MT)	308	320	-12
FOR Kandla (Rs/MT)	23000	23200	-200
FOR Mundra (Rs/MT)	-	-	-
CNF Indonesia (USD/MT)	350	364	-14

Monday, February 21, 2022

International Soy DOC			
Argentina FOB USD/MT	17-Feb-22	11-Feb-22	Change
Soybean Pellets	501	508	-7
Soybean Cake Flour	501	508	-7
Soya Meal	-	-	-
Soy Expellers	-	-	-

Sunflower (DOC) Rates	Ex-factory rates (Rs/ton)		
Centers	18-Feb-22	12-Feb-22	Change
Adoni	30500	30500	Unch
Khamgaon	-	-	-
Parli	-	-	-
Latur	30000	30000	Unch

Groundnut Meal (Rs/MT)	18-Feb-22	12-Feb-22	Change
Basis 45%, Saurashtra	41000	38500	2500
Basis 40%, Saurashtra	36000	33500	2500
GN Cake, Gondal	43000	39000	4000

Mustard DOC	18-Feb-22	12-Feb-22	Change
Jaipur (Plant delivery)	24000	22500	1500
Kandla (FOR Rs/MT)	24000	23500	500

Mumbai Oil Meal Quotes:			
Rs/M.T.	18-Feb-22	12-Feb-22	Change
G.N. Extr (45%)	41000	38500	2500
Kardi Extr	-	-	-
Undec Cottonseed Exp	36500	36000	500
Rice Bran Extr.	-	-	-
Sunflower Extr.	31500	32000	-500
Rapeseed Extr.	-	-	-
Soymeal 48%	58957	57391	1566
Castor Extr.	12650	12550	100

MSP of Rabi Oilseeds for Marketing Season 2022-23- GOI

Sl. No	Crops	MSP for Rabi 2022-23	MSP for Rabi 2021-22	Increase in MSP (Absolute)
1	Rapeseed-mustard	5050	4,650	400
2	Safflower	5441	5,327	114

The Cabinet Committee on Economic Affairs (CCEA) chaired by the Hon'ble Prime Minister Shri Narendra Modi has approved the increase in the Minimum Support Prices (MSPs) for all mandated Rabi crops for marketing season 2022-23.

Government has increased the MSP of Rabi crops for marketing season 2022-23, to ensure remunerative prices to the growers for their produce. This increase in MSP is in line with the recommendations of Swaminathan Commission.

Among the Rabi oilseeds the MSP for rapeseed-mustard has been increased to Rs. 5,050 per quintal for marketing season 2022-23 from Rs. 4,650 per quintal in 2021-22 an increase of Rs. 400 a quintal.

The MSP of safflower to Rs. 5,441 a quintal from earlier Rs. 5,321 per quintal an increase of Rs 114 per quintal.

MSP of Kharif Oilseeds for Marketing Season 2021-22 - GOI

Sl. No	Crops	MSP for Kharif 2021-22	MSP for Kharif 2020-21	Increase in MSP (Absolute)
1	Groundnut	5550	5275	275
2	Sunflower seed	6015	5885	130
3	Soybean (yellow)	3950	3880	70
4	Sesamum	7307	6855	452
5	Nigerseed	6930	6695	235

The Cabinet Committee on Economic Affairs (CCEA) chaired by the Hon'ble Prime Minister Shri Narendra Modi has approved the increase in the Minimum Support Prices (MSPs) for all mandated Kharif crops for marketing season 2021-22.

Government has increased the MSP of Kharif crops for marketing season 2020-21, to ensure remunerative prices to the growers for their produce.

Among the Kharif oilseeds the MSP for groundnut has been increased to Rs. 5500 per quintal for marketing season 2020-21 from Rs.5275 per quintal in 2019-20 an increase of Rs.275 a quintal.

The MSP of sunflower to Rs. 6015 a quintal from earlier Rs. 5885 per quintal an increase of Rs 130 per quintal, Soybean-yellow to Rs. 3950 a quintal to Rs. 3880 per quintal last season, an increase of Rs. 70 a quintal, Sesamum to Rs. 7307 a quintal from 6855 earlier, an increase of Rs. 452 a quintal and the MSP of Nigerseed have been increased to Rs. 6930 a quintal from Rs. 6695 a quintal earlier, increase of Rs 235 per quintal.

Among all the Kharif crops, the highest increase in MSP is proposed for sesamum (Rs 452 per quintal) followed by Tur (Rs 300 per quintal) and Urad (Rs 300 per quintal). The differential remuneration is aimed at encouraging crop diversification.

Monday, February 21, 2022

India's soybean and Groundnut production seen higher in 1st Adv Est. for 2021-22-

The 1st Advance Estimates of production of soybean and groundnut for 2021-22 have been released by the Department of Agriculture, Cooperation and Farmers Welfare on 21st September, 2021. The assessment of production of different crops is based on the feedback received from States and validated with information available from other sources.

- Soyabean – 12.72 million tonnes vs 11.2 million tons last year.
- Groundnut – 8.25 million tonnes vs 8.55 million tons last year.

Total kharif oilseeds production in the country during 2021-22 is estimated at 23.39 million tonnes which is higher by 2.96 million tonnes than the average oilseeds production of 20.42 million tonnes.

India's Oilseeds Production Seen at 361.0 Lakh Tonnes vs 365.7 Lakh Tonnes in 4nd Adv Est. for 2020-21- GOI

The 4nd Advance Estimates of production of oilseeds for 2020-21 have been released by the Department of Agriculture, Cooperation and Farmers Welfare on 11th Aug, 2021. The assessment of production of different crops is based on the feedback received from States and validated with information available from other sources.

The revised estimated production of major Oilseeds during 2020-21 is as under:

Total Oilseeds production in the country during 2020-21 is estimated at record 36.10 million tonnes which is higher by 2.88 million tonnes than the production during 2019-20. Further, the production of oilseeds during 2020-21 is higher by 5.56 million tonnes than the average oilseeds production of 30.55 million tonnes.

- Groundnut – 102.1 lakh tonnes vs 99.52 lakh tonnes in 2019-20.
- Castorseed – 17.76 lakh tonnes vs 18.42 lakh tonnes
- Sesamum – 8.12 lakh tonnes vs 6.58 lakh tonnes
- Nigerseed – 0.41 lakh tonnes vs 0.41 lakh tonnes (No difference)
- Soybean – 129 lakh tonnes vs 112.26 lakh tonnes
- Sunflower – 2.24 lakh tonnes vs 2.13 lakh tonnes
- Rapeseed-mustard – 10.11 lakh tonnes vs 91.24 lakh tonnes
- Linseed – 1.40 lakh tonnes vs 1.21 lakh tonnes
- Safflower – 0.34 lakh tonnes vs 0.44 lakh tonnes.

Sown Area – Kharif Oilseeds, India 2021-22

In the latest official Kharif oilseeds planting report by the Ministry of Agriculture, the total coverage area under Kharif oilseeds is reported at 193.95 lakh hectares, an decrease by 1.27% from 196.45 lakh ha in the corresponding period of last year. Of the major oilseeds, soybean sowing is reported up by 0.47% at 121.77 lha compared to 121.20 lha during the corresponding period of last year, groundnut at 49.14 lha vs 50.98 lha, sesamum 13.31 lha vs 13.99 lha, castor seed at 6.96 lha vs 7.34 lha and niger at 1.13 lha vs 1.57 lha, during the same period last year. We feel country's final area under oilseeds to be above normal by 5-7% this season

As on 17th September'21

Area in Lakh Hectares

Source- GOI

	Normal Area	2019-20	2020-21	% Change
Groundnut	41.7	50.98	49.14	-3.60%
Soybean	112.88	121.2	121.77	0.47%
Sunflower	1.42	1.23	1.51	23.20%
Sesamum	13.13	13.99	13.31	-4.91%
Niger	1.95	1.57	1.13	-28.06%
Castor	8.95	7.34	6.96	-5.13%
Total Oilseeds	180.03	196.45	193.95	-1.27%

Monday, February 21, 2022

Sown Area – Rabi Oilseeds, India 2021-22

In the latest official rabi oilseeds planting report, by the Ministry of Agriculture, the total coverage area under rabi oilseeds is reported at 102.79 lakh hectares, up 23% from 83.69 lakh ha in the corresponding period of last year. Of the major oilseeds, rapeseed-mustard sowing is reported up by 25% at 91.63 lha compared to 73.12lha during the corresponding period of last year. Groundnut at 5.27 lha vs 5.18 lha, safflower at 0.76 lha vs 0.58 lha, sunflower at 1.19 lha vs 1.09 lha, linseed at 2.95 lha vs 2.80 lha.

Area in Lakh Hectares

<i>Crop</i>	<i>Normal Area (5 Year Avg.)</i>	<i>As on 04th Feb 2022</i>	<i>As on 04th Feb 2021</i>	<i>% Change</i>
Rapeseed/Mustard	61.55	91.63	73.12	25%
Groundnut	7.05	5.27	5.18	2%
Safflower	0.9	0.76	0.58	30%
Sunflower	1.86	1.19	1.09	10%
Linseed	2.53	2.95	2.80	6%
Others	0.04	0.10	0.09	11%
Total Oilseeds	73.9	102.79	83.69	23%

Source: MoA, GOI

Disclaimer

The information and opinions contained in the document have been compiled from sources believed to be reliable. The company does not warrant its accuracy, completeness and correctness. Use of data and information contained in this report is at your own risk. This document is not, and should not be construed as, an offer to sell or solicitation to buy any commodities. This document may not be reproduced, distributed or published, in whole or in part, by any recipient hereof for any purpose without prior permission from the Company. IASL and its affiliates and/or their officers, directors and employees may have positions in any commodities mentioned in this document (or in any related investment) and may from time to time add to or dispose of any such commodities (or investment). Please see the detailed disclaimer at <http://www.agriwatch.com/Disclaimer.asp>
 © 2022 Indian Agribusiness Systems Limited