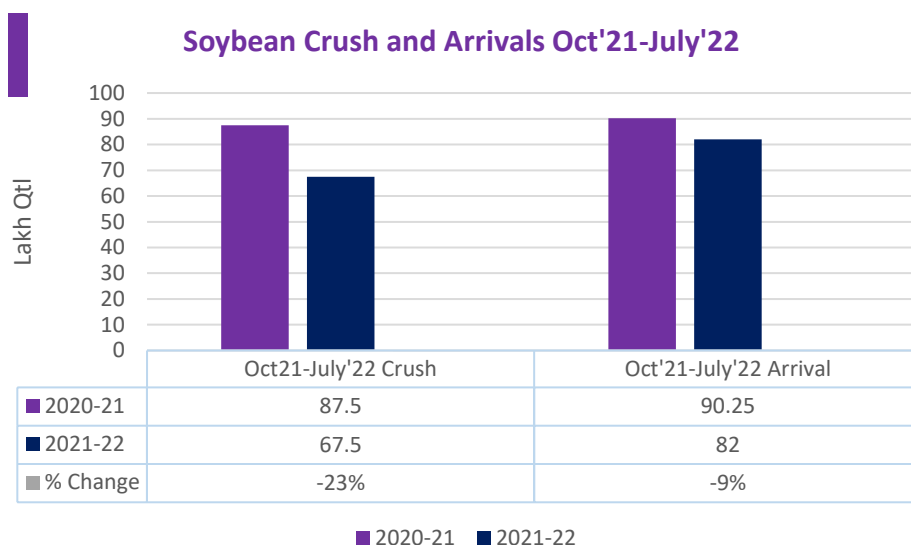


Oilseeds Domestic Fundamentals:
Today's Update-

Today in Indore, soybean plant prices went marginally up by 0.78% to Rs. 6,450/qtl. In other cash markets too, soybean traded with firm bias amid shrink in arrivals. Soybean (plant delivery, Indore) prices are expected to trade with weak bias in the range of 6000-6500/qtl levels in the near-term tracking soy meal import and weak demand from crushers amid squeeze in crush margin.

According to SOPA, India's Oct-Jul soy arrivals fell to 82 Lakh tonnes from 90.25 Lakh tonnes year ago, crushing shrank to 67.50 Lakh tonnes from 87.50 Lakh tonnes year ago while stocks with millers, traders, farmers swell to 40.52 Lakh tonnes from only 8.82 Lakh tonnes a year ago. Low Soymeal export demand and squeeze in crush margin resulted into low crushing.



Soybean Sowing Updates: Cumulative rainfall departure from 1st June'22 to 05th Aug'22 recorded above average by 20% in Maharashtra, 40% in Rajasthan, 4% in Madhya Pradesh. As of Aug 05th, '22, all India Kharif soybean sowing progress is up by 2% to 117.51 lakh hectares as compared to 115.10 lakh hectares last year in the same period. Agri Watch expects soybean acreage to decline by 5–8% due to acreage shift to cotton and maize.

State wise Soybean sowing progress as on 05th Aug'22 (Lakh Ha)				
State	2022	2021	% Change	Cumulative Rainfall Departure (%) 1st June to 07th Aug'22
Maharashtra	47.10	44.49	6%	20%
Madhya Pradesh	49.83	51.67	-4%	4%
Rajasthan	11.33	10.03	13%	40%
Karnataka	4.13	3.78	9%	36%
Telangana.	1.41	1.40	1%	86%
Others	3.70	3.74	-1%	
Total	117.51	115.10	2%	

Major Soybean growing districts and cumulative rainfall (Period:01-06-2022 To 07-08-2022)				
	ACTUAL (mm)	NORMAL (mm)	% DEP.	CAT.
Madhya pradesh	556.6	533.6	4%	N
Dewas	725.1	513	41%	E
Vidisha	763.8	583.1	31%	E
Rajgah	636.9	501.9	27%	E
Shajahpur	632.2	507.4	25%	E
Indore	499.8	481	4%	N
Ashok nagar	498.6	485.7	3%	N
Ujjain	479.1	497.7	-4%	N
Mandsaur	425.6	461.9	-8%	N
Dhar	418.6	461.3	-9%	N
Ratlam	431.2	504.9	-15%	N
West Madhya Pradesh	586.3	494.2	19%	N
Maharastra	734.1	612.5	20%	E
Nagpur	813.1	571.9	42%	E
Yavatmal	661.1	504.5	31%	E
Amrawati	525.7	490.7	7%	N
Washim	508.9	480.6	6%	N
Buldhana	394.5	384.7	3%	N
Akola	387	423.3	-9%	N
Vidarbha	713.3	566.6	26%	E
Latur	576.7	350.8	64%	LE
Parbhani	549.5	383	43%	E
Jalna	392.9	329	19%	N
Hingoli	487.6	456	7%	N
Marathwada	533.5	346.6	54%	E
Rajasthan	357.4	255.8	40%	E
Kota	641.1	421.5	52%	E
Bundi	475.7	374	27%	E
Jhalawar	598.7	489.7	22%	E
Baran	553.9	481.4	15%	N
Chittorgarh	451.1	402.4	12%	N
Pratapgarh	508.2	500.3	2%	N
East Rajasthan	438.8	359.9	22%	E

Source: IMD

International market update:

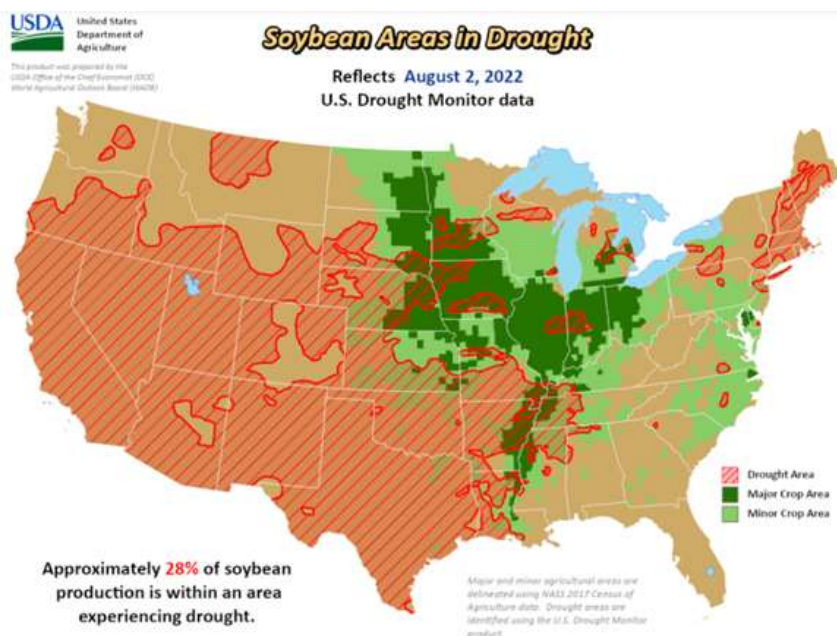
Uptrend in CBOT Soy futures continued for fifth consecutive session. On Thursday, due to likely hot and weather conditions in parts of the US Midwest impacting yields. Currently, 28% of the Soybean production is within an area experiencing drought.

USDA has slashed USA's 2022-23 Soybean production estimate in its June 22 report, by -2.91% to 122 MMT as compared to 126 MMT previous month. However, Soy production is still up by 2% as compared to previous year. Whereas Brazil's 2022-23 Soybean production estimate kept unchanged at 149 MMT MoM and 18% up as compared to last year. Argentina's 2022-23 Soybean production estimates too kept unchanged at 51 MMT as compared to previous month estimates whereas 16% up as compared to previous year. India's 2022-23 Soybean production kept unchanged as compared to previous month estimates while 3% lower production estimates at 11.5 MMT as compared to 11.9 MMT previous year.

Overall, there is 1% of production cut at 391 MMT as compared to 395 MMT previous month estimates. However, there is an 11% increase in total soybean production estimates as compared to previous year.

Overall global supply seems comfortable, however crop condition in USA, crude oil prices and export demand from China likely to set the tone of the market.

According to USDA's latest report, 3% of Soybean crop is in very poor condition Vs 3% previous week, 8% is in poor condition Vs 8% previous week, 29% in fair condition Vs 30% in previous week, 49% in good condition Vs 49% in previous week and 11% in excellent condition Vs 10% in previous week.



RM seed

Today's Update-

Today Jaipur RM seed prices went marginally up by 0.4% at Rs. 7,000/qtl. amid subdued demand in the cash market. In Newai, Rajasthan most of the expellers are shut and only kachhi ghani is operational amid disparity in crushing. Mustard is currently premium over competing oils such as soy oil and CPO. Hence, there is weak demand of Mustard in the market and has kept RM seed prices under pressure. RM seed prices are expected to trade with weak bias in the range of 6,800-7200 in near term tracking weak demand from crushers.

Previous Updates-

For 2022-23, the area seeded to canola is expected to decrease by 7% to 8.5 million hectares (Mha) based on Statistics Canada's Seeding Intentions Survey.

Statistics Canada has pegged Canada's 2022 canola plantings at 20.9 million acres, down 7% from last year, 6% below the five-year average and lighter than analyst expectations of 22.1 million.

According to Agriculture and Agri-Food Canada's (AAFC), Demand for Canadian Canola remains firm on a strong world oilseed crush and high prices for competing oilseeds and vegetable oils. Disruption of Black Sea exports of sunflower seed oil as a result of the Russian invasion of Ukraine is tightening world supplies and supporting world prices. Domestically, the processing of canola is estimated to fall to 8.5 Mt, a drop of 18% from last year, while exports are expected to fall by 49% to 5.4 Mt, as commercial buyers outbid exporters for the tight supplies. For the crop year, the major importers of Canadian canola to-date are China, Japan, Mexico and the European Union.

Groundnut:

Low ending stock, lag in sowing progress, good domestic groundnut oil demand and rebound in groundnut oil export demand kept Groundnut bold 60/70 prices elevated. 60/70 Groundnut bold average prices are likely to trade with firm bias in the range of INR 9,500-10,000/Qtl. in the short run.

As on 05th Aug'22 All India Kharif Groundnut sowing progress is lagging by 7% to 41.09 Lakh hectare as compared to 44.39 Lakh hectare last year in the same period. From 1st June'22 to 08th

Statewise Groundnut sowing progress as on 05th Aug'22 (Lakh Ha)				
	2022	2021	% Change	Cumulative Rainfall Departure (%) 1st June to 08th Aug'22
Gujarat	16.72	18.94	-12%	32%
Rajasthan	7.84	7.49	5%	40%
Karnataka	2.66	3.66	-27%	37%
Andhra Pradesh	4.07	4.08	0%	30%
Others	9.80	10.22	-4%	
Total	41.09	44.39	-7%	

Aug'22 cumulative rainfall departure is up by 32% in Gujarat, 40% in Rajasthan, 37% in Karnataka and 30% in Andhra Pradesh. AgriWatch expects Groundnut 2022-23 Kharif sowing acreage is likely to decline by 8-12%. Acreage is likely to shift to cotton on lucrative prices.

Major Groundnut growing districts and cumulative rainfall (Period:01-06-2022 To 07-08-2022)

	ACTUAL (mm)	NORMAL (mm)	%DEP.	CAT.
Gujarat	577.5	433.6	33%	E
Kutchh	501.4	235.2	113%	LE
Dwarka	642.4	361.7	78%	LE
Porbandar	678.5	465.2	46%	E
Gir somnath	856.6	613.1	40%	E
Junagarh	755	605.2	25%	E
Amreli	419.5	368.1	14%	N
Jamnagar	454.2	404.3	12%	N
Morbi	369.4	337	10%	N
Rajkot	444.3	408.4	9%	N
Surrendra nagar	319	308.2	4%	N
Bhavnagar	334	353.7	-6%	N
SAURASHTRA & KUTCH	485.9	334.2	45%	E
Banaskatha	453.4	360.2	26%	E
Saberkantha	550.1	495.3	11%	N
Aravali	515.1	484.6	6%	N
Rajasthan	357.4	255.8	40%	E
Bikaner	345.5	158.3	118%	LE
Kota	641.1	421.5	52%	E
Jaipur	424.5	316.9	34%	E

Oilseed Prices at Key Spot Markets:

Commodity / Centre	Prices (Rs/Qtl)				Change
Soybean	13-Aug-22		12-Aug-22		
	Low	High	Low	High	
Indore –Plant	6250	6450	6200	6400	50
Indore–Mandi	5950	6150	5900	6100	50
Nagpur-Plant	6050	6350	6000	6290	60
Nagpur – Mandi	5215	6150	5250	6100	50
Latur – Mandi	6280	6470	6190	6465	5
Akola – Mandi	5400	6275	5215	6350	-75
Kota-Plant	6350	6550	6250	6450	100
Kota – Mandi	6100	6250	5900	6150	100
Bundi-Plant	6220	6320	6150	6240	80
Bundi-Mandi	5920	6220	5850	6140	80
Baran-Plant	6200	6450	6100	6350	100
Baran-Mandi	6100	6250	Closed	Closed	-
Bhawani Mandi Jhalawar–Plant	6100	6330	6000	6250	80
Jhalwar-Mandi	6000	6200	5900	6120	80
Rapeseed/Mustard					
Jaipur-(Condition)	6975	7000	6950	6975	25
Alwar-(Condition)	6800	6850	6700	6750	100
Sri Ganganagar-(Non-Condition)	6325	6375	6200	6250	125
New Delhi–(Condition)	6675	6700	6625	6650	50
Kota-(Condition)	6400	6500	6250	6350	150
Agra-(Condition)	7000	7095	Closed	Closed	-
Neewai-(Condition)	6600	6800	6450	6650	150
Hapur (UP)-(Condition)	6750	6800	Closed	Closed	-
Groundnut Seed					
Rajkot	NA	NA	NA	NA	-
Sunflower Seed					
Gulbarga	NA	NA	NA	NA	-
Latur	6600	6700	6600	6700	Unch
Sholapur	6600	6700	6600	6700	Unch
Soybean Prices are in INR/qtl. (1 bag=90 kg). Mandi prices – Loose, Mustard Seed Prices are in INR/qt (1 bag=85 kg) C – Condition (42%), *Groundnut seed in Rs/20 kg, Sunflower Seed in Rs/qtl.					

Oilseed Arrivals in Key Centers:

Commodity / Centre	Arrivals in Bags/Qtl		Change
Soybean	13-Aug-22	12-Aug-22	
Madhya Pradesh	40000	40000	Unch
Maharashtra	50000	50000	Unch
Kota	12000	14000	-2000
Bundi (Raj)	300	600	-300
Baran (Raj)	1700	Closed	-
Jhalawar (Raj)	300	500	-200
Rapeseed/Mustard			
Rajasthan	80000	85000	-5000
Alwar	1500	1500	Unch
Sri Ganganagar	900	800	100
Kota	600	800	-200
Groundnut Seed			
Rajkot (Gujarat)	NA	NA	-
Sunflower Seed			
Sholapur (Maharashtra)	700	700	Unch

Other Oilseed Prices at Mumbai (INR/100 Kg):

Oilseeds	13-Aug-22	12-Aug-22	Change
Groundnut Kernel	8300	8250	50
Gr. Bolds 60/70	9850	9850	Unch
Gr. Javas 60/70	10050	10050	Unch
Gr Javas 70/80	10650	10650	Unch
Gr.Javas 80/90	10100	10100	Unch
KardiSeed 2% Exp Qly	5300	5300	Unch
Sesame White 98/2/1 FM	10000	10000	Unch
Whitish 95/5/FFA/1FM	9800	9800	Unch
Brown 48/2 FFA/4 FM	9700	9700	Unch
Brown 48/3 FFA/4 FM	9300	9300	Unch
Brown 48/4 FM/* No FFA Guarantee	8700	8700	Unch
Sunflower Seed	7000	7000	Unch
Niger Seed (4% FM)	8000	8000	Unch

Disclaimer

The information and opinions contained in the document have been compiled from sources believed to be reliable. The company does not warrant its accuracy, completeness and correctness. Use of data and information contained in this report is at your own risk. This document is not, and should not be construed as, an offer to sell or solicitation to buy any commodities. This document may not be reproduced, distributed or published, in whole or in part, by any recipient hereof for any purpose without prior permission from the Company. IASL and its affiliates and/or their officers, directors and employees may have positions in any commodities mentioned in this document (or in any related investment) and may from time to time add to or dispose of any such commodities (or investment). Please see the detailed disclaimer at <http://www.agriwatch.com/disclaimer.php> © 2022 Indian Agribusiness Systems Limited