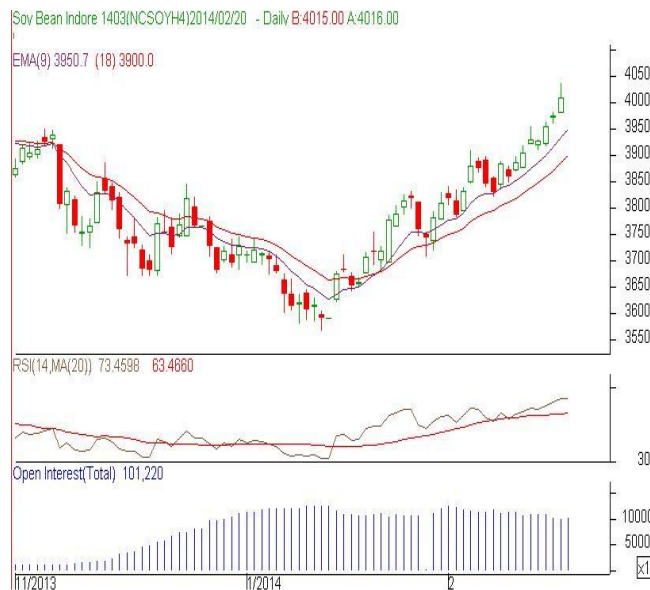


**Commodity: Soybean**  
**Contract: Mar**
**Exchange: NCDEX**  
**Expiry: Mar 20<sup>th</sup>, 2014**
**SOYBEAN – Technical Outlook**
**Technical Commentary:**

- Candlestick chart pattern reflects gains. However, market may consolidate in the near term.
- Prices closed above 9-day and 18-day EMA, indicating firm tone in near-term.
- MACD is rising in positive territory.
- RSI and stochastic are heading upwards in neutral territory.


**Strategy: Buy**

Intraday Supports & Resistances			S1	S2	PCP	R1	R2
Soybean	NCDEX	Mar	3962	3932	4010.50	4065	4085
Intraday Trade Call			Call	Entry	T1	T2	SL
Soybean	NCDEX	Mar	Buy	Above 4010	4020	4025	4004

\* Do not carry-forward the position next day.

**Commodity: Rapeseed/Mustard**  
**Contract: Apr**
**Exchange: NCDEX**  
**Expiry: Apr 18th, 2014**
**RM SEED – Technical Outlook**
**Technical Commentary:**

- Candlestick chart pattern reveals gains in the market. However, market may consolidate in the near term.
- The prices above 18-day EMA, indicating firmness in near-term.
- MACD is easing in negative territory.
- RSI and stochastic are rising in neutral region.


**Strategy: Buy**

Intraday Supports & Resistances			S1	S2	PCP	R1	R2
RM Seed	NCDEX	Apr	3325	3300	3384	3425	3455
Intraday Trade Call			Call	Entry	T1	T2	SL
RM Seed	NCDEX	Apr	Buy	Above 3378	3390	3395	3371

\* Do not carry-forward the position next day.

**Disclaimer**

The information and opinions contained in the document have been compiled from sources believed to be reliable. The company does not warrant its accuracy, completeness and correctness. Use of data and information contained in this report is at your own risk. This document is not, and should not be construed as, an offer to sell or solicitation to buy any commodities. This document may not be reproduced, distributed or published, in whole or in part, by any recipient hereof for any purpose without prior permission from the Company. IASL and its affiliates and/or their officers, directors and employees may have positions in any commodities mentioned in this document (or in any related investment) and may from time to time add to or dispose of any such commodities (or investment). Please see the detailed disclaimer at <http://www.agriwatch.com/Disclaimer.asp>  
 © 2014 Indian Agribusiness Systems Pvt Ltd.