

Commodity: Soybean  
Contract: Oct

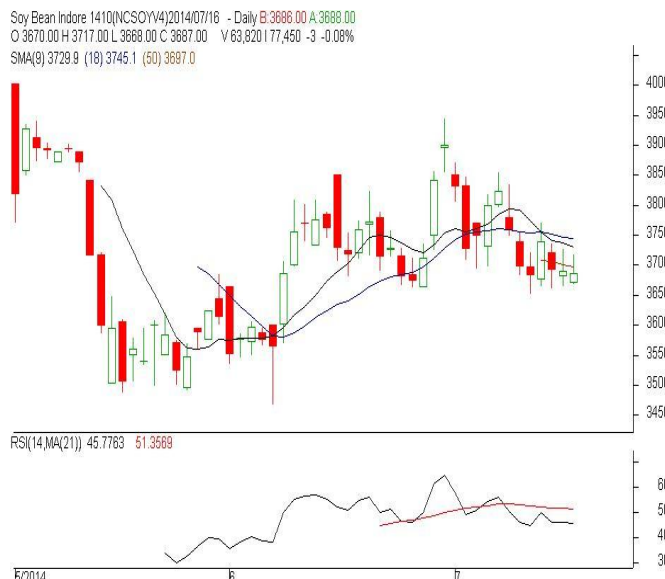
Exchange: NCDEX  
Expiry: Oct 20<sup>th</sup>, 2014

### SOYBEAN – Technical Outlook

#### Technical Commentary:

- Candlestick chart pattern reveals consolidation in the prices.
- Prices closed below 9-day EMA, indicating weak tone in near-term.
- MACD is falling in positive territory.
- RSI is rising in neutral region

*The soybean prices are likely to trade range bound on Thursday's session.*



#### Strategy: Buy

Intraday Supports & Resistances			S1	S2	PCP	R1	R2
Soybean	NCDEX	Oct	3628	3608	3687	3745	3762
Intraday Trade Call			Call	Entry	T1	T2	SL
Soybean	NCDEX	Oct	Buy	Above 3670	3695	3698	3655

\* Do not carry-forward the position next day.

**Commodity: Rapeseed/Mustard**  
**Contract: Aug**
**Exchange: NCDEX**  
**Expiry: Aug 20, 2014**
**RM SEED – Technical Outlook**
**Technical Commentary:**

- RM seed prices featured correction. However, prices closed above 9-day and 18-day EMA, indicating firm tone in near to medium-term.
- MACD is rising in positive territory.
- RSI and stochastic are rising in neutral zone.

*The RM seed prices are expected to ease in Thursday's session.*


**Strategy: Wait**

Intraday Supports & Resistances			S1	S2	PCP	R1	R2
RM Seed	NCDEX	Aug	3565	3540	3611	3645	3660
Intraday Trade Call			Call	Entry	T1	T2	SL
RM Seed	NCDEX	Aug	Wait	-	-	-	-

\* Do not carry-forward the position next day.

**Disclaimer**

The information and opinions contained in the document have been compiled from sources believed to be reliable. The company does not warrant its accuracy, completeness and correctness. Use of data and information contained in this report is at your own risk. This document is not, and should not be construed as, an offer to sell or solicitation to buy any commodities. This document may not be reproduced, distributed or published, in whole or in part, by any recipient hereof for any purpose without prior permission from the Company. IASL and its affiliates and/or their officers, directors and employees may have positions in any commodities mentioned in this document (or in any related investment) and may from time to time add to or dispose of any such commodities (or investment). Please see the detailed disclaimer at <http://www.agriwatch.com/Disclaimer.asp>  
 © 2014 Indian Agribusiness Systems Pvt Ltd.