

Commodity: Soybean
Contract: Nov
Exchange: NCDEX
Expiry: Nov 20th, 2014
SOYBEAN – Technical Outlook
Technical Commentary:

- Candlestick chart pattern indecision in the market.
- Prices closed above 9-day and 18-day EMA, indicating firm tone in near-term.
- MACD is rising in positive territory.
- RSI is flattening in neutral region while stochastic is easing in the neutral zone.

The soybean prices are likely to rise on Monday's level session.


Strategy: Buy on dips.

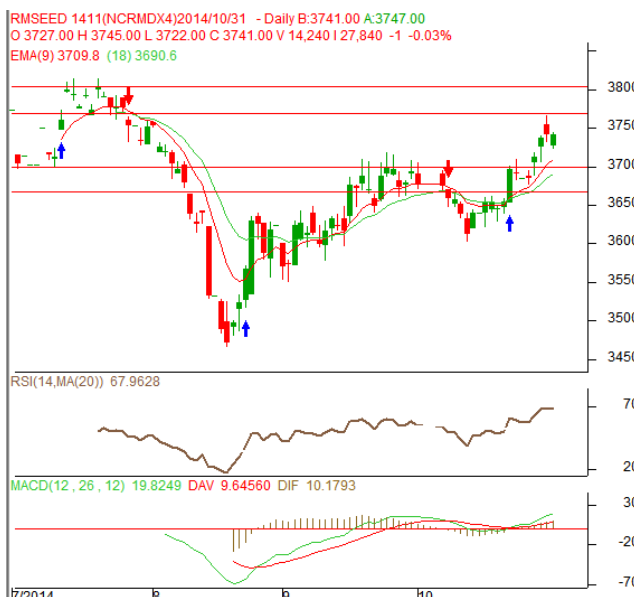
Intraday Supports & Resistances			S1	S2	PCP	R1	R2
Soybean	NCDEX	Nov	3195	3151	3287	3366	3428
Intraday Trade Call			Call	Entry	T1	T2	SL
Soybean	NCDEX	Nov	BUY	Above 3285	3305	3310	3273

* Do not carry-forward the position next day.

Commodity: Rapeseed/Mustard
Contract: Nov
Exchange: NCDEX
Expiry: Nov 20^h, 2014
RM SEED – Technical Outlook
Technical Commentary:

- Mustard seed edged-up on supportive buying.
- The prices closed above 9-day and 18 day EMA, indicating firm tone in near-term.
- MACD is rising in positive territory.
- RSI is flattering in neutral region while stochastic is rising in neutral zone.

The RM seed prices are expected to feature gains on Monday's session.


Strategy: Buy on dips.

Intraday Supports & Resistances			S1	S2	PCP	R1	R2
RM Seed	NCDEX	Nov	3697	3665	3741	3820	3840
Intraday Trade Call			Call	Entry	T1	T2	SL
RM Seed	NCDEX	Nov	BUY	Above 3789	3809	3814	3777

* Do not carry-forward the position next day.

Disclaimer

The information and opinions contained in the document have been compiled from sources believed to be reliable. The company does not warrant its accuracy, completeness and correctness. Use of data and information contained in this report is at your own risk. This document is not, and should not be construed as, an offer to sell or solicitation to buy any commodities. This document may not be reproduced, distributed or published, in whole or in part, by any recipient hereof for any purpose without prior permission from the Company. IASL and its affiliates and/or their officers, directors and employees may have positions in any commodities mentioned in this document (or in any related investment) and may from time to time add to or dispose of any such commodities (or investment). Please see the detailed disclaimer at <http://www.agriwatch.com/Disclaimer.asp>

© 2014 Indian Agribusiness Systems Pvt Ltd.