

Commodity: Soybean
Contract: Apr.
Exchange: NCDEX
Expiry: Apr. 20th, 2015
SOYBEAN – Technical Outlook
Technical Commentary:

- Soybean edged up on buying interest.
- Prices closed above 9-day and 18-day EMA, indicating weak tone in near-term.
- MACD is rising in the negative territory.
- RSI and stochastic are rising in neutral zone.

The soybean prices are likely to feature gains on Tuesday's session.


Strategy: Buy on dips.

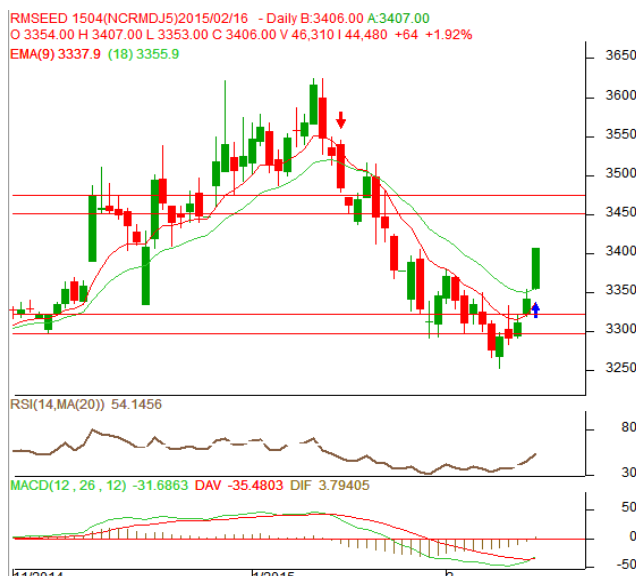
Intraday Supports & Resistances			S1	S2	PCP	R1	R2
Soybean	NCDEX	Apr.	3385	3360	3421	3455	3476
Intraday Trade Call			Call	Entry	T1	T2	SL
Soybean	NCDEX	Apr.	BUY	Above 3418	3438	3443	3406

* Do not carry-forward the position next day.

Commodity: Rapeseed/Mustard
Contract: Apr.
Exchange: NCDEX
Expiry: Apr. 20th, 2015
RM SEED – Technical Outlook
Technical Commentary:

- RM seed prices extended gains.
- The prices closed above 9-day and 18-day EMA, indicating firm tone in near-term.
- MACD is rising in negative territory.
- RSI and stochastic are rising in neutral zone.

The RM seed prices are expected to feature gains on Tuesday's session.


Strategy: Buy on dips.

Intraday Supports & Resistances			S1	S2	PCP	R1	R2
RM Seed	NCDEX	Apr.	3321	3296	3406	3450	3475
Intraday Trade Call			Call	Entry	T1	T2	SL
RM Seed	NCDEX	Apr.	BUY	Above 3404	3424	3429	3392

* Do not carry-forward the position next day.

Disclaimer

The information and opinions contained in the document have been compiled from sources believed to be reliable. The company does not warrant its accuracy, completeness and correctness. Use of data and information contained in this report is at your own risk. This document is not, and should not be construed as, an offer to sell or solicitation to buy any commodities. This document may not be reproduced, distributed or published, in whole or in part, by any recipient hereof for any purpose without prior permission from the Company. IASL and its affiliates and/or their officers, directors and employees may have positions in any commodities mentioned in this document (or in any related investment) and may from time to time add to or dispose of any such commodities (or investment). Please see the detailed disclaimer at <http://www.agriwatch.com/Disclaimer.asp>
 © 2015 Indian Agribusiness Systems Pvt Ltd.