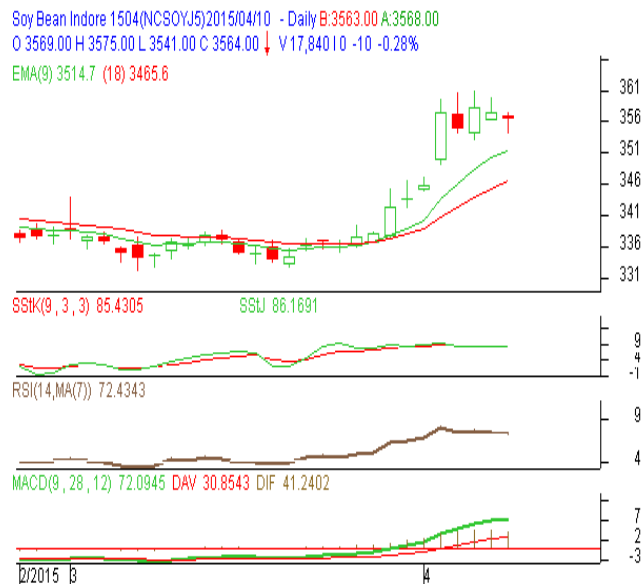


Commodity: Soybean
Contract: Apr.
Exchange: NCDEX
Expiry: Apr. 20th, 2015
SOYBEAN – Technical Outlook
Technical Commentary:

- Soybean could not sustain at higher level.
- Prices closed below 9-day and 18-day EMA, indicating weak tone in near-term.
- MACD is flattening in the negative territory.
- RSI is easing and stochastic is rising in neutral zone.

The soybean prices are expected to feature loss on Monday's session


Strategy: Sell on fall

Intraday Supports & Resistances			S1	S2	PCP	R1	R2
Soybean	NCDEX	Apr.	3400	3230	3564	3690	3740
Intraday Trade Call			Call	Entry	T1	T2	SL
Soybean	NCDEX	Apr.	SELL	Below 3565	3545	3540	3577

* Do not carry-forward the position next day.

Commodity: Rapeseed/Mustard
Contract: Apr.
Exchange: NCDEX
Expiry: Apr. 20th, 2015
RM SEED – Technical Outlook
Technical Commentary:

- RM seed could not sustain at higher level.
- The prices closed above 9-day and 18-day EMA, indicating firm tone in near-term.
- MACD is flattering in negative territory.
- RSI and stochastic are easing in neutral zone.

The soybean prices are expected to feature loss on Monday's session.


Strategy: Sell on fall

Intraday Supports & Resistances			S1	S2	PCP	R1	R2
RM Seed	NCDEX	Apr.	3400	3320	3572	3680	3700
Intraday Trade Call			Call	Entry	T1	T2	SL
RM Seed	NCDEX	Apr.	SELL	Below 3575	3555	3550	3587

* Do not carry-forward the position next day.

Disclaimer

The information and opinions contained in the document have been compiled from sources believed to be reliable. The company does not warrant its accuracy, completeness and correctness. Use of data and information contained in this report is at your own risk. This document is not, and should not be construed as, an offer to sell or solicitation to buy any commodities. This document may not be reproduced, distributed or published, in whole or in part, by any recipient hereof for any purpose without prior permission from the Company. IASL and its affiliates and/or their officers, directors and employees may have positions in any commodities mentioned in this document (or in any related investment) and may from time to time add to or dispose of any such commodities (or investment). Please see the detailed disclaimer at <http://www.agriwatch.com/Disclaimer.asp>
 © 2015 Indian Agribusiness Systems Pvt Ltd.