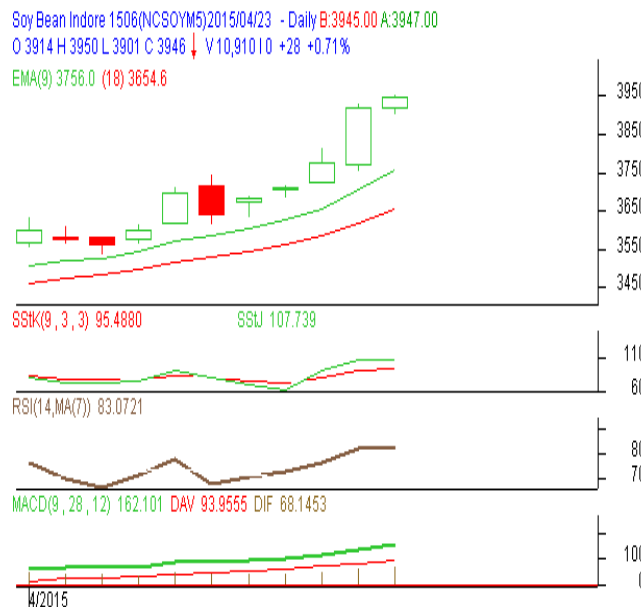


**Commodity: Soybean**  
**Contract: Jun**
**Exchange: NCDEX**  
**Expiry: Jun 19<sup>th</sup>, 2015**
**SOYBEAN – Technical Outlook**
**Technical Commentary:**

- Soybean could not sustain at lower level.
- Prices closed below 9-day and 18-day EMA, indicating weak tone in near-term.
- MACD is flattening in the negative territory.
- RSI is easing and stochastic is rising in neutral zone.

*The soybean prices are expected to feature gain on Thursday's session*


**Strategy: Buy on rise**

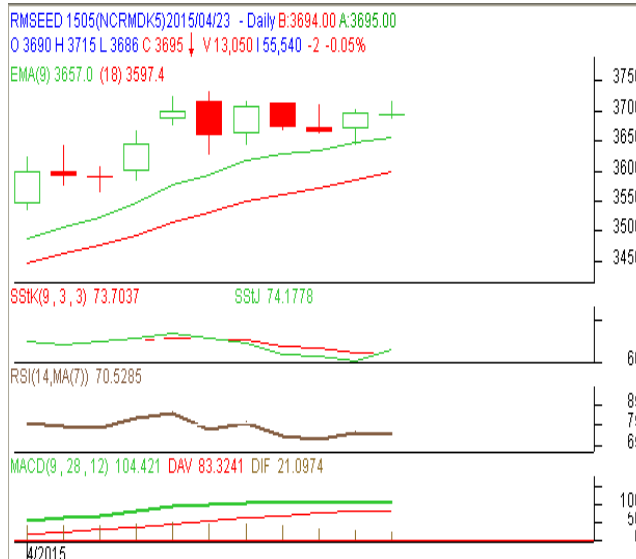
Intraday Supports & Resistances			S1	S2	PCP	R1	R2
Soybean	NCDEX	Jun	3400	3230	3918	3980	4050
Intraday Trade Call			Call	Entry	T1	T2	SL
Soybean	NCDEX	Jun	BUY	Above 3910	3930	3935	3898

\* Do not carry-forward the position next day.

**Commodity: Rapeseed/Mustard**  
**Contract: May**
**Exchange: NCDEX**  
**Expiry: May 20<sup>th</sup>, 2015**
**RM SEED – Technical Outlook**
**Technical Commentary:**

- RM seed could not sustain at lower level.
- The prices closed above 9-day and 18-day EMA, indicating firm tone in near-term.
- MACD is flattering in negative territory.
- RSI and stochastic are easing in neutral zone.

*The rapeseed prices are expected to feature gain on Thursday's session.*


**Strategy: Buy on rise**

Intraday Supports & Resistances			S1	S2	PCP	R1	R2
RM Seed	NCDEX	May	3400	3320	3697	3800	3910
Intraday Trade Call			Call	Entry	T1	T2	SL
RM Seed	NCDEX	May	BUY	Above 3695	3715	3720	3683

\* Do not carry-forward the position next day.

**Disclaimer**

The information and opinions contained in the document have been compiled from sources believed to be reliable. The company does not warrant its accuracy, completeness and correctness. Use of data and information contained in this report is at your own risk. This document is not, and should not be construed as, an offer to sell or solicitation to buy any commodities. This document may not be reproduced, distributed or published, in whole or in part, by any recipient hereof for any purpose without prior permission from the Company. IASL and its affiliates and/or their officers, directors and employees may have positions in any commodities mentioned in this document (or in any related investment) and may from time to time add to or dispose of any such commodities (or investment). Please see the detailed disclaimer at <http://www.agriwatch.com/Disclaimer.asp>

© 2015 Indian Agribusiness Systems Pvt Ltd.