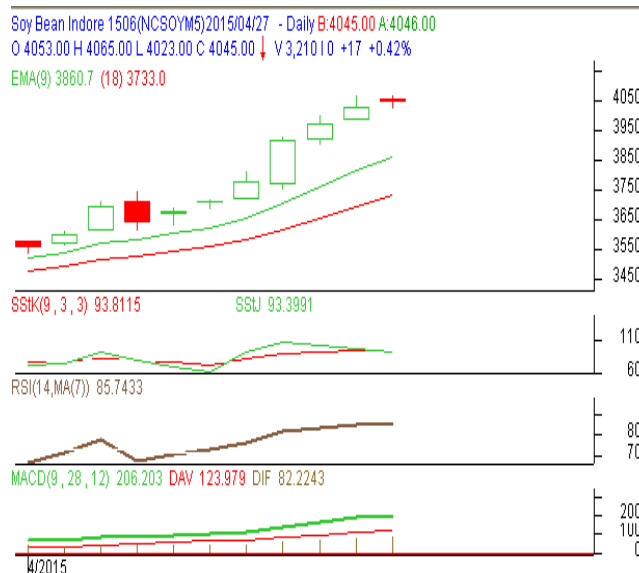


Commodity: Soybean
Contract: Jun
Exchange: NCDEX
Expiry: Jun 19th, 2015
SOYBEAN – Technical Outlook
Technical Commentary:

- Soybean could not sustain at lower level.
- Prices closed below 9-day and 18-day EMA, indicating weak tone in near-term.
- MACD is flattening in the negative territory.
- RSI is easing and stochastic is rising in neutral zone.

The soybean prices are expected to feature gain on Monday's session


Strategy: Buy on rise

| Intraday Supports & Resistances | | | S1 | S2 | PCP | R1 | R2 |
|---------------------------------|-------|-----|------|------------|------|------|------|
| Soybean | NCDEX | Jun | 3400 | 3230 | 4028 | 4150 | 4230 |
| Intraday Trade Call | | | Call | Entry | T1 | T2 | SL |
| Soybean | NCDEX | Jun | BUY | Above 4025 | 4045 | 4050 | 4013 |

* Do not carry-forward the position next day.

Commodity: Rapeseed/Mustard
Contract: May

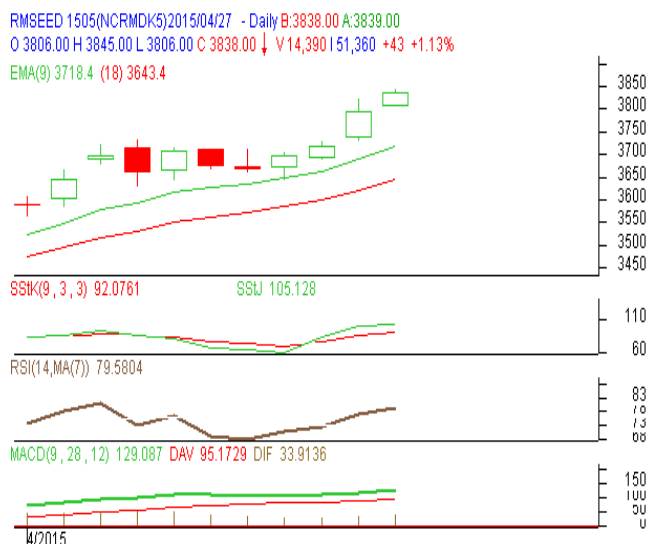
Exchange: NCDEX
Expiry: May 20th, 2015

RM SEED – Technical Outlook

Technical Commentary:

- RM seed could not sustain at lower level.
- The prices closed above 9-day and 18-day EMA, indicating firm tone in near-term.
- MACD is flattering in negative territory.
- RSI and stochastic are easing in neutral zone.

The rapeseed prices are expected to feature gain on Monday's session.



Strategy: Buy on rise

| Intraday Supports & Resistances | | | S1 | S2 | PCP | R1 | R2 |
|---------------------------------|-------|-----|------|------------|------|------|------|
| RM Seed | NCDEX | May | 3400 | 3320 | 3795 | 3880 | 3910 |
| Intraday Trade Call | | | Call | Entry | T1 | T2 | SL |
| RM Seed | NCDEX | May | BUY | Above 3790 | 3810 | 3815 | 3778 |

* Do not carry-forward the position next day.

Disclaimer

The information and opinions contained in the document have been compiled from sources believed to be reliable. The company does not warrant its accuracy, completeness and correctness. Use of data and information contained in this report is at your own risk. This document is not, and should not be construed as, an offer to sell or solicitation to buy any commodities. This document may not be reproduced, distributed or published, in whole or in part, by any recipient hereof for any purpose without prior permission from the Company. IASL and its affiliates and/or their officers, directors and employees may have positions in any commodities mentioned in this document (or in any related investment) and may from time to time add to or dispose of any such commodities (or investment). Please see the detailed disclaimer at <http://www.agriwatch.com/Disclaimer.asp>
© 2015 Indian Agribusiness Systems Pvt Ltd.