

Commodity: Soybean  
Contract: Jun.

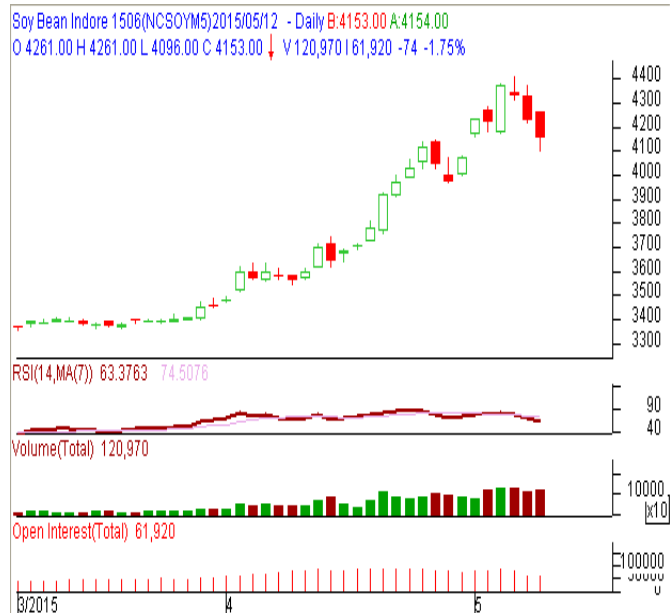
Exchange: NCDEX  
Expiry: Jun. 19<sup>th</sup>, 2015

### SOYBEAN – Technical Outlook

#### Technical Commentary:

- Prices closed above 9-day and 18-day EMA, indicating firm tone in near-term.
- MACD is rising in the positive territory.
- RSI and stochastic are easing in neutral region.

*The soybean prices are likely to feature loss today.*



**Strategy: Sell on rise**

Intraday Supports & Resistances			S1	S2	PCP	R1	R2
Soybean	NCDEX	Jun.	3929	3900	4153	5000	5160
Intraday Trade Call			Call	Entry	T1	T2	SL
Soybean	NCDEX	Jun.	<b>SELL</b>	Below 4155	4135	4130	4167

\* Do not carry-forward the position next day.

Commodity: Rapeseed/Mustard  
Contract: Jun.

Exchange: NCDEX  
Expiry: Jun. 19<sup>th</sup>, 2015

### RM SEED – Technical Outlook

#### Technical Commentary:

- The prices closed above 9-day and 18-day EMA, indicating firm tone in near-term.
- MACD is rising in positive territory.
- RSI is rising in overbought region while stochastic is falling in neutral zone.

*The RM seed prices are expected to feature gain today.*



**Strategy: Buy on fall.**

Intraday Supports & Resistances			S1	S2	PCP	R1	R2
RM Seed	NCDEX	Jun	3730	3666	4095	5860	6000
Intraday Trade Call			Call	Entry	T1	T2	SL
RM Seed	NCDEX	Jun	BUY	Above 4090	5010	5015	4078

\* Do not carry-forward the position next day.

#### Disclaimer

The information and opinions contained in the document have been compiled from sources believed to be reliable. The company does not warrant its accuracy, completeness and correctness. Use of data and information contained in this report is at your own risk. This document is not, and should not be construed as, an offer to sell or solicitation to buy any commodities. This document may not be reproduced, distributed or published, in whole or in part, by any recipient hereof for any purpose without prior permission from the Company. IASL and its affiliates and/or their officers, directors and employees may have positions in any commodities mentioned in this document (or in any related investment) and may from time to time add to or dispose of any such commodities (or investment). Please see the detailed disclaimer at <http://www.agriwatch.com/Disclaimer.asp>  
© 2015 Indian Agribusiness Systems Pvt Ltd.