

Commodity: Soybean  
Contract: Jan.

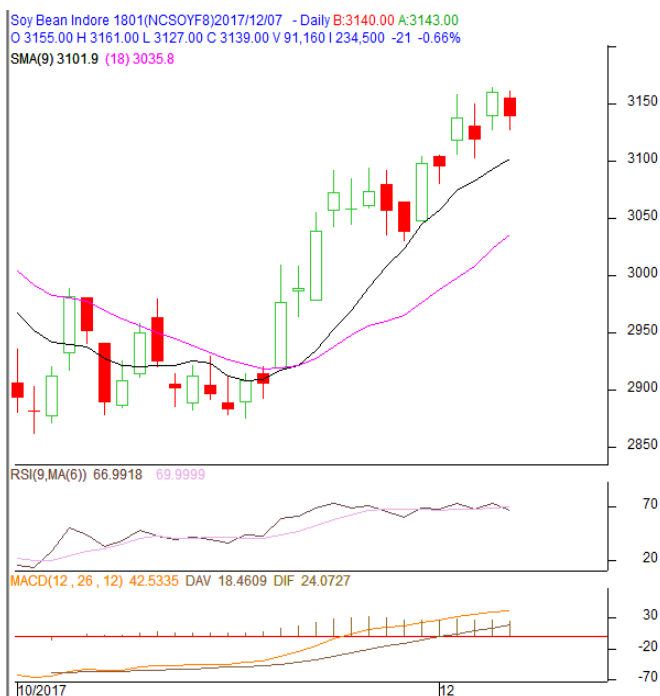
Exchange: NCDEX  
Expiry: Jan. 18th, 2017

### SOYBEAN – Technical Outlook

#### Technical Commentary:

- Soybean noticed weak tone after the previous day's positive tone.
- Prices closed above 9-day and 18-day EMA, supporting overall firm tone of the market in the medium –term.
- MACD is increasing in the positive territory.
- RSI is declining in the neutral zone and stochastic is declining in the overbought zone.

*The soybean prices are likely to feature loss on Friday's session.*



**Strategy: Sell on rise.**

Intraday Supports & Resistances			S1	S2	PCP	R1	R2
Soybean	NCDEX	Jan.	3050	3000	3139	3250	3300
Intraday Trade Call			Call	Entry	T1	T2	SL
Soybean	NCDEX	Jan.	<b>Sell</b>	Below 3155	3135	3125	3167

\* Do not carry-forward the position next day.

**Commodity: Rapeseed/Mustard**  
**Contract: Jan.**
**Exchange: NCDEX**  
**Expiry: Jan. 18th, 2017**
**RM SEED – Technical Outlook**
**Technical Commentary:**

- Rapeseed-mustard ended lower compared to previous day's level in the market.
- The prices closed below 9-day and 18-day EMA, indicating overall weak tone of the market in the medium – term.
- MACD is increasing in the positive territory.
- RSI and stochastic are declining in the neutral zone.

*The RM seed prices are expected to feature loss on Friday's session.*


**Strategy: Sell on rise.**

Intraday Supports & Resistances			S1	S2	PCP	R1	R2
RM Seed	NCDEX	Jan.	3950	3900	4035	4150	4200
Intraday Trade Call			Call	Entry	T1	T2	SL
RM Seed	NCDEX	Jan.	<b>Sell</b>	Below 4050	4030	4020	4062

\* Do not carry-forward the position next day.

**Disclaimer**

The information and opinions contained in the document have been compiled from sources believed to be reliable. The company does not warrant its accuracy, completeness and correctness. Use of data and information contained in this report is at your own risk. This document is not, and should not be construed as, an offer to sell or solicitation to buy any commodities. This document may not be reproduced, distributed or published, in whole or in part, by any recipient hereof for any purpose without prior permission from the Company. IASL and its affiliates and/or their officers, directors and employees may have positions in any commodities mentioned in this document (or in any related investment) and may from time to time add to or dispose of any such commodities (or investment). Please see the detailed disclaimer at <http://www.agriwatch.com/Disclaimer.asp>  
 © 2017 Indian Agribusiness Systems Pvt Ltd.