

Commodity: Soybean
Contract: Feb.

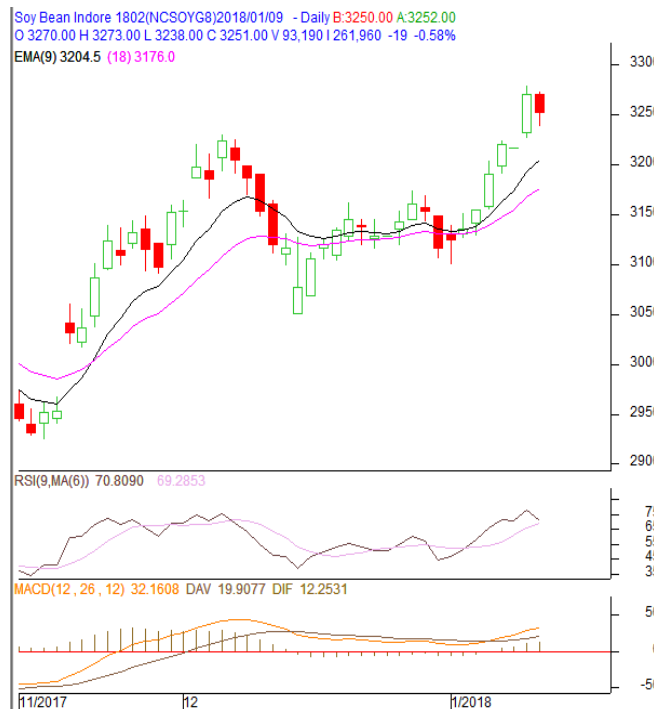
Exchange: NCDEX
Expiry: Feb. 18th, 2017

SOYBEAN – Technical Outlook

Technical Commentary:

- Soybean witnessed easy tone after the previous day's firm tone.
- Prices closed above 9-day and 18-day EMA, supporting overall firm tone of the market in the medium-term.
- MACD is increasing in the positive territory.
- RSI is declining and stochastic is increasing in the overbought zone.

The soybean prices are likely to feature loss on Wednesday's session.



Strategy: Sell on rise.

Intraday Supports & Resistances			S1	S2	PCP	R1	R2
Soybean	NCDEX	Feb.	3150	3100	3251	3350	3400
Intraday Trade Call			Call	Entry	T1	T2	SL
Soybean	NCDEX	Feb.	Sell	Below 3265	3245	3235	3277

* Do not carry-forward the position next day.

Commodity: Rapeseed/Mustard
Contract: Apr.
Exchange: NCDEX
Expiry: Apr. 18th, 2017
RM SEED – Technical Outlook
Technical Commentary:

- Rapeseed-mustard ended lower compared to previous day's level in the market.
- The prices closed below 9-day and 18-day EMA, indicating overall weak tone of the market in the medium – term.
- MACD is declining in the positive territory.
- RSI and stochastic are declining in the neutral zone.

The RM seed prices are expected to feature loss on Wednesday's session.


Strategy: Sell on rise.

Intraday Supports & Resistances			S1	S2	PCP	R1	R2
RM Seed	NCDEX	Apr.	3950	3900	4050	4150	4200
Intraday Trade Call			Call	Entry	T1	T2	SL
RM Seed	NCDEX	Apr.	Sell	Below 4060	4040	4030	4072

* Do not carry-forward the position next day.

Disclaimer

The information and opinions contained in the document have been compiled from sources believed to be reliable. The company does not warrant its accuracy, completeness and correctness. Use of data and information contained in this report is at your own risk. This document is not, and should not be construed as, an offer to sell or solicitation to buy any commodities. This document may not be reproduced, distributed or published, in whole or in part, by any recipient hereof for any purpose without prior permission from the Company. IASL and its affiliates and/or their officers, directors and employees may have positions in any commodities mentioned in this document (or in any related investment) and may from time to time add to or dispose of any such commodities (or investment). Please see the detailed disclaimer at <http://www.agriwatch.com/Disclaimer.asp>
 © 2017 Indian Agribusiness Systems Pvt Ltd.