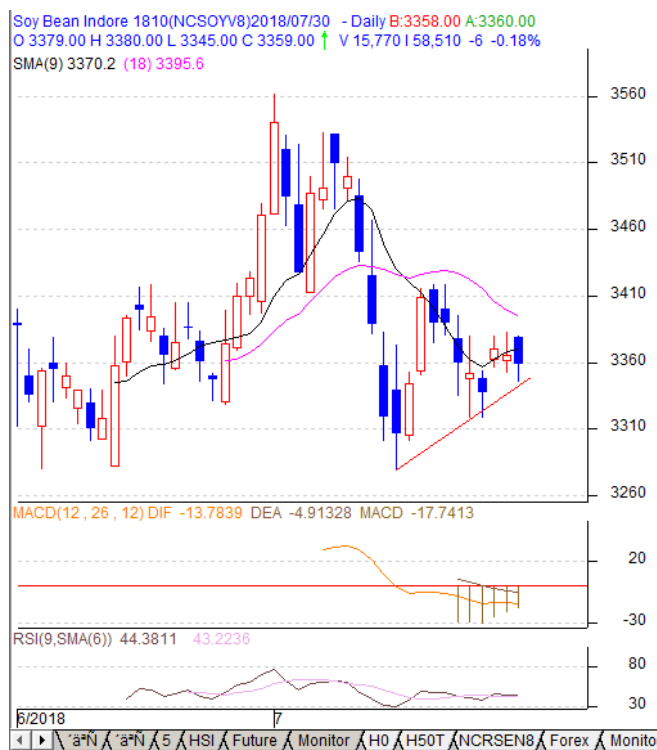


Commodity: Soybean
Contract: Oct
Exchange: NCDEX
Expiry: Oct 20th, 2017
SOYBEAN – Technical Outlook
Technical Commentary:

- Soybean opened with a gap up and continued to weaken throughout the session and finally closed by losing 6 rupees low from previous closing.
- Price are presently trading at its 9-Day EMA thereby suggesting lack of positive momentum.
- Going ahead, prices are expected to trade within the range of 3310 to 3410.
- The technical oscillators like 14-Day RSI have been flat.
- MACD is in the negative region thus maintaining the weak trend.
- On the upside, INR 3410 shall act as immediate resistance followed by INR 3510
- On the downside, INR 3310 shall act as immediate support.

The soybean prices are likely to feature losses today.


/m Strategy: Sell

Intraday Supports & Resistances			S1	S2	PCP	R1	R2
Soybean	NCDEX	Oct	3280	3310	3359	3410	3510
Intraday Trade Call			Call	Entry	T1	T2	SL
Soybean	NCDEX	Oct	Sell	3360-70	3350	3340	3430

* Do not carry-forward the position next day.

Commodity: Rapeseed/Mustard
Contract: Aug
Exchange: NCDEX
Expiry: Aug 20th, 2017
RM SEED – Technical Outlook
Technical Commentary:

- Rapeseed-mustard gained further on the first day of week opened with a gap up and weakening in the entire session to close at 4184.
- Prices may extend its gains towards 4220, a strong long term resistance. Breaching which will help to gain towards 4378.
- Prices are above 18 day SMA but below 9 day SMA.
- On the daily technical setup, 14-Day RSI is recovering towards neutral zone
- MACD has turned towards neutral zone.
- On the whole a mixed price action with choppy trade is to follow.
- On the upside, INR 4220 shall act as immediate resistance.
- On the downside, immediate support is located at INR 4130 followed by INR 4070.

The RM seed prices are expected to feature gains today.


Strategy: Buy

Intraday Supports & Resistances			S1	S2	PCP	R1	R2
RM Seed	NCDEX	Aug	4070	4090	4184	4130	4170
Intraday Trade Call			Call	Entry	T1	T2	SL
RM Seed	NCDEX	Aug	Buy	4170-80	4200	4220	4130

* Do not carry-forward the position next day.

Disclaimer

The information and opinions contained in the document have been compiled from sources believed to be reliable. The company does not warrant its accuracy, completeness and correctness. Use of data and information contained in this report is at your own risk. This document is not, and should not be construed as, an offer to sell or solicitation to buy any commodities. This document may not be reproduced, distributed or published, in whole or in part, by any recipient hereof for any purpose without prior permission from the Company. IASL and its affiliates and/or their officers, directors and employees may have positions in any commodities mentioned in this document (or in any related investment) and may from time to time add to or dispose of any such commodities (or investment). Please see the detailed disclaimer at <http://www.agriwatch.com/Disclaimer.asp>