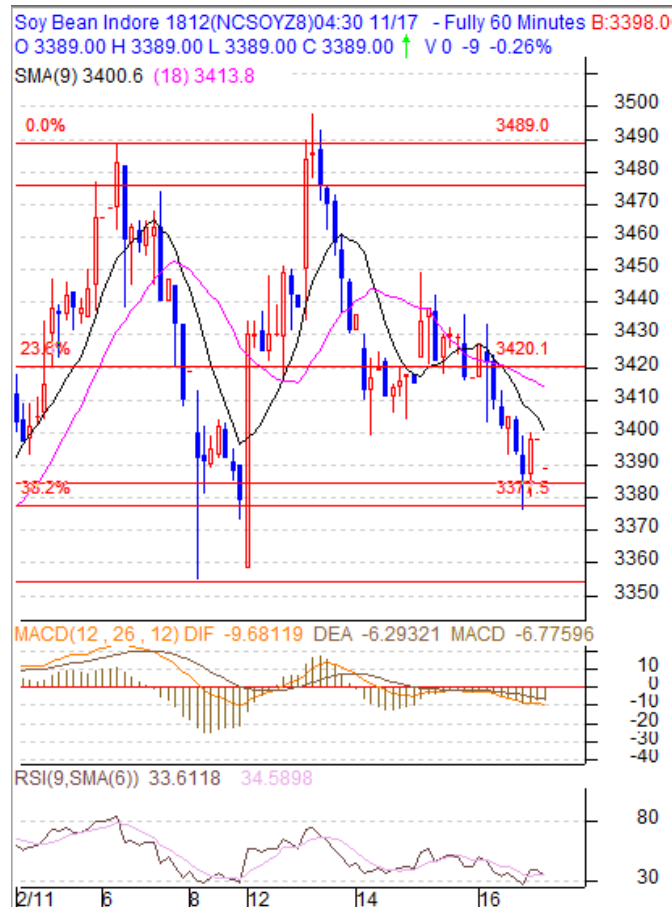


Commodity: Soybean
Contract: Dec
Exchange: NCDEX
Expiry: Dec 20th, 2018
SOYBEAN – Technical Outlook
Technical Commentary:

- Soybean Dec contract is finding support at 36.2% and showing a reversal from this level.
- Soybean closed below 9 and 18 day EMA.
- The technical oscillators like 14-Day RSI is inching towards oversold zone.
- MACD is in negative territory.

The soybean price is likely to feature gains today.


Strategy: Sell

Intraday Supports & Resistances			S2	S1	PCP	R1	R2
Soybean	NCDEX	Dec	3350	3380	3398	3400	3450
Intraday Trade Call			Call	Entry	T1	T2	SL
Soybean	NCDEX	Dec	Buy	3380-85	3400	3450	Below 3370

* Do not carry-forward the position next day.

Commodity: Rapeseed/Mustard
Contract: Dec
Exchange: NCDEX
Expiry: Dec 20th, 2018
RM SEED – Technical Outlook
Technical Commentary:

- Rapeseed-Mustard found support at 4130 in the last trading session but failed to breach it.
- Mustard traded below 9 and 18 day EMA.
- On the daily technical setup, 14-Day RSI is in the oversold zone.
- MACD is in negative territory

The RM seed prices are expected to feature gains today.


Strategy: Buy

Intraday Supports & Resistances			S2	S1	PCP	R1	R2
RM Seed	NCDEX	Dec	4120	4130	4131	4150	4190
Intraday Trade Call			Call	Entry	T1	T2	SL
RM Seed	NCDEX	Dec	Buy	4120-30	4150	4190	4115

* Do not carry-forward the position next day.

Disclaimer

The information and opinions contained in the document have been compiled from sources believed to be reliable. The company does not warrant its accuracy, completeness and correctness. Use of data and information contained in this report is at your own risk. This document is not, and should not be construed as, an offer to sell or solicitation to buy any commodities. This document may not be reproduced, distributed or published, in whole or in part, by any recipient hereof for any purpose without prior permission from the Company. IASL and its affiliates and/or their officers, directors and employees may have positions in any commodities mentioned in this document (or in any related investment) and may from time to time add to or dispose of any such commodities (or investment). Please see the detailed disclaimer at <http://www.agriwatch.com/Disclaimer.asp>