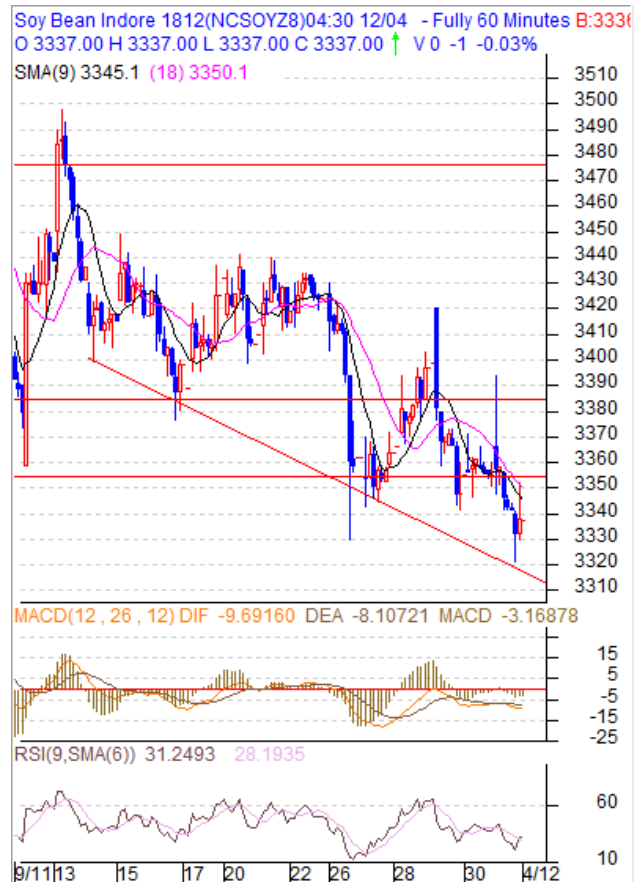


**Commodity: Soybean**
**Contract: Dec**
**Exchange: NCDEX**
**Expiry: Dec 20th, 2018**
**SOYBEAN – Technical Outlook**
**Technical Commentary:**

- Soybean Dec contract taking trendline support and has witnessed pull back after testing it in 60 minutes chart.
- Soybean closed below 9 and 18 day EMA.
- The technical oscillators like 14-Day RSI is recovering from oversold zone.
- MACD is in negative territory.

*The soybean price is likely to feature gains today.*


**Strategy: Sell**

Intraday Supports & Resistances			S2	S1	PCP	R1	R2
Soybean	NCDEX	Dec	3325	3338	3355	3375	3400
Intraday Trade Call			Call	Entry	T1	T2	SL
Soybean	NCDEX	Dec	Buy	3330-35	3375	3400	Below 3320

\* Do not carry-forward the position next day.

**Commodity: Rapeseed/Mustard**  
**Contract: Dec**
**Exchange: NCDEX**  
**Expiry: Dec 20th, 2018**
**RM SEED – Technical Outlook**
**Technical Commentary:**

- Rapeseed-Mustard is finding trendline support in a bearish trend.
- Mustard traded below 9 and 18 day EMA.
- On the daily technical setup, 14-Day RSI is in the oversold zone.
- MACD is in negative territory

*The RM seed prices are expected to feature gains today.*


**Strategy: Buy**

Intraday Supports & Resistances			S2	S1	PCP	R1	R2
RM Seed	NCDEX	Dec	3930	3950	3960	3970	4000
Intraday Trade Call			Call	Entry	T1	T2	SL
RM Seed	NCDEX	Dec	Buy	3925-35	3950	3970	3920

\* Do not carry-forward the position next day.

**Disclaimer**

The information and opinions contained in the document have been compiled from sources believed to be reliable. The company does not warrant its accuracy, completeness and correctness. Use of data and information contained in this report is at your own risk. This document is not, and should not be construed as, an offer to sell or solicitation to buy any commodities. This document may not be reproduced, distributed or published, in whole or in part, by any recipient hereof for any purpose without prior permission from the Company. IASL and its affiliates and/or their officers, directors and employees may have positions in any commodities mentioned in this document (or in any related investment) and may from time to time add to or dispose of any such commodities (or investment). Please see the detailed disclaimer at <http://www.agriwatch.com/Disclaimer.asp>