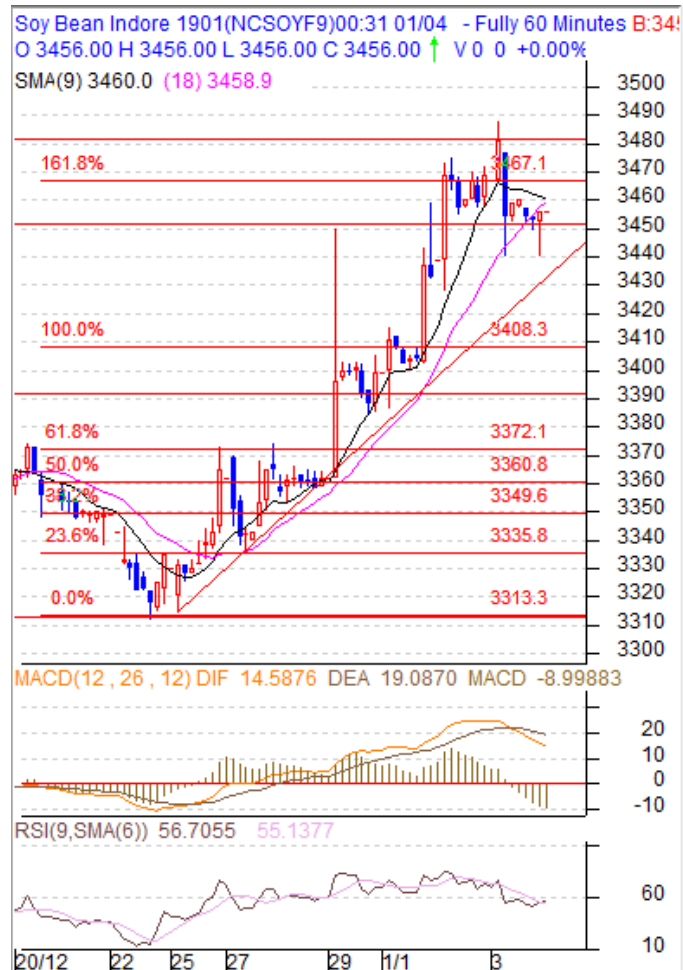


**Commodity: Soybean**
**Contract: Jan**
**Exchange: NCDEX**
**Expiry: Jan 18th, 2019**
**SOYBEAN – Technical Outlook**
**Technical Commentary:**

- Soybean Jan contract 60 minutes chart tested the resistance of 3480 and pulled back towards 3450 finding support.
- Soybean closed above 9 and 18 day EMA.
- The technical oscillators like 14-Day RSI is in neutral zone.
- MACD is in negative territory.


**Strategy: Sell**

Intraday Supports & Resistances			S2	S1	PCP	R1	R2
Soybean	NCDEX	Jan	3410	3450	3453	3480	3500
Intraday Trade Call			Call	Entry	T1	T2	SL
Soybean	NCDEX	Jan	<b>Sell</b>	3480-85	3450	3440	3500

\* Do not carry-forward the position next day.

**Commodity: Rapeseed/Mustard**  
**Contract: Jan**
**Exchange: NCDEX**  
**Expiry: Jan 18th, 2019**
**RM SEED – Technical Outlook**
**Technical Commentary:**

- Rapeseed-Mustard is finding trendline support and trading in a tight band.
- Mustard traded at 9 and 18 day EMA.
- On the daily technical setup, 14-Day RSI is in the neutral zone.
- MACD is in positive territory


**Strategy: Buy**

Intraday Supports & Resistances			S2	S1	PCP	R1	R2
RM Seed	NCDEX	Jan	3900	3920	3941	3990	4020
Intraday Trade Call			Call	Entry	T1	T2	SL
RM Seed	NCDEX	Jan	Buy	3929-3933	3947	3990	3920

\* Do not carry-forward the position next day.

**Disclaimer**

The information and opinions contained in the document have been compiled from sources believed to be reliable. The company does not warrant its accuracy, completeness and correctness. Use of data and information contained in this report is at your own risk. This document is not, and should not be construed as, an offer to sell or solicitation to buy any commodities. This document may not be reproduced, distributed or published, in whole or in part, by any recipient hereof for any purpose without prior permission from the Company. IASL and its affiliates and/or their officers, directors and employees may have positions in any commodities mentioned in this document (or in any related investment) and may from time to time add to or dispose of any such commodities (or investment). Please see the detailed disclaimer at <http://www.agriwatch.com/Disclaimer.asp>