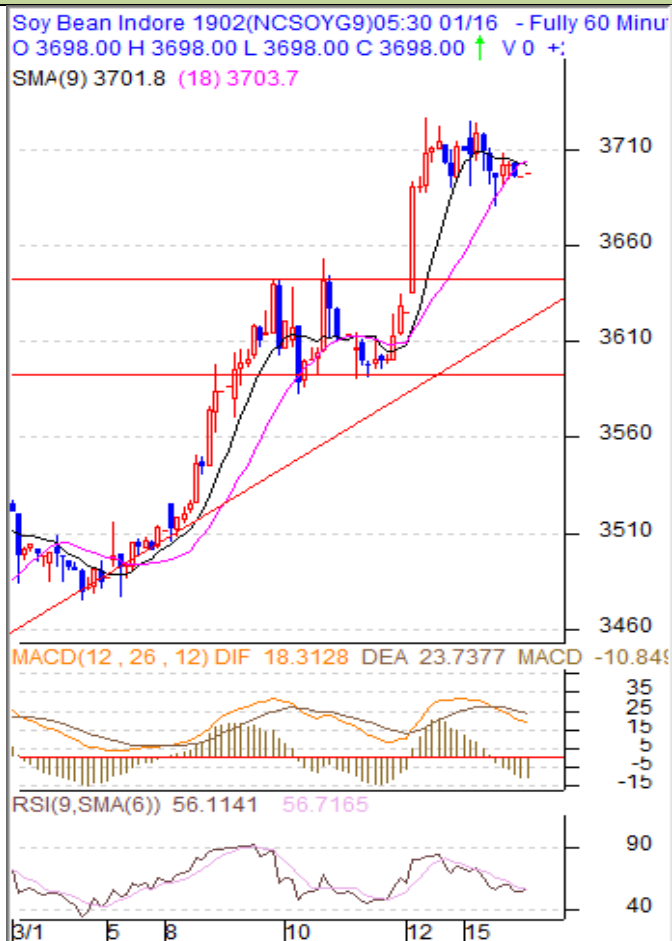


**Commodity: Soybean**  
**Contract: Feb**
**Exchange: NCDEX**  
**Expiry: Feb 20th, 2019**
**SOYBEAN – Technical Outlook**
**Technical Commentary:**

- Soybean Feb contract 60 minutes chart traded lower and closed below 3700 at 3696.
- Soybean closed above 9 and 18 day EMA.
- The technical oscillators like 14-Day RSI is in neutral zone.
- MACD is in negative territory.


**Strategy: Sell**

Intraday Supports & Resistances			S2	S1	PCP	R1	R2
Soybean	NCDEX	Feb	3650	3700	3696	3720	3730
Intraday Trade Call			Call	Entry	T1	T2	SL
Soybean	NCDEX	Feb	<b>Sell</b>	3720-3730	3700	3650	3750

\* Do not carry-forward the position next day.

**Commodity: Rapeseed/Mustard**  
**Contract: Feb**
**Exchange: NCDEX**  
**Expiry: Feb 20th, 2019**
**RM SEED – Technical Outlook**
**Technical Commentary:**

- Rapeseed-Mustard continued trade downwards and made contract lows.
- On weekly chart the 1M Continuous chart has breached the trendline support and hence prices is expected to weaken towards 3800 and below
- Mustard traded below 9 and 18 day EMA.
- On the daily technical setup, 14-Day RSI is in the oversold zone.
- MACD is in negative territory


**Strategy: Buy**

Intraday Supports & Resistances			S2	S1	PCP	R1	R2
RM Seed	NCDEX	Feb	3800	3840	3841	3877	3890
Intraday Trade Call			Call	Entry	T1	T2	SL
RM Seed	NCDEX	Feb	Buy	3825-30	3840	3850	3810

\* Do not carry-forward the position next day.

**Disclaimer**

The information and opinions contained in the document have been compiled from sources believed to be reliable. The company does not warrant its accuracy, completeness and correctness. Use of data and information contained in this report is at your own risk. This document is not, and should not be construed as, an offer to sell or solicitation to buy any commodities. This document may not be reproduced, distributed or published, in whole or in part, by any recipient hereof for any purpose without prior permission from the Company. IASL and its affiliates and/or their officers, directors and employees may have positions in any commodities mentioned in this document (or in any related investment) and may from time to time add to or dispose of any such commodities (or investment). Please see the detailed disclaimer at <http://www.agriwatch.com/Disclaimer.asp>  
 © 2018 Indian Agribusiness Systems Pvt Ltd.