

Commodity: Soybean
 Contract: Feb

Exchange: NCDEX
 Expiry: Feb 20th, 2019

SOYBEAN – Technical Outlook

Technical Commentary:

- Soybean Feb contract 60 minutes chart inched toward previous high and find resistance at 3900.
- Soybean closed above 9 and 18 day EMA.
- The technical oscillators like 14-Day RSI is in overbought zone.
- MACD is in positive territory.



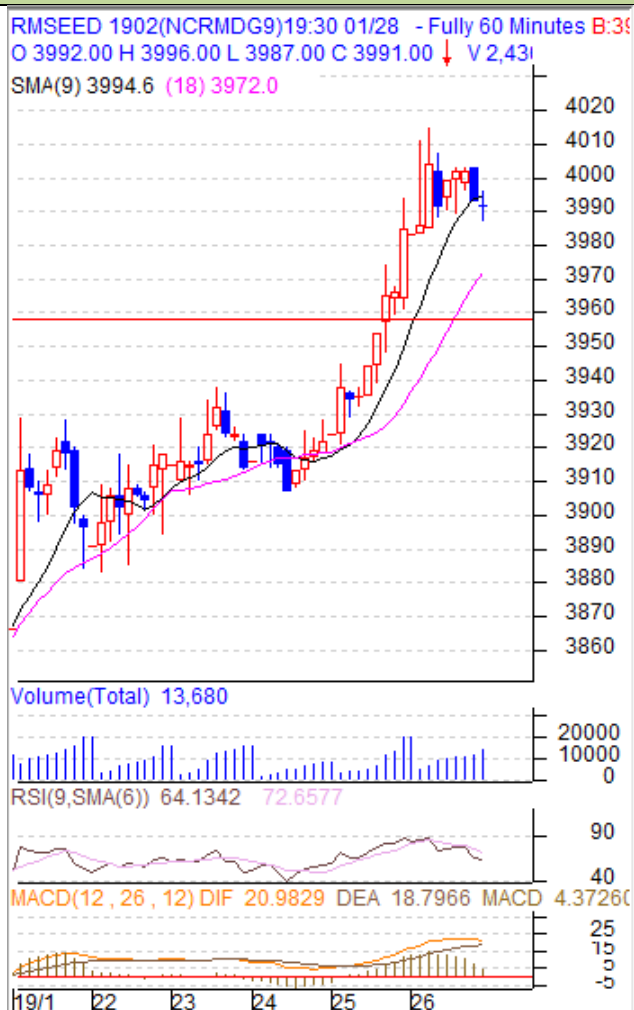
Strategy: Sell

Intraday Supports & Resistances			S2	S1	PCP	R1	R2
Soybean	NCDEX	Feb	3800	3850	3905	3875	3920
Intraday Trade Call			Call	Entry	T1	T2	SL
Soybean	NCDEX	Feb	Sell	3895-3900	3860	3850	3930

* Do not carry-forward the position next day.

Commodity: Rapeseed/Mustard
Contract: Feb
Exchange: NCDEX-
Expiry: Feb 20th, 2019
RM SEED – Technical Outlook
Technical Commentary:

- Rapeseed-Mustard tested the 4000 level and pulled back to close at 3992
- Mustard has made a doji candlestick indicating potential reversal
- Mustard traded above 9 and 18 day EMA.
- On the daily technical setup, 14-Day RSI is in neutral zone.
- MACD is in positive territory


Strategy: Sell

Intraday Supports & Resistances			S2	S1	PCP	R1	R2
RM Seed	NCDEX	Feb	3930	3960	3992	4000	4010
Intraday Trade Call			Call	Entry	T1	T2	SL
RM Seed	NCDEX	Feb	Sell	3985-90	3970	3960	4020

* Do not carry-forward the position next day.

Disclaimer

The information and opinions contained in the document have been compiled from sources believed to be reliable. The company does not warrant its accuracy, completeness and correctness. Use of data and information contained in this report is at your own risk. This document is not, and should not be construed as, an offer to sell or solicitation to buy any commodities. This document may not be reproduced, distributed or published, in whole or in part, by any recipient hereof for any purpose without prior permission from the Company. IASL and its affiliates and/or their officers, directors and employees may have positions in any commodities mentioned in this document (or in any related investment) and may from time to time add to or dispose of any such commodities (or investment). Please see the detailed disclaimer at <http://www.agriwatch.com/Disclaimer.asp>