

Oilseeds Weekly Research Report

Contents

- ❖ Executive Summary
- ❖ Outlook – Cash Market
- ❖ AW Oilseeds Index
- ❖ International Highlights
- ❖ Planted Area
- ❖ Soybean – Domestic & International
- ❖ Soy meal
- ❖ Technical Analysis - Soybean
- ❖ Rapeseed - Mustard
- ❖ RM Seed Supply, Rajasthan
- ❖ Technical Analysis – RM Seed
- ❖ Annexure – Prices etc.

Executive Summary

Soybean, soy meal and rapeseed-mustard featured losses on slack in demand from oilseeds processors during the week in review.

Higher soybean supplies and commencement of new rapeseed-mustard arrivals in the key cash markets remained bearish for the oilseeds.

We expected higher 2016/17 rabi oilseeds production on favourable weather and rise in the planted area in major rabi oilseeds including rapeseed-mustard and groundnut.

Soy meal exports continued to post remarkable growth year-on-year on higher soy meal supply outlook after rise in India's 2016/17 soybean production.

The domestic rapeseed-mustard crop is under maturity phase and the harvesting has started in the fields with early planted crop. The new crop supplies have commenced in the key growing belts of Rajasthan, Uttar Pradesh and Madhya Pradesh.

The crop is under good condition and there are no reports of crop damage due to bad weather, disease or pest.

Further area coverage under other rabi oilseed crop is also up by over 6% compared to the previous season.

The rapeseed-mustard is expected to feature range bound movement with weak bias ahead of new marketing season, higher acreage this season coupled with higher *kharif* oilseeds production. Besides, soybean will continue to remain under supply pressure in near-term.

Outlook – Cash Market

Outlook - Soybean (Spot, Indore): The soybean is expected to rebound after fall during the week in review. Higher domestic soybean production this season, weak record global soybean production continued to be pressurizing factor for the domestic soybean. The prices are expected to feature range bound movement between the price band of 2,950 – 3,070 levels (Indore, Plant basis).

Outlook – Soy meal: Soy meal prices have rebound on good overseas demand. Expectation of higher crushing on good soybean production continues to be a pressurizing factor for the domestic soy meal. Indian meal exporters are advised to explore new markets and aggressively try to regain the lost markets of peak exports season especially traditional South and Far-East Asian destinations including Japan in the upcoming season. The domestic meal prices are likely to remain under new crop supply pressure and feature range bound movement in near-term. Soy meal, Indore is expected to be in the range of 22,900 – 23,300/MT levels during the week.

Outlook - Rapeseed-Mustard (Spot, Jaipur basis): The rapeseed-mustard continued downtrend on weak demand in the seed during the week in review. Expectation of higher seed production after increase in the area under rapeseed this season and upcoming new marketing season will continue to pressure the seed further. The seed prices are likely to feature weakness and witness the levels between 3,960 – 4,000/Qtl; levels during the week.

International Highlights

- ❖ Safras and Mercado has projected its Brazil's 2016/17 soybean production estimate at record 107.1 million tonnes up 10.2% from previous season.
- ❖ In the monthly report Informa has raised the Brazil's 2016/17 soybean to 106.5 million tonnes, up 105 million in its previous estimate in December.
- ❖ INTL FC Stone has raised its Brazil's 2016/17 soybean production estimate to 104.1 million tonnes which is up from 102.8 million estimated in the January.
- ❖ European Union's 2016/17 soybean imports, by 31 Jan. 2017, have fallen by 6% to 7.6 million tonnes from 8.1 million tonnes registered at the corresponding period last year.
- ❖ Besides, the EU 2016/17 soy meal imports, by 31 Jan. 2017, are down by 14% at 10.7 million tonnes from 12.4 million previous year.
- ❖ AgRural consultancy estimated that the 2016/17 Brazil soybean crop harvest reached 4.3% of the area higher compared to 1.5% harvest in the corresponding period last year and 1.2% in the five-year average.
- ❖ The Rosario Grain Exchange has slashed the Argentina's soybean production forecast to 52.9 million tonnes from its earlier forecast of 54.4 million tonnes.
- ❖ Global soybean outturn in 2016/17 is seen at 334 million tonnes, down from a previous projection of 336 million but still a record high, reported in IGC.
- ❖ Conab, the Brazilian government agency, has raised Brazil's 2016/17 soybean production forecast to 103.8 million tonnes from its December forecast of 102.45 million tonnes.
- ❖ Informa Economics has raised its projection for the U.S. 2017 soybean planting at 88.612 million acres surpassing the record high of 83.17 million acres planted in 2016. The projected U.S. 2017 area under corn is slashed to 90.841 million acre from 90.971 million previously, which will divert to soybean.
- ❖ Informa has kept the US 2016 soybean yield at 52.8 bushels per acre which is up from USDA's estimate of 52.5 bushels which is all time high.
- ❖ FCStone has raised its forecast for US 2016 soybean productivity to a record 52.8 bushels per acre from 52.5 in its October report.

- ❖ Further, FCStone has raised its US 2016 soybean production estimate to 4.386 billion bushels 4.357 billion bushels projected in October.
- ❖ U.S. Environmental Protection Agency (EPA) increased US biodiesel production target by 6.5 percent in 2017 to 19.28 billion gallons compared to previous mandate of 18.11 billion gallons. Conventional biodiesel use is raised to 15 billion gallons which is mainly corn based biodiesel. Remaining 4.28 billion gallons is set for advanced biodiesel mandate where soy oil is the major contributor. This step will decrease soy oil end stocks in US.
- ❖ Pro Farmer has projected US soybean production at a record 4.093 billion bushels, considering an average yield of 49.3 bushels per acre after the crop tour.
- ❖ After AgRural and Conab, Agroconsult has raised Brazil's 2016/17 soybean production projection to 104.4 million tonnes from 102.6 million tonnes estimated in November.
- ❖ Brazil's 2016/17 soybean production is projected at 106 million tonnes by CRF, the production is much higher than the previous season (96.4 Mn T), when Brazil was hit by drought during the soybean crop development stage.
- ❖ Brazil's 2017 soybean exports are projected at 60 million tonnes which is up from 51-52 million estimated for the current marketing year 2016, reported by the National Association of Exporters of Cereals (ANEC).
- ❖ Further, CRF has projected Paraguay's soybean production at 8.6 million tonnes against 6.4 million tonnes produced last year.
- ❖ Abiove has forecast Brazil's 2017 soybean production at record 101.3 million tonnes compared to 96 – 98 million tonnes estimated for 2016 by various agencies. Abiove has estimated that Brazil will be able to export 57 million tonnes of soybean in 2017.
- ❖ Argentina's 2016/17 soybean production is expected to stand at 56 million tonnes against 58.8 million tonnes produced in 2015/16, said agriculture ministry.
- ❖ Argentina postpones its decision to slash the soy export taxes for this year and 2017. The Argentine government has decided to ease the tax by 0.5% per month from January 2018 to December 2019, stated the President Mauricio Macri.
- ❖ Macri had already cut the export tax from 35% to 30% in December shortly after Macri was elected as President and taking over the office.

- ❖ Argentina's government has raised its 2015/16 soybean crop to 58 million tonnes from its previous forecast of 57.6 million tonnes followed by faster than expected recovery of area considered lost to floods hit area in Argentina.
- ❖ Rosario Grains Exchange have revised its forecast for Argentina's 2015/16 soybeans up to 55.3 million tonnes from 55 million tonnes previously. This is despite severe crop damage after flood in April.
- ❖ Abiove has trimmed Brazil's 2015/16 soybean crop to 96.6 million tonnes (during Feb. – Jan.) from 97.3 million projected earlier. It has lowered Brazil's soybean exports estimate to 53 million tonnes from 53.8 million tonnes. Brazil had shipped 54.3 million tonnes in previous season.
- ❖ World supplies of soybeans are likely to increase sharply by 19 Mn T in 2015/16, despite a global prospective production decline by 3 Mn T, leading to another above-average increase in soybean crushing, reports Oil World.
- ❖ FCStone has increased Brazil's 2015/16 soybean production forecast to 98.6 million tonnes from 98 million tonnes in its previous estimates.
- ❖ Again, Informa has raised its forecast for Brazil's 2015/16 soybean production in its monthly report to 101.3 million tonnes from 100.5 million tonnes last month. It has lowered Argentina's 2015/16 soybean production forecast to 59.0 million tonnes from 60.0 million tonnes in February.
- ❖ Brazil's Congress has passed a bill that will increase the country's biodiesel blend from its current 7% to 10% over the next three years.
- ❖ AgRural has increased its forecast for Brazil's 2015/16 soybean to 99.7 million tonnes from 98.7 million after beneficial rains.
- ❖ Rosario Grains Exchange has raised Argentina's 2015/16 soybean production forecast to 59 million tonnes from 58.5 million tonnes in its earlier estimates. The increase is due to the higher than expected yield in the major growing belts.
- ❖ CRF reported that Argentina's soybean production is nearing last year's record of around 61 million tonnes. It also projected Paraguay 2015/16 soybean production at record 9.7 million tonnes which is above USDA's estimate of 8.8 million tonnes.
- ❖ As per the estimates by the government agency, Argentina's 2015/16 soybean production is estimated near 60 Mn T which is below last year production of 61.4 Mn T.

- ❖ China's total soybean imports in 2016 stood at 83.9 million tonnes which is up 2.7% from 2015. This was the smallest growth registered in years due to slowdown in China's economy and rise in country's own soybean production and sales from state inventories.
- ❖ China is forecast to import 85 million tonnes of soybeans in 2016/17, up from the previous season, however, higher inventories is expected to limit the rise in buying.

Sown Area – *Rabi* Oilseeds, India

In the official Rabi oilseeds planting report, by the Ministry of Agriculture, the total coverage area under Rabi oilseeds is reported at 84.35 lakh hectares, up 6.2% from 79.42 lakh ha in the corresponding period of last year. Of the major oilseeds, rapeseed-mustard sowing is reported up by 9.3% at 70.56 lha compared to 64.53 lha during the corresponding period of last year. Groundnut at 6.16 lha vs 5.96 lha, safflower at 0.95 lha vs 1.17 lha, sunflower at 1.69 lha vs 3.21 lha, sesamum 0.57 vs 0.71 and Linseed at 3.84 lha vs 2.93 lha during the same period last year.

Area in Lakh Hectares

Crop	As on 03 Feb. 2017	As on 03 Feb. 2016	% Change
Rapeseed/Mustard	70.56	64.53	9.3
Groundnut	6.16	5.96	3.4
Safflower	0.95	1.17	-18.8
Sunflower	1.69	3.21	-47.4
Sesamum	0.57	0.71	-19.7
Linseed	3.84	2.93	31.1
Others	0.58	0.91	-36.3
Total Oilseeds	84.35	79.42	6.2

Source: MoA, GOI

Soybean

The domestic soybean fell on lower demand from solvent extractors and higher supplies in bean during the week under review.

Currently, about 1.25 – 1.55 lakh bags of soybean are arriving in cash markets of Madhya Pradesh against 0.35 – 0.40 lakh bags during the corresponding period last year.

This shows the current supplies are 4 fold higher this season compared to the previous season.

Weak domestic soy meal demand and cheap soy oil imports remained bearish for the bean.

However, improved soy meal exports from India are expected to limit the losses in domestic bean.

But the crushers are not eager to quote higher for the bean in a bid to keep the meal prices attractive for the foreign buyers and keep the exports window open for some more time.

The *rabi* oilseeds planting is higher by 6% this season after increased *kharif* oilseeds production too remained pressurizing factor.

The major buyers in Madhya Pradesh are as follows: Amrit Mandsaur, Ambika Joara, Agrawal Soy Dewas, Agrawal Neemuch, Adani, Agro Sol. Datia, Avi Agro, Bansal, Bajrang, Betul Oil, Dhanuka, Divya Jyoti, G. Ambuja, Itarsi, Indian Soya, Khandwa, Khyati, Kriti, K.P. Newari, Mahakali, M.S. Neemuch, Prakash, Oyster Exim, Prestige, Ruchi, Rama, RH Solvex, SSA Mandideep, Shanti Overseas, Sawariya Itarsi, Sitashri, Vippy (10-2-2 specification) for Dewas and Mandsaur delivery during the week.

Previous Update

Higher soybean supplies mean increase in crushing and eventually availability of more soy meal, which if not exported in time will lead to huge disparity in crushing.

India's domestic soy meal consumption is around 5 million tonnes and the production is expected to be 8 million tonnes, the surplus 3 million needs to be exported for the good crush market during the season.

The lower soy meal prices have increased the exports prospects which is expected to recover this season, after 3-years of weak soy meal exports of Indian origin. The oilseeds processors want the meal prices to be lower so that the soy meal exports window remains open for some more time, especially when India has produced higher soybean this season.

The soybean supplies continued to be higher not only in Madhya Pradesh but also in the key cash markets of Maharashtra and Rajasthan.

The domestic soybean prices are likely to feature range-bound movement with firm bias on fresh buying by the solvent extractors and stockists. However, higher soybean production this season, weak soy meal export sales will limit the gains in soybean in near-term.

International:

The CBOT soybean fell on expectation of record South American soybean crop, chart-based selling, advancing Brazil's soybean harvesting along with forecast of dry weather in Brazil.

The CBOT soybean declined and the March contract soybean prices ended at US \$ 10.32/bushel compared to US \$ 10.59/bushel last week.

US soybean crushers crushed higher than the market expectations in January, third highest January crush on record, said National Oilseed Processors Association.

NOPA reported that its members have processed 160.621 million bushels during January, up from 150.453 million bushels during the corresponding period last year and also up from 160.176 million bushels in December 2016.

The US soyoil inventories of January 31 surged to 1.629 billion lbs from 1.582 billion lbs in January 2016 and also from 1.434 billion lbs at the end of December.

Brazil's 2016/17 soybean crop harvest has reached 26% of the total planted area by February 16. The figure is up 23% from the corresponding period last year and up 19% from last week estimated by AgRural.

The harvesting in Mato Grosso have reached 52% of the total state area and stands as a leader, but down from 44% last week due to rains which hampered the harvesting in the region.

AgRural consultancy has raised its Brazil's 2016/17 soybean production forecast on 3 Feb. 2017 to 105.4 million tonnes from 103.1 million tonnes projected previous month.

Brazil's 2016/17 soybean production is projected at 104.6 million tonnes against 101.7 million tonnes projected in December by Abiove.

Abiove has estimated Brazil's 2017 soy exports at 58.7 million tonnes compared to 58 million projected in December.

Brazil had exported 51.58 million tonnes of soybean in 2016 up from Abiove's December estimate of 51.7 million tonnes.

Rosario grains exchange has raised Argentina's 2016/17 soybean crop production estimate at 54.5 million tonnes up from its previous estimate of 52.9 million tonnes on improved yield potential, which has offset the decline in the planted area this season.

Argentina is forecast to harvest 54.8 million tonnes of soybean in 2016/17, said Buenos Aires Grains Exchange. The agency has raised the figure from its previous forecast of 53.5 million tonnes on improved weather in the country.

EU 2016/17 season soybean imports have reached 8.2 million tonnes by February 14. The volume is down 4% from 8.63 million tonnes at the corresponding period last season.

Previous updates:

Agroconsult has raised Brazil's 2016/17 soybean production estimate up to 105.3 million tonnes compared to 104.4 million predicted in early January.

The consultancy said it could further raise the production estimate after analyzing the recently collected data on productivity after the crop tour.

Rosario Grains Exchange has raised its Argentina's 2016/17 soybean production estimate to 54.5 million tonnes up from its previous forecast of 52.9 million citing higher yield potential.

World exports of soybean were boosted by 23 million tonnes in the past 24 months. Soybean shipments of 5 top producing countries surged by 1.4 million tonnes in January'17, said Oil World.

Chinese soybean imports for Jan/Mar. 2017 are expected to be up by 3.0 million tonnes from the corresponding period last year, reports Oil World.

Safras and Mercado have projected its Brazil's 2016/17 soybean production estimated at record 107.1 million tonnes up 10.2% from previous season.

The rise in production is attributed to favorable weather which has boosted the yield potential mainly in Midwest and Southeast.

The harvest in Mato Grosso is expected to stand at 30.06 million tonnes, 9% above previous season. In the state of Parana it is expected 17.8 million tonnes, up 7%. In Rio Grande do Sul, the harvest is likely to reach 16.5 million tonnes, up 1% from 2015/16.

Informa Economics has raised Brazil's 2016/17 soybean crop and kept Argentina's production estimate unchanged.

In the monthly report Informa has raised Brazil's 2016/17 soybean to 106.5 million tonnes, up 105 million in its previous estimate in December.

It has kept the Argentina's 2016/17 soybean production unchanged at 55.0 million tonnes.

INTL FC Stone has raised its Brazil's 2016/17 soybean production estimate to 104.1 million tonnes which is up from 102.8 million estimated in the January.

The Rosario Grain Exchange has slashed Argentina's soybean production forecast to 52.9 million tonnes from its earlier forecast of 54.4 million tonnes.

Global soybean outturn in 2016/17 is seen at 334 million tonnes, down from a previous projection of 336 million but still a record high, reported in IGC.

Informa Economics has slashed its US 2017 soybean plantings to 88.647 million acres from 88.862 million acres projected in December.

This is after the rise in US 2017 corn planting projections to 90.489 million acres from 90.151 million acres in the previous month.

Conab, the Brazilian government agency, has raised Brazil's 2016/17 soybean production forecast to 103.8 million tonnes from its December forecast of 102.45 million tonnes.

The raise is attributed to the favorable weather which has boosted the yield.

Brazil's 2015/16 soybean production stood at 95.4 million tonnes, when the production was hit due to the dry weather conditions.

Further Brazil is likely to export 57 million tonnes of soybean in 2016/17 compared to 51.6 million tonnes in 2015/16.

After AgRural and Conab, Agroconsult has raised the Brazil's 2016/17 soybean production projection to 104.4 million tonnes from 102.6 million tonnes estimated in November.

The raise is attributed to favorable weather conditions which helped boost the yield potential.

Brazil's 2015/16 soybean production fell due to the unfavorable weather condition and the country could harvest only 96.3 million tonnes of soybean.

Argentina's 2016/17 soybean production is expected to stand at 56 million tonnes against 58.8 million tonnes produced in 2015/16, said agriculture ministry.

China's total soybean imports in 2016 stood at 83.9 million tonnes which is up 2.7% from 2015. This was the smallest growth registered in years due to slowdown in China's economy and rise in country's own soybean production and sales from state inventories.

Buenos Aires Grain Exchange has lowered Argentina's 2016/17 soybean planting estimate to 19.3 million hectares from its previous forecast of 19.6 million. Fall in area is attributed to the dry weather in Southeast Buenos Aires province. Argentina's 2015/16 area under soybean was reported at 20.1 million hectares

Conab, the Brazil's government crop supply agency has forecast Brazil's 2016/17 soybean production at 102.45 million tonnes, up 7% from the last season.

China is estimated to import 86 million tonnes of soybean in 2016/17 season, which will be highest ever.

Brazil's soy group Abiove has projected country's soybean exports at 58 million tonnes of soybean in 2017.

The group has estimated 2 million tonnes of additional soy meal production from March 2017 on biodiesel blend.

It has projected Brazil's 2016/17 soybean crop at 101.7 million tonnes and 41 million tonnes of soybean crush in 2017.

China's 2016/17 soybean imports growth are expected to slow down on higher state reserve or inventories and increase in China's soybean production this season.

China's soybean production is up 13% to 13.1 million tonnes, highest in last 5 years, reported by China National Grain and Oils Information Center (CNGOIC).

China's soybean imports slowed down due to its higher state soy inventories.

Paraguay's area under soybean is expected to increase in 2016/17 due to favorable soy prices and expected better returns. Production is forecast up at 8.6 million tonnes compared to 6.4 million tonnes last season.

The international soybean prices are expected to feature range bound movement with firm bias on strong export demand for US soybean and strength in crude oil.

Soy meal

The domestic soy meal fell on higher supply outlook after increase in India's soybean production this season. However, improved overseas demand for soy meal of Indian origin limited the losses.

Further, the domestic soy meal demand continued to remain dull on feeble demand in the poultry.

Further, soy meal witnessed fall in the international market and the March CBOT soy meal settled at US \$ 339 per short ton compared to US \$ 342 per short ton last week.

The meal exporters are keen in keeping the meal prices attractive for the foreign buyers and to keep the exports window open and compete with the South American meal prices, for some more time.

India's meal exports are expected to ease once the new crop crushing and exports picks up the pace in Argentina and Brazil.

Brazil's soybean crop harvesting is underway and it has gained momentum as discussed above. Argentina's soybean harvesting is expected to commence within a fortnight.

India's soy meal exports are up consistently y-o-y. In January'17 soy meal exports surged 446% after it registered a gain of 736% in December 2017.

The domestic soy meal prices at Indore, fell and were quoted at Rs 22,800 – 23,400/MT compared to Rs 23,200 – 23,700/MT compared to previous week.

At Latur and Nanded, Maharashtra, soy meal witnessed steady to weak tone and were quoted at Rs 23,500/MT and 23,200/MT respectively compared to Rs 22,800/MT in Indore and Rs 23,100/MT in Kota.

NOPA report reveals that the US soy meal shipments stood at 891,143 tons up from 686,493 tons during the corresponding period last year but down from 949615 tons in December 2016.

EU soy meal imports July – June 2016/17 season reached 11.3 million tonnes down 15% from 13.4 million during the corresponding period last year.

Previous Updates

India is expected to produce 8 million tonnes of soy meal this season. Out of which 5 million tonnes will be consumed domestically but another 3 million must be shipped overseas, failing which, the disparity on crushing soybean will increase.

India's forward booking for soy meal are better than the corresponding period last year, further sharp fall in the export prices in recent weeks in soy meal have made the imports from India lucrative.

The meal prices are unlikely to post sharp gains to keep the exports window open at least for the period when India's soybean crushing is at a higher pace for first 4 - 5 months (Oct-Feb) of the new marketing season.

Higher domestic soybean production in 2016/17 will eventually increase the soybean crushing which will further increase the availability in soy meal this season.

We expect India's soy meal exports to recover slightly in the new season with higher 2016/17 soybean production leading to higher crushing eventually increasing the meal supplies.

India's 2016/17 soy meal exports are expected to witness 3 year high and expected to jump 2 million tonnes from 2,61,051 exported last year, stated industry officials.

The exporters have contracted to ship around 500,000 tonnes soy meal for December-March delivery.

However, currently the domestic soy meal demand is sluggish due to weak demand from poultry owing to fall in poultry demand after demonetization.

India's soy meal and its other value added products (HS Code 2304) during January 2017 is 1,55,164 tons compared to 28,398 tons in January 2016 showing an increase of 446.38% over the same period of last year.

On a financial year basis, the export during April'2016 to January'2017 is 6,01,294 tons as compared to 3,30,702 tons in the same period of previous year showing an increase of 81.82%.

During current Oil year, (October – September), total exports during October 2016 to January 2017 is 5,25,562 tons as against 1,29,174 tons last year, showing an increase by 306.86%, as reported by SOPA.

Japan (47703.830 MT), Bangladesh (44100.000 MT), France (35700.000 MT), Myanmar (12451.030 MT) and Indonesia (6435.000 MT) remained the top buyers of the soy meal of Indian origin during the month of January 2017.

Recovery in exports is primarily due to drastic fall in the Indian soy meal prices making it price competitive to South America.

Indian meal prices need to be highly competitive against the South American and China's meal prices to regain the lost markets it lost in previous seasons.

Preference of the soy meal of Indian origin mainly by the South-East countries due to logistic and freight advantage and demand for non-GMO meal has lost the ground owing to much higher soy meal price of Indian origin compared to the South American meal. Iran, Japan, Europe, Thailand, Vietnam, Indonesia and South Korea were the major destinations for Indian soy meal exports, whose demand shifted to South America.

India's Y-o-Y soy meal prices, Indore, are currently lower. Soy meal Indore was quoted lower between Rs 22,800 – 23,400/MT during the week compared to Rs 33,300 – 33,500/MT during the corresponding period last year.

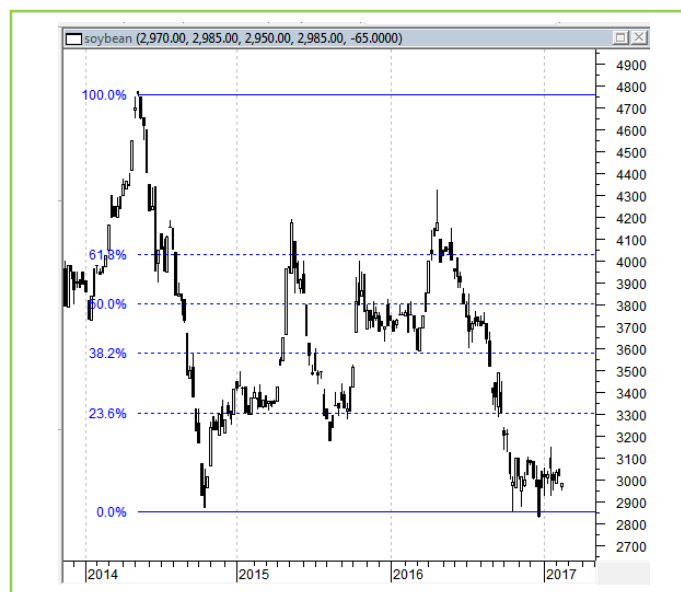
The soy meal prices are likely to feature range-bound movement with firm-bias on likely fresh buying by the poultry and feed manufacturing industry. However, higher domestic and international soybean production will limit the gains market, in near-term.

Technical Analysis:

NCDEX Soybean Futures



Soybean Spot, Indore



*Note: Daily Chart

Support & Resistance NCDEX Soybean – Mar. contract

S1	S2	PCP	R1	R2
2850	2800	2951	3132	3230

- Soybean extended previous week's losses in the market.
- Prices closed below 18-day EMA.
- RSI and stochastic are falling in the neutral zone.
- MACD is easing in the negative territory.
- The prices are expected to feature losses in the coming week too.
- Trade Recommendation (NCDEX Soybean – Mar.) Week: **SELL** Below 3050. Levels: T1 – 2950; T2- 2900, SL - 3110.

Rapeseed - Mustard Seed

The domestic rapeseed-mustard witnessed season fall in the prices with new crop supplies gaining momentum, during the week under review.

The domestic rapeseed-mustard harvesting has commenced in the key growing states of Rajasthan, UP, Madhya Pradesh and Punjab and the new seed supplies are exerting pressure on the seed market.

The standing mustard seed crop is mostly under maturity phase and the harvesting is picking up the pace. We feel the new crop supplies will peak in the month of April when spot prices will test the lowest in the season.

The new crop seed is quoted around Rs 4,000 – 4,015 a quintal compared to Rs 4,460 – 4,570 a quintal during the corresponding period last year at the benchmark, Jaipur.

The all India seed supplies surged to 1.25 – 1.30 lakh bags compared to around 30,000 – 40,000 bags in the previous week.

India's final official figure India's rapeseed-mustard sowing is reported up by 9.3% at 70.56 lha compared to 64.53 lha during the corresponding period of last year.

India is expected to produce around 7.0 million tonnes of rapeseed-mustard in 2016/17 with an average yield of about 1000 kg/ha compared to 5.8 million in 2015/16.

At NCDEX - futures the April contract is trading around 3788/Qtl compared to 3818/Qtl previous week.

India's edible oil imports are consistently falling m-o-m on improved domestic oilseeds crushing.

India's January edible oil imports fell 19.7 percent y-o-y to 10.08 lakh tons from 12.55 lakh tons in January 2016. Palm oil imports fell 11.5 percent y-o-y to 6.08 lakh tons y-o-y from 6.88 lakh tons in January 2016. CPO Imports fell 23 percent y-o-y to 4.08 lakh tons from 5.30 lakh tons in January 2016. RBD palmolein imports rose 30.7 percent y-o-y to 1.97 lakh tons from 1.50 lakh tons in January 2016. Soy oil imports fell 62 percent y-o-y to 1.67 lakh tons from 4.41 lakh tons in January 2016. Sunflower oil imports rose 27.1 percent y-o-y to 2.15 lakh tons from 1.18 lakh ton in January 2016. Rapeseed (Canola) oil imports rose 134 percent y-o-y to 0.18 lakh tons from 0.07 lakh tons in January 2016, reported by Solvent Extractors Association (SEA).

India's January edible oil stocks at ports and pipelines fell 6.6% m-o-m to 17.30 lakh tons from 18.45 lakh tons in December 2016. Stocks of edible oil at ports fell to 642,000 tons (CPO 220,000 tons, RBD Palmolein 150,000 tons, Degummed Soybean Oil 180,000 tons, Crude Sunflower Oil 85,000 tons and 7,000 tons of Rapeseed (Canola) Oil) and about 1,088,000 tons in pipelines (stocks in pipelines were at 1,150,000 tons in December 2016). India is presently holding 32 days of edible oil requirement on 1st February, 2017 at 17.80 lakh tons compared to 34 days of requirements last month. India's monthly edible oil requirement is 16.5 lakh tons

Malaysia's February 1 – 15 palm oil exports fell 3.6 percent to 501,748 tons compared to 520,332 tons exported during Jan. 1 – 15. Top buyers were European Union at 45,700 tons (67,015 tons), China at 79,500 tons (82,550 tons), Pakistan at 24,000 tons (14,000 tons), United States at 37,130 tons (18,750 tons) and India at 58,290 tons (50,300 tons). Values in brackets are figures of Jan. 1 – 15 reported cargo surveyor Societe Generale de Surveillance (SGS).

Malaysia increased March crude palm oil export duty to 8 percent from 7.5 percent in February. Tax is calculated at reference price of 3,337.30 ringgit (\$748.95) per ton. Tax is calculated above 2,250 ringgit starting from 4.5 percent to a maximum of 8.5 percent, said Malaysia Palm Oil Board (MPOB).

Malaysia's palm oil stocks declined to their lowest volume in 5-months at the end of January 2017. The fall is attributed to fall in the production and rise in exports in 5-months.

However, the inventories remained higher than the market/industry expectations.

The January palm oil inventories fell to 7.6% to 1.54 million tonnes, reportedly first month-on-month fall since August, reported by Malaysian Palm Oil Board (MPOB).

The fall in inventories supported the Malaysian palm oil prices at higher levels at BMD.

According to Indonesia Palm Oil Association, Indonesia's 2017 crude palm oil production is estimated to rise 12.7 percent to 35.5 MMT compared to 31.1 MMT in 2016. Heavy rains in 2016 will support palm oil production and growth in plantation in 2013 will bear fruit in 2017.

Malaysia's palm oil production in 2017 is estimated to rise 12 percent to 19.4 MMT from 17.4 MMT in 2016. Exports of palm oil in 2017 from Malaysia will increase 11.2 percent to 17.85 MMT from 16.05 MMT in 2016. CPO prices are expected to remain firm in 2017, according to the board, said the Malaysia Palm Oil Board (MPOB).

Previous Updates

Indonesia is expected to produce 32-33 MMT of palm oil in 2017 compared to estimated production of 28.5-30 MMT in 2016, higher by 16 percent y-o-y. Production in 2015 was 33 MMT. Wet condition in 2016 in Indonesia is primary reason for higher production in 2017. Exports are expected to grow to 23-25 MMT in 2017 compared to 23 MMT estimated in 2016. Palm oil prices rose in 2016 due to lower stocks of palm on El Nino, crude oil prices and biodiesel mandates in Indonesia and Malaysia, said Indonesia Palm Oil Association (GAPKI).

India's rapeseed-mustard is driven by Malaysian palm oil, India's edible oil imports and Chinese vegoil demand.

Outlook: The rapeseed-mustard is expected to witness downward movement higher domestic seed production after rise in the acreage under the seed, upcoming new marketing season and better kharif oilseeds production and their supplies.

Technical Analysis:

NCDEX RM Seed Futures



*Note: Daily Chart

RM Seed Spot, Jaipur



Support & Resistance NCDEX RM Seed – Apr. contract

S1	S2	PCP	R1	R2
3700	3670	3786	3880	3957

- RM seed continued downtrend, during the week.
- Prices closed below 18-day EMA.
- RSI and stochastic are falling in the neutral zone.
- MACD is falling in negative territory.
- The prices are expected to feature losses during the week.
- Trade Recommendation (NCDEX Rapeseed-Mustard – Apr.) Week: **SELL** Below 3890. Levels: Target – 3790; T2- 3740, SL – 3950.

Annexure

Oilseed Prices at Key Spot Markets:

Commodity / Centre	Prices (Rs/Qtl)				Change
Soybean	17-Feb-17		10-Feb-17		
	Low	High	Low	High	
Indore –Plant	2970	3000	3000	3100	-100
Indore–Mandi	2700	2900	2750	2950	-50
Nagpur-Plant	2850	2980	2900	3030	-50
Nagpur – Mandi	2550	2800	2550	2740	60
Latur – Mandi	2650	2962	2560	2900	62
Kota-Plant	2925	2975	2950	3000	-25
Kota – Mandi	2800	2850	2900	2950	-100
Bundi-Plant	2950	3000	3020	3025	-25
Bundi-Mandi	2850	2900	2900	2950	-50
Baran-Plant	2750	2880	2800	3020	-140
Baran-Mandi	2800	2850	2820	2925	-75
Bhawani Mandi Jhalawar–Kota-Plant Delivery	2700	2925	2900	3030	-105
Jhalwar-Mandi	2850	2900	2900	2975	-75
Rapeseed/Mustard					
Jaipur-(Condition)(New Crop)	4010	4015	4155	4160	-145
Alwar-(Condition)	3800	3900	3800	3900	Unch
SriGanganagar-(Non-Condition-Unpaid)	3400	3500	3500	3600	-100
New Delhi–(Condition)(New Crop)	3900	3950	4050	4100	-150
Kota-Non-(Condition)(New Crop)	3350	3460	3500	3550	-90
Agra-(Condition)(New Crop)	4100	4175	4500	4575	-400
Neewai	3675	3700	3800	3850	-150
Hapur (UP)(New Crop)	3700	3725	3950	4000	-275
Groundnut Seed					
Rajkot	831	831	843	843	-12
Sunflower Seed					
Gulbarga	2850	3202	3052	3404	-202
Latur	NA	NA	NA	NA	-
Sholapur(New Crop)	NA	NA	NA	NA	-
Sesame Seed					
Mumbai (White98/2/1	6900	6900	6800	6800	100

Soybean Prices are in INR/Qtl. Mandi prices – Loose, Mustard Seed Prices are in INR/Qtl.C –Condition (42%),

*Groundnut seed in Rs/20 kg, Sunflower Seed in Rs/Qtl

Oilseed Arrivals in Key Centers:

Commodity	Centre	Arrivals in Bags/Qtl		Change
		13th Feb to 17th Feb 2017	4th Feb to 10th Feb 2017	
Soybean				
	Madhya Pradesh	695000	785000	-90000
	Maharashtra	582000	765000	-183000
	Rajasthan	244000	125000	119000
	Bundi (Raj)	1000	Closed	-
	Baran (Raj)	12700	Closed	-
	Jhalawar (Raj)	9800	Closed	-
Rapeseed/Mustard	Rajasthan	180000	NA	-

India's Oilseeds Production Seen Record at 33.6 Mn T vs 25.3 Mn in 2nd Adv Est. - GOI

The 2nd Advance Estimates of production of oilseeds for 2016-17 have been released by the Department of Agriculture, Cooperation and Farmers Welfare on 15th February, 2017. The assessment of production of different crops is based on the feedback received from States and validated with information available from other sources.

The estimated production of major Oilseeds during 2016-17 is as under:

Oilseeds – 33.60 million tonnes (record) in 2016/17 vs 25.3 million tonnes in 2015/16

- Soyabean – 14.13 million tonnes vs 8.6 million tonnes in 2015/16
- Groundnut – 8.47 million tonnes vs 6.33 million tonnes in 2015/16
- Castorseed – 1.74 million tonnes vs 1.75 million tonnes in 2015/16

With an increase of 8.35 million tonnes over the previous year, total Oilseeds production in the country is estimated at record level of 33.60 million tonnes. It is higher by 0.85 million tonnes than the previous record production of 32.75 million tonnes achieved during 2013-14.

The production of Oilseeds during 2016-17 is also higher by 4.34 million tonnes than the five year's average Oilseeds production. The current year's production is significantly higher than the production of 25.25 million tonnes during 2015-16.

MSP for 2016/17 Kharif Oilseeds

The Cabinet Committee on Economic Affairs, chaired by the Prime Minister Shri Narendra Modi, has given its approval for Minimum Support Prices (MSPs) for Kharif Crops of 2016-17 season, the MSPs of all the Kharif oilseeds are raised for this season.

The MSP of Yellow Soybean is increased by 6.7% to Rs. 2775/Qtl (including Rs 100 bonus) for 2016-17 season from Rs.2600/Qtl in 2015-16, Groundnut -in- shell by 4.7% to Rs. 4220/Qtl (including Rs 100 bonus) from Rs 4030/Qtl, Sunflower seed by 3.9% to Rs 3950/Qtl (including Rs 200 bonus) from Rs 3800/Qtl, Nigerseed by 4.8% to 3825/Qtl (including Rs 100 bonus) from Rs 3650/Qtl and Sesamum by 6.4% to Rs 5000/Qtl (including Rs 200 bonus) from Rs 4700/Qtl.

MSP for 2016/17 Rabi Oilseeds

The Cabinet Committee on Economic Affairs has approved the Minimum Support Prices (MSPs) for Rabi Oilseeds Crops of 2016-17 season are as follows: The MSP of Rapeseed/Mustard is raised (10.4%) by Rs. 350/Qtl to Rs. 3,700/Qtl from Rs. 3,350/Qtl earlier. For Safflower too it is increased (12.1%) by Rs. 400/Qtl to Rs. 3,700/Qtl from Rs. 3,300/Qtl in 2014-15. Further, to incentivize cultivation of oilseeds, the Cabinet has decided to give a bonus of Rs 100/- per quintal each for Rabi oilseeds including Rapeseeds/Mustards and Safflower, over and above the recommendations of the CACP.

Disclaimer

The information and opinions contained in the document have been compiled from sources believed to be reliable. The company does not warrant its accuracy, completeness and correctness. Use of data and information contained in this report is at your own risk. This document is not, and should not be construed as, an offer to sell or solicitation to buy any commodities. This document may not be reproduced, distributed or published, in whole or in part, by any recipient hereof for any purpose without prior permission from the Company. IASL and its affiliates and/or their officers, directors and employees may have positions in any commodities mentioned in this document (or in any related investment) and may from time to time add to or dispose of any such commodities (or investment). Please see the detailed disclaimer at <http://www.agriwatch.com/Disclaimer.asp>
© 2017 Indian Agribusiness Systems Pvt Ltd.