

# Oilseeds Weekly Research Report

## Contents

- ❖ Executive Summary
- ❖ Outlook – Cash Market
- ❖ AW Oilseeds Index
- ❖ International Highlights
- ❖ Planted Area
- ❖ Soybean – Domestic & International
- ❖ Soy meal
- ❖ Technical Analysis - Soybean
- ❖ Rapeseed - Mustard
- ❖ RM Seed Supply, Rajasthan
- ❖ Technical Analysis – RM Seed
- ❖ Annexure – Prices etc.

## Executive Summary

---

Soybean and soy meal witnessed steady to slightly firm tone on consistent flat demand while rapeseed-mustard featured losses on increasing new crop supplies with harvesting in full swing, during the period under review.

The soybean arrivals have slightly fallen from the recent daily average and soy meal exports have recovered the lost ground as expected.

India's February soy meal exports witnessed a surge of 594% y-o-y which remained supportive to some extent. However, the meal and bean prices are still low with attractive soy meal exports price.

The domestic soy meal demand continued to be weak due to slack in poultry demand.

The rapeseed-mustard harvesting is in full swing, which has consequently increased the seed supplies in recent weeks at the key market centers.

The rapeseed-mustard is to witness further fall on rising new crop supplies and higher production estimate this season. Besides, soybean will continue to remain under supply pressure in near-term.

## Outlook – Cash Market

---

**Outlook - Soybean (Spot, Indore):** The soybean prices will continue to reel under supply pressure and limited demand. Higher domestic soybean production this season, weak record global soybean production continued to be pressurizing factor for the domestic soybean. However, better soy meal exports will lend some support in coming days. The prices are expected to feature range bound movement between the price band of 2,900 – 3,100 level (Indore, Plant basis).

**Outlook – Soy meal:** Soy meal prices are expected to feature rebound movement during the week. Expectation of higher crushing on good soybean production continues to be a pressurizing factor for the domestic soy meal. Indian meal exporters are advised to explore new markets and aggressively try to regain the lost markets of peak exports season especially traditional South and Far-East Asian destinations including Japan in the upcoming season. The domestic meal prices are likely to remain under new crop supply pressure and feature range bound movement in near-term. However improved overseas demand in meal will lend some support to the prices. Soy meal, Indore is expected to be in the range of 23,000 – 24,000/MT levels during the week.

**Outlook - Rapeseed-Mustard (Spot, Jaipur basis):** The rapeseed-mustard continued downtrend on new crop supply pressure in the seed during the week in review. Expectation of higher seed production after increase in the area under rapeseed this season and upcoming new marketing season will continue to pressure the seed further. The seed prices are likely to feature weakness and witness the levels between 3,800 – 3,860/Qt; levels during the week.

## International Highlights

---

- ❖ US 2017 soybean seeding is seen up at 88 million acres compared to 83.4 million in 2016 while corn area is reduced to 90 million acres from 94 million in 2016, projected by USDA.
- ❖ Agroconsult has projected Brazil's 2016/17 soybean production at 107.8 million tonnes up from 105.3 million projected initially in February. The agency has estimated Brazil's 2016/17 soy exports at 61.1 million tonnes.
- ❖ Argentina's Agriculture Ministry has slashed its estimate for planted soybean to 19.45 million hectares from 19.8 million hectares estimated previously.
- ❖ Safras and Mercado has projected its Brazil's 2016/17 soybean production estimate at record 107.1 million tonnes up 10.2% from previous season.
- ❖ In the monthly report Informa has raised the Brazil's 2016/17 soybean to 106.5 million tonnes, up 105 million in its previous estimate in December.
- ❖ The Rosario Grain Exchange has slashed the Argentina's soybean production forecast to 52.9 million tonnes from its earlier forecast of 54.4 million tonnes.
- ❖ Global soybean outturn in 2016/17 is seen at 334 million tonnes, lower than a previous projection of 336 million but still a record high, reported in IGC.
- ❖ Informa Economics has raised its projection for the U.S. 2017 soybean planting at 88.612 million acres surpassing the record high of 83.17 million acres planted in 2016. The projected U.S. 2017 area under corn is slashed to 90.841 million acre from 90.971 million previously, which will divert to soybean.
- ❖ FCStone has raised its forecast for US 2016 soybean productivity to a record 52.8 bushels per acre from 52.5 in its October report.
- ❖ U.S. Environmental Protection Agency (EPA) increased US biodiesel production target by 6.5 percent in 2017 to 19.28 billion gallons compared to previous mandate of 18.11 billion gallons. Conventional biodiesel use is raised to 15 billion gallons which is mainly corn based biodiesel. Remaining 4.28 billion gallons is set for advanced biodiesel mandate where soy oil is the major contributor. This step will decrease soy oil end stocks in US.

- ❖ Brazil's 2016/17 soybean production is projected at 106 million tonnes by CRF, the production is much higher than the previous season (96.4 Mn T), when Brazil was hit by drought during the soybean crop development stage.
- ❖ Brazil's 2017 soybean exports are projected at 60 million tonnes which is up from 51-52 million estimated for the current marketing year 2016, reported by the National Association of Exporters of Cereals (ANEC).
- ❖ Further, CRF has projected Paraguay's soybean production at 8.6 million tonnes against 6.4 million tonnes produced last year.
- ❖ Abiove has forecast Brazil's 2017 soybean production at record 101.3 million tonnes compared to 96 – 98 million tonnes estimated for 2016 by various agencies. Abiove has estimated that Brazil will be able to export 57 million tonnes of soybean in 2017.
- ❖ Argentina's 2016/17 soybean production is expected to stand at 56 million tonnes against 58.8 million tonnes produced in 2015/16, said agriculture ministry.
- ❖ Argentina postpones its decision to slash the soy export taxes for this year and 2017. The Argentine government has decided to ease the tax by 0.5% per month from January 2018 to December 2019, stated the President Mauricio Macri.
- ❖ Macri had already cut the export tax from 35% to 30% in December shortly after Macri was elected as President and taking over the office.
- ❖ Argentina's government has raised its 2015/16 soybean crop to 58 million tonnes from its previous forecast of 57.6 million tonnes followed by faster than expected recovery of area considered lost to floods hit area in Argentina.
- ❖ Rosario Gains Exchange has revised its forecast for Argentina's 2015/16 soybeans up to 55.3 million tonnes from 55 million tonnes previously. This is despite severe crop damage after flood in April.
- ❖ Abiove has trimmed Brazil's 2015/16 soybean crop to 96.6 million tonnes (during Feb. – Jan.) from 97.3 million projected earlier. It has lowered Brazil's soybean exports estimate to 53 million tonnes from 53.8 million tonnes. Brazil had shipped 54.3 million tonnes in previous season.
- ❖ World supplies of soybeans are likely to increase sharply by 19 Mn T in 2015/16, despite a global prospective production decline by 3 Mn T, leading to another above-average increase in soybean crushing, reports Oil World.

- ❖ FCStone has increased Brazil's 2015/16 soybean production forecast to 98.6 million tonnes from 98 million tonnes in its previous estimates.
- ❖ Again, Informa has raised its forecast for Brazil's 2015/16 soybean production in its monthly report to 101.3 million tonnes from 100.5 million tonnes last month. It has lowered Argentina's 2015/16 soybean production forecast to 59.0 million tonnes from 60.0 million tonnes in February.
- ❖ Brazil's Congress has passed a bill that will increase the country's biodiesel blend from its current 7% to 10% over the next three years.
- ❖ AgRural has increased its forecast for Brazil's 2015/16 soybean to 99.7 million tonnes from 98.7 million after beneficial rains.
- ❖ Rosario Grains Exchange has raised Argentina's 2015/16 soybean production forecast to 59 million tonnes from 58.5 million tonnes in its earlier estimates. The increase is due to the higher than expected yield in the major growing belts.
- ❖ CRF reported that Argentina's soybean production is nearing last year's record of around 61 million tonnes. It also projected Paraguay 2015/16 soybean production at record 9.7 million tonnes which is above USDA's estimate of 8.8 million tonnes.
- ❖ As per the estimates by the government agency, Argentina's 2015/16 soybean production is estimated near 60 Mn T which is below last year production of 61.4 Mn T.
- ❖ China's total soybean imports in 2016 stood at 83.9 million tonnes which is up 2.7% from 2015. This was the smallest growth registered in years due to slowdown in China's economy and rise in country's own soybean production and sales from state inventories.

## Sown Area – *Rabi* Oilseeds, India

In the official Rabi oilseeds planting report, by the Ministry of Agriculture, the total coverage area under Rabi oilseeds is reported at 84.35 lakh hectares, up 6.2% from 79.42 lakh ha in the corresponding period of last year. Of the major oilseeds, rapeseed-mustard sowing is reported up by 9.3% at 70.56 lha compared to 64.53 lha during the corresponding period of last year. Groundnut at 6.16 lha vs 5.96 lha, safflower at 0.95 lha vs 1.17 lha, sunflower at 1.69 lha vs 3.21 lha, sesamum 0.57 vs 0.71 and Linseed at 3.84 lha vs 2.93 lha during the same period last year.

Area in Lakh Hectares

<b>Crop</b>	<b>2017</b>	<b>2016</b>	<b>% Change</b>
Rapeseed/Mustard	70.56	64.53	<b>9.3</b>
Groundnut	6.16	5.96	<b>3.4</b>
Safflower	0.95	1.17	<b>-18.8</b>
Sunflower	1.69	3.21	<b>-47.4</b>
Sesamum	0.57	0.71	<b>-19.7</b>
Linseed	3.84	2.93	<b>31.1</b>
Others	0.58	0.91	<b>-36.3</b>
<b>Total Oilseeds</b>	<b>84.35</b>	<b>79.42</b>	<b>6.2</b>

Source: MoA, GOI

## Soybean

---

The domestic soybean remained almost flat on steady offtake in the cash market by solvent extractors to cater improved soy meal exports commitment and strength in the international soybean, during the week under review.

However, higher domestic production and better supplies of bean kept the lid on the gains.

Currently, about 0.60 – 1.10 lakh bags of soybean are arriving in cash markets of Madhya Pradesh against 0.15 – 0.32 lakh bags during the corresponding period last year.

Slack in domestic soy meal offtake due to weak poultry demand too remained limiting factor.

Besides, cheap soy oil imports remained bearish for the bean.

However, better soy meal exports from India could lend support to bean in coming days.

The crushers are still not eager to quote higher for the bean in a bid to keep the meal prices attractive for the foreign buyers and keep the exports window open for some more time.

Currently, the bean prices are around the levels where they were at the time of harvest in October.

The rabi oilseeds has gained momentum and the oilseeds production is forecast to be higher.

***The major buyers in Madhya Pradesh are as follows: Amrit Mandsaur, Ambika Joara, Agrawal Soy Dewas, Agrawal Neemuch, Adani, Agro Sol. Datia, Avi Agro, Bansal, Bajrang, Betul Oil, Dhanuka, Divya Jyoti, G. Ambuja, Itarsi, Indian Soya, Khandwa, Khyati, Kriti, K.P. Newari, Mahakali, M.S. Neemuch, Prakash, Oyster Exim, Prestige, Ruchi, Rama, RH Solvex, SSA Mandideep, Shanti Overseas, Sawariya Itarsi, Sitashri, Vippy (10-2-2 specification) for Dewas and Mandsaur delivery during the week.***



## Previous Update

---

Higher soybean supplies mean increase in crushing and eventually availability of more soy meal, which if not exported in time will lead to huge disparity in crushing.

India's domestic soy meal consumption is around 5 million tonnes and the production is expected to be 8 million tonnes, the surplus 3 million needs to be exported for the good crush market during the season.

The lower soy meal prices have increased the exports prospects which is expected to recover this season, after 3-years of weak soy meal exports of Indian origin. The oilseeds processors want the meal prices to be lower so that the soy meal exports window remains open for some more time, especially when India has produced higher soybean this season.

The soybean supplies continued to be higher not only in Madhya Pradesh but also in the key cash markets of Maharashtra and Rajasthan.

***The domestic soybean prices are likely to feature range-bound movement with firm bias on fresh buying by the solvent extractors and stockists. However, higher soybean production this season, weak soy meal export sales will limit the gains in soybean in near-term.***

## International:

The benchmark CBOT soybean fell on record Brazilian crop outlook where USDA in its monthly demand and supply report projected Brazil's 2016/17 soybean production to a record 108 million tonnes up from 104 million estimated in its February report.

The CBOT soybean fell 2-month low and the most active contract - May soybean prices ended at US \$ 10.06/bushel compared to US \$ 10.37/bushel last week.

Almost all the international agriculture consulting agencies have raised their Brazil's soybean production estimate which varies from 104 million tonnes to 109 million tonnes.

Conab has once again raised Brazil's 2016/17 soybean crop production estimate 107.6 million tonnes which is up 2 million tonnes from its previous estimate in February 2017.

The agency has projected Brazil's 2016/17 soybean exports at 59 million tonnes compared to 51.5 million tonnes in previous estimates.

INTL FCStone have raised Brazil's 2016/17 soybean crop production estimate by 5 million tonnes to 109.7 million tonnes from its previous estimate and about 15 million tonnes from its previous season's estimate.

The raise is attributed to higher yield potential on favourable weather.

Brazil's 2016/17 soybean production is projected at 109.65 million tonnes compared to 105.02 million tonnes in February by Celeres.

Besides, FC Stone has also increased the Brazil's 2016/17 soybean production estimate at 109.07 million tonnes, up by 15 million compared to the previous season. Record output yield potential this season is attributed to the rise in the production estimate.

AgRural has also raised the Brazil's 2016/17 soybean crop production estimate at 107 million tonnes against 105.4 million projected in February.

Brazil's 2016/17 soybean harvest is 56% complete in the second week of March, up from 52% during the corresponding period last year and 47% for the 5-year average, said consultancy AgRural.

The harvesting in the largest producing state Mato Grosso is sharply ahead of the other states and have reached 88% compared to 70% normal.

Soybean cultivators have sold 45% of the crop so far.

However, USDA kept its Argentina's 2016/17 soybean production estimate unchanged at 55.5 million tonnes.

Besides, Buenos Aires Grains Exchange its Argentina's 2016/17 harvest estimate steady at 54.8 million tonnes.

China's February soybean imports surged by 23% year-on-year to 5.54 million tonnes it is the highest volume since the year 2010, according to the figures released by the General Administration of Customs of China.

However, the imports are 28% lower from 7.66 million tonnes in January this year.

China's cumulative soybean imports for January and February 2017 stood at 13.19 million tonnes, up 30% (10.17 million tonnes) from the corresponding period last year.

China, the world's largest soybean buyer, is now expected to import 87 million tonnes this year, up from the 86 million that USDA issued last month. This is an all-time high for the country, which imported 83.23 million tonnes of soybeans last year.

USDA has projected China's 2016/17 soybean imports to 87 million tonnes in the monthly demand and supply report which is up from 86 million estimated in February report.

The import volume is all-time high for China which imported 83.23 million tonnes in 2015/16.

Chinese agribusiness group New Hope and Cargill are jointly installing soybean crushing unit in the China's Hebei province with a daily crush capacity of 50,000 tonnes.

EU soybean imports fell 4% by 7 March 2016/17 and registered imports of 8.9 million tonnes from 9.2 million acres during the corresponding period last season.

EU soy meal imports during Jul. – Jun. 2016/17 season stood at 12 million tonnes, down 17% from 14.5 million tonnes during the corresponding period last year.

Around 3000 trucks and 11 ships are stranded on highway and port respectively as the rains have washed out roads disrupting trucks carrying soybean to key ports for exports.

However, forecast of record soybean crop in the Brazil and bumper global bean supplies along with technical selling limited the gains.

Brazil's 2016/17 soybean crop production is forecast at 105 million tonnes which is up from 95.4 million tonnes estimated in 2015/16 by Oil World.

Brazil is expected to export around 52.3 million tonnes during February/August 2017 against 47.8 million tonnes in the corresponding period last year.

Informa Economics has also raised its Brazil's 2016/17 soybean production estimate to 108 million tonnes from 106.5 million tonnes projected previously.

Informa has projected Argentina's 2016/17 soybean crop at 55.0 million tonnes.

US 2017 soybean seeding is seen up at 88 million acres compared to 83.4 million in 2016 while corn area is reduced to 90 million acres from 94 million in 2016, projected by USDA.

Agroconsult has projected Brazil's 2016/17 soybean production at 107.8 million tonnes up from 105.3 million projected initially in February.

The agency has estimated Brazil's 2016/17 soy exports at 61.1 million tonnes.

Argentina's Agriculture Ministry has slashed its estimate for planted soybean to 19.45 million hectares from 19.8 million hectares estimated previously.

US soybean crushers crushed higher than the market expectations in January, third highest January crush on record, said National Oilseed Processors Association.

NOPA reported that its members have processed 160.621 million bushels during January, up from 150.453 million bushels during the corresponding period last year and up from 160.176 million bushels in December 2016.

The US soyoil inventories of January 31 surged to 1.629 billion lbs from 1.582 billion lbs in January 2016 and from 1.434 billion lbs at the end of December.

---

**Previous updates:**

---

Brazil's 2016/17 soybean production is projected at 104.6 million tonnes against 101.7 million tonnes projected in December by Abiove.

Abiove has estimated Brazil's 2017 soy exports at 58.7 million tonnes compared to 58 million projected in December.

Brazil had exported 51.58 million tonnes of soybean in 2016 up from Abiove's December estimate of 51.7 million tonnes.

Rosario grains exchange has raised Argentina's 2016/17 soybean crop production estimate at 54.5 million tonnes up from its previous estimate of 52.9 million tonnes on improved yield potential, which has offset the decline in the planted area this season.

Agroconsult has raised Brazil's 2016/17 soybean production estimate up to 105.3 million tonnes compared to 104.4 million predicted in early January.

Safras and Mercado have projected its Brazil's 2016/17 soybean production estimated at record 107.1 million tonnes up 10.2% from previous season.

The rise in production is attributed to favorable weather which has boosted the yield potential mainly in Midwest and Southeast.

In the monthly report Informa has raised Brazil's 2016/17 soybean to 106.5 million tonnes, up 105 million in its previous estimate.

It has kept the Argentina's 2016/17 soybean production unchanged at 55.0 million tonnes.

The Rosario Grain Exchange has slashed Argentina's soybean production forecast to 52.9 million tonnes from its earlier forecast of 54.4 million tonnes.

Global soybean outturn in 2016/17 is seen at 334 million tonnes, down from a previous projection of 336 million but still a record high, reported in IGC.

Informa Economics has slashed its US 2017 soybean plantings to 88.647 million acres from 88.862 million acres projected in December.

This is after the rise in US 2017 corn planting projections to 90.489 million acres from 90.151 million acres in the previous month.

Brazil's 2015/16 soybean production stood at 95.4 million tonnes, when the production was hit due to the dry weather conditions.

Brazil's 2015/16 soybean production fell due to the unfavorable weather condition and the country could harvest only 96.3 million tonnes of soybean.

Rosario Grains Exchange has raised its Argentina's 2016/17 soybean production estimate to 54.5 million tonnes up from its previous forecast of 52.9 million citing higher yield potential.

Argentina is forecast to harvest 54.8 million tonnes of soybean in 2016/17, said Buenos Aires Grains Exchange. The agency has raised the figure from its previous forecast of 53.5 million tonnes on improved weather in the country.

Argentina's 2016/17 soybean production is expected to stand at 56 million tonnes against 58.8 million tonnes produced in 2015/16, said agriculture ministry.

World exports of soybean were boosted by 23 million tonnes in the past 24 months. Soybean shipments of 5 top producing countries surged by 1.4 million tonnes in January'17, said Oil World.

Chinese soybean imports for Jan/Mar. 2017 are expected to be up by 3.0 million tonnes from the corresponding period last year, reports Oil World.

China's total soybean imports in 2016 stood at 83.9 million tonnes which is up 2.7% from 2015. This was the smallest growth registered in years due to slowdown in China's economy and rise in country's own soybean production and sales from state inventories.

Buenos Aires Grain Exchange has lowered Argentina's 2016/17 soybean planting estimate to 19.3 million hectares from its previous forecast of 19.6 million. Fall in area is attributed to the dry weather in Southeast Buenos Aires province. Argentina's 2015/16 area under soybean was reported at 20.1 million hectares

China is estimated to import 86 million tonnes of soybean in 2016/17 season, which will be highest ever.

Brazil's soy group Abiove has projected country's soybean exports at 58 million tonnes of soybean in 2017.

The group has estimated 2 million tonnes of additional soy meal production from March 2017 on biodiesel blend.

It has projected Brazil's 2016/17 soybean crop at 101.7 million tonnes and 41 million tonnes of soybean crush in 2017.

China's 2016/17 soybean imports growth are expected to slow down on higher State reserve or inventories and increase in China's soybean production this season.

China's soybean production is up 13% to 13.1 million tonnes, highest in last 5 years, reported by China National Grain and Oils Information Center (CNGOIC).

China's soybean imports slowed down due to its higher state soy inventories.

Paraguay's soybean production is forecast up at 8.6 million tonnes compared to 6.4 million tonnes last season.

*The international soybean prices are expected to feature range bound movement on record global supply scenario.*

## Soy meal

---

The domestic soy meal remained flat in tandem with soybean steady demand from overseas market. However, weak domestic offtake in meal due to slack in poultry demand remained limiting factor.

But, soy meal extended losses in the international market and the March CBOT soy meal settled at US \$ 325 per short ton compared to US \$ 328 per short ton last week.

India's soy meal exporters continued to keep the meal prices attractive for the foreign buyers, in a bid to keep the exports window open and compete with the South American meal prices.

India's soy meal shipments have significantly improved this season after sluggish exports in last 3 seasons.

As expected, India's soy meal exports are up y-o-y. In February'17 soy meal exports surged 594% after it registered a gain of 446% in January 2017.

India's meal exports are expected to ease once the new crop crushing and exports picks up the pace in Argentina and Brazil.

Brazil's soybean crop harvesting is underway and it has gained momentum in recent days, but disruption in logistics due to heavy rains has hit the soy exports in recent days.

It remained supportive for India's soy meal exports. Argentina's soybean harvesting is expected to commence in a couple of weeks.

The domestic soy meal prices at Indore, were quoted at Rs 23,000 – 23,500/MT compared to Rs 22,700 – 23,500/MT compared to previous week.

At Latur and Nanded, Maharashtra, soy meal witnessed steady to weak tone and were quoted at Rs 24,000/MT and 23,100/MT respectively compared to Rs 23,000/MT in Indore and Rs 23,300/MT in Kota.

NOPA report reveals that the US Jan. soy meal shipments stood at 891,143 tons up from 686,493 tons during the corresponding period last year but down from 949,615 tons in December 2016.

EU soy meal imports during Jul. – Jun. 2016/17 season stood at 11.7 million tonnes, down 15% from 13.7 million tonnes during the corresponding period last year.

## Previous Updates

---

India is expected to produce 8 million tonnes of soy meal this season. Out of which 5 million tonnes will be consumed domestically but another 3 million must be shipped overseas, failing which, the disparity on crushing soybean will increase.

India's forward booking for soy meal are better than the corresponding period last year, further sharp fall in the export prices in recent weeks in soy meal have made the imports from India lucrative.

The meal prices are unlikely to post sharp gains to keep the exports window open at least for the period when India's soybean crushing is at a higher pace for first 4 - 5 months (Oct-Feb) of the new marketing season.

Higher domestic soybean production in 2016/17 will eventually increase the soybean crushing which will further increase the availability in soy meal this season.

We expect India's soy meal exports to recover slightly in the new season with higher 2016/17 soybean production leading to higher crushing eventually increasing the meal supplies.

India's 2016/17 soy meal exports are expected to witness 3 year high and expected to jump 2 million tonnes from 2,61,051 exported last year, stated industry officials.

The exporters have contracted to ship around 500,000 tonnes soy meal for December-March delivery.

However, currently the domestic soy meal demand is sluggish due to weak demand from poultry owing to fall in poultry demand after demonetization.

***India's soy meal and its other value added products (HS Code 2304) during February 2017 is 2,07,977 tons compared to 29,951 tons in February 2016 showing an increase of 594.40% over the same period of last year.***

***On a financial year basis, the export during April'2016 to February'2017 is 8,09,271 tons as compared to 3,60,652 tons in the same period of previous year showing an increase of 124.39%.***

***During current Oil year, (October – September), total exports during October 2016 to February 2017 is 7,33,539 tons as against 1,59,124 tons last year, showing an increase by 360.98%, showing an increase by 306.86%, as reported by SOPA.***

***France (81688.38 Tonnes), Bangladesh (53900 Tonnes), Japan (32905 Tonnes), Vietnam (22436.575 Tonnes) and Oman (4070.515 Tonnes) remained the top buyers of the soy meal of Indian origin during the month of February 2017.***

Recovery in exports is primarily due to drastic fall in the Indian soy meal prices making it price competitive to South America.

*Indian meal prices need to be highly competitive against the South American and China's meal prices to regain the lost markets it lost in previous seasons.*

*Preference of the soy meal of Indian origin mainly by the South-East countries due to logistic and freight advantage and demand for non-GMO meal has lost the ground owing to much higher soy meal price of Indian origin compared to the South American meal. Iran, Japan, Europe, Thailand, Vietnam, Indonesia and South Korea were the major destinations for Indian soy meal exports, whose demand shifted to South America.*

India's Y-o-Y soy meal prices, Indore, are currently lower. Soy meal Indore was quoted lower between Rs 23,000 – 23,500/MT during the week compared to Rs 32,500 – 33,200/MT during the corresponding period last year.

*The soy meal prices are likely to feature range-bound movement with firm-bias on likely fresh buying by the poultry and feed manufacturing industry. However, higher domestic and international soybean production will limit the gains market, in near-term.*

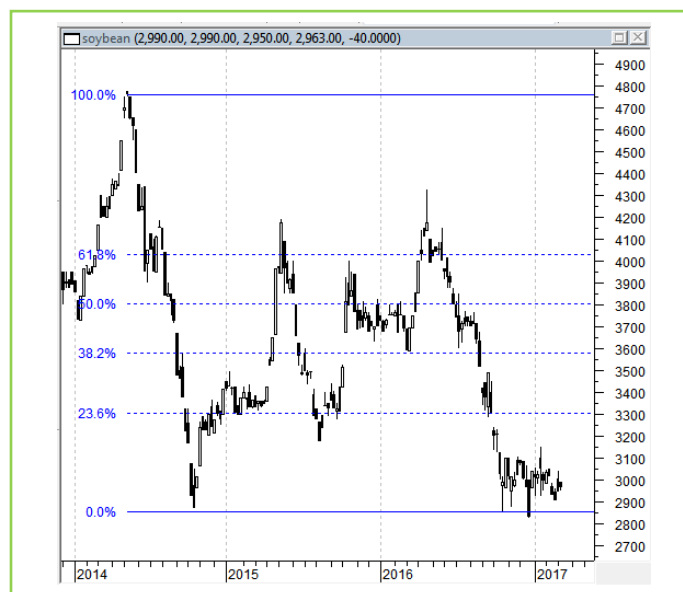


## Technical Analysis:

### NCDEX Soybean Futures



### Soybean Spot, Indore



\*Note: Daily Chart

### Support & Resistance NCDEX Soybean – Mar. contract

S1	S2	PCP	R1	R2
2750	2700	2869	3040	3150

- Soybean fell on selling pressure in the market.
- Prices closed below 18-day EMA.
- RSI and stochastic are falling in the neutral zone.
- MACD is easing in the negative territory.
- The prices are expected to feature losses in the coming week too.
- Trade Recommendation (NCDEX Soybean – Mar.) Week: **SELL** Below 2970. Levels: T1 – 2870; T2- 2800, SL - 3030.

## Rapeseed - Mustard Seed

---

The domestic rapeseed-mustard extended losses as expected on strong new crop supplies, during the week in review.

The all India seed supplies have substantially increased to 4.40 – 5.5 lakh bags per day compared to around 1.85 – 3.85 bags a day previous week. The supplies were 1.0 – 3.5 lakh bags a day during the corresponding period last year.

The seed harvesting is in full swing with the maturity of crop in the key producing states of Rajasthan, UP and Madhya Pradesh. As expected the supplies are to consistently increasing and they will further increase in the coming days and it is expected to reach its peak in first half of April.

The yield of the seed is projected to be higher, at around 1000kg/ha, on the favourable weather

The new crop seed is quoted around Rs 3,815 – 3,940 a quintal compared to Rs 4,050 - 4,195 a quintal during the corresponding period last year at the benchmark, Jaipur.

At NCDEX futures, the April contract has improved and the seed is trading around 3844/Qtl compared to 3900/Qtl previous week.

India's edible oil imports are consistently falling m-o-m on improved domestic oilseeds crushing.

India's January edible oil imports fell 19.7 percent y-o-y to 10.08 lakh tons from 12.55 lakh tons in January 2016. Palm oil imports fell 11.5 percent y-o-y to 6.08 lakh tons y-o-y from 6.88 lakh tons in January 2016. CPO Imports fell 23 percent y-o-y to 4.08 lakh tons from 5.30 lakh tons in January 2016. RBD palmolein imports rose 30.7 percent y-o-y to 1.97 lakh tons from 1.50 lakh tons in January 2016.

Soy oil imports fell 62 percent y-o-y to 1.67 lakh tons from 4.41 lakh tons in January 2016. Sunflower oil imports rose 27.1 percent y-o-y to 2.15 lakh tons from 1.18 lakh ton in January 2016. Rapeseed (Canola) oil imports rose 134 percent y-o-y to 0.18 lakh tons from 0.07 lakh tons in January 2016, reported by Solvent Extractors Association (SEA).

India's January edible oil stocks at ports and pipelines fell 6.6% m-o-m to 17.30 lakh tons from 18.45 lakh tons in December 2016. Stocks of edible oil at ports fell to 642,000 tons (CPO 220,000 tons, RBD Palmolein 150,000 tons, Degummed Soybean Oil 180,000 tons, Crude Sunflower Oil 85,000 tons and 7,000 tons of Rapeseed (Canola) Oil) and about 1,088,000 tons in pipelines (stocks in pipelines were at 1,150,000 tons in December 2016).

India is presently holding 32 days of edible oil requirement on 1st February, 2017 at 17.80 lakh tons compared to 34 days of requirements last month. India's monthly edible oil requirement is 16.5 lakh tons.

Malaysia's February palm oil end stocks fell 5.32 percent to 14.59 lakh tons compared to 15.41 lakh tons in January. Production dropped 1.43 percent in February to 12.59 lakh tons compared to 12.79 lakh tons in January. Exports in January fell 13.97 percent to 11.07 lakh tons compared to January exports at 12.86 lakh

tons. Imports in February fell 43.66 percent to 0.40 lakh tons compared to 0.72 lakh tons in January, reported by Malaysian Palm Oil Board.

Malaysia's March 1-10 palm oil exports fell 25.7 percent to 250,481 tons compared to 337,282 tons in corresponding period last month. Top buyers were China at 50,590 tons (76,500 tons), India at 35,300 tons (15,800 tons), European Union at 25,270 tons (38,500 tons), United States at 21,800 tons (21,130 tons) and Pakistan at 11,500 tons (12,000 tons). Values in brackets are figures of last month, reported cargo surveyor Societe Generale de Surveillance (SGS).

China's imports of edible vegetable oil in February fell 25.5 percent to 4.1 lakh tons compared to 5.5 lakh tons in January. Imports rose 2.5 percent compared to last year which was at 4 lakh tons. Year to date imports of edible vegetable oil rose 2.6 percent to 9.6 lakh tons, figures by China's General Administration of Customs (CNGOIC).

---

### **Previous Updates**

India is expected to produce around 7.0 million tonnes of rapeseed-mustard in 2016/17 with an average yield of about 1000 kg/ha compared to 5.8 million in 2015/16.

Malaysia has increased March crude palm oil export duty to 8 percent from 7.5 percent in February. Tax is calculated at reference price of 3,337.30 ringgit (\$748.95) per ton. Tax is calculated above 2,250 ringgit starting from 4.5 percent to a maximum of 8.5 percent, said Malaysia Palm Oil Board (MPOB).

However, the inventories remained higher than the market/industry expectations.

According to Indonesia Palm Oil Association, Indonesia's 2017 crude palm oil production is estimated to rise 12.7 percent to 35.5 MMT compared to 31.1 MMT in 2016. Heavy rains in 2016 will support palm oil production and growth in plantation in 2013 will bear fruit in 2017.

Malaysia's palm oil production in 2017 is estimated to rise 12 percent to 19.4 MMT from 17.4 MMT in 2016. Exports of palm oil in 2017 from Malaysia will increase 11.2 percent to 17.85 MMT from 16.05 MMT in 2016. CPO prices are expected to remain firm in 2017, according to the board, said the Malaysia Palm Oil Board (MPOB).

Indonesia is expected to produce 32-33 MMT of palm oil in 2017 compared to estimated production of 28.5-30 MMT in 2016, higher by 16 percent y-o-y. Production in 2015 was 33 MMT. Wet condition in 2016 in Indonesia is primary reason for higher production in 2017. Exports are expected to grow to 23-25 MMT in 2017 compared to 23 MMT estimated in 2016. Palm oil prices rose in 2016 due to lower stocks of palm on El Nino, crude oil prices and biodiesel mandates in Indonesia and Malaysia, said Indonesia Palm Oil Association (GAPKI).

India's rapeseed-mustard is driven by Malaysian palm oil, India's edible oil imports and Chinese vegoil demand.

*Outlook: The rapeseed-mustard is expected to feature weak tone on higher domestic seed production on better yield potential and rise in the harvested area this season.*

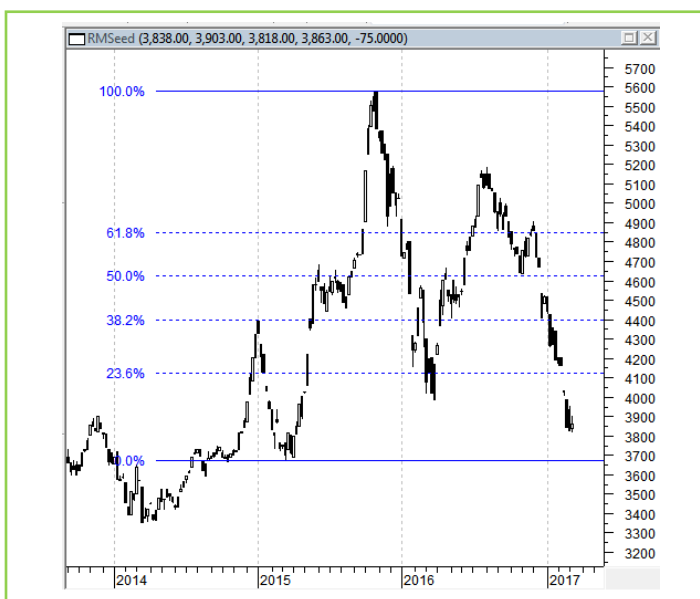
## Technical Analysis:

### NCDEX RM Seed Futures



\*Note: Daily Chart

### RM Seed Spot, Jaipur



### Support & Resistance NCDEX RM Seed – Apr. contract

S1	S2	PCP	R1	R2
3753	3700	3839	3974	4064

- RM seed fell on selling pressure, during the week.
- Prices closed below 18-day EMA.
- RSI and stochastic are easing in the neutral zone.
- MACD is falling in negative territory.
- The prices are expected to feature losses during the week.
- Trade Recommendation (NCDEX Rapeseed-Mustard – Apr.) Week: **SELL** Below 3940. Levels: Target – 3840; T2- 3800, SL – 4000.

## Annexure

**Oilseed Prices at Key Spot Markets:**

Commodity / Centre	Prices (Rs/Qtl)				Change
Soybean	10-Mar-17		3-Mar-17		
	Low	High	Low	High	
Indore –Plant	2925	3000	2950	3025	-25
Indore–Mandi	2800	2900	2750	2925	-25
Nagpur-Plant	2800	2920	2850	2980	-60
Nagpur – Mandi	2500	2710	2500	2750	-40
Latur – Mandi	2475	2780	2657	2868	-88
Kota-Plant	2850	2900	2950	3000	-100
Kota – Mandi	2800	2900	2850	2925	-25
Bundi-Plant	2900	2975	2950	3000	-25
Bundi-Mandi	2850	2900	2800	2900	Unch
Baran-Plant	2850	2900	2900	2950	-50
Baran-Mandi	2700	2825	2700	2900	-75
Bhawani Mandi Jhalawar–Kota-Plant Delivery	2900	2950	2950	3000	-50
Jhalwar-Mandi	2850	2900	2800	2910	-10
Rapeseed/Mustard					
Jaipur-(Condition)(New Crop)	3860	3865	3950	3955	-90
Alwar-(Condition)(New Crop)	3650	3700	3750	3800	-100
SriGanganagar-(Non-Condition-Unpaid)	3500	3550	3450	3500	50
New Delhi–(Condition)(New Crop)	3600	3675	3750	3800	-125
Kota-Non-(Condition)(New Crop)	3400	3500	3400	3500	Unch
Agra-(Condition)(New Crop)	3950	4025	4000	4075	-50
Neewai(New Crop)	3400	3450	3700	3850	-400
Hapur (UP)(New Crop)	3550	3600	3650	3700	-100
Groundnut Seed					
Rajkot	850	850	840	840	10
Sunflower Seed					
Gulbarga	2815	3015	2815	3035	-20
Latur	NA	NA	NA	NA	-
Sholapur(New Crop)	NA	NA	NA	NA	-
Sesame Seed					
Mumbai (White98/2/1	6950	6950	6950	6950	Unch

Soybean Prices are in INR/Qtl. Mandi prices – Loose, Mustard Seed Prices are in INR/Qtl.C –Condition (42%),

\*Groundnut seed in Rs/20 kg, Sunflower Seed in Rs/Qtl

**Oilseed Arrivals in Key Centers:**

Commodity	Centre	Arrivals in Bags/Qtl		Change
		04th to 10th March 2017	25th Feb to 03th March 2017	
Soybean	Madhya Pradesh	520000	565000	-45000
	Maharashtra	500000	530000	-30000
	Rajasthan	250000	213000	37000
	Bundi (Raj)	950	1150	-200
	Baran (Raj)	12100	12800	-700
	Jhalawar (Raj)	6200	5200	1000
Rapeseed/Mustard	Rajasthan	1550000	825000	725000

## India's Oilseeds Production Seen Record at 33.6 Mn T vs 25.3 Mn in 2nd Adv Est. - GOI

The 2nd Advance Estimates of production of oilseeds for 2016-17 have been released by the Department of Agriculture, Cooperation and Farmers Welfare on 15th February, 2017. The assessment of production of different crops is based on the feedback received from States and validated with information available from other sources.

The estimated production of major Oilseeds during 2016-17 is as under:

Oilseeds – 33.60 million tonnes (record) in 2016/17 vs 25.3 million tonnes in 2015/16

- Soyabean – 14.13 million tonnes vs 8.6 million tonnes in 2015/16
- Groundnut – 8.47 million tonnes vs 6.33 million tonnes in 2015/16
- Castorseed – 1.74 million tonnes vs 1.75 million tonnes in 2015/16

With an increase of 8.35 million tonnes over the previous year, total Oilseeds production in the country is estimated at record level of 33.60 million tonnes. It is higher by 0.85 million tonnes than the previous record production of 32.75 million tonnes achieved during 2013-14.

The production of Oilseeds during 2016-17 is also higher by 4.34 million tonnes than the five year's average Oilseeds production. The current year's production is significantly higher than the production of 25.25 million tonnes during 2015-16.

## MSP for 2016/17 Kharif Oilseeds

The Cabinet Committee on Economic Affairs, chaired by the Prime Minister Shri Narendra Modi, has given its approval for Minimum Support Prices (MSPs) for Kharif Crops of 2016-17 season, the MSPs of all the Kharif oilseeds are raised for this season.

The MSP of Yellow Soybean is increased by 6.7% to Rs. 2775/Qtl (including Rs 100 bonus) for 2016-17 season from Rs.2600/Qtl in 2015-16, Groundnut -in- shell by 4.7% to Rs. 4220/Qtl (including Rs 100 bonus) from Rs 4030/Qtl, Sunflower seed by 3.9% to Rs 3950/Qtl (including Rs 200 bonus) from Rs 3800/Qtl, Nigerseed by 4.8% to 3825/Qtl (including Rs 100 bonus) from Rs 3650/Qtl and Sesamum by 6.4% to Rs 5000/Qtl (including Rs 200 bonus) from Rs 4700/Qtl.

## MSP for 2016/17 Rabi Oilseeds

The Cabinet Committee on Economic Affairs has approved the Minimum Support Prices (MSPs) for Rabi Oilseeds Crops of 2016-17 season are as follows: The MSP of Rapeseed/Mustard is raised (10.4%) by Rs. 350/Qtl to Rs. 3,700/Qtl from Rs. 3,350/Qtl earlier. For Safflower too it is increased (12.1%) by Rs. 400/Qtl to Rs. 3,700/Qtl from Rs. 3,300/Qtl in 2014-15. Further, to incentivize cultivation of oilseeds, the Cabinet has decided to give a bonus of Rs 100/- per quintal each for Rabi oilseeds including Rapeseeds/Mustards and Safflower, over and above the recommendations of the CACP.

### Disclaimer

The information and opinions contained in the document have been compiled from sources believed to be reliable. The company does not warrant its accuracy, completeness and correctness. Use of data and information contained in this report is at your own risk. This document is not, and should not be construed as, an offer to sell or solicitation to buy any commodities. This document may not be reproduced, distributed or published, in whole or in part, by any recipient hereof for any purpose without prior permission from the Company. IASL and its affiliates and/or their officers, directors and employees may have positions in any commodities mentioned in this document (or in any related investment) and may from time to time add to or dispose of any such commodities (or investment). Please see the detailed disclaimer at <http://www.agriwatch.com/Disclaimer.asp>  
© 2017 Indian Agribusiness Systems Pvt Ltd.