

Oilseeds Weekly Research Report

Contents

- ❖ Executive Summary
- ❖ Outlook – Cash Market
- ❖ AW Oilseeds Index
- ❖ International Highlights
- ❖ Planted Area
- ❖ Soybean – Domestic & International
- ❖ Soy meal
- ❖ Technical Analysis - Soybean
- ❖ Rapeseed - Mustard
- ❖ RM Seed Supply, Rajasthan
- ❖ Technical Analysis – RM Seed
- ❖ Annexure – Prices etc.

Executive Summary

Soybean noticed range –bound to firm tone during the week on lower arrivals in the mandis and good buying interest in the cash market. However upside was limited amid weakness in soybean at CBOT during the beginning of the week. Soybean at CBOT witnessed easy tone amid rains in the soybean growing regions of Brazil and Argentina. China's import of U.S. soybean could decline in 2018 on stringent Chinese import rules introduced. The weekly export sales of soybean were lower compared to previous week.

In the domestic market, arrivals are declining in the mandis. Good buying interest added to the positive tone of the market. Recovery in edible oils in the domestic market lend offered some support to the market.

The weekly export sale of soybean at 0.975 MMT as reported by the USDA was lower compared to previous week. Good rainfall is expected in the soybean growing regions of Argentina and Brazil in the coming days. This is likely to support soybean crop development. According to data reviewed by Reuters, half of U.S. soybeans exported to China this year would not meet Chinese rules for routine delivery in 2018.

Soy meal prices noticed range –bound to firm tone following soybean and good demand in the export market. In the current oil year, soy meal exports are higher compared to corresponding period previous year.

Rapeseed prices witnessed easy tone during the week amid lack of demand from the retailers and stockists around current levels. Weakness in soya oil at CBOT and palm oil at BMD added to the weak tone of the market. Rabi mustard seed acreage till date is lower compared to same period previous year.

Prices are driven by overall bearish scenario of edible oils in the global market. Downside will be limited amid lower arrivals in the mandis. is limited amid lower rabi oilseeds sowing progress till date.

Outlook – Cash Market

Outlook - Soybean (Spot, Indore): The soybean noticed firm tone on lower arrivals and good buying interest in the cash market. However upside was limited on weakness in soybean at CBOT during the beginning of the week. Soybean at CBOT witnessed easy tone amid rains in the growing regions of Argentina and Brazil. China's import of U.S. soybean could decline in 2018 amid stringent Chinese import rules introduced. The weekly export sales released by the USDA were below previous week's level. The prices are expected to feature range bound movement with firm bias between the price band of 2900 – 3200 level (Indore, Plant basis).

Outlook – Soy meal (Spot, Indore): Soy meal witnessed positive tone during the week following soybean and good demand in the export market. Soy meal exports in the current oil year are higher compared to previous year's level. Indian soy meal prices have to remain competitive to retain global share in the market. Soy meal, Indore is expected to be in the range of 22,500 – 24,000/MT levels during the week.

Outlook - Rapeseed-Mustard (Spot, Jaipur basis): The rapeseed-mustard noticed weak tone during the week amid lack of demand from the retailers and stockists around current levels. Weakness in soya oil at CBOT and palm oil at BMD added to the weak tone of the market. Rabi sowing of rapeseed is lower by around 8.0% till date compared to same corresponding period previous year. The seed prices are likely to feature range-bound movement with weak bias and witness the levels between 3950 – 4100/Qtl; levels during the week.

International Highlights

- ❖ According to consultancy, AgRural forecast of rains during next two weeks in most soy producing regions of Brazil is likely to support soybean crop. Weather in January will define the crop output and yield. Harvesting will be little later than usual due to delayed planting. Last year Brazil produced 114 MMT of soybean following favourable weather. In the current season, it is expected to produce 109 MMT soybean according to Conab.
- ❖ According to the General Administration of Customs, China imported 458,959 metric tonnes of rapeseed in November 2017, an increase of 50.32 per cent compared to previous month. Imports were 33 per cent higher compared to the same corresponding period previous year. It imported 3,860 metric tonnes of soy meal in November 2017, an increase of 328.89 per cent compared to previous month. Imports were 303 per cent higher compared to the same period previous year.
- ❖ Rains in Argentina's central Pampas grains belt during the weekend will improve soil moisture and allow producers to advance with plantings of soybeans, which had been delayed due to dry weather; according to agricultural analysts. However dry weather expected in the coming days is likely to affect soybean planting.
- ❖ According to data reviewed by Reuters, half of U.S. soybeans exported to China this year would not meet Chinese rules for routine delivery in 2018. Stringent import restrictions for soybean imports from U.S. in China will be effective from 01 January, 2018.
- ❖ Net sales of 974,700 MT of soybean for 2017/2018 were down 44 percent from the previous week and 37 percent from the prior 4-week average. Increases were reported for China (928,700 MT, including 451,500 MT switched from unknown destinations and decreases of 266,500 MT), Japan (97,500 MT, including 45,200 MT switched from unknown destinations and decreases of 1,800 MT), the Netherlands (84,200 MT, including 76,000 MT switched from unknown destinations and decrease of 3,000 MT), Mexico (67,500 MT, including decreases of 200 MT), and Turkey (50,800 MT) during the week December 15 -21, 2017. Reductions were reported for unknown destinations (327,500 MT) and Spain (32,300 MT). For 2018/2019, net sales of 81,300 MT were reported for unknown destinations (72,900 MT), Japan (6,400 MT), and Thailand (2,000 MT). The current week's net sales are lower compared to net sales of 1,742,900 MT during the previous week.

Soybean

Soybean noticed range –bound to firm tone during the week on lower arrivals in the mandis and good buying interest in the cash market. However upside was limited amid weakness in soybean at CBOT during the beginning of the week. Soybean at CBOT witnessed easy tone amid rains in the soybean growing regions of Brazil and Argentina. China's imports of U.S. soybean could decline in 2018 on stringent Chinese import rules introduced. The weekly soybean export sales were below previous week's level.

In the domestic market, arrivals are declining in the mandis. Good buying interest in the cash market added to the positive tone of the market. Recovery in edible oils in the domestic market lend offered some support to the market.

The total weekly soybean arrivals in the cash markets of Madhya Pradesh are reported at 7,30,000 bags compared to 7,60,000 bags reported in the previous week.

SOPA SOYEAN PRODUCTION ESTIMATES KHARIF 2017

Area in Lakh Ha, Yield in Kg. Per Hectare, Production In Lakh MT

S.No.	Division/District	Kharif 2016			Kharif 2017		
		Area	Yield	Production	Area	Yield	Production
1	Madhya Pradesh	54.010	1058	57.168	50.100	905	45.359
2	Maharashtra	35.809	1102	39.456	34.484	925	31.894
3	Rajasthan	9.812	968	9.499	9.245	825	7.629
4	Andhra Pradesh (Telangana)	2.993	815	2.439	1.652	840	1.388
5	Karnataka	3.240	785	2.543	2.710	840	2.276
6	Chattisgarh	1.340	975	2.543	1.320	860	1.135
7	Gujarat	1.379	1005	1.307	1.290	905	1.167
8	Rest Of India	1.131	980	1.386	0.760	800	0.608
	Grand Total	54.010	109.714	1047	101.561	901	91.457

As per Agriwatch estimates, soybean production in the current kharif season is expected to be 98 lakh metric tonnes compared to 115 lakh metric tonnes in the previous season. Lower soybean production will lend some support to the market. However comfortable carry-in stocks and record soybean crop in U.S. Midwest will continue to be the limiting factor.

The total sown area under rabi oilseeds, as on 29th December 2017, is lower compared to the previous year's level which is down by 6.65% at 74.27 lakh hectares compared to 79.56 lakh hectares during the corresponding period last year.

The major buyers in Madhya Pradesh are as follows: Amrit Mandsaur, Ambika Kalapipal, Agrawal Neemuch, Adani Shujalpur, Agro Sol. Datia, Avi Agro, Bansal, Bajrang, Betul Oil, Dhanuka, DivyaJyoti, G. Ambuja, Itarsi, Indian Soya (3-2-10 specification), Khandwa, Khyati, Kriti, K.P. Newari, Mahakali, M.S. Neemuch, Prakash, Oyster Exim, Prestige, Ruchi, Rama, RH Solvex, SSA Mandideep, Shanti Overseas, Sawariya, Itarsi, Sitashri, Vippy for Dewas and Mandsaur delivery during the week.

Previous Update

We expect India's soy meal exports to pick up in coming months. Seasonally India's soy meal exports are at high volume, during October thru February due to higher pace in crushing the bean.

Huge South American soy supplies continue to influence the market as the Indian soy meal price has been out-priced in the international market in recent weeks.

Lower soybean supplies this season, mean decline in crushing and eventually, availability of less soy meal, eventually leading to lower exports.

India's domestic soy meal consumption is around 5 million tonnes and the production is expected to be 7-7.5 million tonnes, the surplus 2.5 million needs to be exported for the good crush market during the season.

The soybean supplies were lower in the key markets of Madhya Pradesh, Maharashtra and Rajasthan during the week.

The domestic soybean prices are likely to witness range –bound to firm tone amid good buying interest in the cash market and recovery in edible oils in the domestic market.

International:

The international benchmark, CBOT soybean closed slightly higher amid short –covering ahead of the year -end holidays.

At CBOT, the soybean, in the most active March contract, ended higher at US \$ 9.62/bushel compared to US \$ 9.60/bushel last week.

Net sales of 974,700 MT for 2017/2018 were down 44 percent from the previous week and 37 percent from the prior 4-week average. Increases were reported for China (928,700 MT, including 451,500 MT switched from unknown destinations and decreases of 266,500 MT), Japan (97,500 MT, including 45,200 MT switched from unknown destinations and decreases of 1,800 MT), the Netherlands (84,200 MT, including 76,000 MT switched from unknown destinations and decrease of 3,000 MT), Mexico (67,500 MT, including decreases of 200 MT), and Turkey (50,800 MT) during the week December 15 -21, 2017. Reductions were reported for unknown destinations (327,500 MT) and Spain (32,300 MT). For 2018/2019, net sales of 81,300 MT were reported for unknown destinations (72,900 MT), Japan (6,400 MT), and Thailand (2,000 MT). The current week's net sales are lower compared to net sales of 1,742,900 MT during the previous week.

Previous updates

In the USDA quarterly stock report, it has been reported that the US soybeans stored in all positions on September 1, 2017 totaled 301 million bushels, up 53 percent from September 1, 2016.

On-farm stocks totaled 88 million bushels, up 110 percent from a year ago. Off-farm stocks, at 213 million bushels, are up 37 percent from a year ago.

Indicated disappearance for the March - May 2017 quarter totaled 775 million bushels, up 18 percent from the same corresponding period a year earlier.

Informa increased soybean acreage to a record 91.387 million acres in 2018 compared to previous month's estimates of 89.627 million acres. Soybean yield has been estimated at 49.7 bushels per acre compared to USDA's figure of 49.5 bushels per acre. Soybean production has been estimated at 4.450 billion bushels.

According to National Oilseed Processors Association (NOPA), U.S. November soybean crush rose 1.7 percent to 163.546 million bushels from 160.752 million bushels in November 2016. Crush of soybean in October 2017 was 164.242 million bushels. Soy oil stocks in U.S. at the end of November increased to 1.326 billion lbs compared to 1.224 billion lbs in end October 2017. Soy meal exports during the month increased to 896,145 metric tonnes, up from 643,199 metric tonnes in October and 804,322 tons during the same period previous year.

According to consultancy Safras & Mercado, Brazilian soybean output is expected at 114.57 MMT in 2017 -18 compared to 114.7 MMT estimated in the month of October. Safras has forecast a 5 percent rise in Brazil's soybean planted area at 35.49 million hectares (87.7 million acres) this season.

According to USDA, China will reduce the amount of foreign material allowed in shipments of U.S. soybeans as on January 01, 2018. Shipments of U.S. soybeans arriving at Chinese ports and containing 1 per cent of foreign

material will be expedited. Shipments with more than 1 per cent foreign material would be held back for testing. According to traders, this will make difficult for U.S. shipments to compete with South American exports.

According to Abiove, Brazil's soybean production has been kept unchanged at 109.5 MMT in 2018 compared to December 12 estimates. Soybean exports have been kept unchanged at 65 MMT.

According to consultancy AgRural, Brazilian farmers are expected to produce 12.9 MMT of soybeans in the 2017-18 season. The forecast is higher compared to 110.2 MMT estimates in November. Production estimates have increased as soybean acreage has been increased by 108,000 hectares to 34.8 million hectares.

According to a report released by the agriculture ministry, China's soybean imports are expected to increase by 2.7 per cent to 95.97 MMT in 2017 -18 compared to previous year. Soybean output is expected to increase by 15.1 per cent to 14.89 MMT during the period. Consumption is expected to increase by 2.3 per cent to 111 MMT in 2017 -18 compared to previous year.

According to IMEA (Mato Grosso Institute of Agricultural Economics), Brazilian farmers have sold 38.6 per cent of the 2017/18 soybean crop as on 11 December, 2017 in Mato Grosso. This is 5.84 per cent higher from the start index of November. Mato Grosso is expected to produce 30.60 MMT of soybean in 2017/18.

According to Conab, Brazilian soybean output is expected at 109.2 MMT in 2017 -18 season compared to 114.1 MMT during the previous season.

The U.S. Department of Agriculture's monthly supply and demand report for the month of December forecasts U.S. soybean stocks at 445 million bushels, up 20 million bushels from last month due to lower exports. Total U.S. oilseed production for 2017/18 is projected at 132.2 MMT, up 0.1 MMT from previous month amid higher cottonseed production. Global oilseed production is forecast at 579.5 MMT, up 0.7 MMT mostly reflecting higher rapeseed, peanut, and palm kernel production. Global soybean ending stocks for 2017/18 are forecast at 98.32 MMT up from previous month's forecast of 97.90 MMT, mostly reflecting increases for United States and European Union.

According to China's General Administration of Customs (CNGOIC), China's imports of edible vegetable oil in November rose 14.9 percent to 5.4 lakh tons compared to 4.7 lakh tons in October. Imports rose 5.9 percent compared to corresponding period last year which was reported at 5.1 lakh tons. Year to date imports of edible vegetable oil rose 8.5 percent to 51.7 lakh tons.

Argentina will put an 8 percent tax on biodiesel exports starting next year according to government sources. According to the U.S. International Trade Commission (ITC), biodiesel imports from Argentina and Indonesia harm U.S. producers as imports coming to the country are below the cost of production. It announced that anti-dumping and anti-subsidy duties would remain for at least five years.

According to a latest long –term crop forecast report released by the USDA, soybean acreage in 2018 is forecast at a record 91.0 million acres compared to 90.2 million acres in 2017. It will be another year of bumper soybean supply, assuming weather remains favourable in the growing regions.

According to data released by the trade ministry, Brazil exported 2.14 MMT soybean in November 2017 compared to 2.49 MMT in October and 0.32 MMT during the same period previous year. Soy meal exports stood

at 1.07 MMT in November compared to 1.28 MMT in October and 0.87 MMT during the same corresponding period previous year.

According to the latest monthly estimates from Strategie Grains, soybean production estimates have been increased to 2.7 MMT in 2017/18 from 2.6 MMT in previous season.

According to the General Administration of Customs, China imported 8.68 MMT of soybeans in November 2017, an increase of 48 per cent compared to previous month. Imports were 11 per cent higher compared to the same corresponding period previous year. Imports were higher in November as a backlog of shipments from United States arrived at the ports.

According to Argentine Ministry of Agriculture, soybean acreage in 2017/18 is likely to decline to 16.8 million hectares in 2017/18 compared to 18 million hectares previous season.

According to official sources, Argentina is likely to start cutting its 30 per cent export tax on soybean exports from next year onwards. This should help in augmenting soybean planting area. Argentina is the world's third largest exporter of soybeans and started planting its 2017/18 crop this month, with harvesting expected between March and June. According to Rosario exchange, soybean planting area in 2017/18 will be 18.1 million hectares compared to 20.1 million hectares in 2015/16. If export tax is eliminated, area will increase from 2018/19 season.

The IGC has kept the global soybean output in 2017/18 unchanged from its previous estimates. Global soybean production in 2017/18 was put at 348 million metric tonnes which is unchanged from previous projection and up from previous forecast of 347 million but still below the 2016/17 record crop of 351 million metric tonnes. Soybean consumption is likely to increase to 353 million metric tonnes up from previous forecast of 351 million metric and higher compared to 338 million metric tonnes in 2016/17.

According to the Buenos Aires Grains Exchange, Argentine 2017/18 soybean crop is expected at 54 million tonnes compared to 57.5 million tonnes in 2016 -17 as farmers have shifted to wheat and corn. Soy planting area in the 2017/18 season is seen at 18.1 million hectares, down from 19.2 million in 2016/17.

The international soybean prices are expected to witness range –bound to weak tone amid expectation of rains in the soybean growing regions of Brazil and Argentina and stringent Chinese import rules introduced for U.S. soybean.

Soy meal

The domestic meal prices continued mostly positive tone during the week amid good demand in the cash market and spillover support from soy meal at CBOT. Soy meal at CBOT closed slightly amid short –covering ahead of year –end holidays.

Soy meal for delivery in the next 10 days at Latur was quoted at 24800+GST by Octagon. This is with 46% protein content. However, it was quoted at 25300+GST for 47% protein content and 25800+GST for 48% protein content.

Through export promotion scheme (MEIS) govt. would provide additional 2% incentive over and above existing incentives ranges from 2 to 5% for various export products including soya meal. This will make Indian oil meal more competitive in the world market and may result in to larger export of oil meals during current year.

Exports of oil meals in the current oil year are higher compared to previous year. Prices have to remain competitive to retain the global market share. Lower soybean production this season will translate into lower meal production in 2017 -18 oil year.

Further, competitive price offer by South America for soy meal has reduced demand for Indian soy meal in the global market.

On a financial year basis, India's export of oil meals during April 2017 to November 2017 stands at 1,813,037 metric tonnes as compared to 868,358 metric tonnes in the same corresponding period of previous year showing an increase of 109% according to data released by the Solvent Extractor's Association of India.

In the month of November 2017, export of oil meals increased by 93% to 328,091 metric tonnes compared to the same corresponding period previous year. Soy meal exports during the period April 2017 to November 2017 was reported at 768,981 metric tonnes compared to 204,860 metric tonnes during the same corresponding period previous year.

Currently, the domestic meal prices are higher compared to the corresponding period last year.

Soy meal increased in international market, during the week.

CBOT soy meal March contract settled at US \$ 316.80 per short ton compared to US \$ 316.70 per short ton last week.

Net sales of 288,300 MT for 2017/2018 were up 57 percent from the previous week and 17 percent from the prior 4-week average. Increases were reported for Mexico (40,200 MT), Italy (40,000 MT), Morocco (37,000 MT, including 5,000 MT switched from unknown destinations), Guatemala (31,800 MT, including decreases of 100 MT), Jordan (20,000 MT), Honduras (19,400 MT), and El Salvador (18,000 MT, including 2,500 MT switched from Honduras, 4,000 MT switched from Nicaragua, and 400 MT switched Costa Rica) during the week December 15 -21, 2017. Reductions were reported for Nicaragua (4,000 MT) and Colombia (800 MT). For 2018/2019, net sales of 17,600 MT were reported for Guatemala (7,700 MT), Honduras (6,600 MT), and El

Salvador (3,300 MT). The current week's net sales for 2017/18 are higher compared to net sales of 184,100 MT during the previous week.

The domestic soy meal prices at Indore, were quoted at Rs 23,200 – 23,500/MT compared to Rs. 23,000/MT - 23,300/MT in previous week. At Latur and Nanded, Maharashtra, soy meal noticed steady to firm tone and were quoted at Rs 24,600/MT and 24,500/MT respectively compared to Rs 23,500/MT in Indore and Rs 24,300/MT in Kota.

Previous Updates

India has registered gains in the soy meal exports in the current season. Recovery in INR against dollar will eventually make India's soy meal export prices unattractive and help South American soy meal to gain market share.

India is expected to produce 7-7.5 million metric tonnes of soy meal this season. Out of which 5 million metric tonnes will be consumed domestically but another 2 -2.5 million metric tonnes must be shipped overseas, failing which, the disparity on crushing soybean will increase.

We expect India's soy meal exports to decline slightly in the new season with lower 2017/18 soybean production leading to lower crushing eventually decreasing the meal supplies.

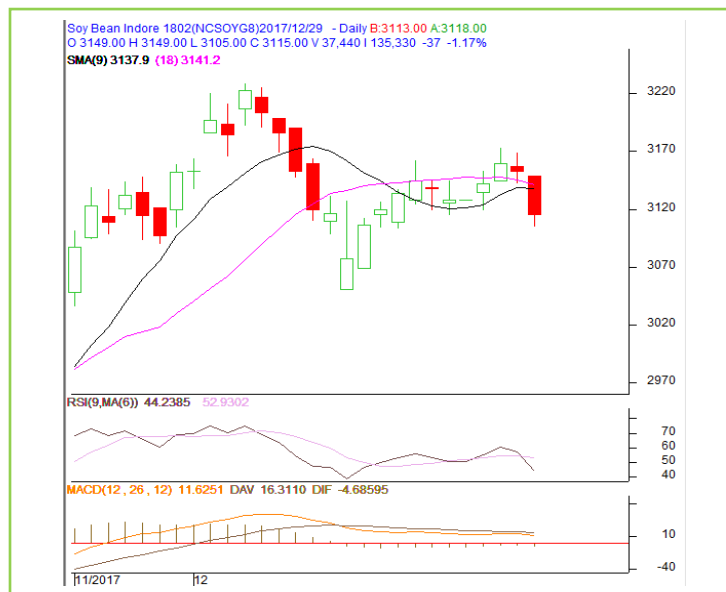
Indian meal prices need to be highly competitive against the South American and China's meal prices to regain the markets it lost in previous seasons.

India's Y-o-Y soy meal prices, Indore, are currently slightly higher. Soy meal Indore was quoted lower between Rs 23,200 – 23,500/MT during the week compared to Rs 22,425 – 23,400/MT during the corresponding period last year.

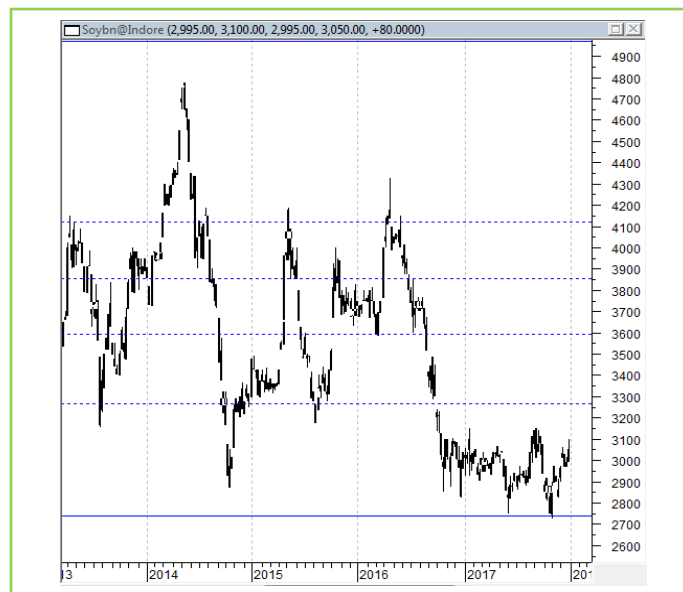
The soy meal prices are likely to feature range-bound movement with firm bias on good demand in the cash market.

Technical Analysis:

NCDEX Soybean Futures



Soybean Spot, Indore



*Note: Daily Chart

Support & Resistance NCDEX Soybean – Feb. contract

S1	S2	PCP	R1	R2
3000	2950	3115	3250	3300

- Soybean noticed downward movement, during the week.
- Prices closed below 18-day EMA.
- RSI and stochastic are declining in the neutral zone.
- MACD is declining in the positive territory.
- The prices are expected to feature loss in the coming week.
- Trade Recommendation (NCDEX Soybean – Feb.): **SELL** Below 3175. Levels: T1 – 3075; T2- 3025, SL -3235.

Rapeseed - Mustard Seed

The domestic rapeseed-mustard witnessed easy tone during the week amid lack of demand from the retailers and the stockists around current levels. Weakness in soya oil at CBOT and palm oil at BMD added to the weak tone of the market.

According to industry sources, India's rapeseed and mustard output in 2017/18 is likely to decline by 10 per cent compared to previous season. According to Government of India figures, rapeseed and mustard seed has been sown in 62.80 lakh hectares as on 22 December 2017 compared to 68.22 lakh hectares during the same corresponding period previous year.

Farmers have reduced the area in Rajasthan amid higher temperatures and lack of moisture at the time of sowing. According to Solvent Extractor's Association of India, India produced a record 6.73 MMT rapeseed in the 2016/17 marketing year.

The Cabinet Committee on Economic Affairs has approved the Minimum Support Prices (MSPs) for Rabi Oilseeds Crops of 2017-18 season are as follows: The MSP of Rapeseed/Mustard is raised (8.1%) by Rs. 300/Qtl to Rs. 4,000/Qtl from Rs. 3,700/Qtl earlier.

The all India seed supplies were reported between 1.20 – 1.55 lakh bags in a day compared to around 1.20 – 1.65 bags a day, previous week. The supplies were 0.40 lakh bags a day during the corresponding period last year.

The seed prices are still lower at spot market and are quoted at around Rs 4,070 – 4,125 a quintal compared to Rs 4,400 – 4,520 a quintal during the corresponding period last year at the benchmark, Jaipur.

At NCDEX futures, the seed prices at March contract ended lower at 4113/Qtl compared to 4174/Qtl previous week.

The area coverage under rapeseed, as on 29 December, is reported down 7.77% at 63.58 lakh hectares compared to 68.94 lakh hectares at the same period last year.

Crop	As on 29 Dec. 2017	As on 29 Dec. 2016	% Chg.
Rapeseed/Mustard	63.58	68.94	-7.77
Groundnut	4.33	4.04	7.18
Safflower	0.72	0.97	-25.77
Sunflower	1.39	1.31	6.11
Sesamum	0.32	0.39	-17.95
Linseed	3.63	3.44	5.52
Total Oilseeds	74.27	79.56	-6.65

Source: Government of India

The total sown area under *rabi* oilseeds, as on 29 December, is lower compared to the previous year's level which is down by 6.65% at 74.27 lakh hectares compared to 79.56 lakh hectares during the corresponding period last year.

India's total area under rapeseed in 2017 was 70.56 lakh hectares which was higher by 9.3% from 2016.

According to United States Department of Agriculture (USDA) in its December review, India's 2017/18 imports of palm oil is hiked 0.4 MMT to 9.9 MMT from 9.5 MMT in its earlier review. Consumption of palm oil in India in 2017/18 is increased to 10.1 MMT from 9.8 MMT in its earlier review. End stocks of palm oil in India in 2017/18 is increased 0.1 MMT to 0.449 MMT from 0.349 MMT.

The rapeseed-mustard prices are driven by India's edible oil imports, Chinese veg. oil demand and Malaysian palm oil. India's edible oil imports increased in November.

Previous Updates

Agriwatch had projected India's 2016/17 rapeseed production at 7.0 million tonnes with an average yield of about 1000 kg/ha compared to 5.8 million tonnes in 2015/16 while Solvent Extractors of India had estimated India's seed production at 7.2 million tonnes.

According to Solvent Extractors Association (SEA), India's November edible oil imports rose 5.97 percent y-o-y to 12.25 lakh tons from 11.56 lakh tons in November 2016. Palm oil imports in November fell 10.5 percent y-o-y to 7.17 lakh tons from 8.01 lakh tons in November 2016. CPO Imports rose marginally y-o-y to 5.60 lakh tons from 5.57 lakh tons in November 2016. RBD palmolein imports fell 39 percent y-o-y to 1.47 lakh tons from 2.41 lakh tons in November 2016. Soy oil imports rose 67 percent y-o-y to 2.74 lakh tons from 1.64 lakh tons in November 2016. Sunflower oil imports rose 32.99 percent y-o-y to 1.94 lakh tons from 1.58 lakh tons in November 2016. Rapeseed (canola) oil imports in November rose 28.1 percent to 0.41 lakh tons compared 0.32 lakh tons in November 2016.

According to Solvent Extractors Association (SEA), India's November edible oil stocks at ports and pipelines fell 3.28 percent m-o-m to 22.67 lakh tons from 23.44 lakh tons in October 2017. Stocks of edible oil at ports fell to 847,000 tons (CPO 345,000 tons, RBD Palmolein 115,000 tons, Degummed Soybean Oil 200,000 tons, Crude Sunflower Oil 180,000 tons and 7,000 tons of Rapeseed (Canola) Oil) and about 1,420,000 tons in pipelines.

India is presently holding 38 days of edible oil requirement on 1st December, 2017 at 22.67 lakh tons compared to 39 days of requirements last month at 23.44 lakh tons. India's monthly edible oil requirement is 18.0 lakh tons.

According to United States Department of Agriculture (USDA) in its December review, India's 2017/18 imports of sunflower oil is hiked 0.15 MMT to 1.85 MMT from 1.7 MMT in its earlier review. Consumption of sunflower oil in India in 2017/18 is increased to 2.1 MMT from 1.9 MMT in its earlier review.

Rapeseed oil production forecasts for 2017/18 declined 240,000 tonnes to 28.45m tonnes in December 2017, from 28.69m tonnes in November the same year according to USDA. Consumption forecasts fell 130,000 tonnes to 29.22m tonnes in December 2017, compared to 29.35m tonnes in November.

According to cargo surveyor Intertek Testing Services (ITS), Malaysia's December 1-25 palm oil exports rose 1.0 percent to 1,090,622 tons compared to 1,079,427 tons in corresponding period last month. Top buyers are European Union at 302,297 tons (203,096 tons), China at 162,100 (221,696 tons) and India & subcontinent at 135,130 tons (159,510 tons). Values in brackets are figures of corresponding period last month.

According to cargo surveyor Societe Generale de Surveillance (SGS), Malaysia's December 1-25 palm oil exports rose 1.3 percent to 1,108,189 tons compared to 1,094,318 tons in corresponding period last month. Top buyers are European Union at 284,807 tons (215,814 tons), China at 154,428 tons (182,376 tons), United States at 88,705 tons (52,250 tons), India at 87,260 tons (112,960 tons) and Pakistan at 42,000 tons (51,450 tons). Values in brackets are figures of corresponding period last month.

According to Malaysia Palm Oil Board (MPOB), Malaysia's November palm oil stocks rose 16.02 percent to 25.57 lakh tons compared to 22.03 lakh tons in October. Production of palm oil in November fell 3.29 percent to 19.43 lakh tons compared to 20.08 lakh tons in October. Exports of palm oil in November fell 11.94 percent to 13.54 lakh tons compared to 15.38 lakh tons in October. Imports of palm oil in November rose 124 percent to 0.30 lakh tons compared to 0.13 lakh tons in October. Rise in palm oil end stocks in October was above trade estimates.

According to Malaysian Government circular, Malaysia decreased January crude palm oil export duty to 5.5 percent from 6 percent in December. Tax is calculated at reference price of 2,625.31 ringgit per ton. Tax is calculated above 2,250 ringgit starting from 4.5 percent to a maximum of 8.5 percent.

According to Malaysian government, Malaysia's palm oil production is expected to rise 2.5 percent in 2018 to 20.5 MMT after rise of 15.5 percent rise in production in 2017 at 20 MMT. Malaysia palm oil output was 17.3 MMT in 2016. Average prices of palm oil in 2018 are estimated at 2,750 ringgits per ton due to higher demand by China, EU and India. Average prices of palm oil in 2017 are estimated at 2,700 ringgits (USD 638) per ton.

According to Indonesia Palm Oil Association, Indonesia's 2017 crude palm oil production is estimated to rise 12.7 percent to 35.5 MMT compared to 31.1 MMT in 2016. Heavy rains in 2016 will support palm oil production and growth in plantation in 2013 will bear fruit in 2017.

According to Indonesia Palm Oil Association (GAPKI), Indonesia's October palm oil (excluding biodiesel and oleochemicals) exports fell 5.6 percent to 2.6 MMT from 2.79 MMT in September and 2.41 MMT in October 2016.

End stocks of palm oil in Indonesia in October rose 16 percent to 3.38 MMT from 2.92 MMT in September 2017. Production of palm oil in Indonesia in October rose 3 percent to 4.16 MMT from 4.03 MMT in September 2017.

According to Indonesia trade ministry, Indonesia keeps January crude palm oil export duty to zero, unchanged from last month. This is the ninth consecutive month of zero tax. Reference prices of export tax are set at USD 750 per ton.

Indonesia is expected to produce 32-33 MMT of palm oil in 2017 compared to estimated production of 28.5-30 MMT in 2016, higher by 16 percent y-o-y. Production in 2015 was 33 MMT. Wet condition in 2016 in Indonesia is primary reason for higher production in 2017. Exports are expected to grow to 23-25 MMT in 2017 compared to 23 MMT estimated in 2016. Palm oil prices rose in 2016 due to lower stocks of palm on El Nino, crude oil prices and biodiesel mandates in Indonesia and Malaysia, said Indonesia Palm Oil Association (GAPKI).

According to the latest monthly estimates from Strategie Grains, rapeseed production estimates have been increased to 22.60 MMT in European Union for 2017/18 compared to previous estimates of 21.86 MMT and 20.34 MMT in 2016/17.

According to China's General Administration of Customs (CNGOIC), China's imports of edible vegetable oil in November rose 14.9 percent to 5.4 lakh tons compared to 4.7 lakh tons in October. Imports rose 5.9 percent compared to corresponding period last year which was reported at 5.1 lakh tons. Year to date imports of edible vegetable oil rose 8.5 percent to 51.7 lakh tons.

According to China's General Administration of Customs (CNGOIC), China's November palm oil imports rose 22.57 percent to 5.47 lakh tons compared to November 2016. Year to date imports of palm oil rose 18.77 percent to 45.12 lakh tons compared to corresponding period last year. Imports from Indonesia in November rose 42.47 percent to 3.75 lakh tons compared to November 2016. Year to date imports of palm oil from Indonesia rose 31.37 percent to 28.51 lakh tons compared to corresponding period last year. Imports from Malaysia in November fell 49.59 percent to 6.13 lakh tons compared to November 2016. Year to date imports rose 2.23 percent from Malaysia to 16.60 lakh tons compared to corresponding period last year.

Outlook: The rapeseed-mustard is likely to notice range –bound to weak tone on lower demand from the stockists and the retailers around current levels and weakness in palm oil at BMD.

Technical Analysis:

NCDEX RM Seed Futures



*Note: Daily Chart

RM Seed Spot, Jaipur



Support & Resistance NCDEX RM Seed – Apr. contract

S1	S2	PCP	R1	R2
4000	3800	4113	4250	4300

- Downward movement witnessed in RM seed.
- Prices closed below 18-day EMA.
- RSI is increasing and stochastic is declining in the neutral zone.
- MACD is declining in the positive territory.
- The prices are expected to feature range-bound movement with weak bias, during the week.
- Trade Recommendation (NCDEX Rapeseed-Mustard – Apr) Week: **SELL** Below 4175. Levels: Target – 4075; T2- 4025, SL –4235.

Annexure

Oilseed Prices at Key Spot Markets:

Commodity / Centre	Prices (Rs/Qtl)				Change
Soybean	29-Dec-17		22-Dec-17		
	Low	High	Low	High	
Indore –Plant	3000	3100	2925	3080	20
Indore–Mandi	2800	3000	2850	3000	Unch
Nagpur-Plant	3050	3100	3050	3100	Unch
Nagpur – Mandi	2600	2960	2500	2920	40
Latur – Mandi	2830	2995	2650	3025	-30
Kota-Plant	3000	3150	3050	3150	Unch
Kota – Mandi	2950	3075	2950	3050	25
Bundi-Plant	3050	3100	3100	3150	-50
Bundi-Mandi	2950	3050	3000	3050	Unch
Baran-Plant	3000	3200	2900	3150	50
Baran-Mandi	2900	2950	2850	2950	Unch
Bhawani Mandi Jhalawar–Kota-Plant Delivery	2950	3100	3025	3150	-50
Jhalwar-Mandi	2900	2950	2900	2980	-30
Rapeseed/Mustard					
Jaipur-(Condition)(New Crop)	4070	4075	4105	4110	-35
Alwar-(Condition)(New Crop)	3850	3900	3850	3900	Unch
SriGanganagar-(Non-Condition-Unpaid)	3650	3685	3650	3700	-15
New Delhi–(Condition)(New Crop)	3800	3850	3850	3900	-50
Kota-Non-(Condition)(New Crop)	3450	3550	3550	3650	-100
Agra-(Condition)(New Crop)	4350	4400	4400	4450	-50
Neewai(New Crop)	3950	3980	4000	4050	-70
Hapur (UP)(New Crop)	3750	3800	3825	3850	-50
Groundnut Seed					
Rajkot	810	810	810	810	Unch
Sunflower Seed					
Gulbarga	2175	2850	2225	2950	-100
Latur	NA	NA	NA	NA	-
Sholapur(New Crop)	NA	NA	NA	NA	-

Sesame Seed					
Mumbai (White98/2/1	8300	8300	8300	8300	Unch

Soybean Prices are in INR/Qtl. Mandi prices – Loose, Mustard Seed Prices are in INR/Qtl.C –Condition (42%),
 *Groundnut seed in Rs/20 kg, Sunflower Seed in Rs/Qtl

Oilseed Arrivals in Key Centers:

Commodity	Centre	Arrivals in Bags/Qtl		Change
		23rd December to 29th December 2017	16th December to 22nd December 2017	
Soybean	Madhya Pradesh	730000	760000	-30000
	Maharashtra	695000	750000	-55000
	Rajasthan	188000	225000	-37000
	Bundi (Raj)	1200	1450	-250
	Baran (Raj)	12500	19000	-6500
	Jhalawar (Raj)	7300	12500	-5200
Rapeseed/Mustard	Rajasthan	310000	400000	-90000

India's Kharif Oilseeds Production Seen at 20.68 Mn T vs 22.40 Mn in 1st Adv Est. - GOI

The 1st Advance Estimates of production of major crops for 2017-18 have been released on 22 September, 2017 by the Department of Agriculture, Cooperation and Farmers Welfare. The assessment of production of different crops is based on the feedback received from States and validated with information available from other sources. As a result of floods and erratic rainfall during monsoon 2017, the country has witnessed lower food grain production in the current year compared to previous year.

The estimated production of major Kharif Oilseeds during 2017-18 is as under:

Oilseeds – 20.68 million tonnes

- Soyabean – 12.22 million tonnes
- Groundnut – 6.21 million tonnes
- Castorseed – 1.40 million tonnes

With a decline of 1.72 million tonnes over the previous year, total kharif Oilseeds production in the country is estimated at a level of 20.68 million tonnes. It is lower by 1.93 million tonnes than the all- time record production of 22.61 million tonnes achieved during 2013-14.

The production of Oilseeds during 2017-18 is higher by 0.346 million tonnes than the five year's average Oilseeds production. The current year's production is lower than the kharif production of 22.40 million tonnes during 2016-17.

MSP for 2017/18 Kharif Oilseeds

The Cabinet Committee on Economic Affairs, chaired by the Prime Minister Shri Narendra Modi, has given its approval for Minimum Support Prices (MSPs) for Kharif Crops of 2017-18 season, the MSPs of all the Kharif oilseeds are raised for this season.

The MSP of Yellow Soybean is increased by 9.9% to Rs 3050/Qtl (including Rs 100 bonus) for 2017-18 season from Rs 2,775/Qtl in 2016-17, Groundnut -in- shell by 5.5% to Rs 4,450/Qtl (including Rs 100 bonus) from Rs 4,220/Qtl, Sunflower seed by 3.8% to Rs 4,100/Qtl (including Rs 200 bonus) from Rs 3,950/Qtl, Nigerseed by 5.9% to 4,050/Qtl (including Rs 100 bonus) from Rs 3,825/Qtl and Sesamum by 6.0% to Rs 5,300/Qtl (including Rs 200 bonus) from Rs 5,000/Qtl.

MSP for 2017/18 Rabi Oilseeds

The Cabinet Committee on Economic Affairs has approved the Minimum Support Prices (MSPs) for Rabi Oilseeds Crops of 2017-18 season are as follows: The MSP of Rapeseed/Mustard is raised (8.1%) by Rs. 300/Qtl to Rs. 4,000/Qtl from Rs. 3,700/Qtl earlier. For Safflower too it is increased (10.8%) by Rs. 400/Qtl to Rs. 4,100/Qtl from Rs. 3,700/Qtl in 2016-17.

Sown Area – *Rabi* Oilseeds, India

In the official *Rabi* oilseeds planting report, by the Ministry of Agriculture, the total coverage area under *Rabi* oilseeds is reported at 84.35 lakh hectares, up 6.2% from 79.42 lakh ha in the corresponding period of last year. Of the major oilseeds, rapeseed-mustard sowing is reported up by 9.3% at 70.56 lha compared to 64.53 lha during the corresponding period of last year. Groundnut at 6.16 lha vs 5.96 lha, safflower at 0.95 lha vs 1.17 lha, sunflower at 1.69 lha vs 3.21 lha, sesamum 0.57 vs 0.71 and Linseed at 3.84 lha vs 2.93 lha during the corresponding period last year.

Area in Lakh Hectares			
Crop	2017	2016	% Change
Rapeseed/Mustard	70.56	64.53	9.3
Groundnut	6.16	5.96	3.4
Safflower	0.95	1.17	-18.8
Sunflower	1.69	3.21	-47.4
Sesamum	0.57	0.71	-19.7
Linseed	3.84	2.93	31.1
Others	0.58	0.91	-36.3
Total Oilseeds	84.35	79.42	6.2

Source: MoA, GOI

Disclaimer

The information and opinions contained in the document have been compiled from sources believed to be reliable. The company does not warrant its accuracy, completeness and correctness. Use of data and information contained in this report is at your own risk. This document is not, and should not be construed as, an offer to sell or solicitation to buy any commodities. This document may not be reproduced, distributed or published, in whole or in part, by any recipient hereof for any purpose without prior permission from the Company. IASL and its affiliates and/or their officers, directors and employees may have positions in any commodities mentioned in this document (or in any related investment) and may from time to time add to or dispose of any such commodities (or investment). Please see the detailed disclaimer at <http://www.agriwatch.com/Disclaimer.asp>
 © 2017 Indian Agribusiness Systems Pvt Ltd.