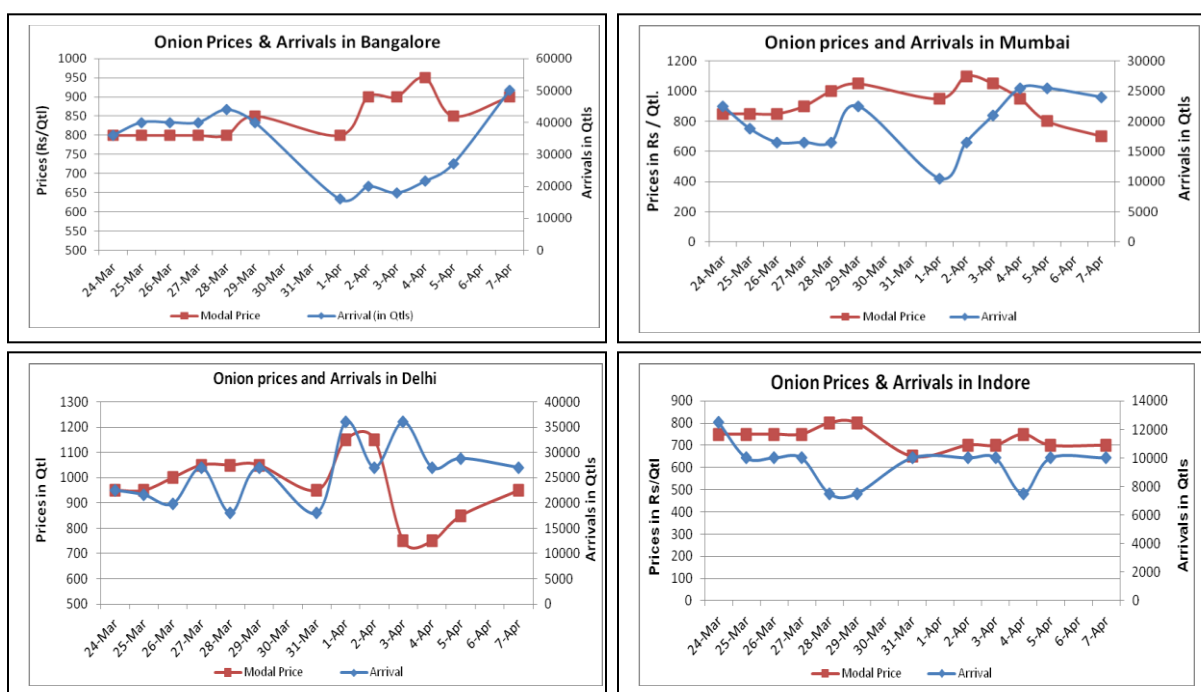


## Onion Fundamentals:

- In Maharashtra, Nashik district crop loss is expected to be approximately 40% compared to previous year because of unseasonal rains and hailstorms.
- In Delhi, onion is arriving in market from Rajasthan, M.P Gujarat and Maharashtra which are contributing approximately 15%, 5%, 10% and 70% respectively.
- In Ahmednagar, onion crop is less affected due to rains and hailstorms as compared to other districts like Dhule and Nashik.
- In Maharashtra, onion storage for this rabi season is expected to be comparatively lower than last year. Exact estimation are expected to be made once harvesting is complete

## Onion wholesale Prices & Arrivals in Producing & Consumption Centers



(Source: AGRIWATCH)

## Onion Prices & Arrivals in Major Mandis as on 7.4.2014

Mandis	Nashik	Lasalgaon	Pimpalgaon	Niphad	Pune	Indore	Delhi	Bangalore
Price (Rs/Qtl)	700-900	800-950	-	500-1120	500-900	500-1000	700-1200	700-1100
Arrivals (Qtl)	3000	15000	-	18000	15000	10000	27000	50000

## Onion Prices & Arrivals in Major Mandis as on 5.4.2014

Mandis	Nashik	Lasalgaon	Pimpalgaon	Niphad	Pune	Indore	Delhi	Bangalore
Price (Rs/Qtl)	-	Closed	Closed	Closed	Closed	500-900	500-1200	600-1100
Arrivals (Qtl)	-	Closed	Closed	Closed	Closed	10000	28800	27000

(Source: AGRIWATCH)

## Onion Prices in major markets – Wholesale vs. Retail as on 7 April 2014

Centre	Min. Price	Max. Price	Modal Price	Retail Price
AHMEDABAD	600	1100	850	1300
AMRITSAR	800	1000	900	1500
BANGALORE	500	800	600	1200
CHENNAI	1300	1500	1400	2000
DEHRADUN	1000	1200	1100	2000
DELHI	1075	1250	1162	1800
GANGATOK	1500	2500	2000	2400
GUWAHATI	900	1000	950	1800
HYDERABAD	400	700	600	900
JAIPUR	950	1050	1005	1700
JAMMU	1250	1350	1300	1800
LASALGAON	351	1099	825	1300
LUCKNOW	1100	1200	1150	1800
MUMBAI	600	1150	875	1200
NASIK	800	1000	910	1200
PATNA	1000	1100	1050	1600
PIMPALGAON	301	1051	750	1250
RANCHI	1080	1200	1125	1500
SHIMLA	1700	1900	1800	2000
SRINAGAR	1400	1600	1500	2000

(Source: State Civil Supplies Dept)

### Disclaimer

The information contained in this document has been compiled by Agriwatch from sources believed to be reliable, such as NHB, Agmarknet, etc. and directly from traders in mandis. However, users of this data are requested to use the information with due caution and crosscheck with other sources. This document is not, and should not be construed as an offer to sell or buy any commodities. This document may not be reproduced, distributed or published without the express consent of SFAC



**SFAC**  
लघु कृषक  
कृषि व्यापार संघ

Small Farmers'  
Agribusiness  
Consortium



**AGRIWATCH**