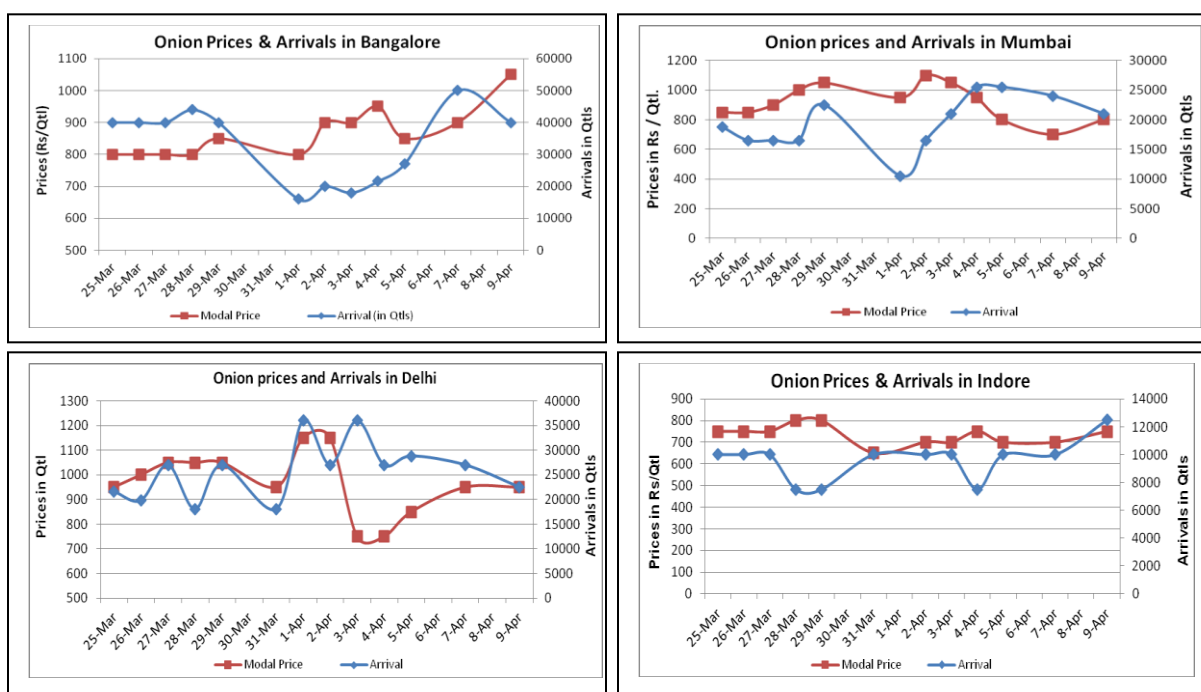


Onion Fundamentals:

- In Maharashtra, Nashik district crop loss is expected to be approximately 40% compared to previous year because of unseasonal rains and hailstorms.
- In Delhi, onion is arriving in market from Rajasthan, M.P Gujarat and Maharashtra which are contributing approximately 15%, 5%, 10% and 70% respectively.
- In Ahmednagar, onion crop is less affected due to rains and hailstorms as compared to other districts like Dhule and Nashik.
- In Maharashtra, onion storage for this rabi season is expected to be comparatively lower than last year. Exact estimation are expected to be made once harvesting is complete

Onion wholesale Prices & Arrivals in Producing & Consumption Centers



(Source: AGRIWATCH)

Onion Prices & Arrivals in Major Mandis as on 9.4.2014

Mandis	Nashik	Lasalgaon	Pimpalgaon	Niphad	Pune	Indore	Delhi	Bangalore
Price (Rs/Qtl)	900-1000	700-800	700-1000	100-1050	400-900	500-1000	700-1200	900-1200
Arrivals (Qtl)	2500	8000	11250	36000	20025	12500	22500	40000

Onion Prices & Arrivals in Major Mandis as on 7.4.2014

Mandis	Nashik	Lasalgaon	Pimpalgaon	Niphad	Pune	Indore	Delhi	Bangalore
Price (Rs/Qtl)	700-900	800-950	-	500-1120	500-900	500-1000	700-1200	700-1100
Arrivals (Qtl)	3000	15000	-	18000	15000	10000	27000	50000

(Source: AGRIWATCH)

Onion Prices in major markets – Wholesale vs. Retail as on 9 April 2014

Centre	Min. Price (Rs/Qtl)	Max. Price (Rs/Qtl)	Modal Price (Rs/Qtl)	Retail Price (Rs/Qtl)
AHMEDABAD	500	1000	750	1200
AMRITSAR	900	1100	1000	1800
BANGALORE	500	850	650	1200
BHOPAL	500	600	550	700
BHUBANESHWAR	1100	1200	1150	1600
CHANDIGARH	1250	1500	1375	2000
CHENNAI	1200	1600	1400	2000
GANGATOK	1500	2500	2000	2500
GUWAHATI	1050	1150	1100	1900
HYDERABAD	400	700	600	900
JAMMU	1200	1300	1250	1600
LASALGAON	200	1168	850	1350
LUCKNOW	1250	1350	1300	2000
MUMBAI	400	1200	800	1000
NASIK	900	1000	960	1200
PATNA	1000	1100	1050	1600
PIMPALGAON	300	1251	800	1450
RAIPUR	800	1000	920	1500
RANCHI	1075	1160	1100	1500
SHIMLA	1600	1800	1700	2000
SRINAGAR	1500	1600	1550	2000

(Source: State Civil Supplies Dept)

Disclaimer

The information contained in this document has been compiled by Agriwatch from sources believed to be reliable, such as NHB, Agmarknet, etc. and directly from traders in mandis. However, users of this data are requested to use the information with due caution and crosscheck with other sources. This document is not, and should not be construed as an offer to sell or buy any commodities. This document may not be reproduced, distributed or published without the express consent of SFAC



SFAC
लघु कृषक
कृषि व्यापार संघ

Small Farmers'
Agribusiness
Consortium



AGRIWATCH