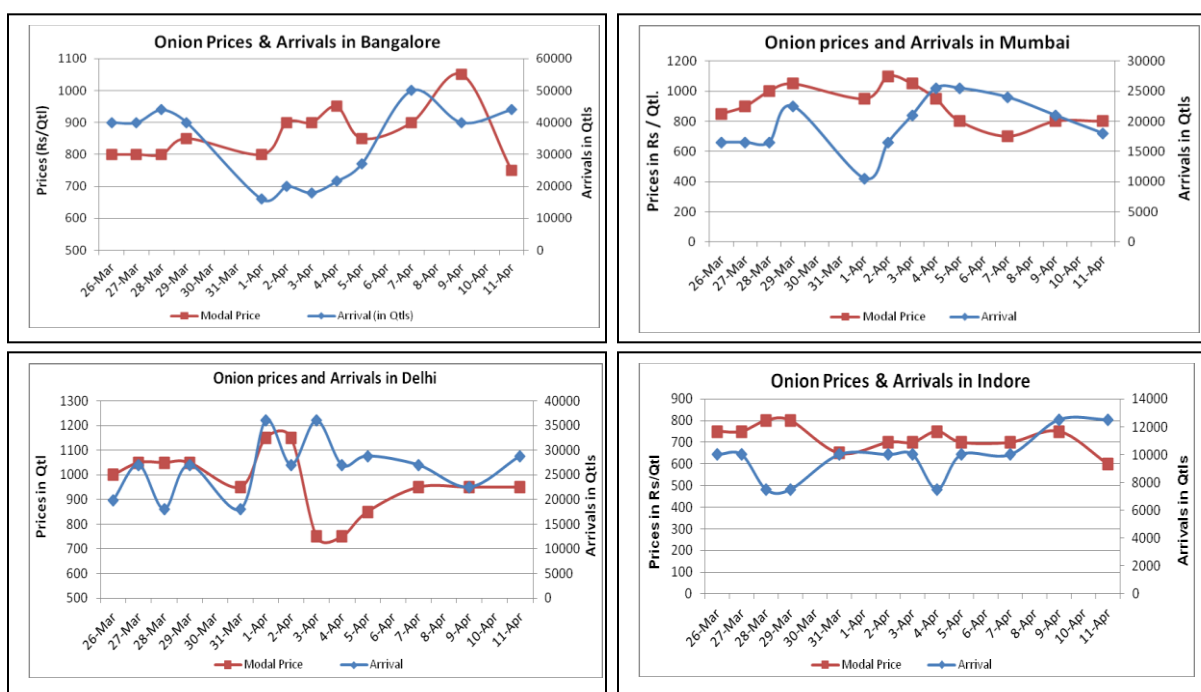


Onion Fundamentals:

- In M.P, onion crop loss is expected to be 25-30% less compared to previous year because of rains/hailstorms.
- In Maharashtra, Nashik district crop loss is expected to be approximately 40% compared to previous year because of unseasonal rains and hailstorms.
- In Delhi, onion is arriving in market from Rajasthan, M.P Gujarat and Maharashtra which are contributing approximately 15%, 5%, 10% and 70% respectively.
- In Maharashtra, onion storage for this rabi season is expected to be comparatively lower than last year. Exact estimation are expected to be made once harvesting is complete

Onion wholesale Prices & Arrivals in Producing & Consumption Centers



(Source: AGRIWATCH)

Onion Prices & Arrivals in Major Mandis as on 11.4.2014

Mandis	Nashik	Lasalgaon	Pimpalgaon	Niphad	Pune	Indore	Delhi	Bangalore
Price (Rs/Qtl)	600-800	700-750	800-1100	Closed	900-1000	300-900	700-1200	400-1100
Arrivals (Qtl)	600	14000	7500	Closed	8000	12500	28800	44000

Onion Prices & Arrivals in Major Mandis as on 9.4.2014

Mandis	Nashik	Lasalgaon	Pimpalgaon	Niphad	Pune	Indore	Delhi	Bangalore
Price (Rs/Qtl)	900-1000	700-800	700-1000	100-1050	400-900	500-1000	700-1200	900-1200
Arrivals (Qtl)	2500	8000	11250	36000	20025	12500	22500	40000

(Source: AGRIWATCH)

Onion Prices in major markets – Wholesale vs. Retail as on 11 April 2014

Centre	Min. Price	Max. Price	Modal Price	Retail Price
AHMEDABAD	500	1000	750	1200
AMRITSAR	1000	1250	1150	1800
BANGALORE	800	1000	900	1400
BHUBANESHWAR	1050	1250	1150	1600
CHANDIGARH	900	1100	1000	1700
CHENNAI	1200	1400	1300	1800
DEHRADUN	1000	1200	1100	2000
GUWAHATI	1200	1300	1250	2000
JAIPUR	850	950	905	1500
JAMMU	1300	1400	1350	1800
KOLKATA	900	1038	969	1700
LASALGAON	151	1192	725	1500
LUCKNOW	1230	1350	1270	2000
MUMBAI	500	1100	800	1200
NASIK	850	1050	950	1250
PATNA	1000	1100	1050	1600
PIMPALGAON	251	1342	751	1550
RANCHI	1125	1250	1200	1600
SHIMLA	1600	1700	1650	2000
SRINAGAR	1600	1800	1700	2200

(Source: State Civil Supplies Dept)

Disclaimer

The information contained in this document has been compiled by Agriwatch from sources believed to be reliable, such as NHB, Agmarknet, etc. and directly from traders in mandis. However, users of this data are requested to use the information with due caution and crosscheck with other sources. This document is not, and should not be construed as an offer to sell or buy any commodities. This document may not be reproduced, distributed or published without the express consent of SFAC