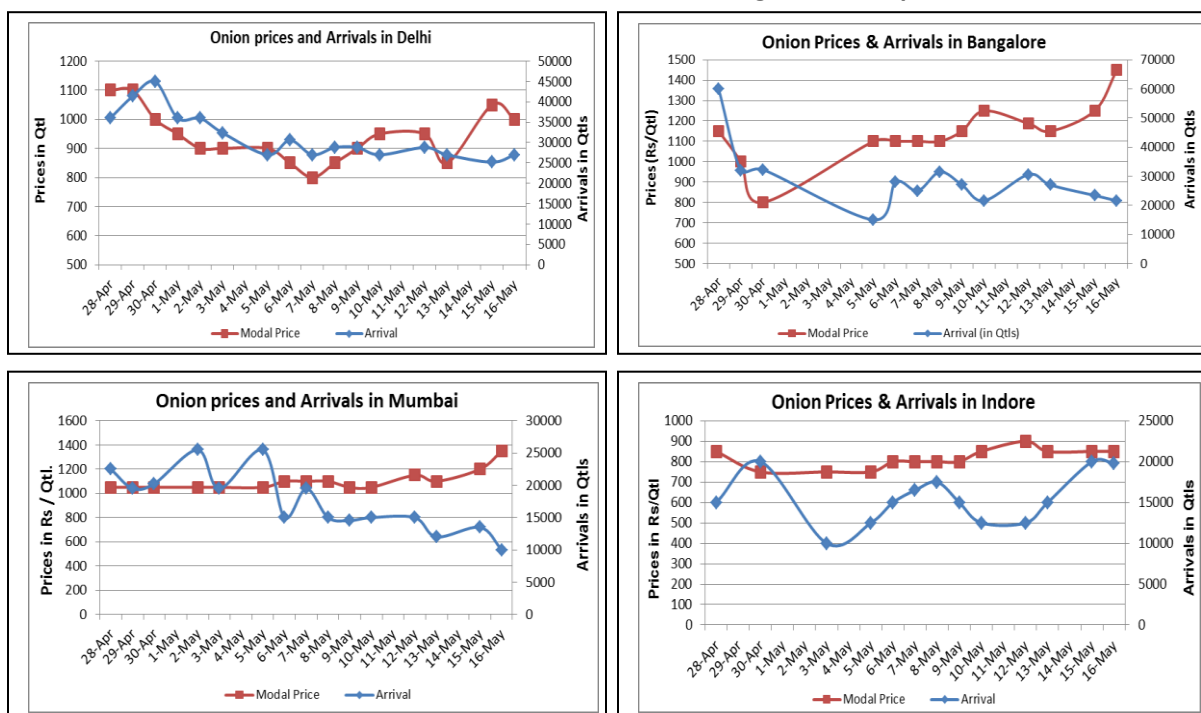


Onion Fundamentals:

- Mostly onion prices were reported up in domestic market on Friday.
- Lower arrivals in the domestic market supported the prices.
- In benchmark market of Lasalgaon, prices are hovering in the range of Rs 700- Rs 1300/ quintal.
- All India, rabi onion storage is expected to be less this year compared to previous year because shelf life of onion have declined this year to higher content of water in onion crop which was due to unseasonal rains and hailstorms.
- As per IBIS (International Business Information System), approximately 45500 tons of processed and fresh onion has been exported in month of May 2014 as on 9th May. It includes the exports which are exported through sea routes only and do not include exports through roads.

Onion wholesale Prices & Arrivals in Producing & Consumption Centers



(Source: AGRIWATCH)

Onion Prices & Arrivals in Major Mandis as on 16.5.2014

Mandis	Nashik	Lasalgaon	Pimpalgaon	Niphad	Pune	Indore	Delhi	Bangalore
Price (Rs/Qtl)	800-1250	700-1300	NR	Closed	800-1500	500-1200	800-1200	1200-1700
Arrivals (Qtl)	1000	19000	NR	Closed	12500	19800	27000	21600

Onion Prices & Arrivals in Major Mandis as on 13.5.2014

Mandis	Nashik	Lasalgaon	Pimpalgaon	Niphad	Pune	Indore	Delhi	Bangalore
Price (Rs/Qtl)	900-1300	100-1300	400-1600	100-1600	700-1300	500-1200	800-1300	1000-1500
Arrivals (Qtl)	2000	13000	9250	30000	12500	20000	25200	23400

(Source: AGRIWATCH)

Onion Prices in major markets – Wholesale vs. Retail as on 16 May 2014

Centre	Min Price	Max Price	Modal Price	Retail Price
AHMEDABAD	500	1200	850	1500
AMRITSAR	1050	1300	1150	2000
BANGALORE	600	900	700	1400
BHUBANESHWAR	1200	1400	1300	1500
CHANDIGARH	1000	1200	1100	4000
CHENNAI	1800	2000	1900	2400
DELHI	1000	1500	1250	2000
GANGATOK	1500	2000	1800	2300
GUWAHATI	1500	1600	1550	2000
JAIPUR	850	950	905	1500
JAMMU	1400	1600	1500	2000
KOLKATA	1275	1550	1313	2200
LASALGAON	300	1520	1000	1720
LUCKNOW	1300	1500	1400	1800
MUMBAI	1000	1500	1250	2000
NASIK	1300	1400	1360	1600
PATNA	1400	1500	1450	2100
PIMPALGAON	400	1525	950	1730
PUNE	1100	1500	1300	2000
RANCHI	1000	1260	1200	1500
SHIMLA	1700	1800	1750	2000
SRINAGAR	1800	2000	1900	2500
TRIVENDRUM	1750	1950	1850	2500

(Source: State Civil Supplies Dept)

Disclaimer

The information contained in this document has been compiled by Agriwatch from sources believed to be reliable, such as NHB, Agmarknet, etc. and directly from traders in mandis. However, users of this data are requested to use the information with due caution and crosscheck with other sources. This document is not, and should not be construed as an offer to sell or buy any commodities. This document may not be reproduced, distributed or published without the express consent of SFAC