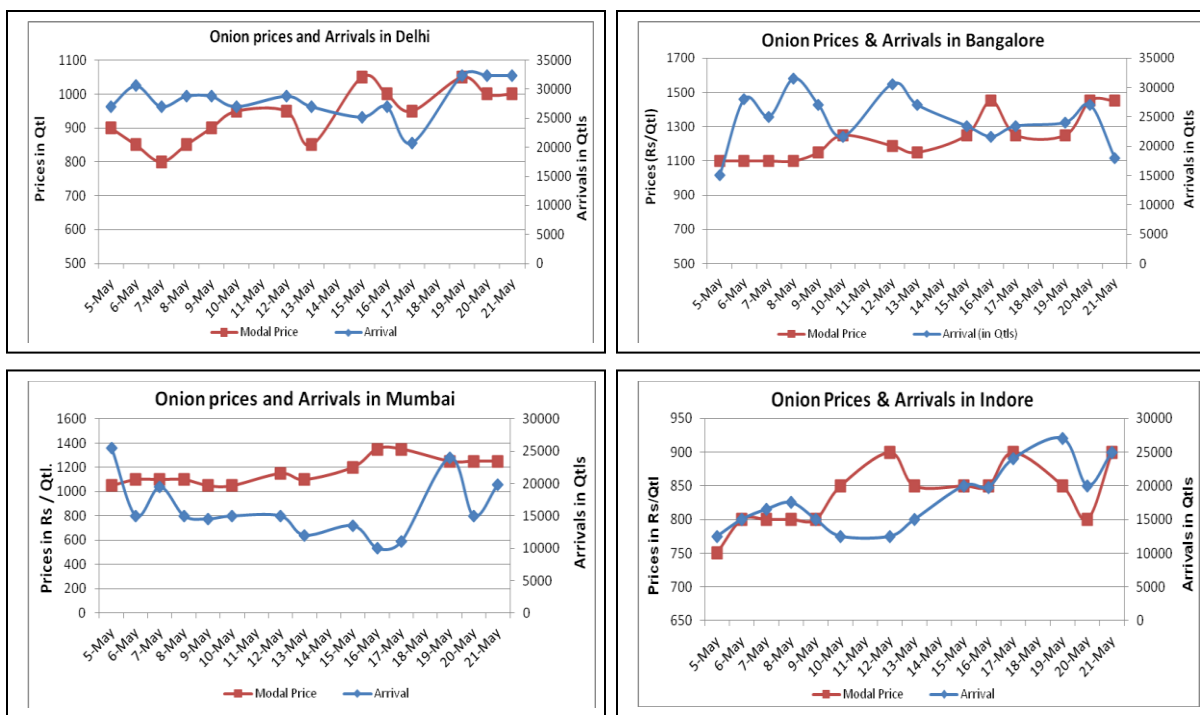


Onion Fundamentals:

- Steady to firm sentiment witnessed in Onion domestic market on Wednesday.
- Buyers were reported active in the domestic market, exporters demand found for good quality material.
- In benchmark market of Lasalgaon, model prices reported Rs.1000/- per qtl.
- Onion prices likely to go up due to shortage of supply. Onion traders expect lower production amid poor quality arrivals might support the bullish sentiment in coming days.
- In Kanpur domestic market higher Onion demand coming from Assam and West Bengal region and Bangladesh.
- All India, rabi onion storage is expected to be less this year compared to previous year because shelf life of onion have declined this year to higher content of water in onion crop which was due to unseasonal rains and hailstorms.

Onion wholesale Prices & Arrivals in Producing & Consumption Centers



(Source: AGRIWATCH)

Onion Prices & Arrivals in Major Mandis as on 21.5.2014

Mandis	Nashik	Lasalgaon	Pimpalgaon	Niphad	Pune	Indore	Delhi	Bangalore
Price (Rs/Qtl)	500-1500	800-1200	1100-1300	400-1200	1100-1200	500-1300	800-1200	1200-1700
Arrivals (Qtl)	1600	17000	17500	40800	8000	25000	32400	18000

Onion Prices & Arrivals in Major Mandis as on 20.5.2014

Mandis	Nashik	Lasalgaon	Pimpalgaon	Niphad	Pune	Indore	Delhi	Bangalore
Price (Rs/Qtl)	700-1200	900-1300	400-1720	400-1400	1000-1200	300-1300	800-1200	1200-1700
Arrivals (Qtl)	2000	15000	17500	30000	10000	20000	32400	27000

(Source: AGRIWATCH)

Onion Prices in major markets – Wholesale vs. Retail as on 21 May 2014

Centre	Min.Price	Max.Price	Model.Price	Retail.Price
AMRITSAR	950	1200	1100	2000
BHUBANESHWAR	1300	1400	1350	1800
CHANDIGARH	875	1125	1000	2000
CHENNAI	1600	1800	1700	2600
DELHI	1050	1450	1250	2000
GANGATOK	1600	2000	1800	2200
GUWAHATI	1750	1850	1800	2400
HYDERABAD	600	800	700	1000
JAIPUR	900	1000	960	1600
JAMMU	1400	1600	1500	2000
LASALGAON	250	1482	975	1650
LUCKNOW	1250	1400	1325	2000
MUMBAI	900	1500	1200	2000
NAGPUR	650	1125	888	2000
NASIK	1000	1800	1560	2000
PATNA	1400	1500	1450	2000
PIMPALGAON	500	1865	1151	2000
PUNE	1200	1400	1300	1700
RAIPUR	900	1100	1050	1500
RANCHI	1010	1180	1100	1500
SHIMLA	1700	1800	1750	2000
SRINAGAR	1600	1800	1700	2200

(Source: State Civil Supplies Dept)

Disclaimer

The information contained in this document has been compiled by Agriwatch from sources believed to be reliable, such as NHB, Agmarknet, etc. and directly from traders in mandis. However, users of this data are requested to use the information with due caution and crosscheck with other sources. This document is not, and should not be construed as an offer to sell or buy any commodities. This document may not be reproduced, distributed or published without the express consent of SFAC



SFAC
लघु कृषक
कृषि व्यापार संघ

Small Farmers'
Agribusiness
Consortium



AGRIWATCH